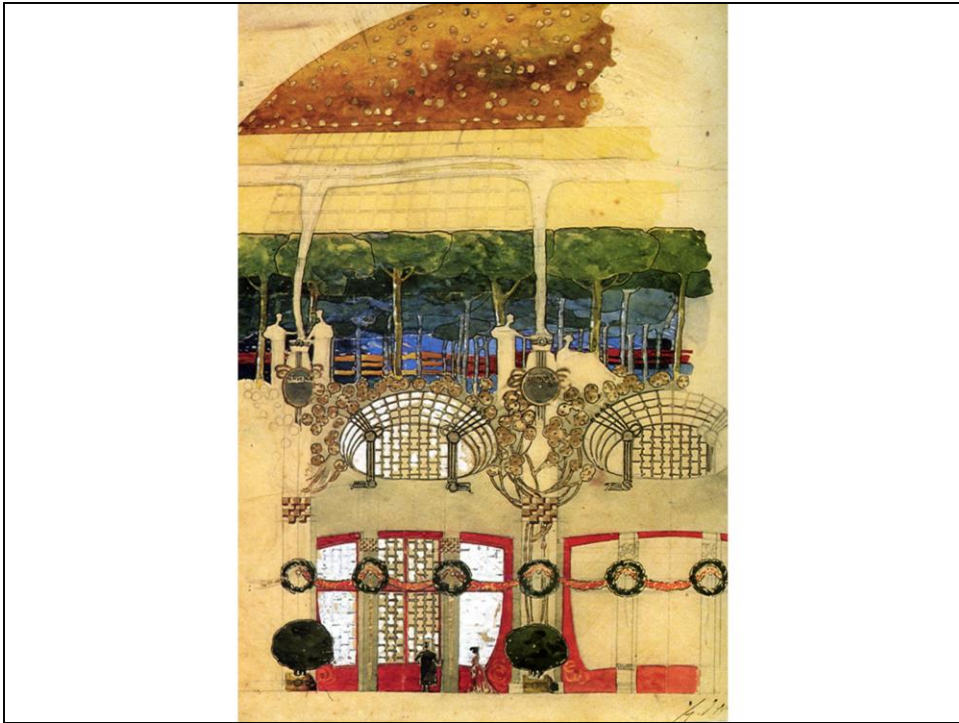




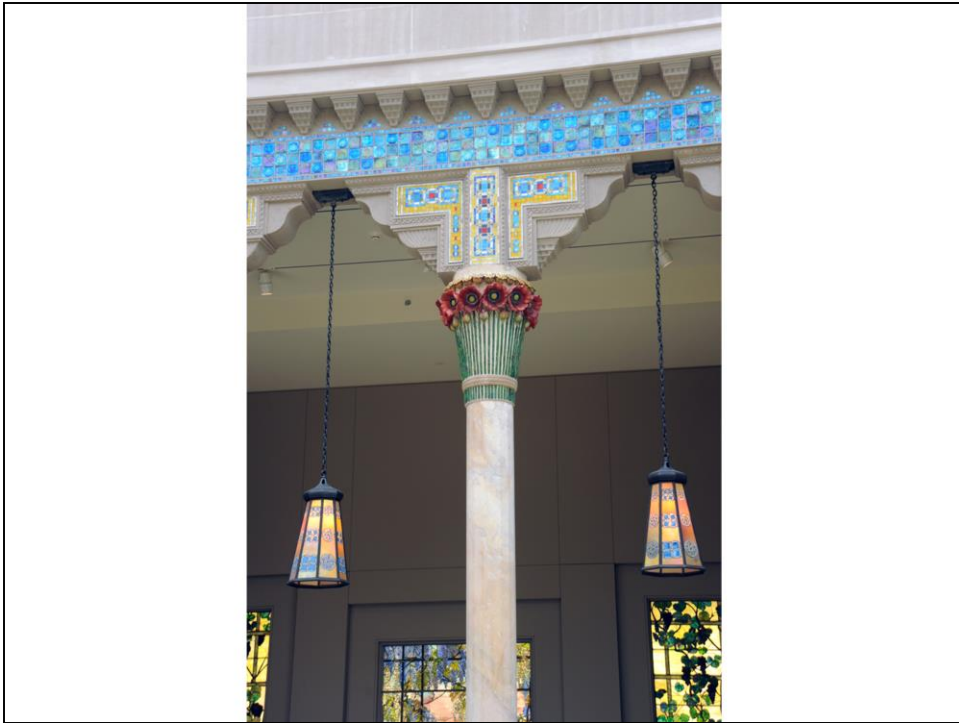
H. van de Velde, *Candeliere*, 1902



R. D'Arco, bozzetto per la decorazione interna della Rotonda, I Esposizione Internazionale d'Arte Decorativa Moderna, Torino 1902



Louis C. Tiffany, Vaso in vetro, 1912



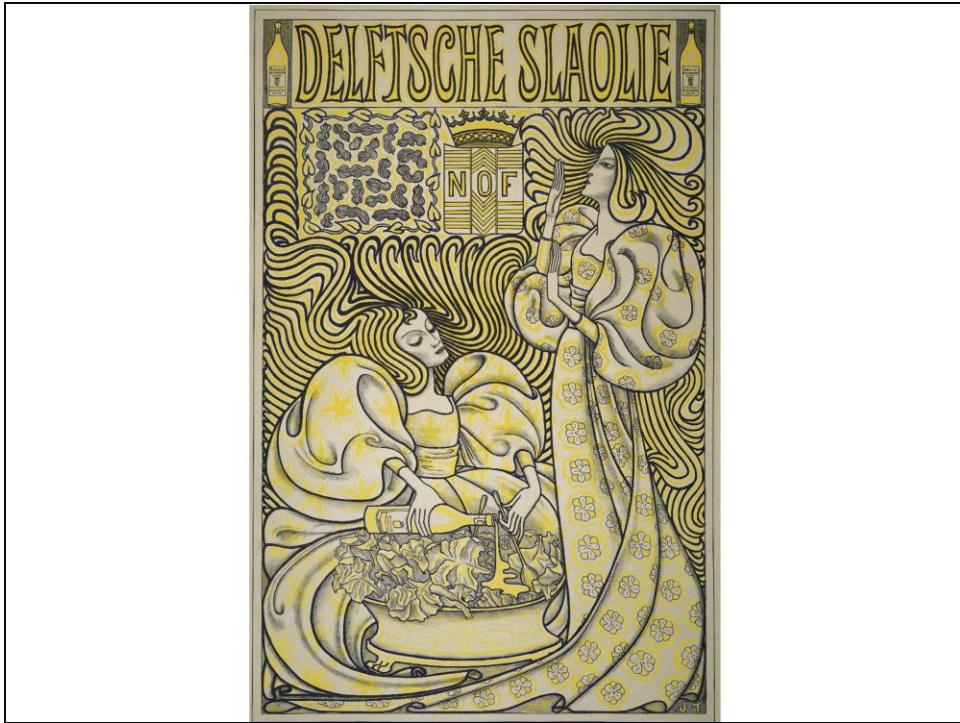
Louis C. Tiffany, Elementi decorativi per la loggia d'ingresso di Laurelton Hall, Oyster Bay, Long Island (N.Y.), 1905 ca.



V. Horta, vetrata del salone dell'hotel Solvay, Bruxelles, 1894-98



Katsushika Hokusai, *Onda al largo di Kanagawa*, dalla serie *Le trentasei vedute del monte Fuji* (1826-1833)



J. Toorop, Litografia per il manifesto di Delftsche Slaolie (1897 ca.)



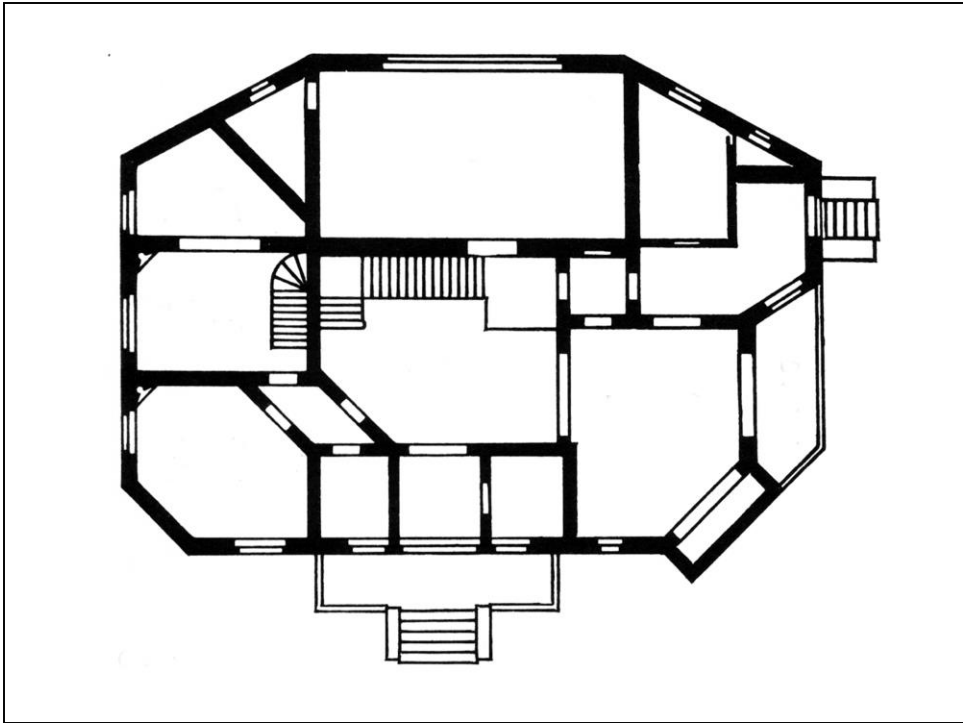


H. van de Velde, *La veglia degli angeli* (1892)





H. Van de Velde, Le Bloemenwerf, Uccle, Bruxelles, 1895



H. Van de Velde, Le Bloemenwerf, Uccle, Bruxelles, 1895



H. Van de Velde, Abiti per la moglie, 1895 ca.



H. Van de Velde, scrittoio, 1899



H. Van de Velde, Salone del barbiere imperiale François Haby, Berlino (1901)



H. Van de Velde, Salone del barbiere imperiale François Haby, ricostruzione al Märkisches Museum, Berlino

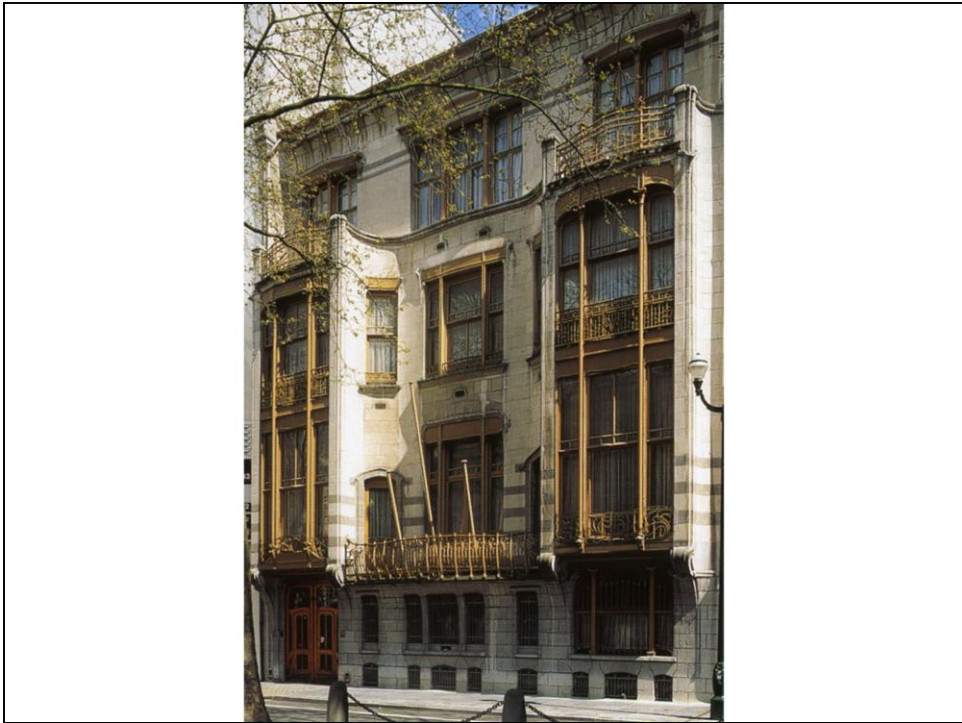


H. Van de Velde, Scuola Granducale di Belle Arti di Weimar, 1904-1911





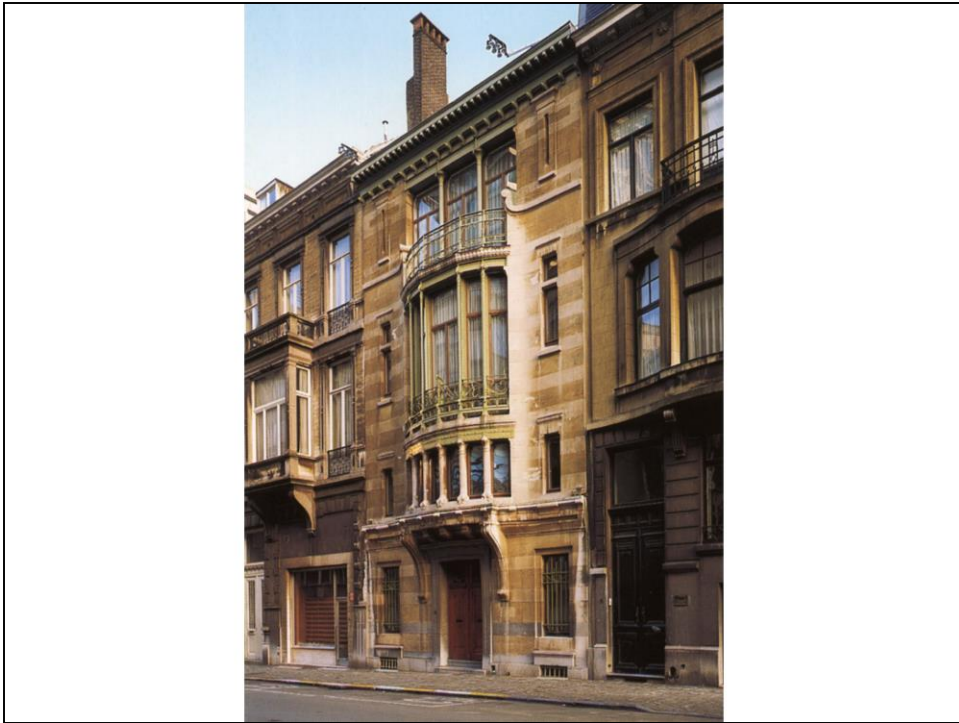
Ritratto fotografico di Victor Horta



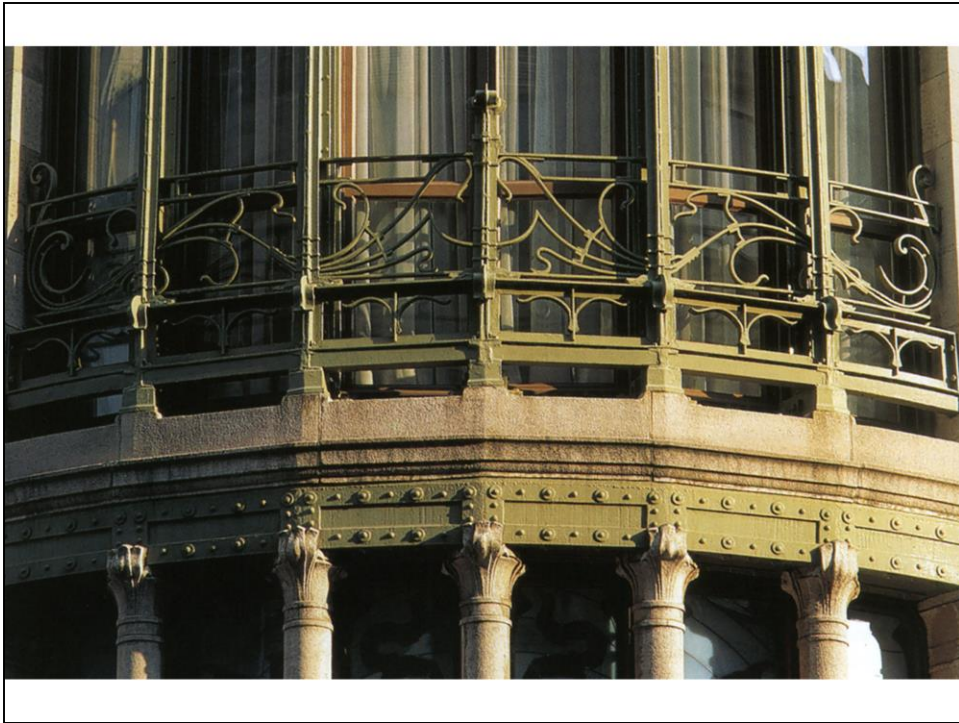
V. Horta, Hôtel Solvay, Bruxelles (1894-98)



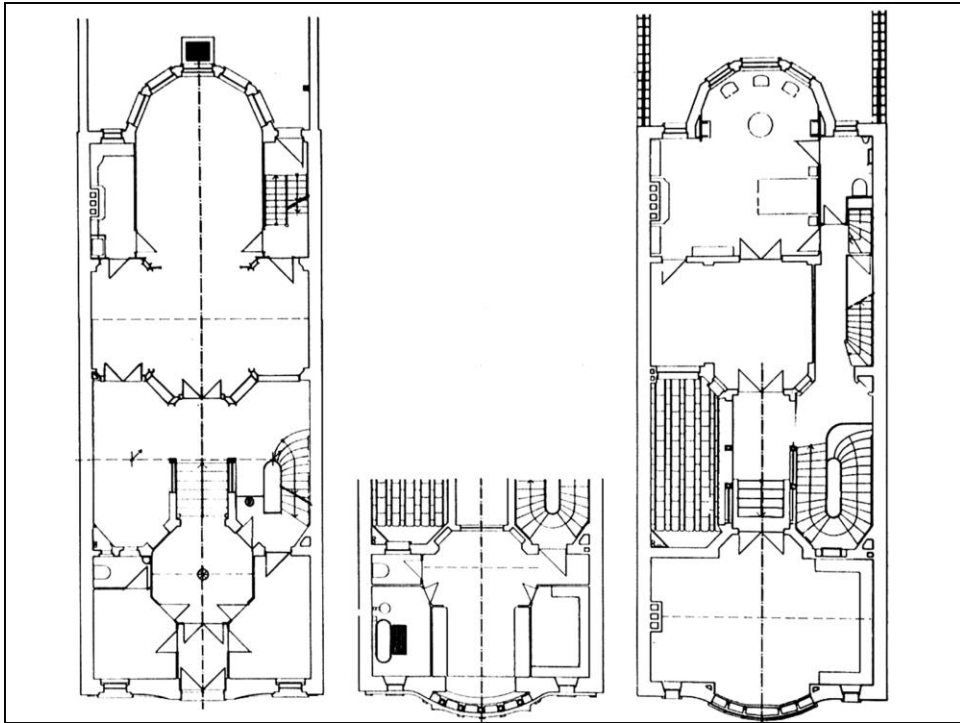
V. Horta, Hôtel Van Eetvelde, Bruxelles (1895-1901): la hall ottagonale



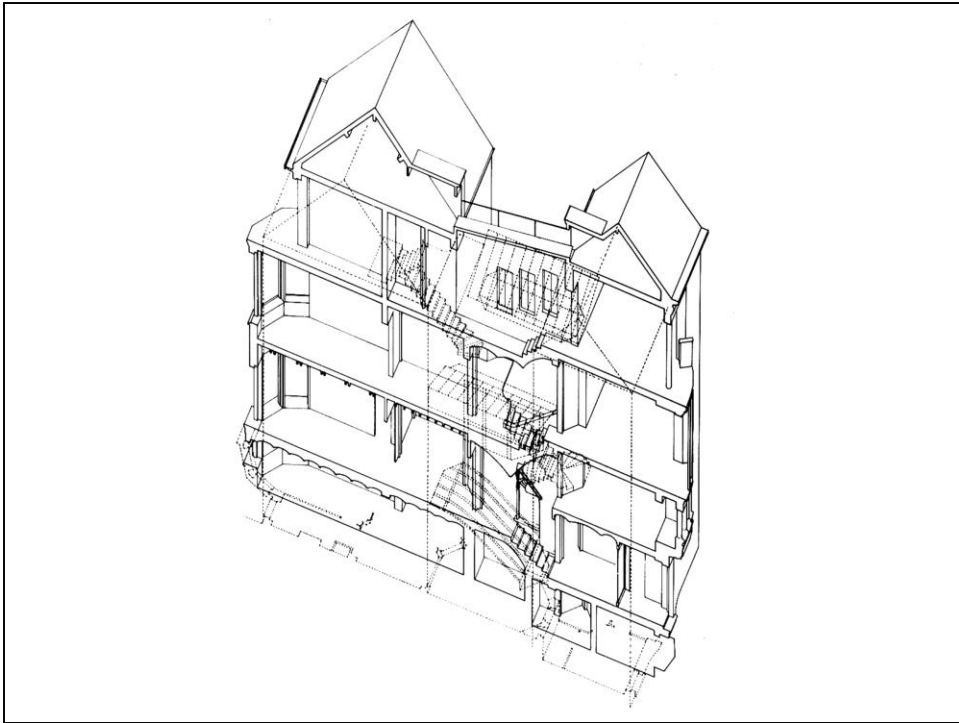
V. Horta, Hôtel Tassel, Bruxelles (1893-95)



V. Horta, Hôtel Tassel, Bruxelles (1893-95): dettaglio della facciata



V. Horta, Hôtel Tassel, Bruxelles (1893-95): piante (da sinistra a destra piano terreno, mezzanino, primo piano)

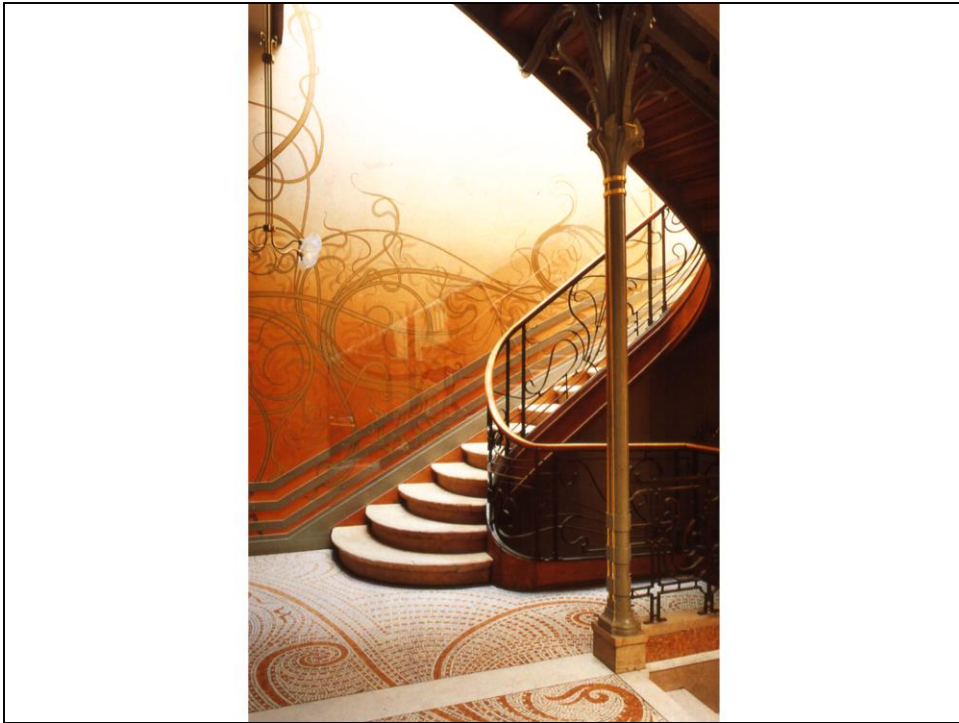


V. Horta, Hôtel Tassel, Bruxelles (1893-95): spaccato assonometrico

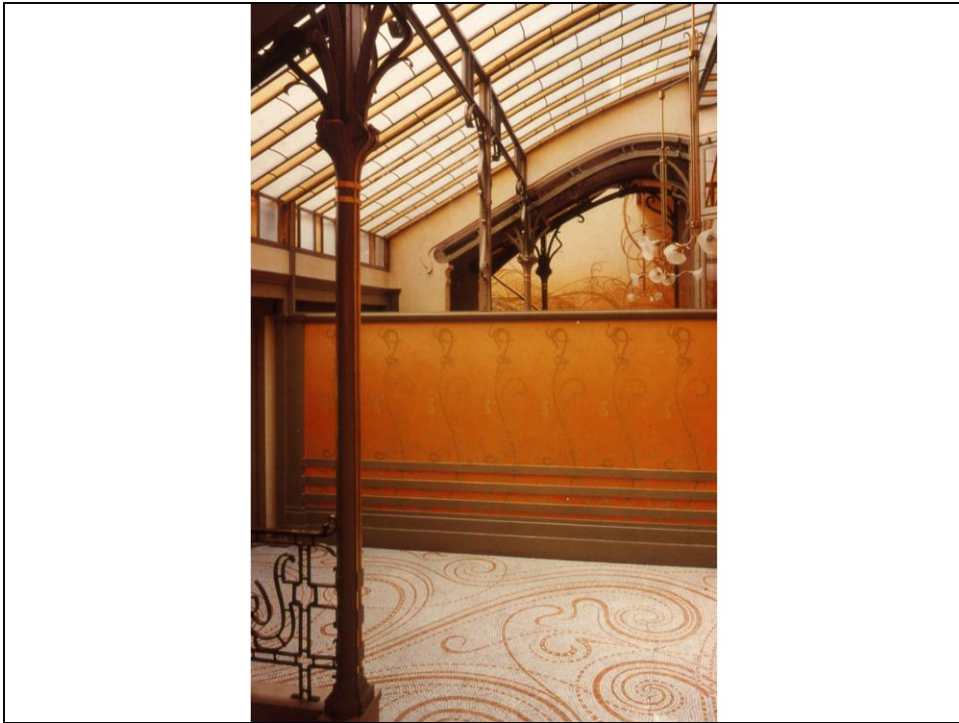




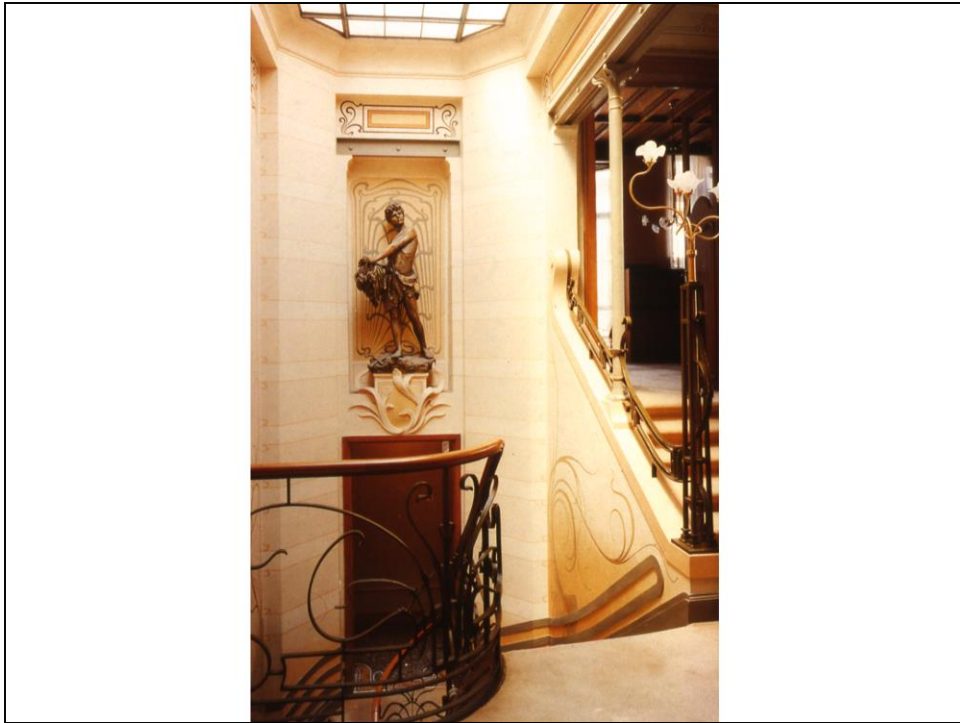
V. Horta, Hôtel Tassel, Bruxelles (1893-95): il vestibolo d'ingresso visto dalla sala (a sinistra) e dal mezzanino (a destra)



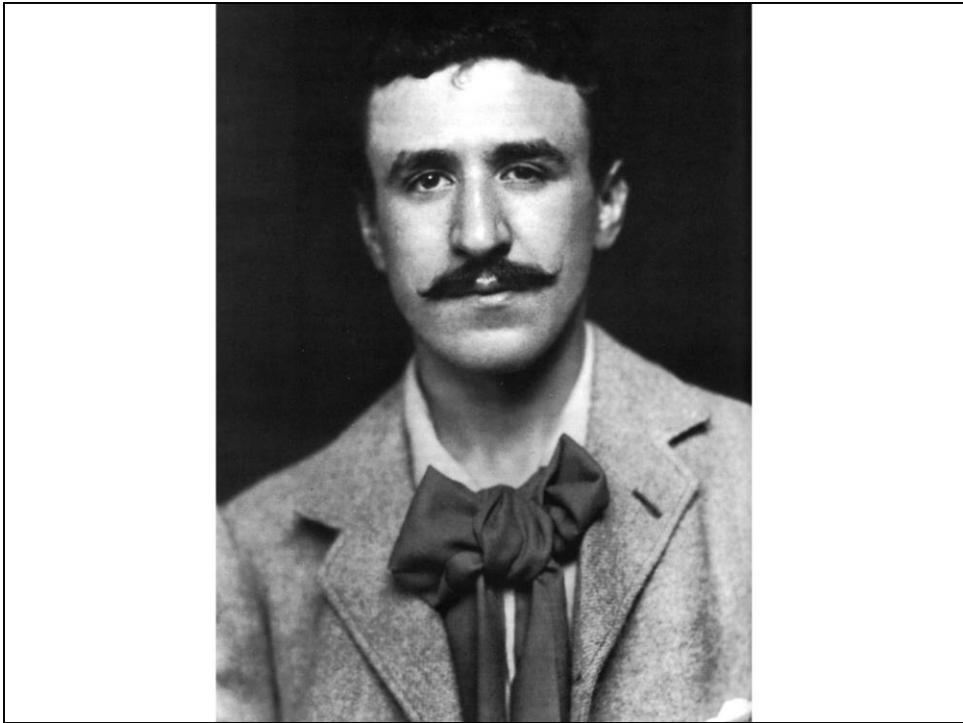
V. Horta, Hôtel Tassel, Bruxelles (1893-95): la scala



V. Horta, Hôtel Tassel, Bruxelles (1893-95): il giardino d'inverno



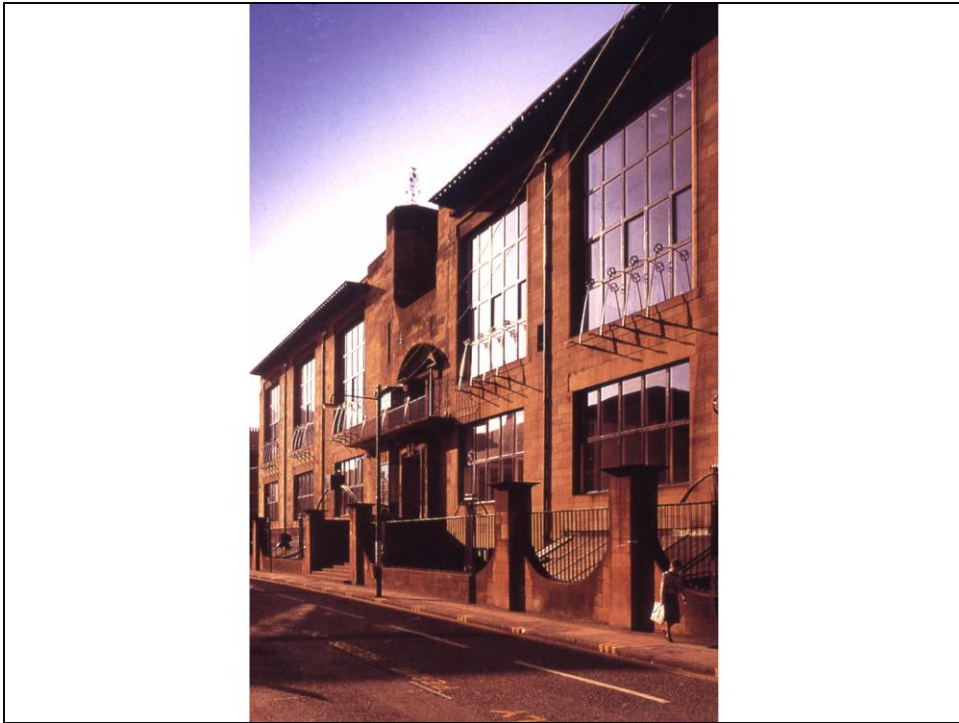
V. Horta, Hôtel Tassel, Bruxelles (1893-95): lo sbarco della scala al primo piano



Ritratto di Charles Rennie Mackintosh

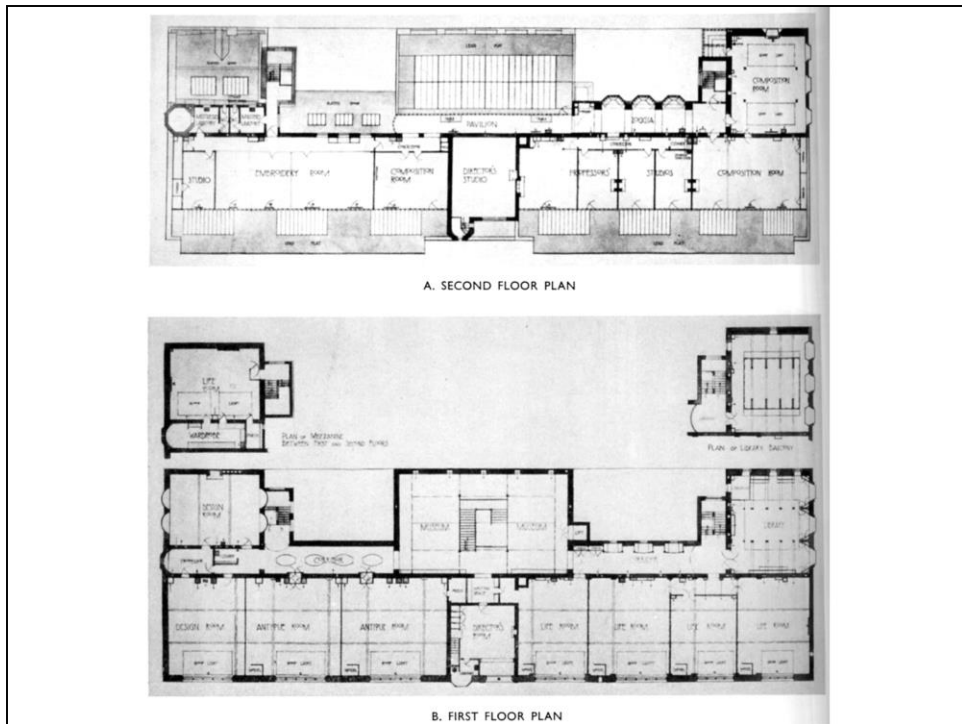


C.R. Mackintosh, *Fritillaria* (a sinistra), *Rosmarino* (al centro), *Veronica* (a destra), acquarelli (1915)

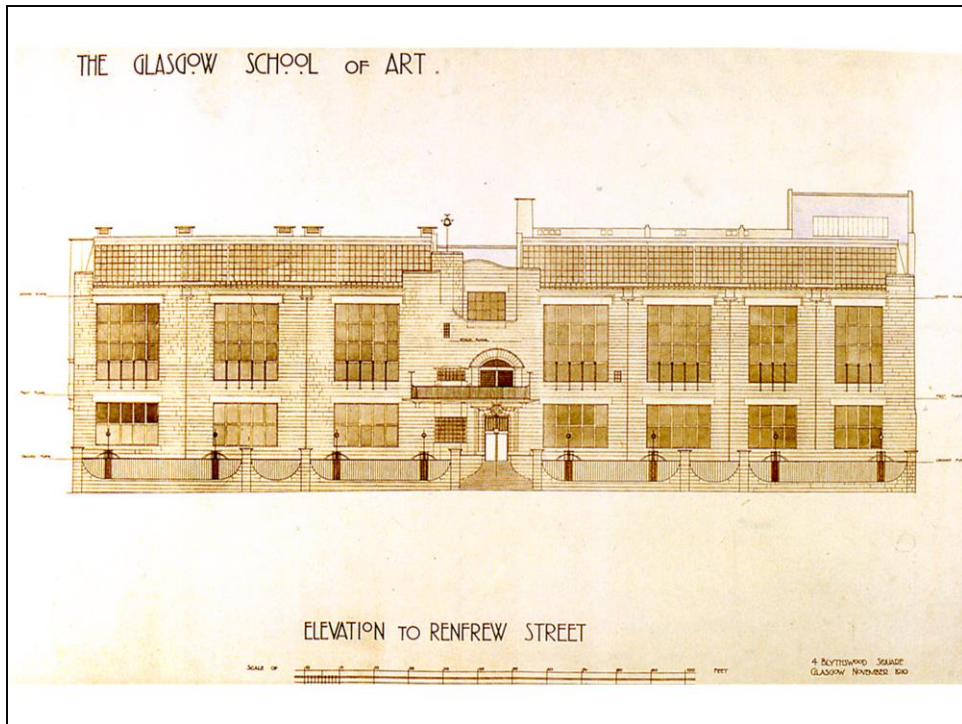


C.R. Mackintosh, Glasgow School of Art, Glasgow (1896-1909): la facciata Nord

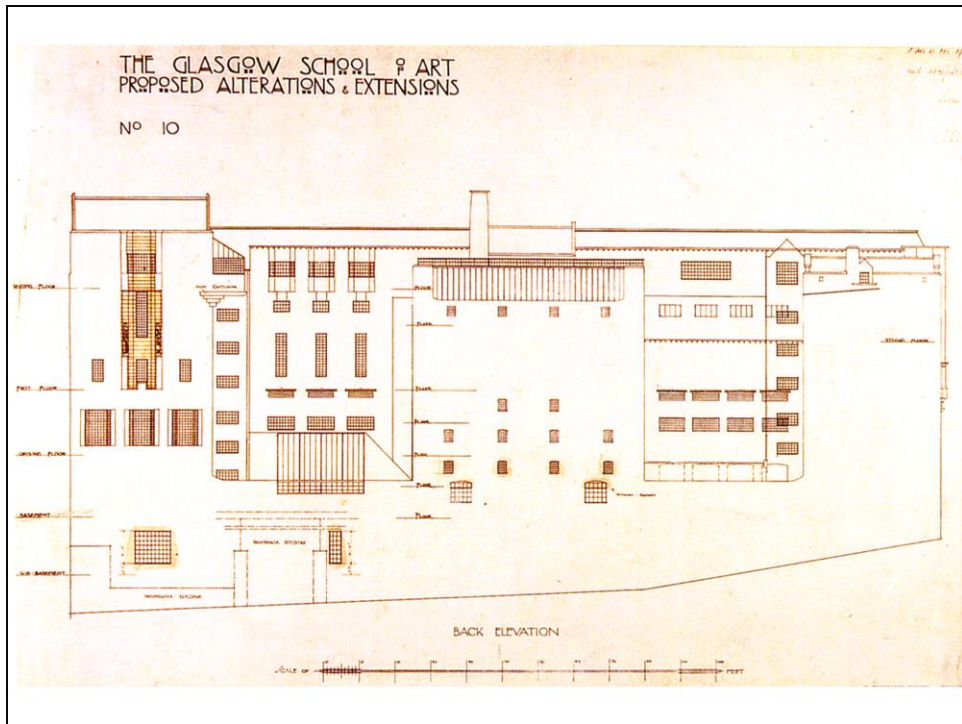




C.R. Mackintosh, Glasgow School of Art, Glasgow (1896-1909): piante del primo e secondo piano



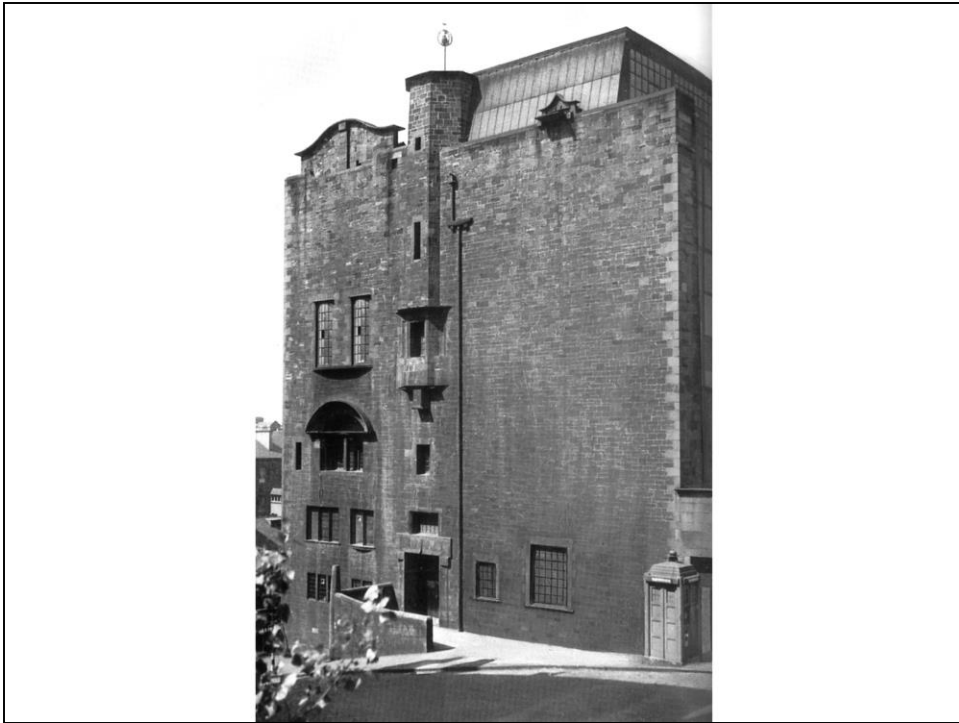
C.R. Mackintosh, Glasgow School of Art, Glasgow (1896-1909): prospetto nord



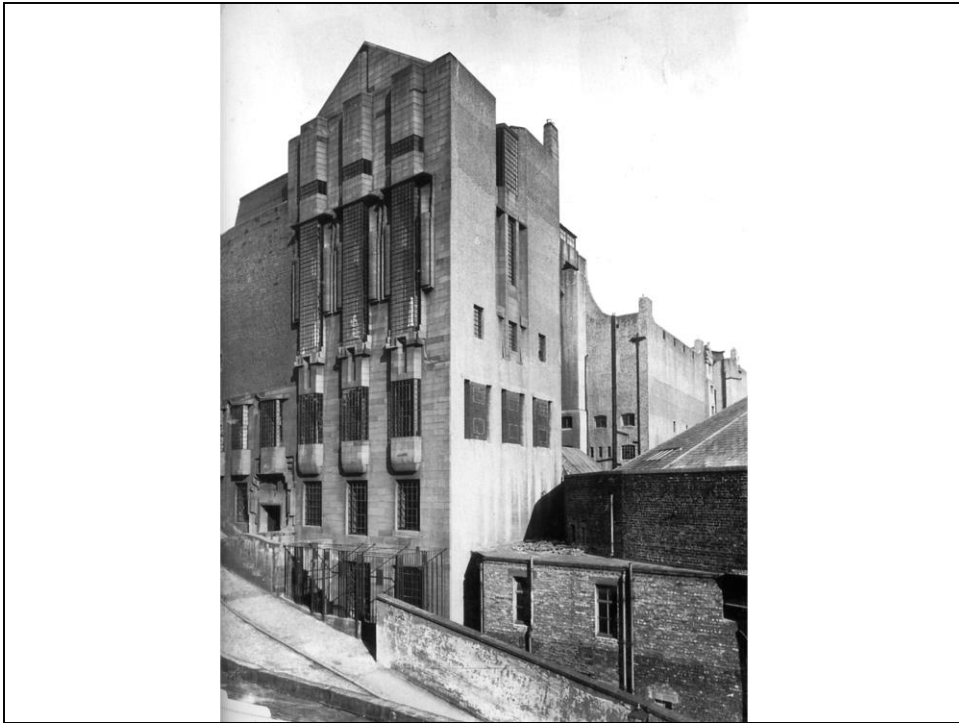
C.R. Mackintosh, Glasgow School of Art, Glasgow (1896-1909): prospetto sud



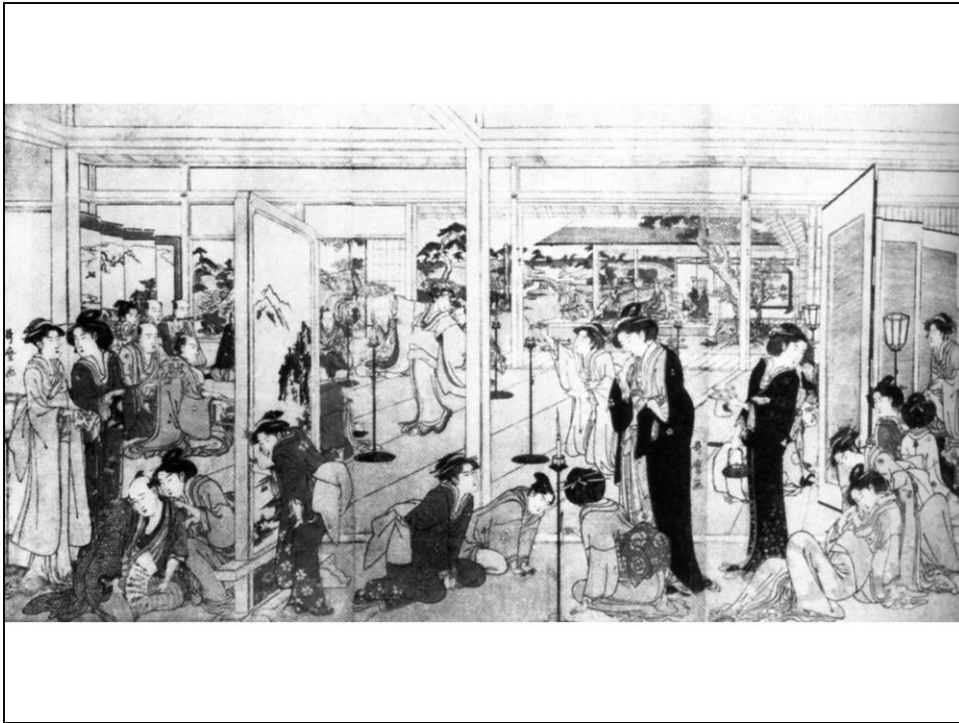
C.R. Mackintosh, Glasgow School of Art, Glasgow (1896-1909): l'ingresso



C.R. Mackintosh, Glasgow School of Art, Glasgow (1896-1909): la facciata est

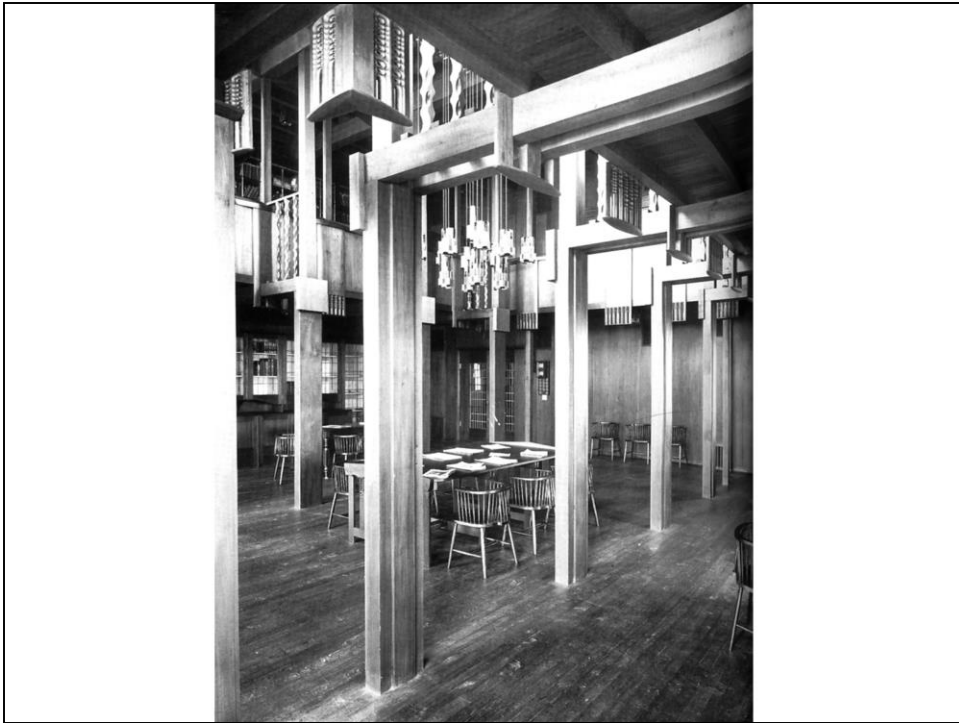


C.R. Mackintosh, Glasgow School of Art, Glasgow (1896-1909): la facciata ovest con la torre della biblioteca



Kitagawa Utamaro, Le geishe, incisione (seconda metà del XVIII sec.)





C.R. Mackintosh, Glasgow School of Art, Glasgow (1896-1909): la biblioteca



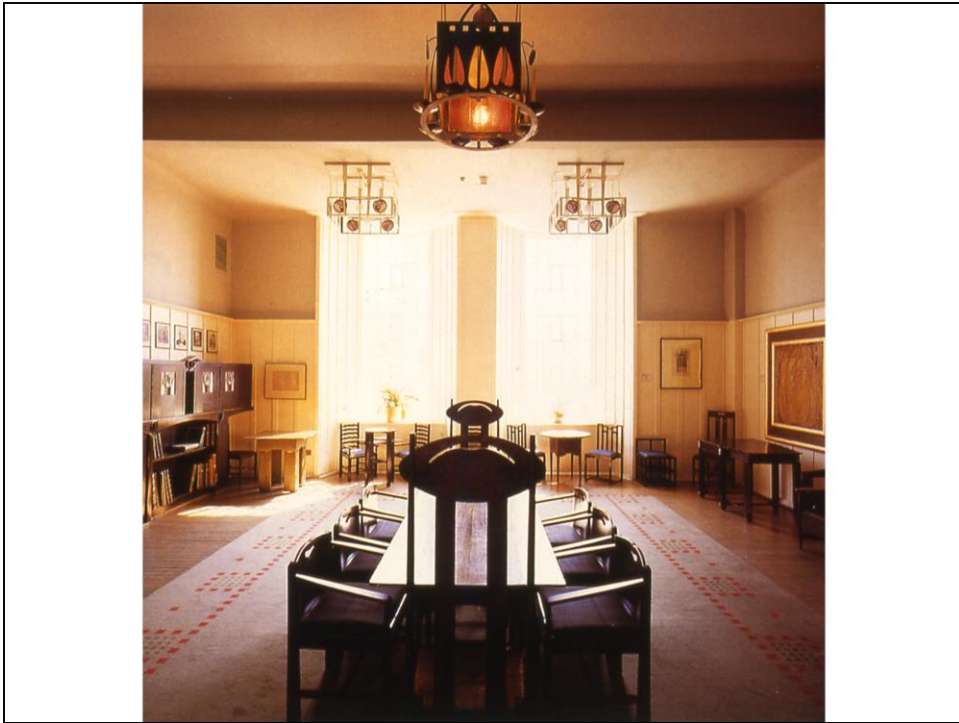
C.R. Mackintosh, Glasgow School of Art, Glasgow (1896-1909): la biblioteca



C.R. Mackintosh, Glasgow School of Art, Glasgow (1896-1909): un bay-window della biblioteca visto dall'interno



C.R. Mackintosh, Glasgow School of Art, Glasgow (1896-1909): il museo



C.R. Mackintosh, Glasgow School of Art, Glasgow (1896-1909): il Board-Room



C.R. Mackintosh, Glasgow School of Art, Glasgow (1896-1909): l'ufficio del direttore