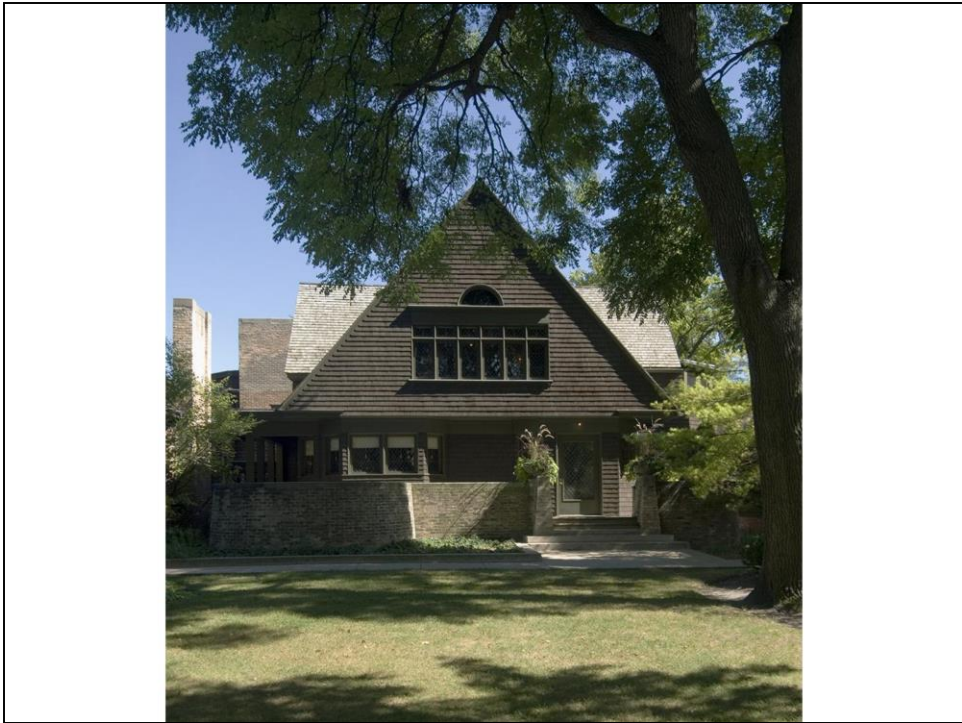
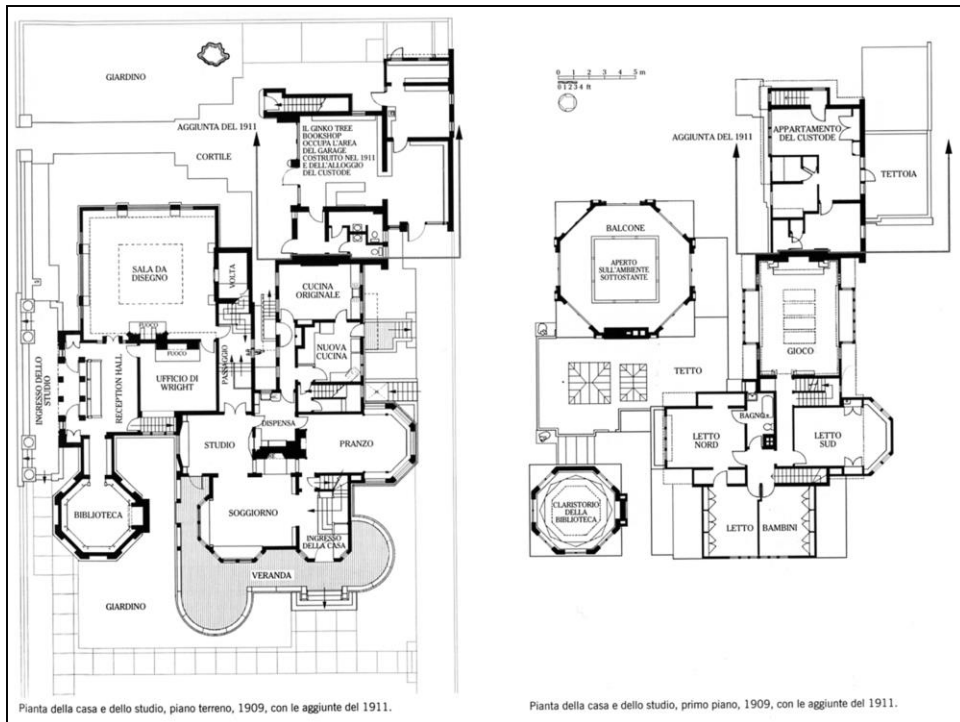


Ritratto di Frank Lloyd Wright



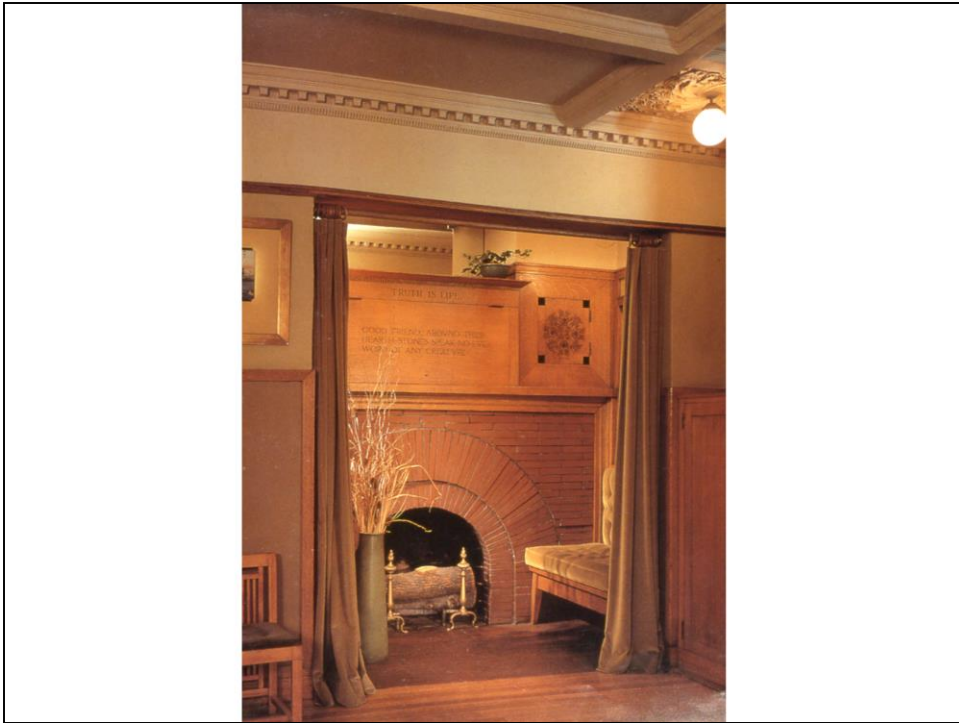
F.L. Wright, Frank Lloyd Wright House, Oak Park, Ill. (1889)



Pianta della casa e dello studio, piano terreno, 1909, con le aggiunte del 1911.

Pianta della casa e dello studio, primo piano, 1909, con le aggiunte del 1911.

F.L. Wright, Frank Lloyd Wright House, Oak Park, Ill. (1889): piante con le aggiunte del 1909-11



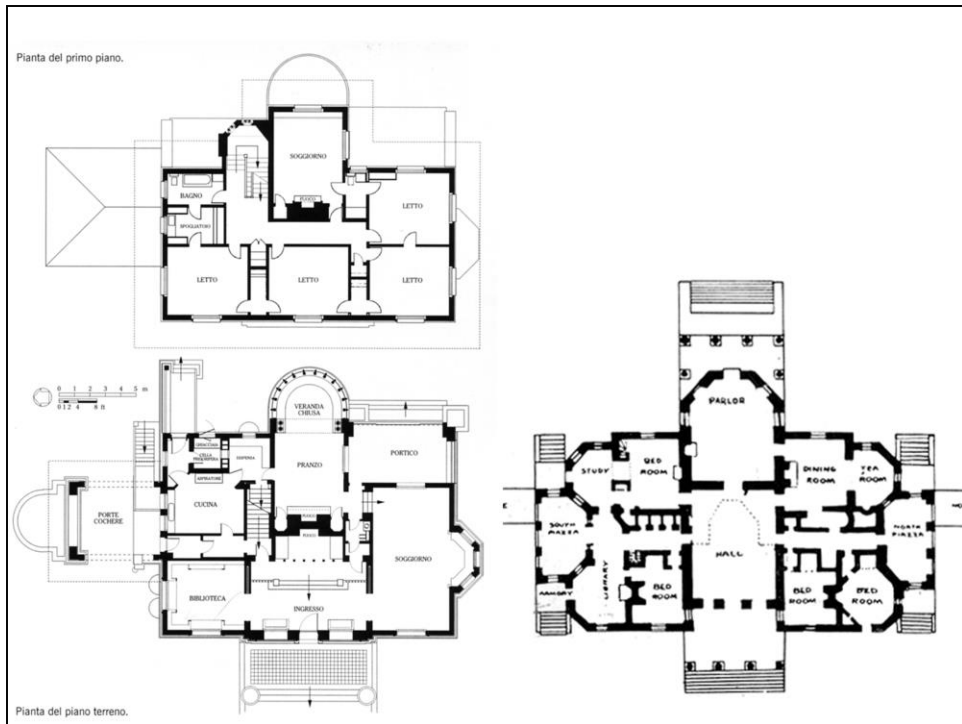
F.L. Wright, Frank Lloyd Wright House, Oak Park, Ill. (1889): l'alcova del camino



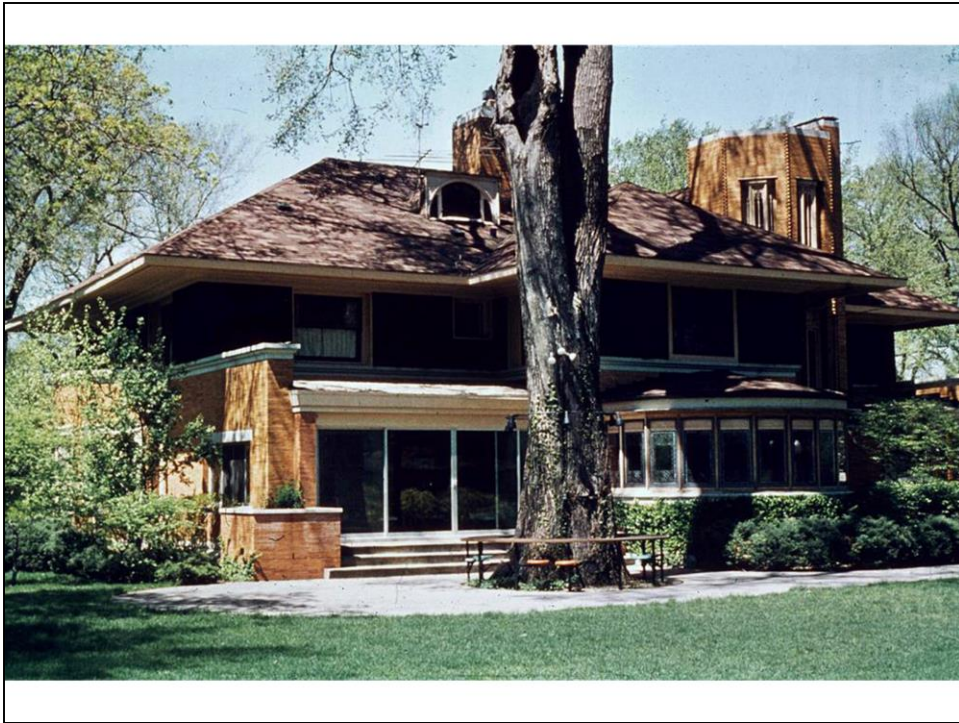
F.L. Wright, Frank Lloyd Wright House, Oak Park, Ill. (1889): la sala da pranzo



F.L. Wright, William Winslow House, River Forest, Ill. (1893)



F.L. Wright, William Winslow House, River Forest, Ill. (1893): piante (a destra la pianta di Monticello di T. Jefferson)



F.L. Wright, William Winslow House, River Forest, Ill. (1893): la facciata sul retro

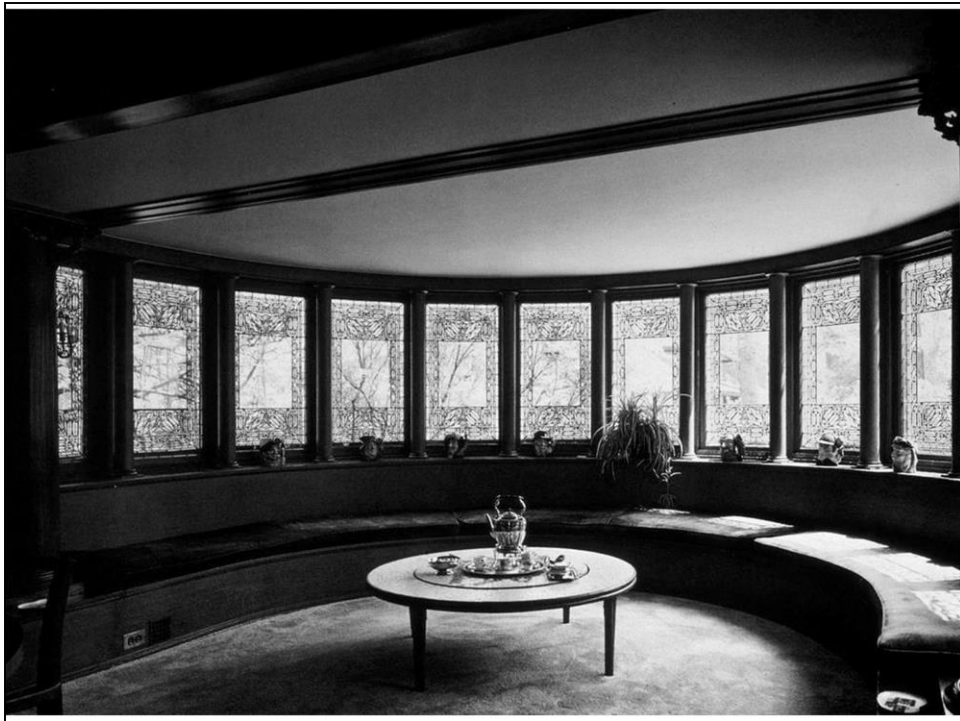




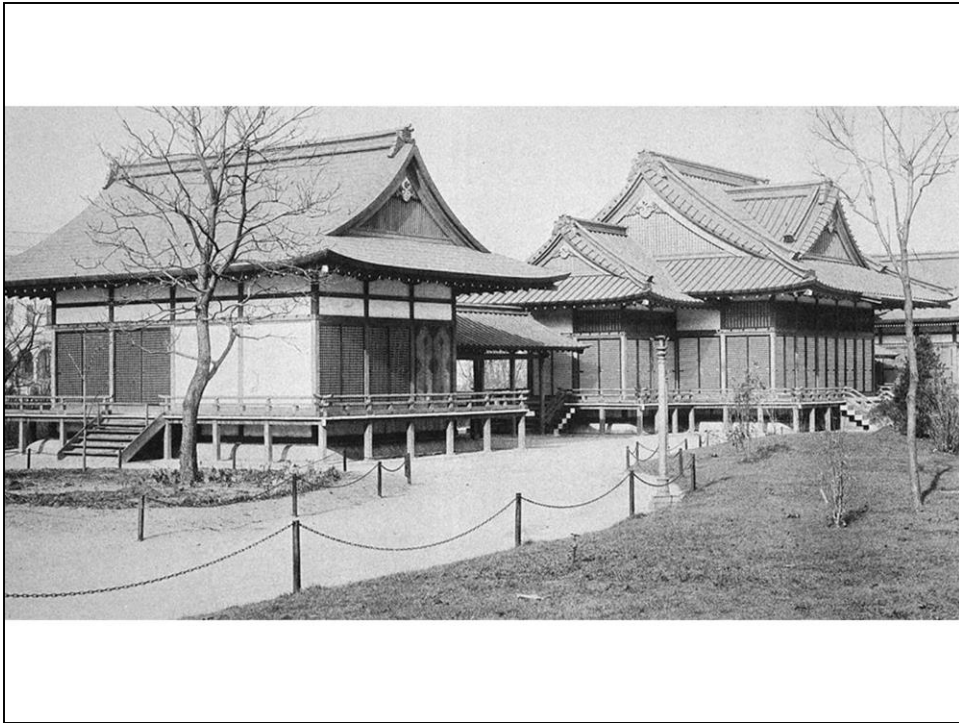
F.L. Wright, William Winslow House, River Forest, Ill. (1893): il camino della zona d'ingresso



F.L. Wright, William Winslow House, River Forest, Ill. (1893): l'angolo conversazione nel soggiorno



F.L. Wright, William Winslow House, River Forest, Ill. (1893): la veranda annessa alla sala da pranzo



Il padiglione Ho-ho-den alla World's Columbian Exposition di Chicago del 1893



Villa imperiale di Katsura, Kyoto, 1625



Palazzo imperiale di Katsura, Tokio



Tokonoma nella casa tradizionale giapponese

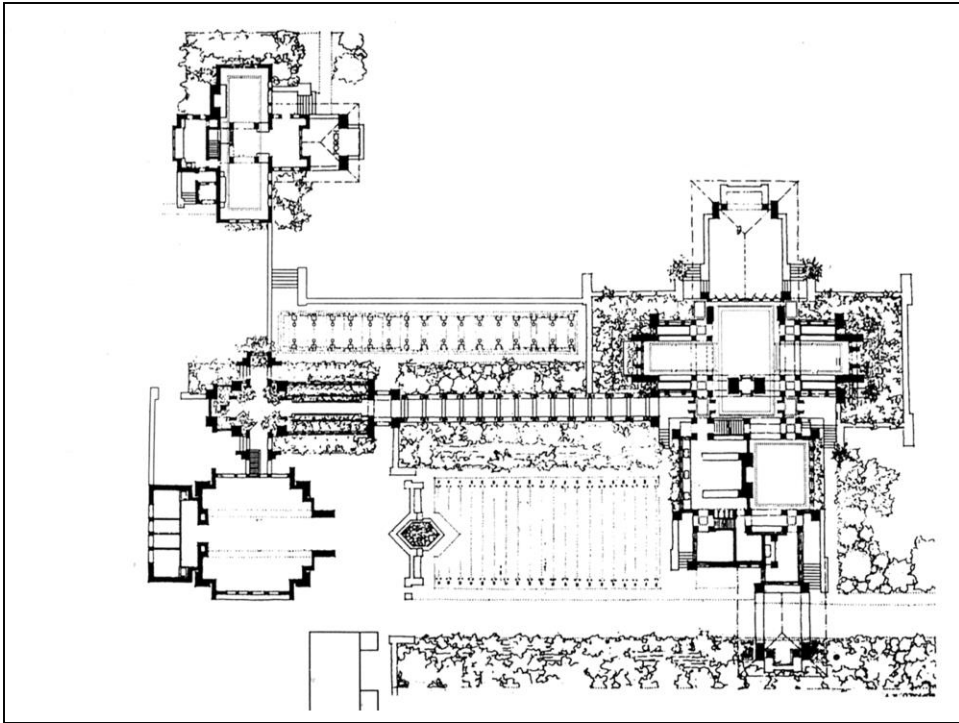


F.L. Wright, Darwin Martin House, Buffalo, N.Y. (1903-04): la facciata verso la strada

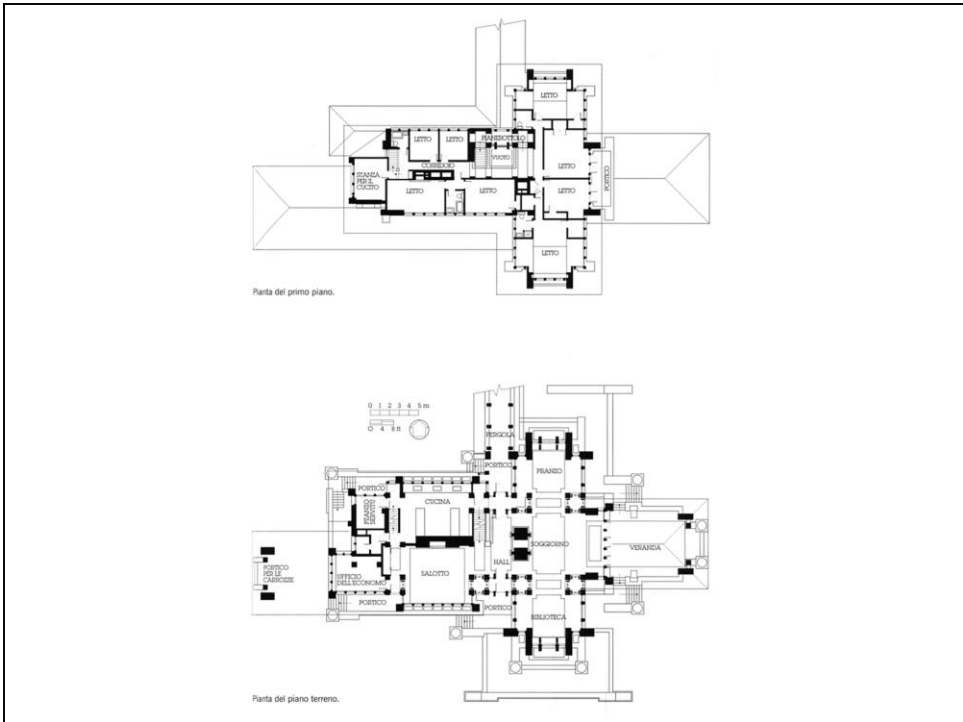




F.L. Wright, Darwin Martin House, Buffalo, N.Y. (1903-04)



F.L. Wright, Darwin Martin House, Buffalo, N.Y. (1903-04): planimetria



F.L. Wright, Darwin Martin House, Buffalo, N.Y. (1903-04): piante



F.L. Wright, Darwin Martin House, Buffalo, N.Y. (1903-04): la hall d'ingresso



F.L. Wright, Darwin Martin House, Buffalo, N.Y. (1903-04): il soggiorno



F.L. Wright, Darwin Martin House, Buffalo, N.Y. (1903-04)



F.L. Wright, Darwin Martin House, Buffalo, N.Y. (1903-04)

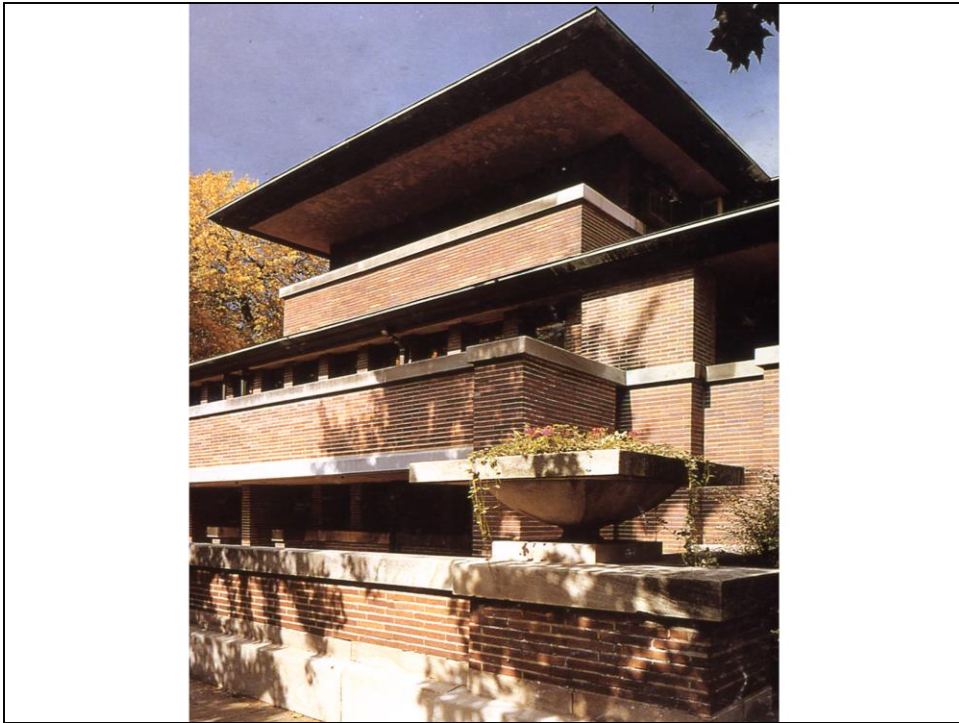


F.L. Wright, Frederick C. Robie House, Chicago (1908-10)

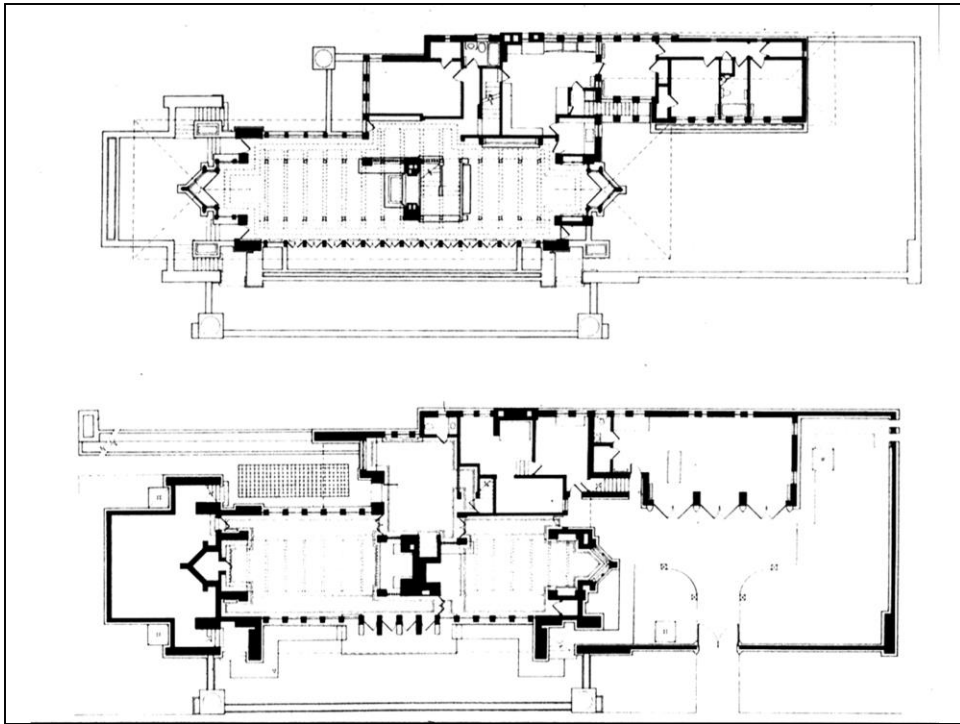




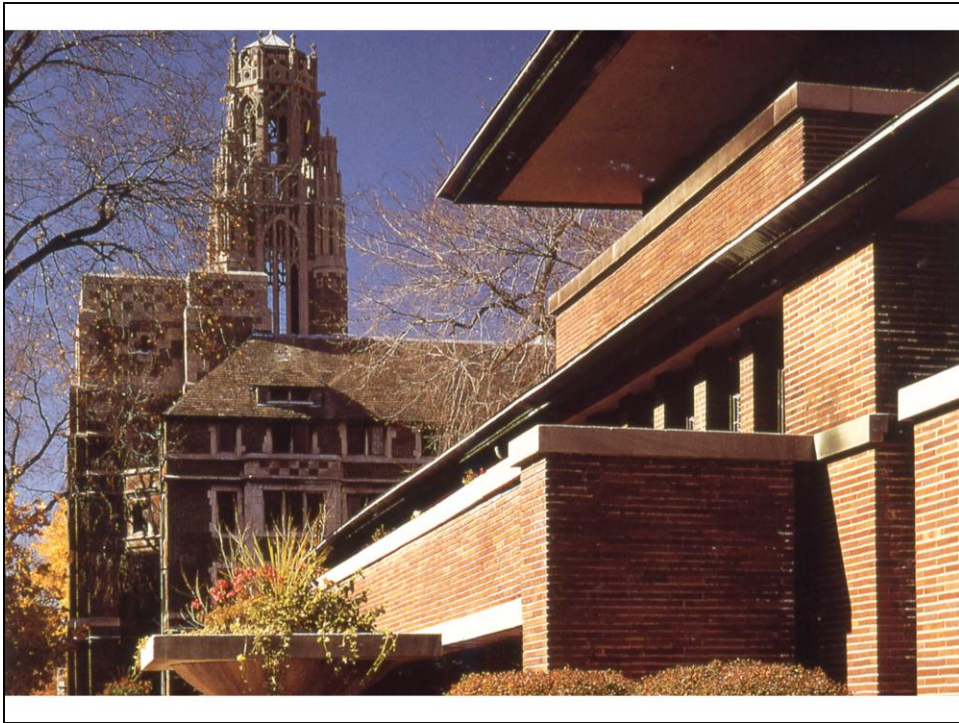
F.L. Wright, Frederick C. Robie House, Chicago (1908-10)



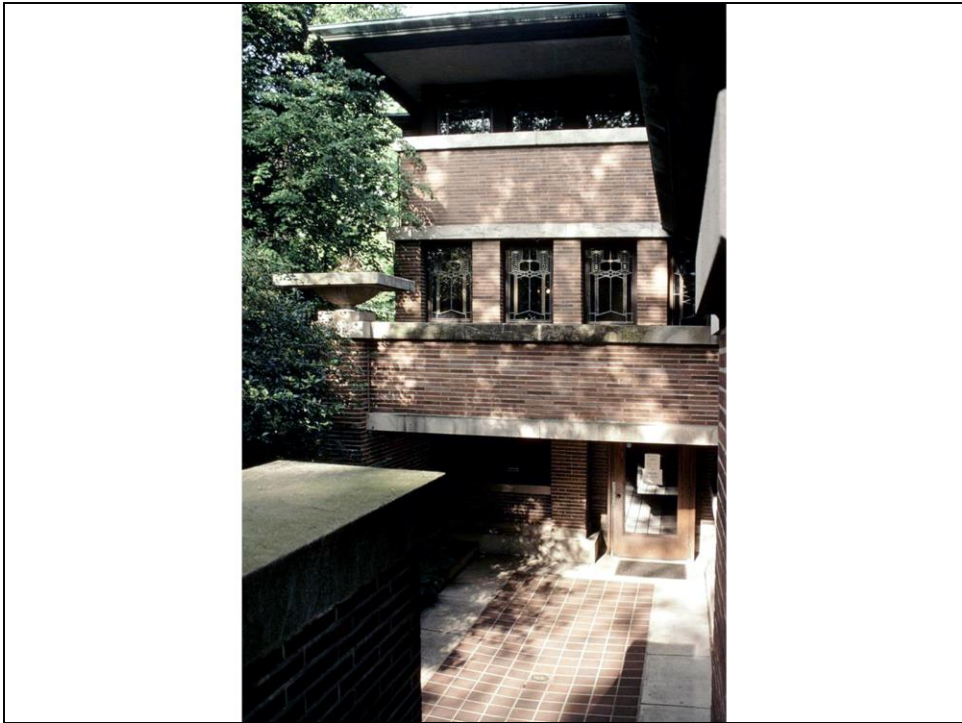
F.L. Wright, Frederick C. Robie House, Chicago (1908-10): dettaglio della facciata



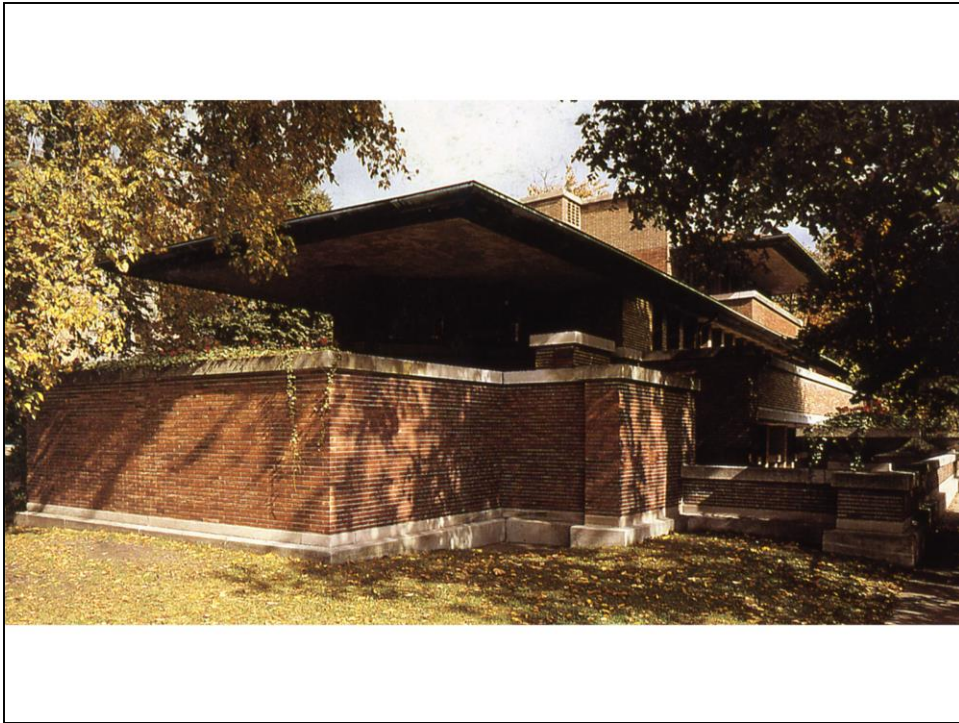
F.L. Wright, Frederick C. Robie House, Chicago (1908-10): piante



F.L. Wright, Frederick C. Robie House, Chicago (1908-10): dettaglio della facciata



F.L. Wright, Frederick C. Robie House, Chicago (1908-10)



F.L. Wright, Frederick C. Robie House, Chicago (1908-10): la loggia



F.L. Wright, Frederick C. Robie House, Chicago (1908-10)



F.L. Wright, Frederick C. Robie House, Chicago (1908-10)





F.L. Wright, Frederick C. Robie House, Chicago (1908-10): il soggiorno



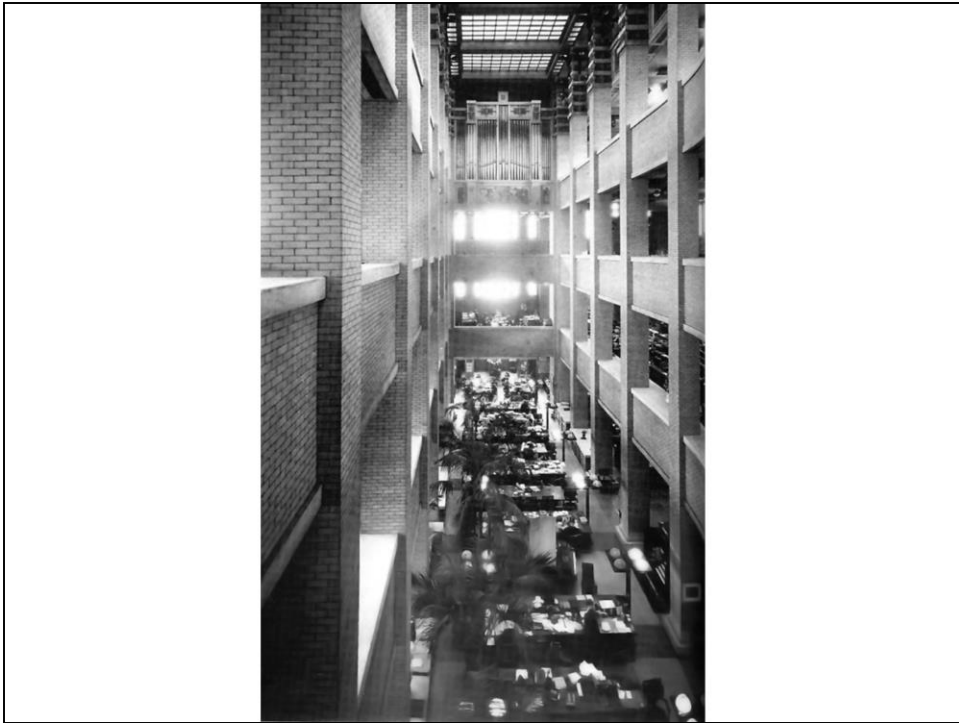
F.L. Wright, Frederick C. Robie House, Chicago (1908-10)



F.L. Wright, Larkin Building, Buffalo, N.Y. (1904-06)



F.L. Wright, Larkin Building, Buffalo, N.Y. (1904-06): lo spazio interno a tutta altezza



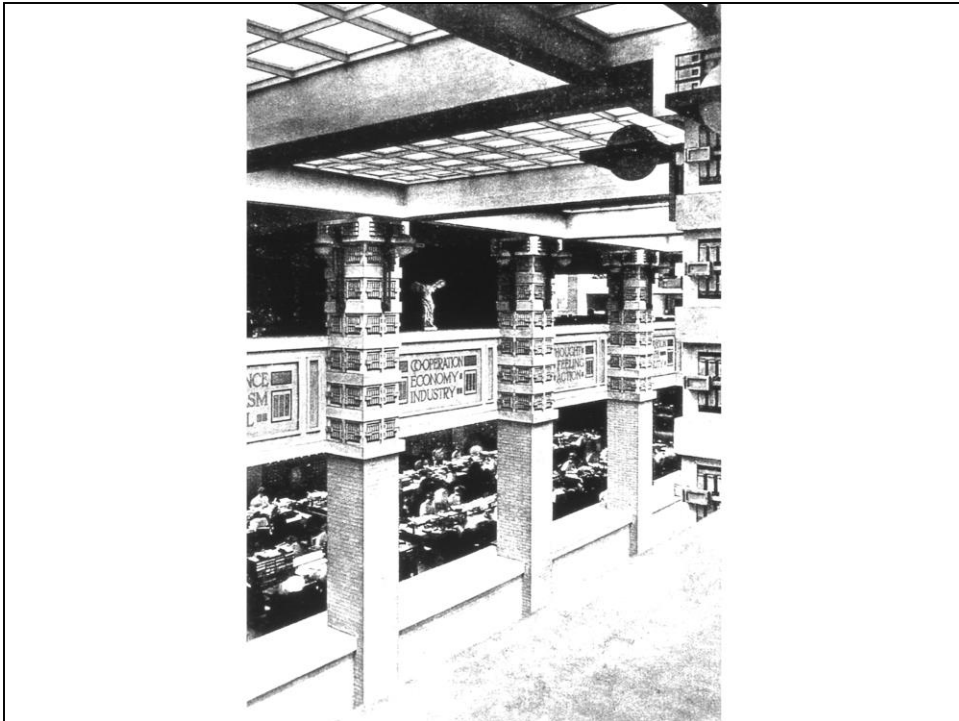
F.L. Wright, Larkin Building, Buffalo, N.Y. (1904-06): lo spazio interno a tutta altezza



F.L. Wright, Larkin Building, Buffalo, N.Y. (1904-06): uno dei ballatoi

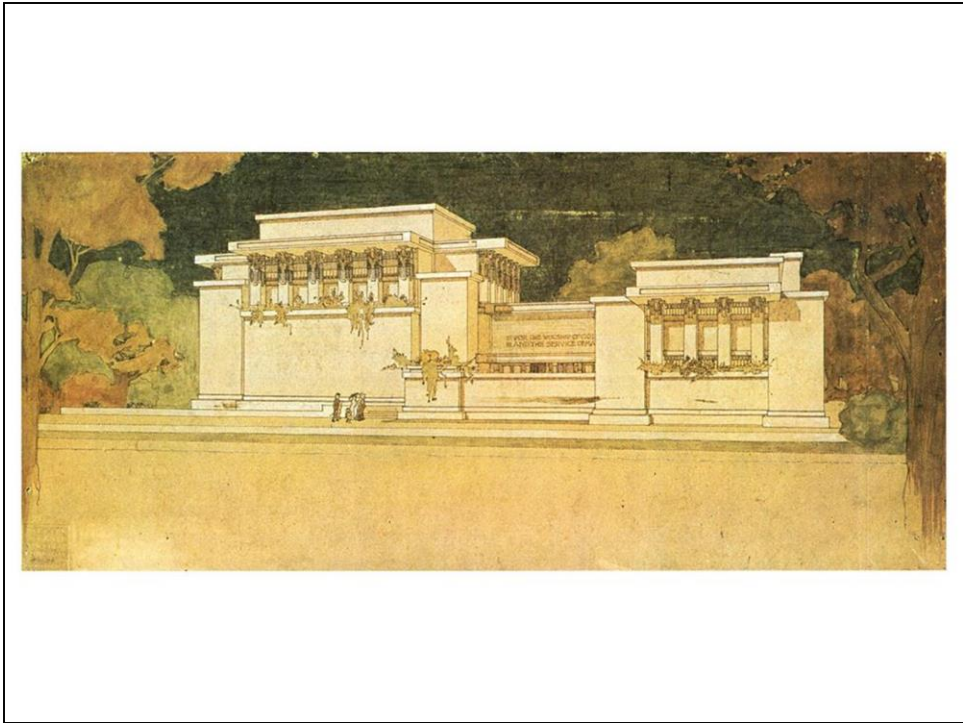


F.L. Wright, Larkin Building, Buffalo, N.Y. (1904-06)

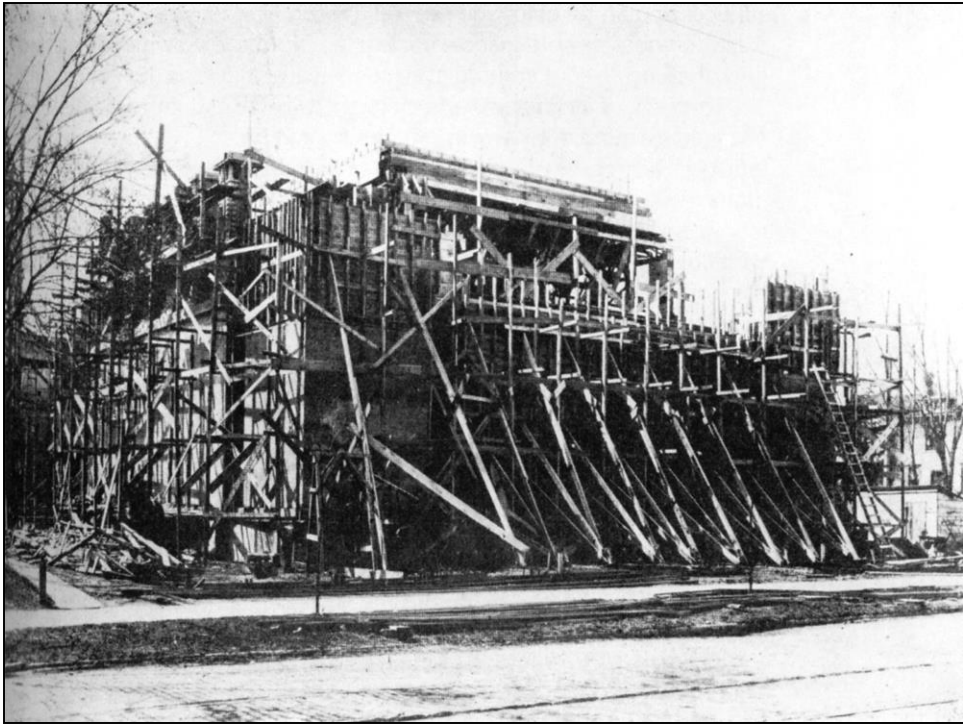


F.L. Wright, Larkin Building, Buffalo, N.Y. (1904-06): lo spazio interno a tutta altezza





F.L. Wright, Unity Temple, Oak Park, Ill. (1905-08)



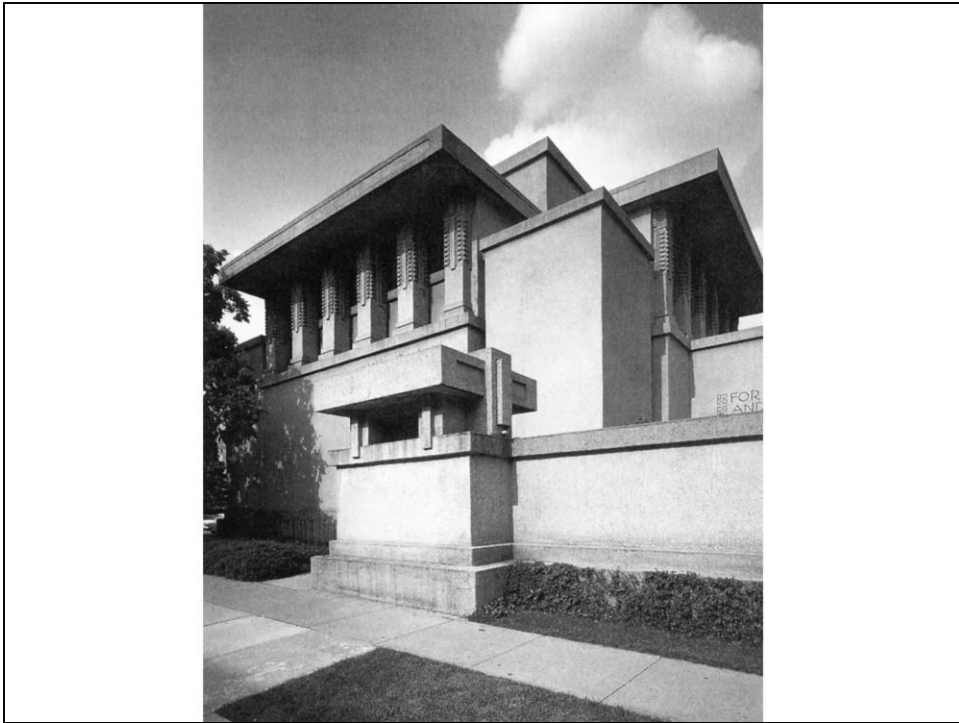
F.L. Wright, Unity Temple, Oak Park, Ill. (1905-08): il cantiere



F.L. Wright, Unity Temple, Oak Park, Ill. (1905-08)



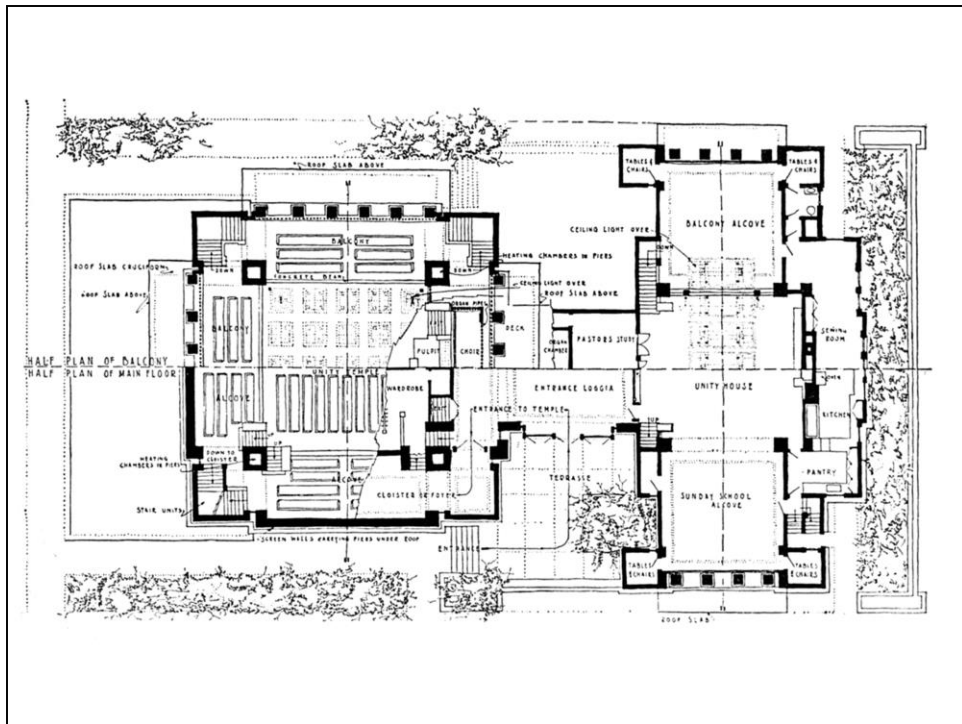
F.L. Wright, Unity Temple, Oak Park, Ill. (1905-08)



F.L. Wright, Unity Temple, Oak Park, Ill. (1905-08)



Tempio del Giaguaro, Chichen Itza, Messico (cultura Maya di epoca postclassica)



F.L. Wright, Unity Temple, Oak Park, Ill. (1905-08): piante

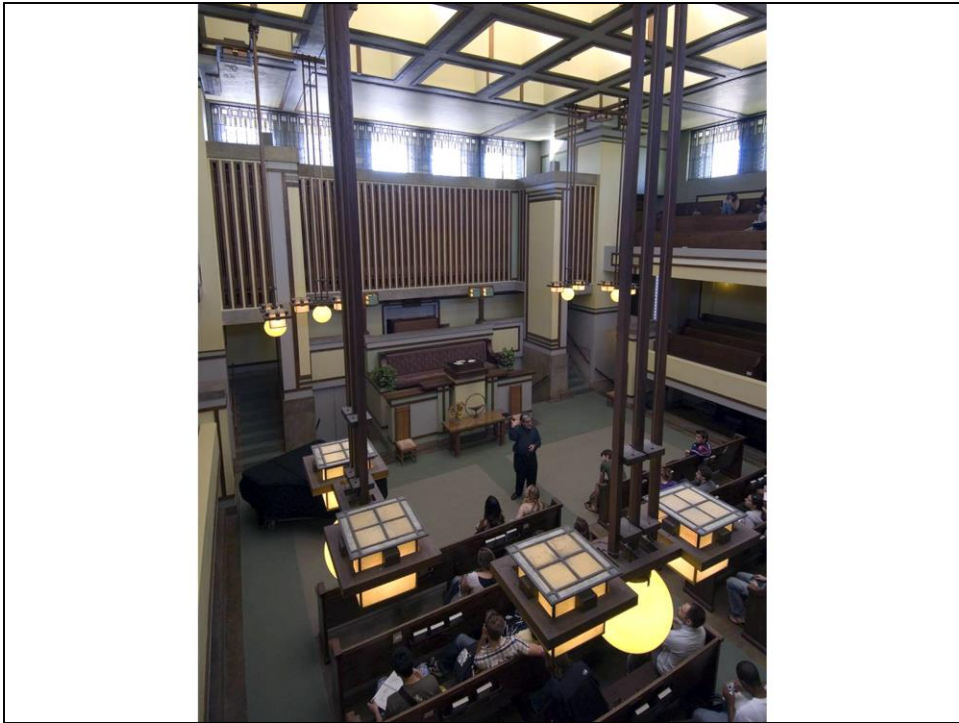


F.L. Wright, Unity Temple, Oak Park, Ill. (1905-08): l'ingresso

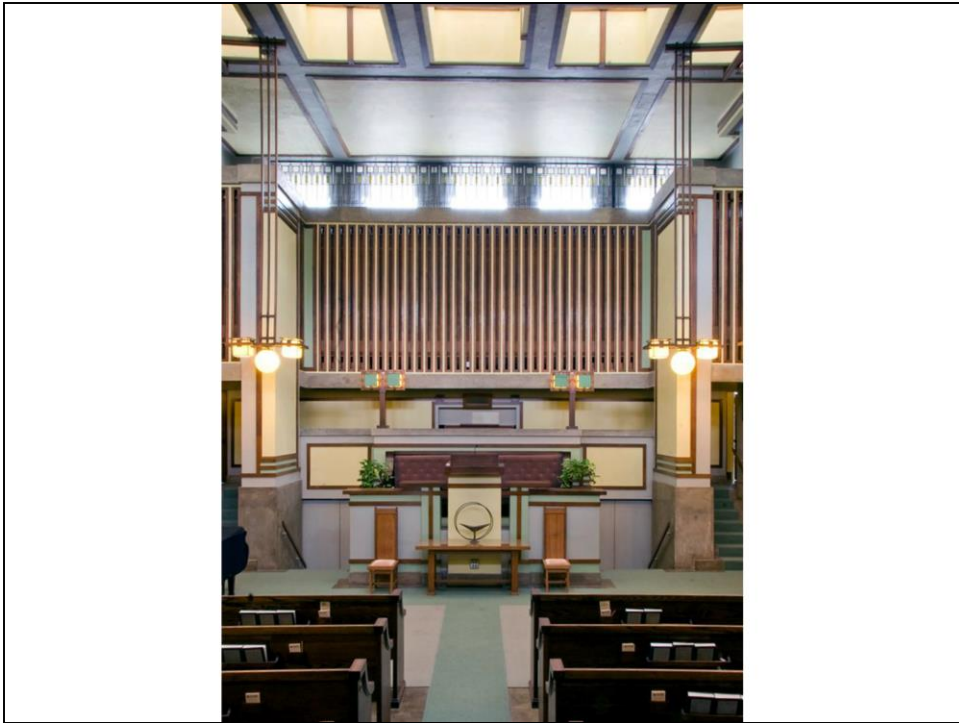




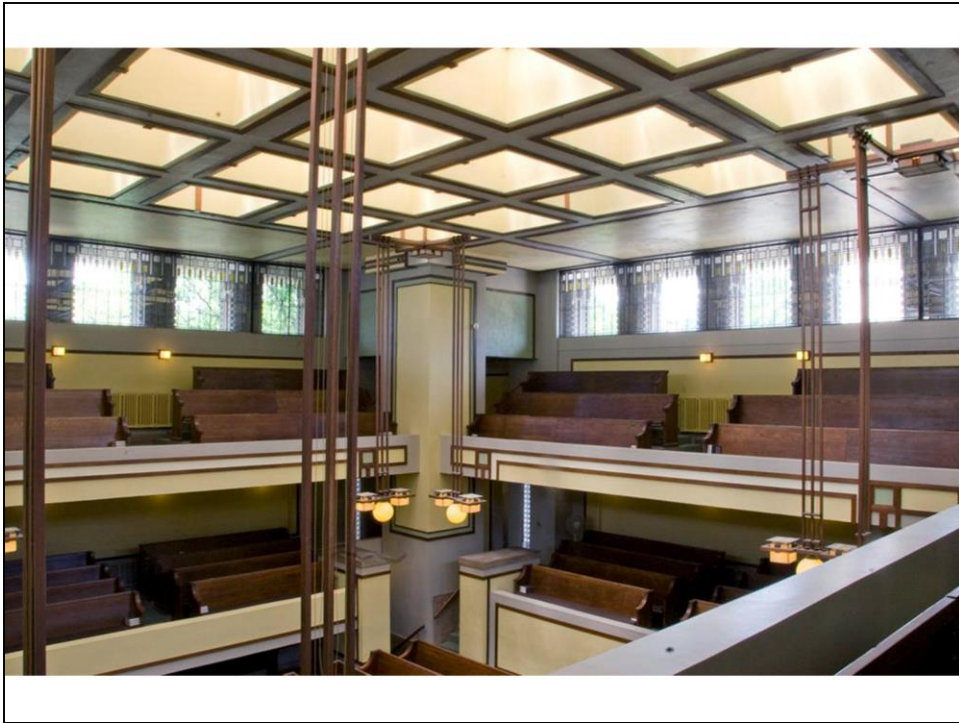
F.L. Wright, Unity Temple, Oak Park, Ill. (1905-08): il foyer d'ingresso



F.L. Wright, Unity Temple, Oak Park, Ill. (1905-08)



F.L. Wright, Unity Temple, Oak Park, Ill. (1905-08)



F.L. Wright, Unity Temple, Oak Park, Ill. (1905-08)



F.L. Wright, Unity Temple, Oak Park, Ill. (1905-08): interno dell'edificio per le attività della comunità