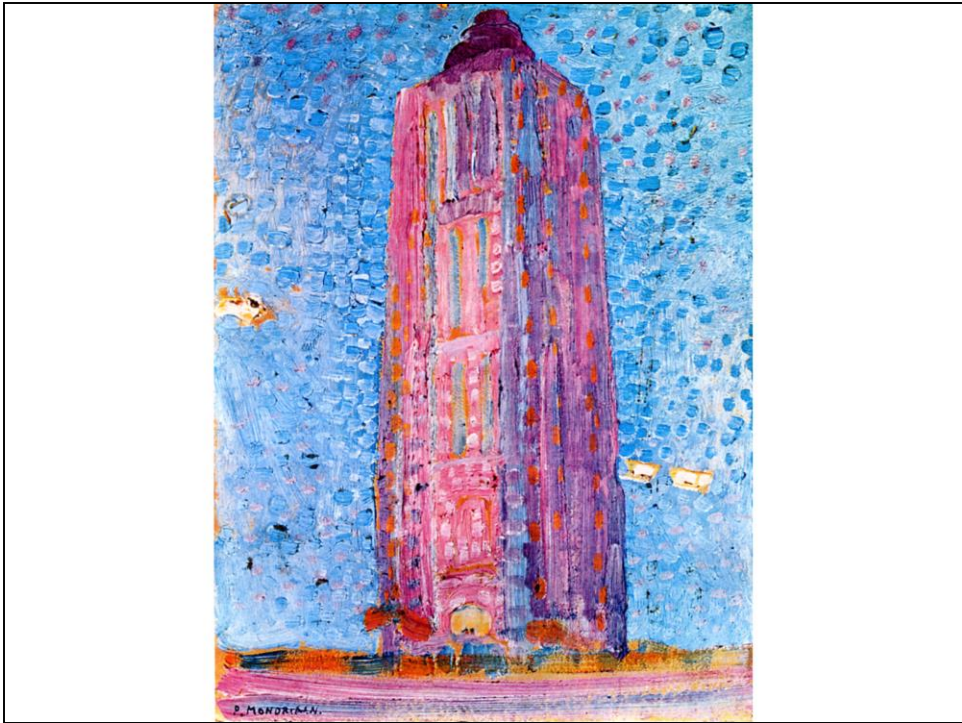


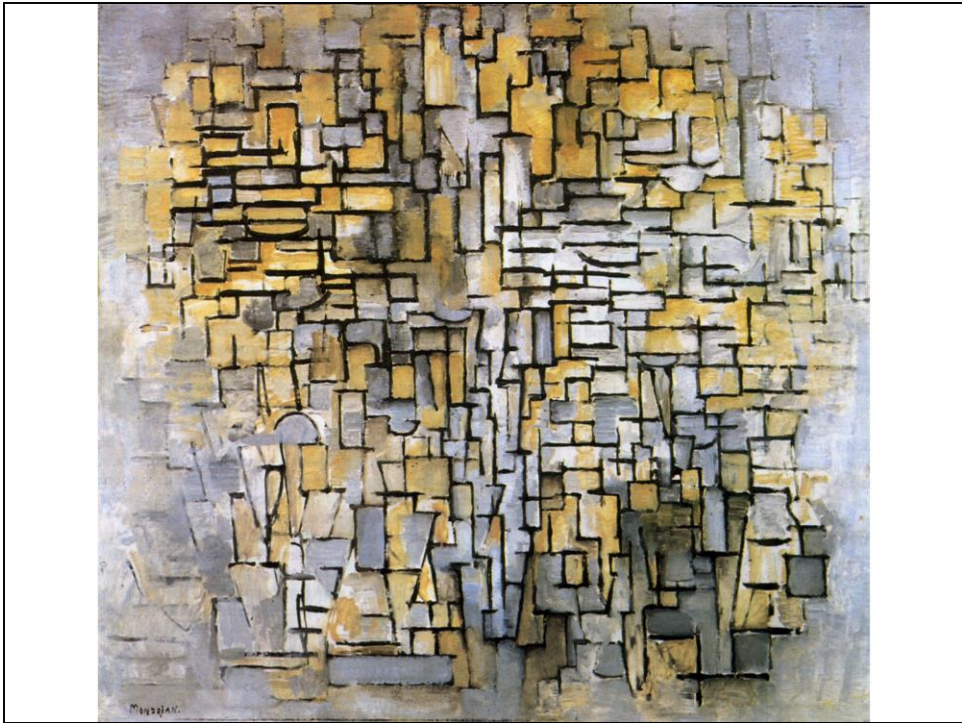
Copertina della rivista De Stijl, 1921



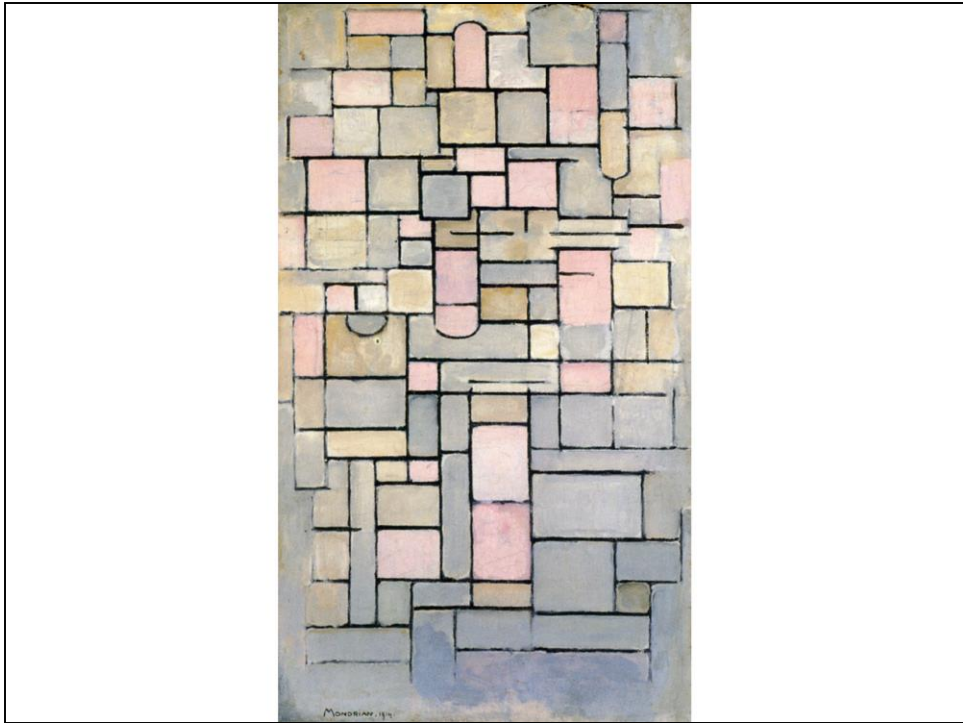
Ritratto fotografico di Theo van Doesburg



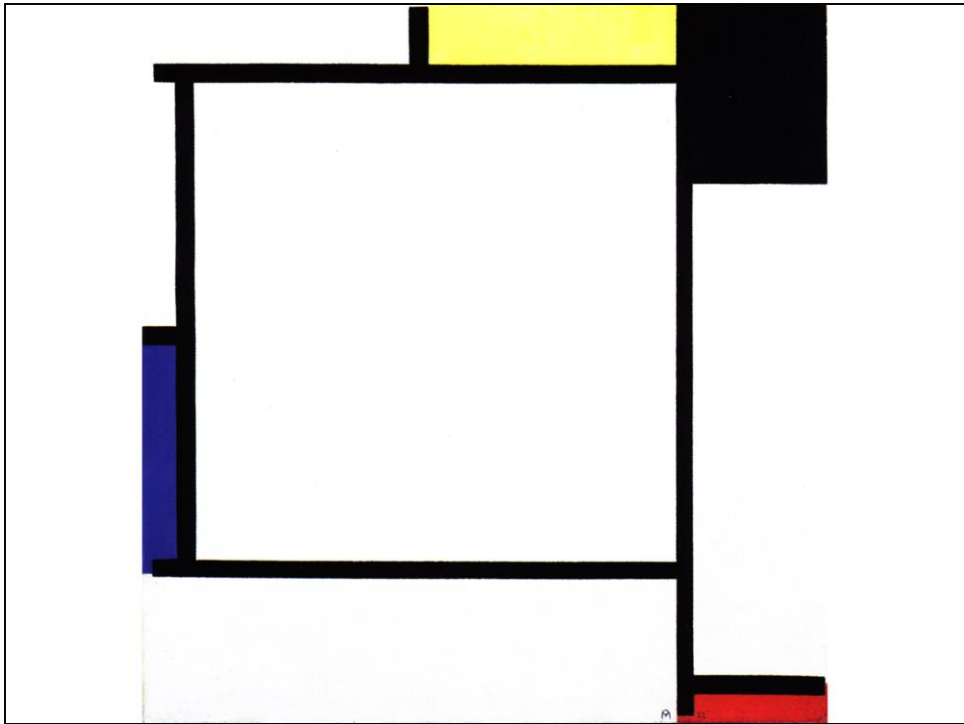
P. Mondrian, Faro a Westkapelle, 1909-10



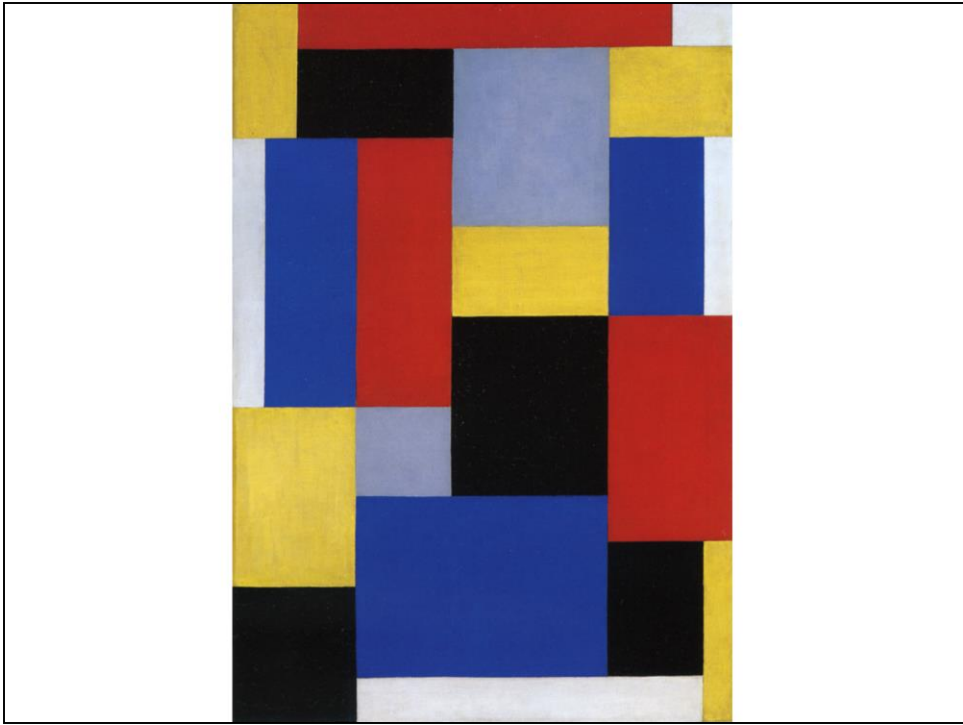
P. Mondrian, Composizione VII, 1913



P. Mondrian, Composizione n. 8, 1914



P. Mondrian, Composizione n. 2, 1922



Theo van Doesburg, Composizione XX, 1920

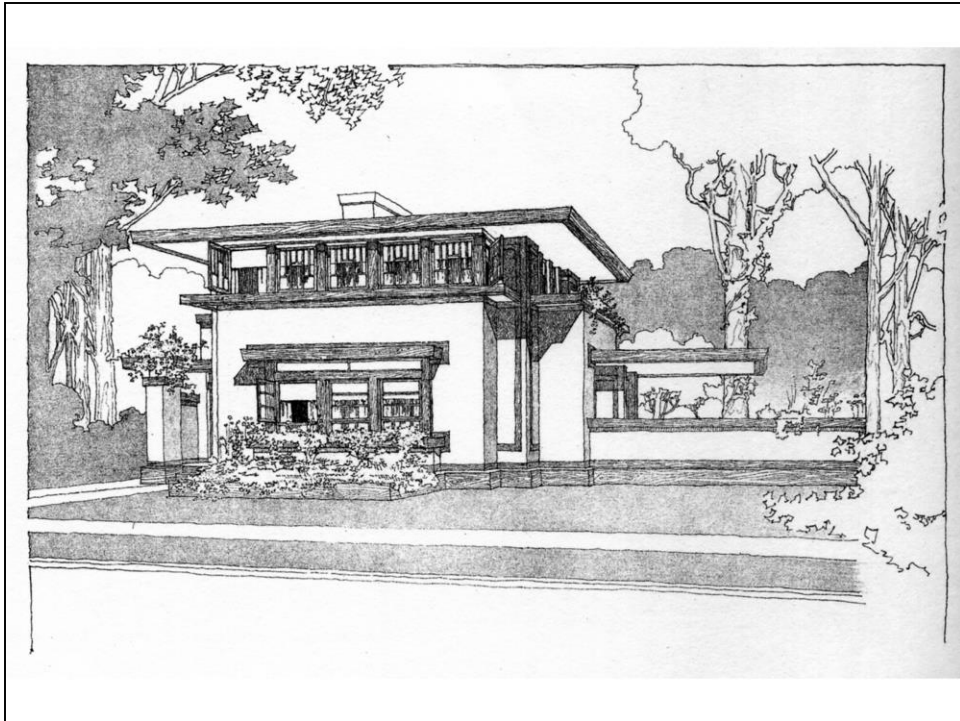


Theo van Doesburg, Contra-Compositie XIII, 1925-26

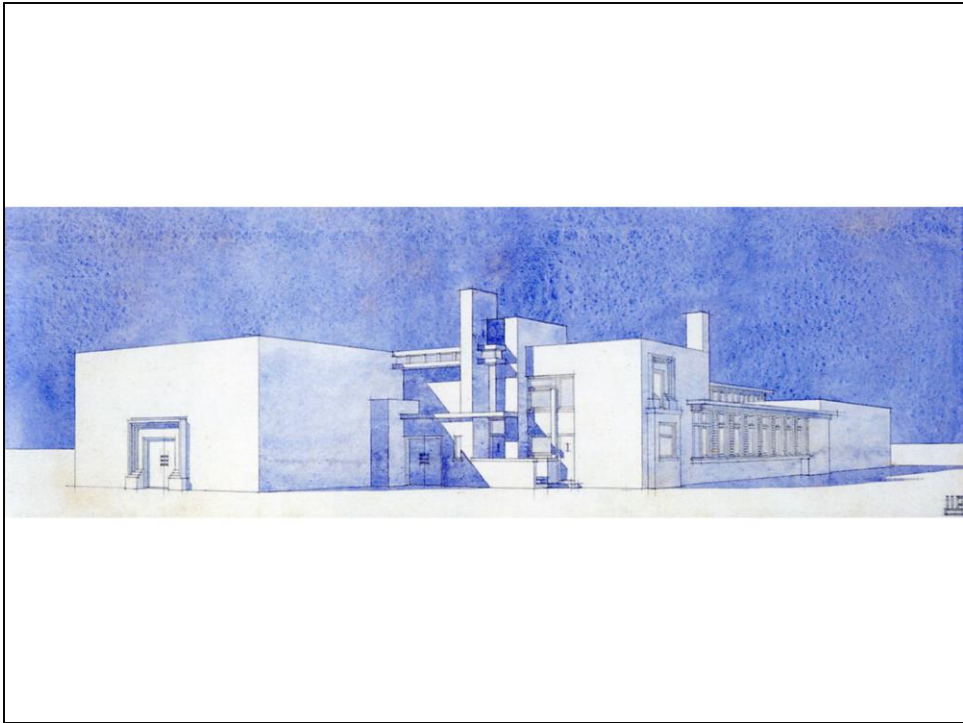




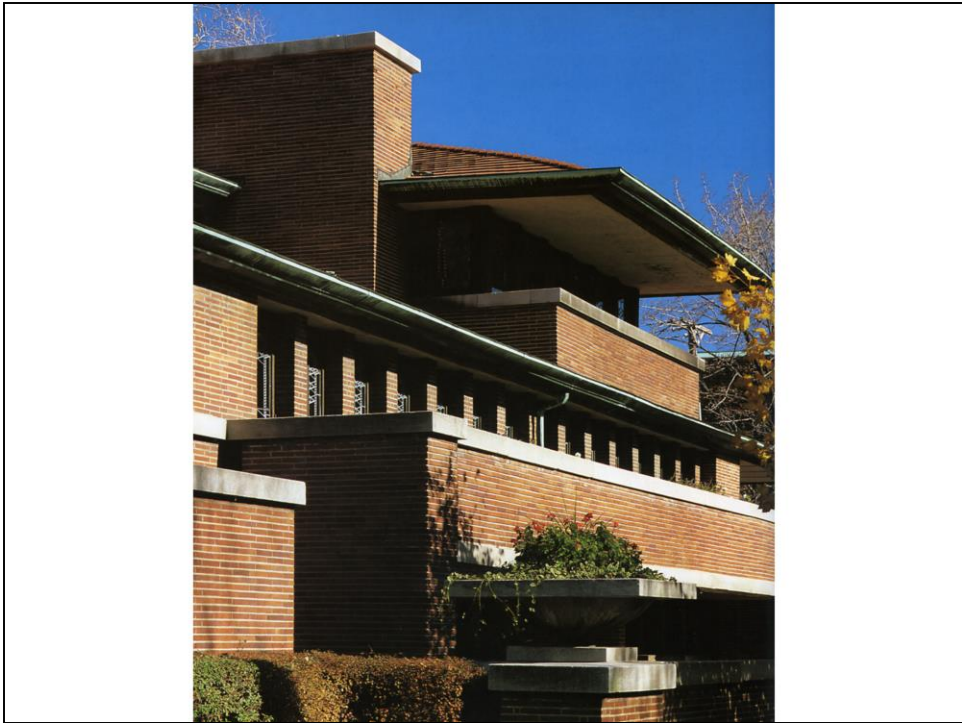
R. van't Hoff, Casa a Huis ter Heide (1916)



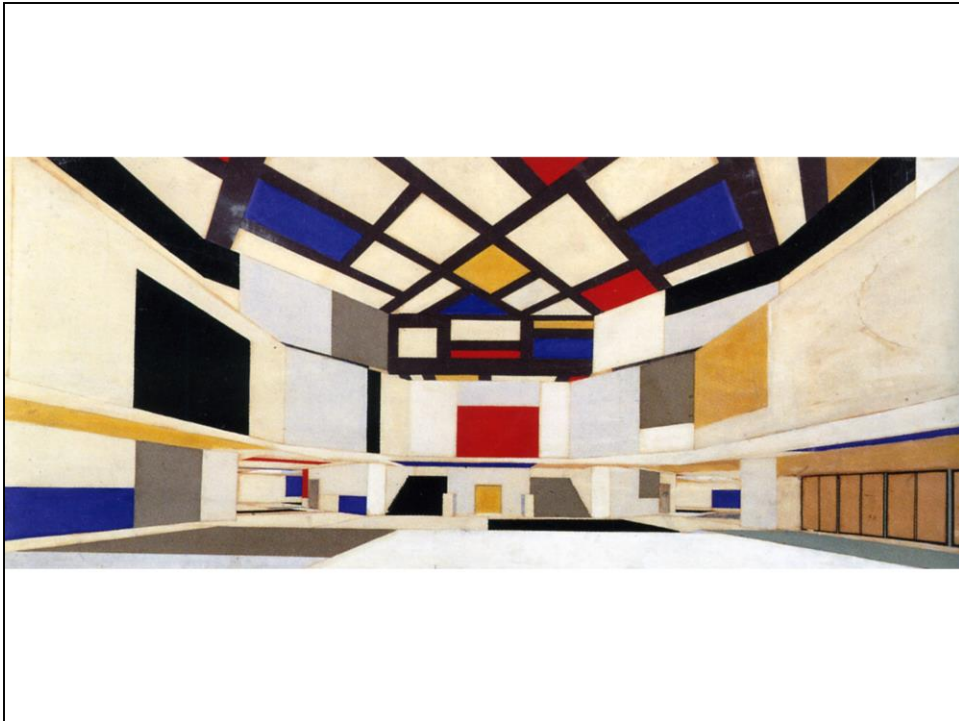
F.L. Wright, Villetta-tipo per una lottizzazione per conto di mister Waller, da Ausgeführte Bauten und Entwürfe von Frank Lloyd Wright, Berlin, Wasmuth, 1910-1911



J.J.P. Oud, Fabbrica (1919)



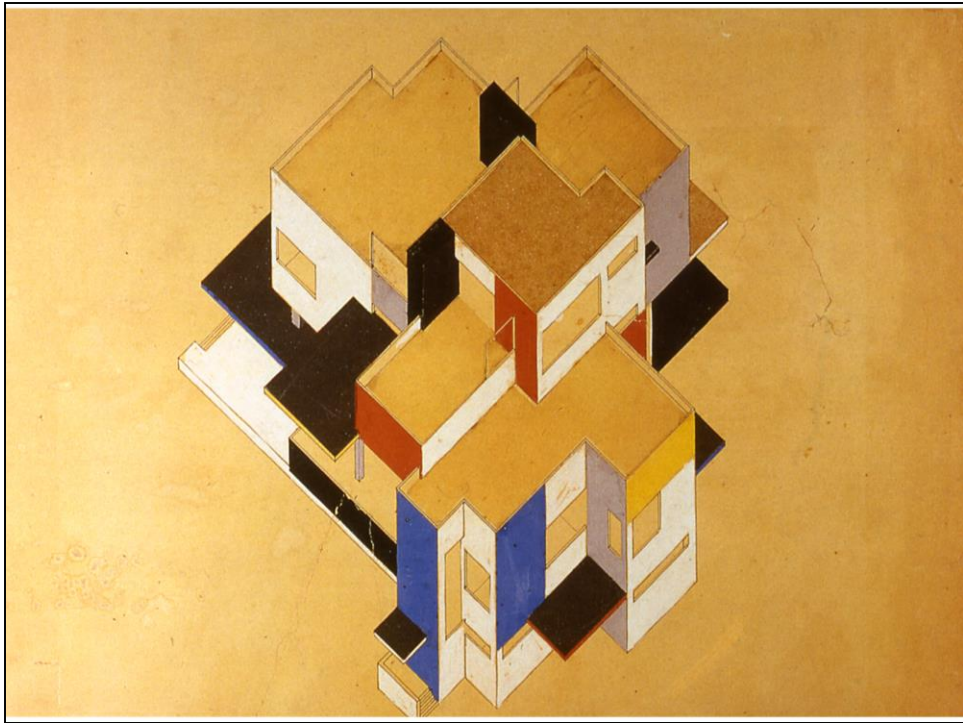
F.L. Wright, Robie House, Oak Park, Ill. (1908-10)



C. Van Eesteren e T. van Doesburg, Composizione cromatica per l'atrio dell'Università di Amsterdam (1922-23)

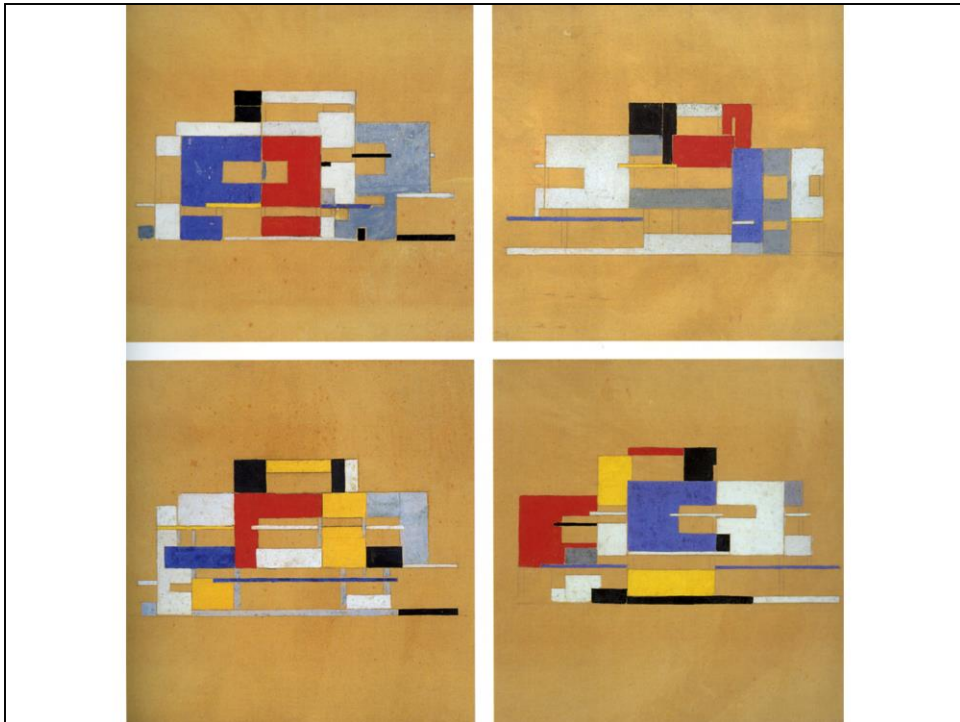


G. Rietveld, Sedia rosso/blu (1917-18 )



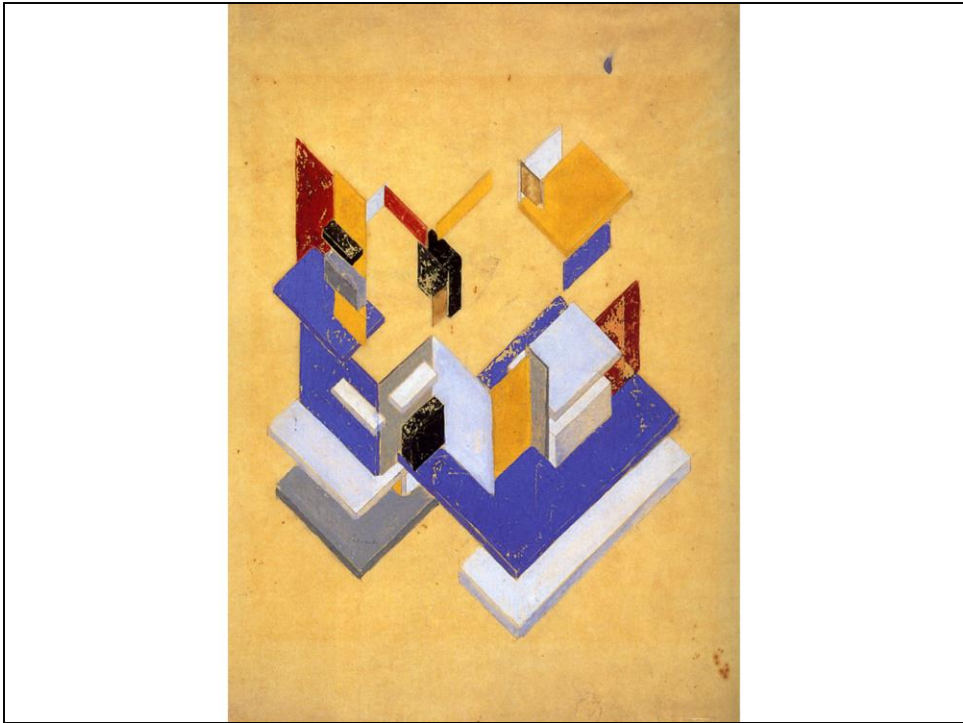
C. Van Eesteren e T. van Doesburg, Maison particulière (1923)



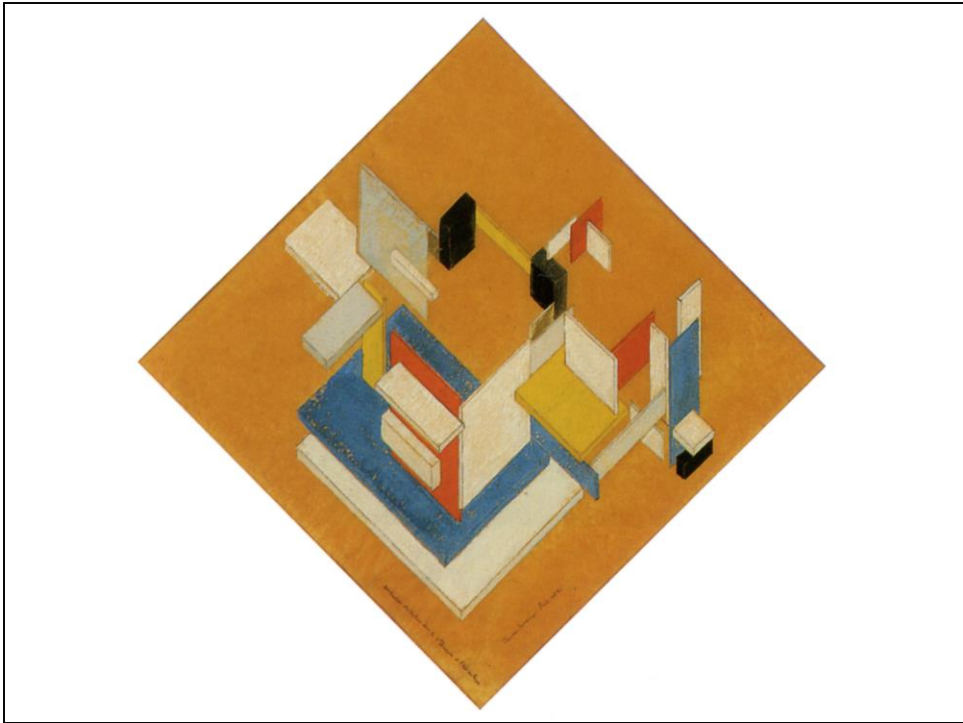


C. Van Eesteren e T. van Doesburg, Maison partielière (1923): analisi dell'architettura, contro-costruzione. Determinazione dei differenti piani dell'architettura attraverso il colore





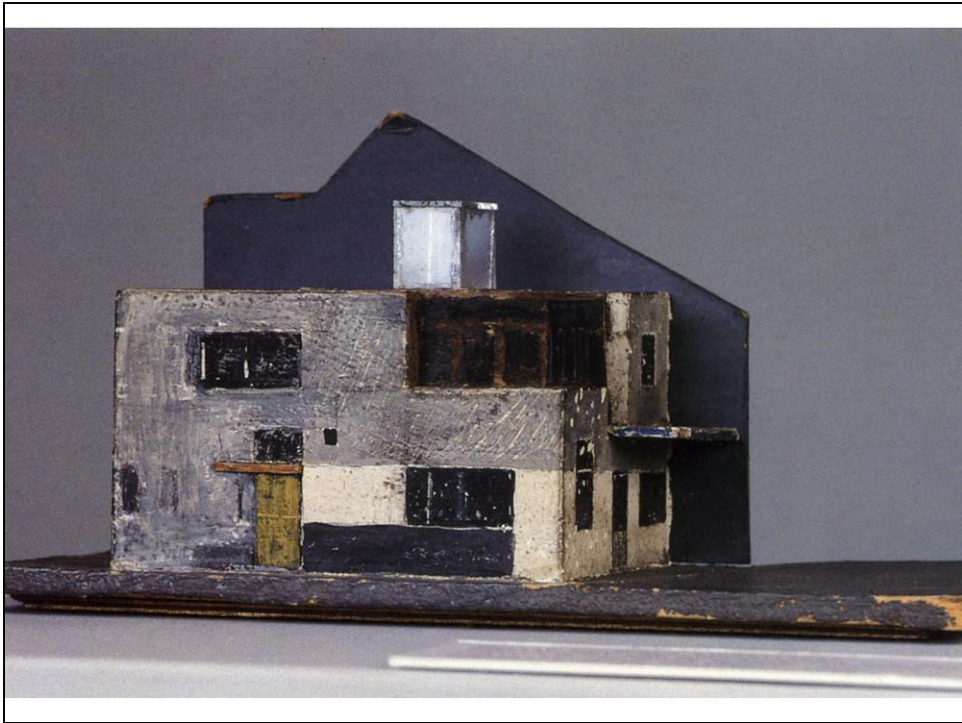
T. van Doesburg, Contro-costruzione (1923-24)



T. van Doesburg, Contro-costruzione (1924)



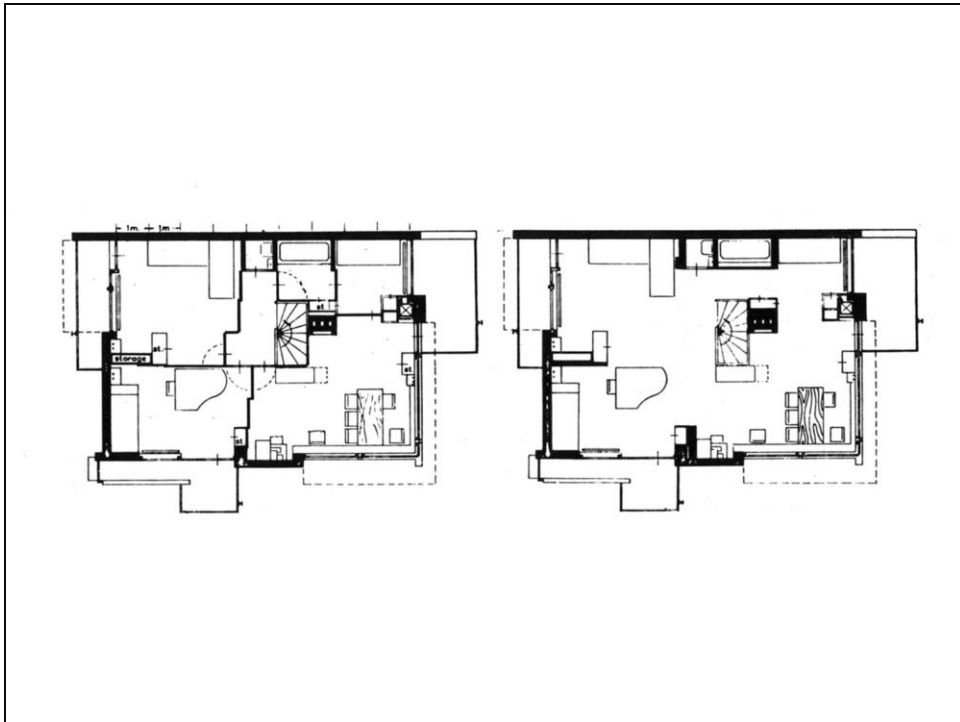
G. Rietveld, Casa Schröder, Utrecht (1923-24)



G. Rietveld, Casa Schröder, Utrecht (1923-24): modello del primo progetto



G. Rietveld, Casa Schröder, Utrecht (1923-24): piante del piano terra (a sinistra) e del primo piano (a destra)



G. Rietveld, Casa Schröder, Utrecht (1923-24): piante del primo piano con disposizioni diverse delle pareti scorrevoli



G. Rietveld, Casa Schröder, Utrecht (1923-24)

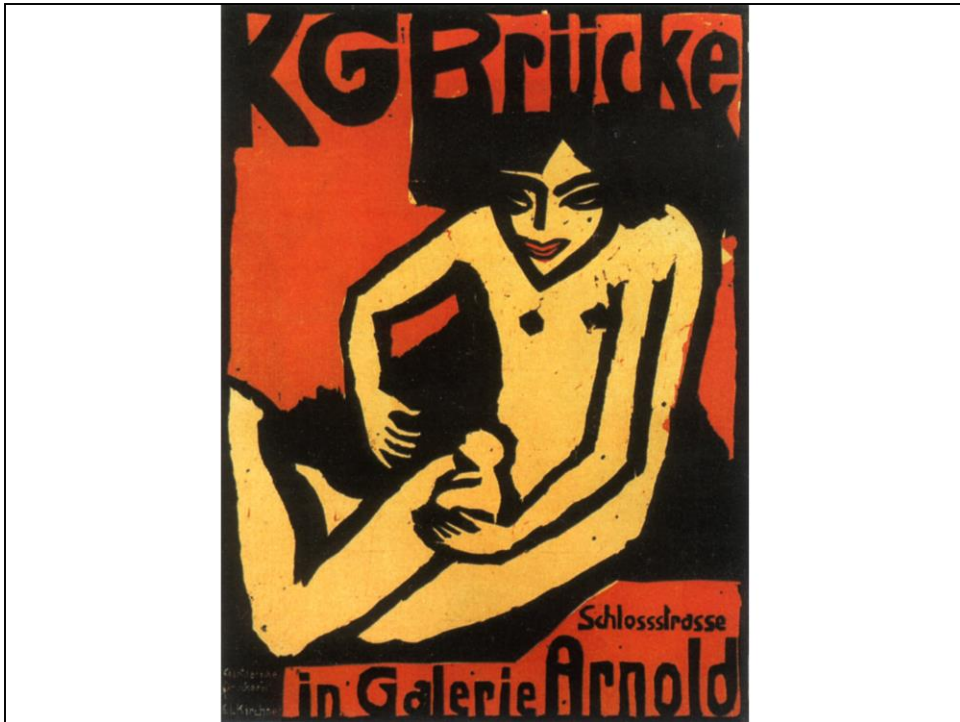


G. Rietveld, Casa Schröder, Utrecht (1923-24): l'interno al piano superiore

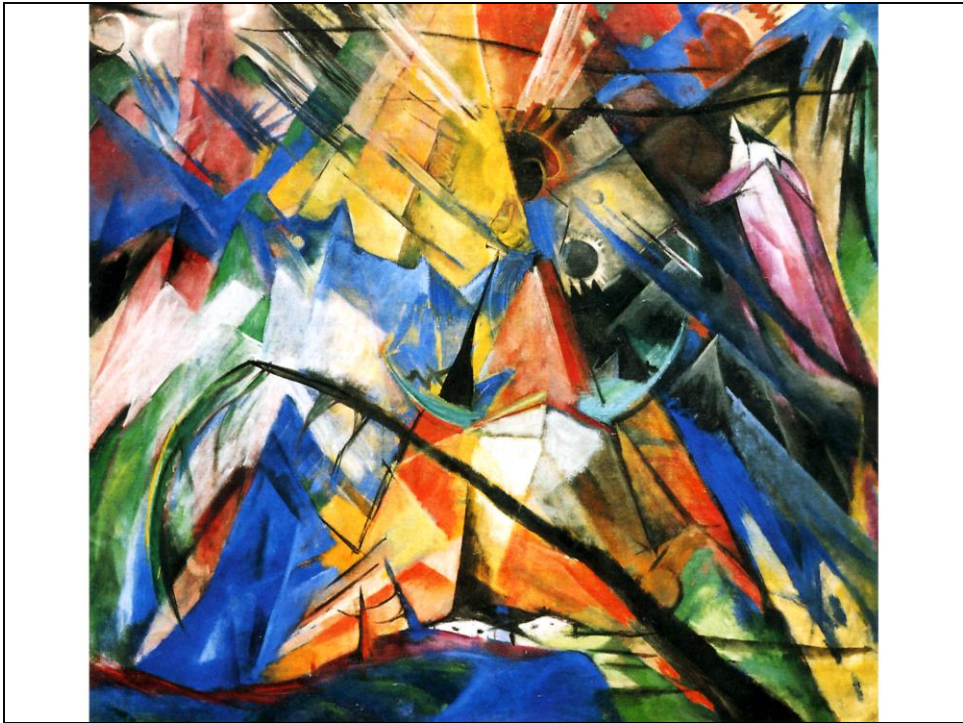




G. Rietveld, Casa Schröder, Utrecht (1923-24): l'interno al piano superiore



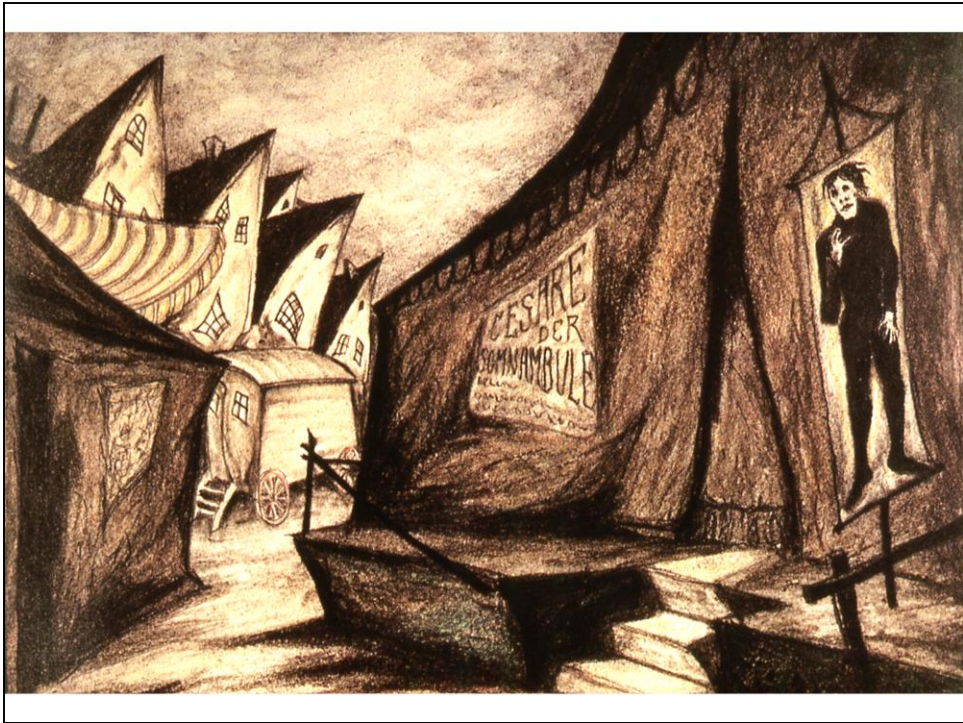
E.L. Kirchner, Manifesto per l'esposizione del gruppo Die Brücke alla Galerie Arnold di Berlino, 1910



F. Marc, Tirolo, 1913-14



Max Pechstein (?), Vignetta per il programma dell' Arbeitsrat für Kunst, 1919



Hermann Warm, La fiera, dipinto, 1920





Robert Wiene, Das Kabinett des Doktor Caligari, 1920: fotogramma

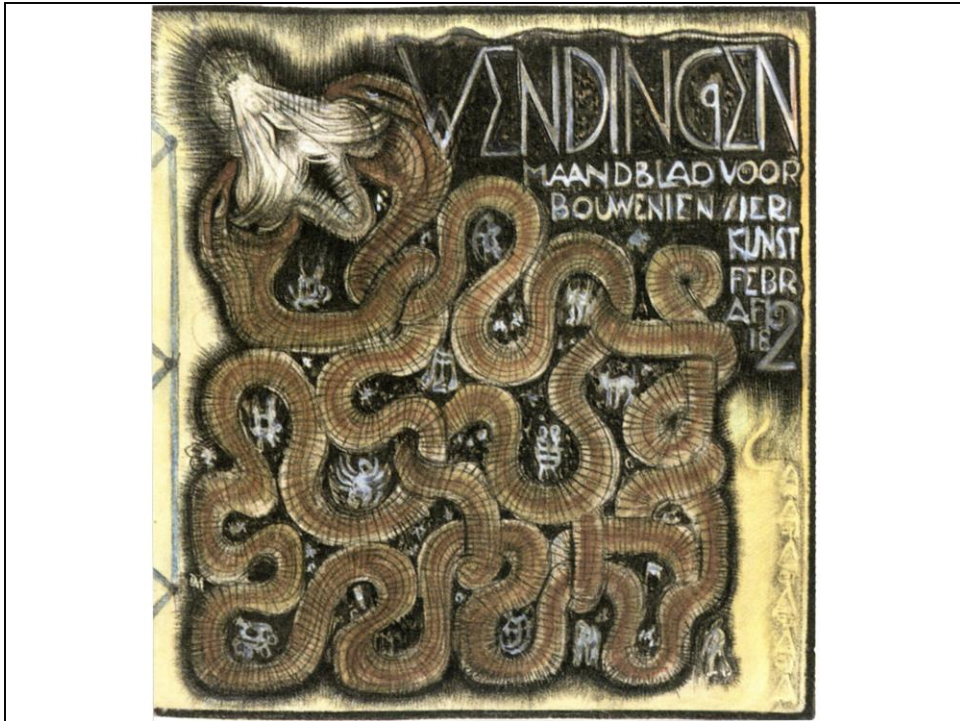


Nikolaus Braun, Berliner Strassenszene, 1921



Fritz Lang, Metropolis, 1927: fotogramma

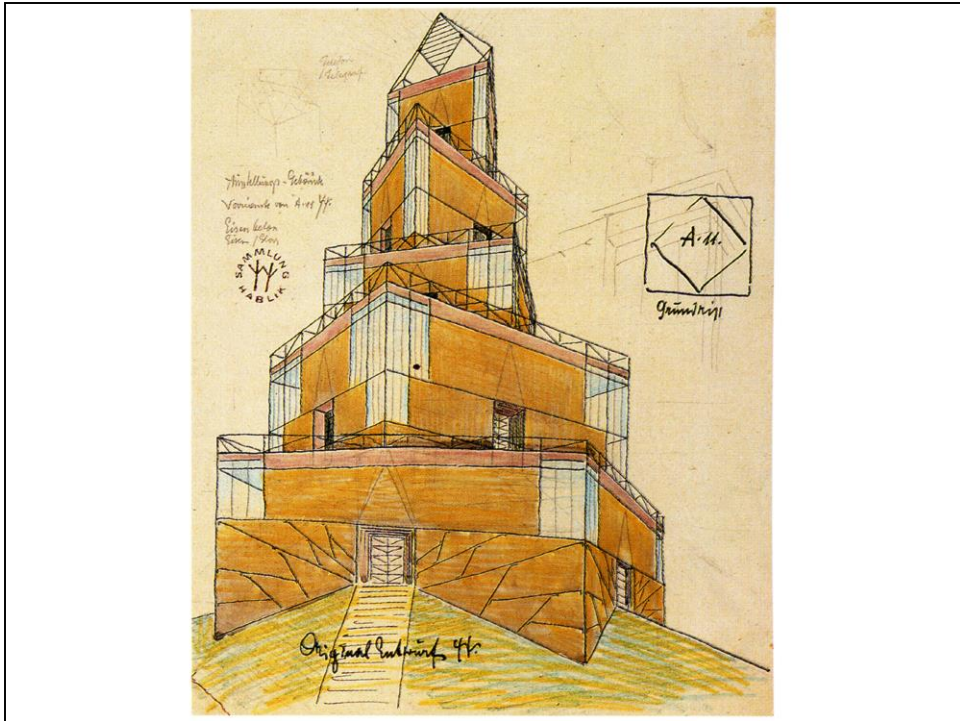




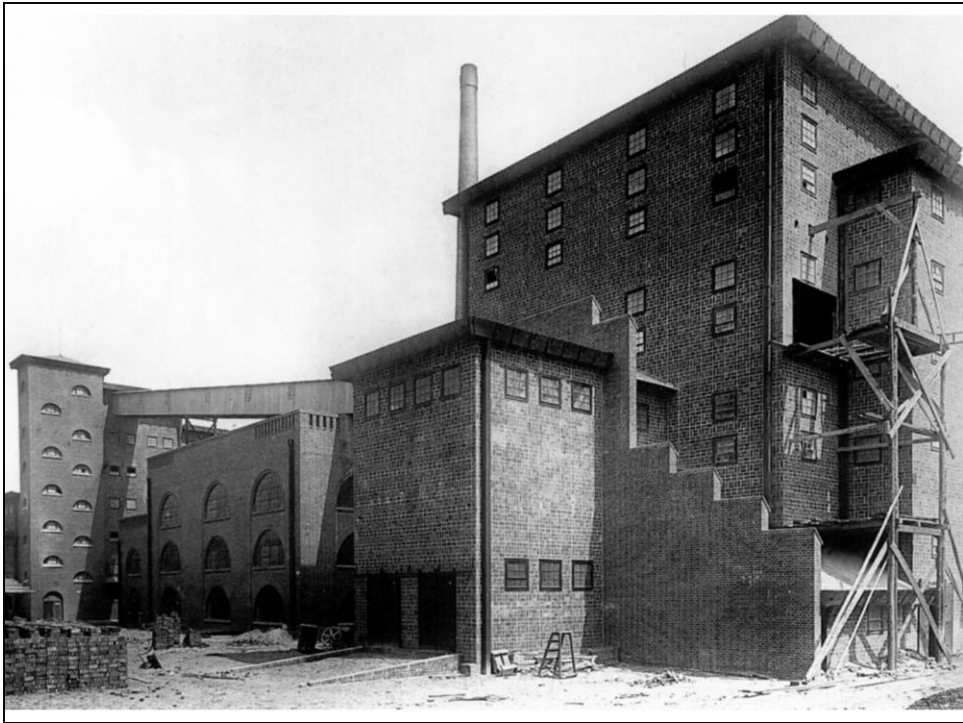
M. De Klerk, Disegno per la copertina di Wendingen, 1918



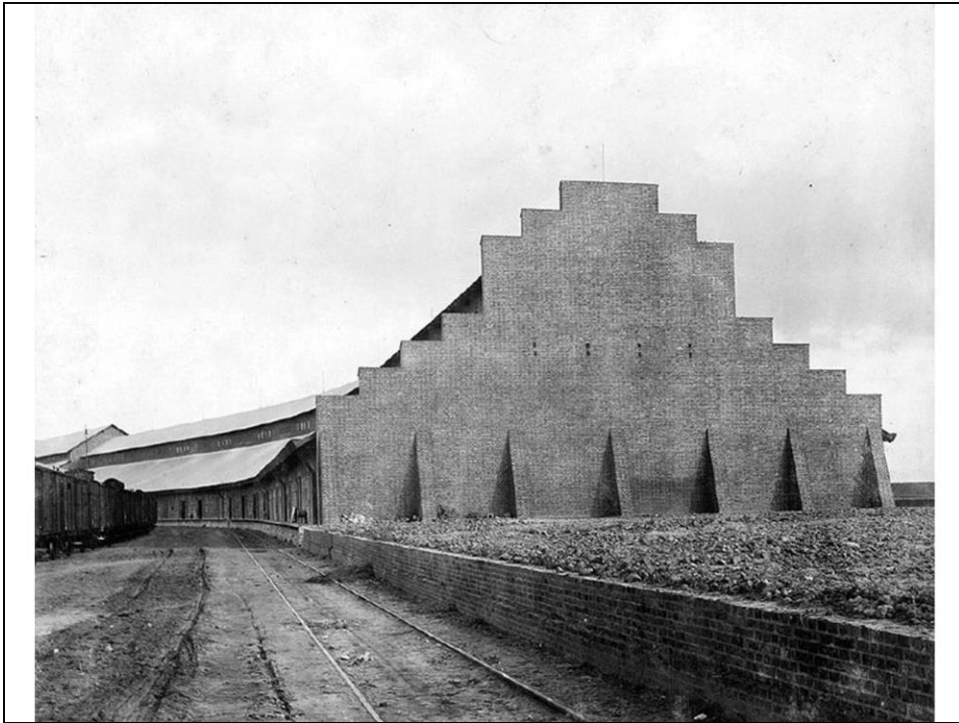
M. De Klerk, Complesso di abitazioni Eigen Haard, terzo blocco, Amsterdam (1917)



Wenzel Hablik, Edificio per esposizioni, 1920 ca.



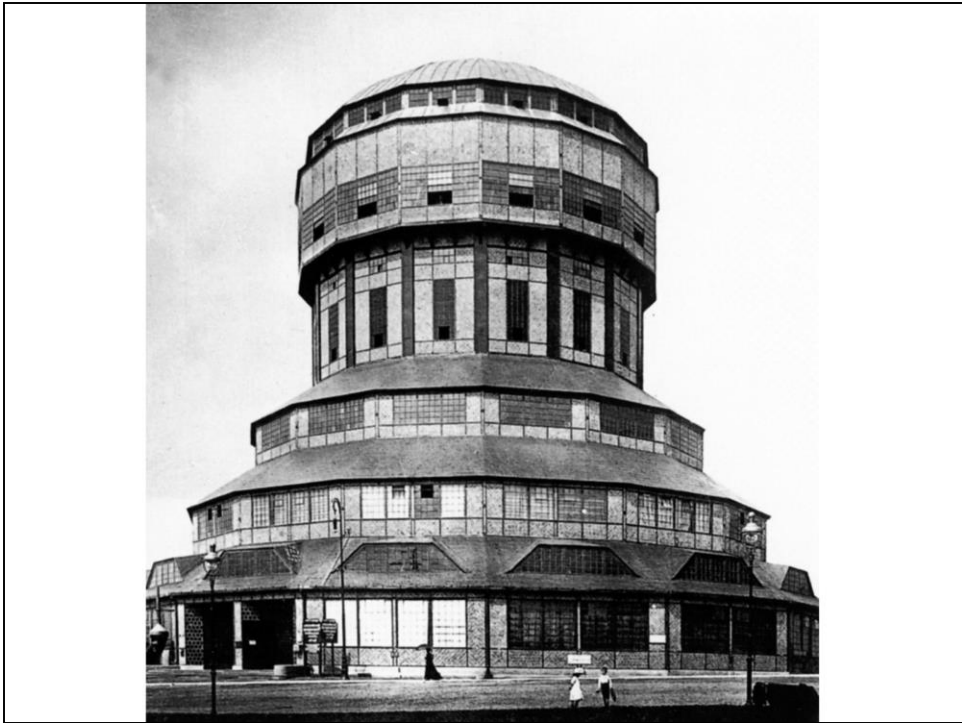
H. Poelzig, Fabbrica di acido solforico, Luban (1911-1912)



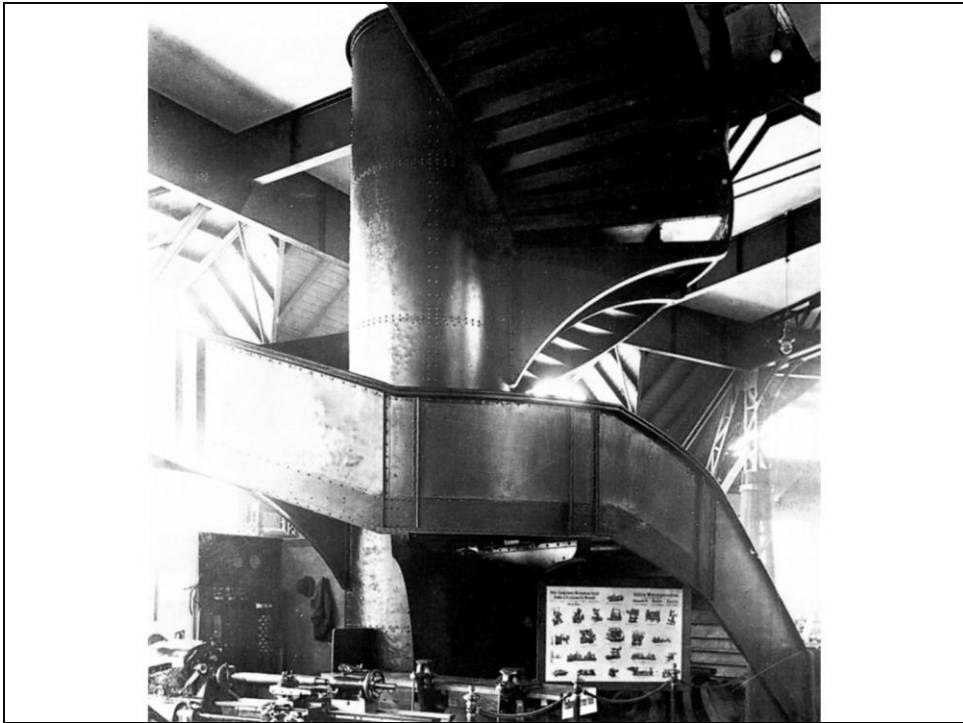
H. Poelzig, Fabbrica di acido solforico, Luban (1911-1912)



Fritz Höger, Chilehaus, Amburgo (1922-1924)

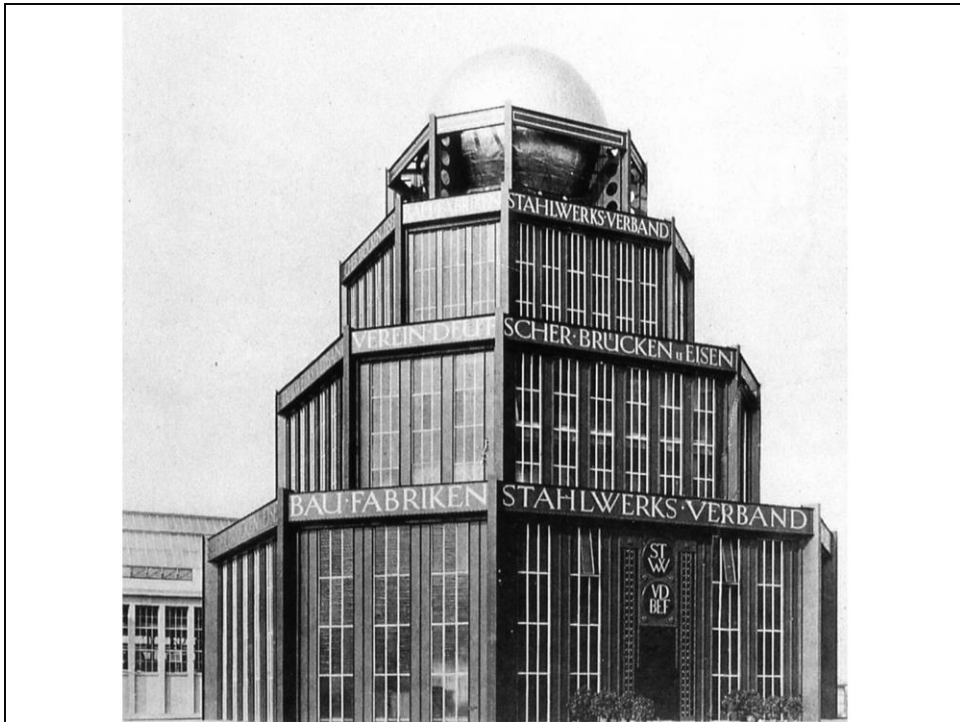


Hans Poelzig, Torre dell'acqua, Posen (Poznan), 1911

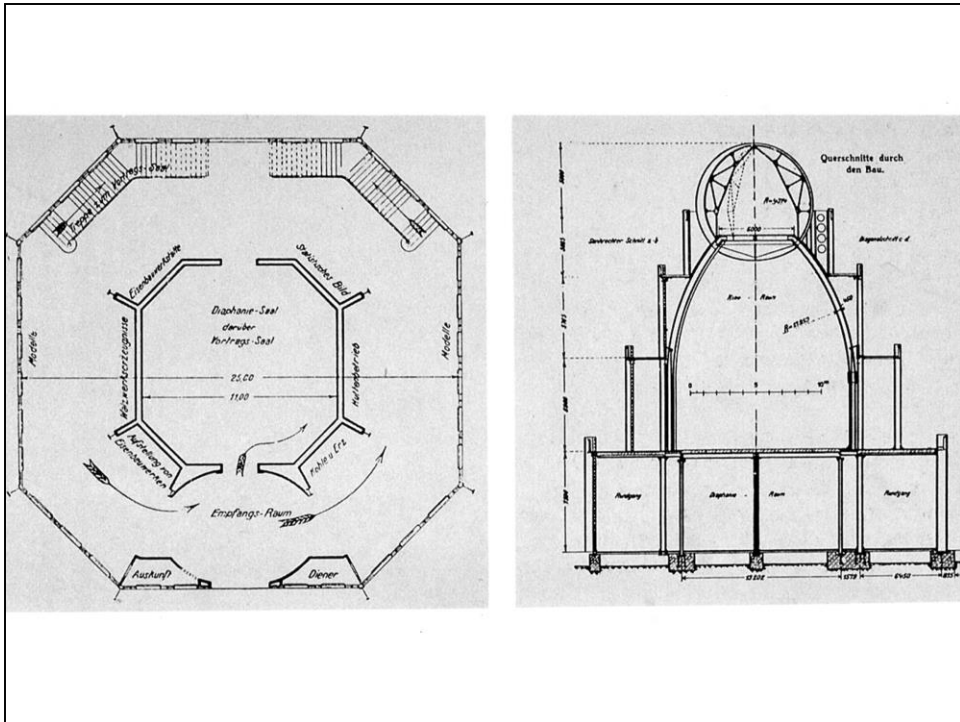


Hans Poelzig, Torre dell'acqua: scala interna, Posen, 1911

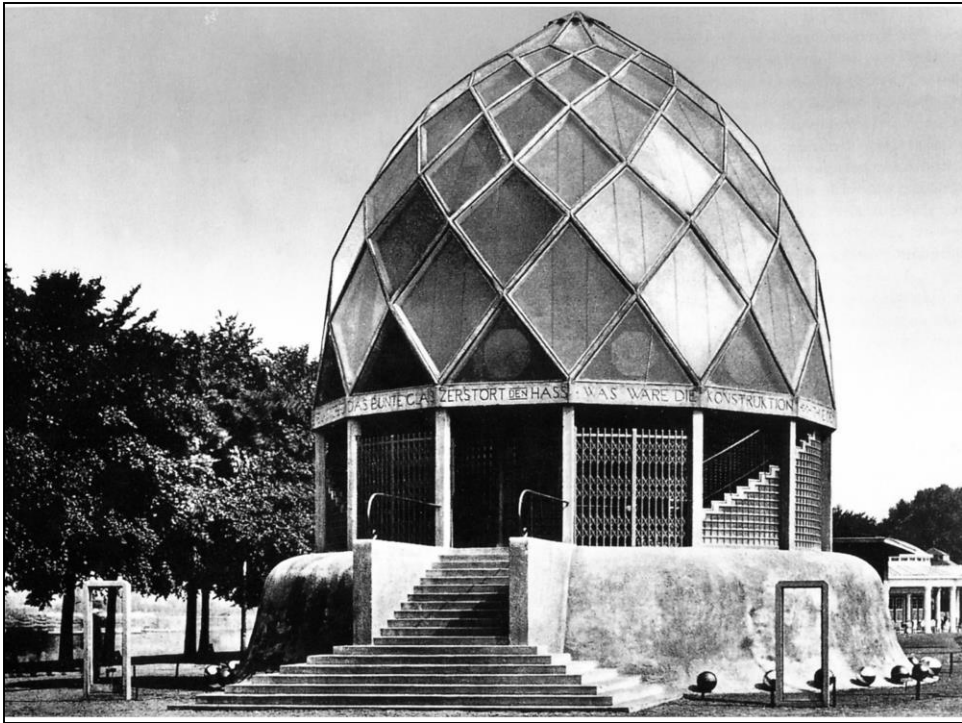




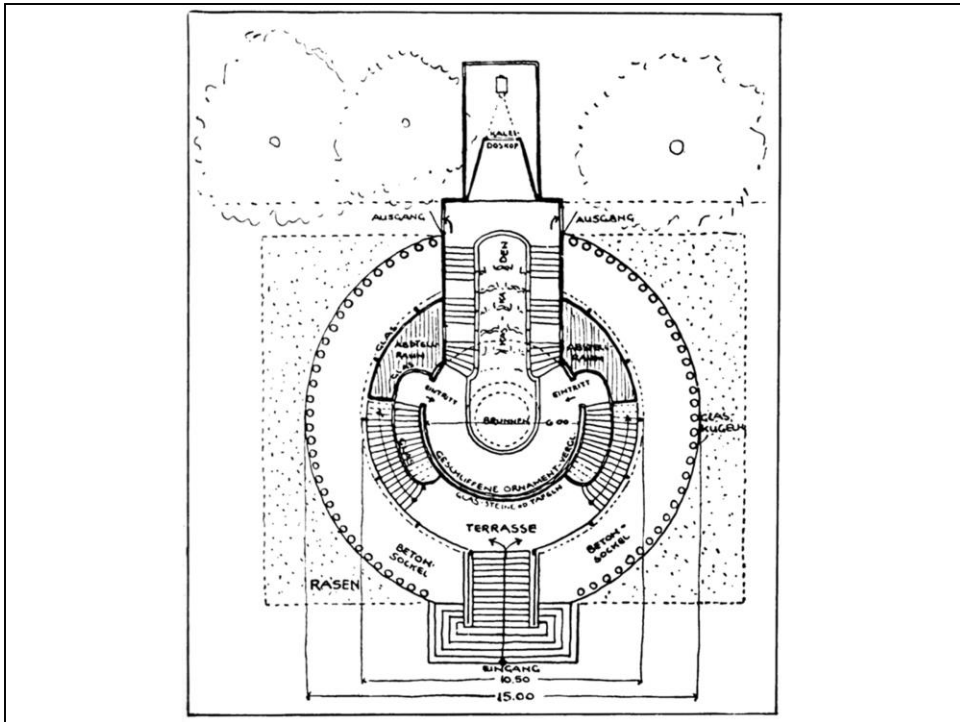
B. Taut, Padiglione dell'industria dell'acciaio, Lipsia (1913)



B. Taut, Padiglione dell'industria dell'acciaio, Lipsia (1913): pianta e sezione



B. Taut, Padiglione dell'industria del vetro, Colonia (1914)



B. Taut, Padiglione dell'industria del vetro, Colonia (1914)



B. Taut, Padiglione dell'industria del vetro, Colonia (1914): la scala interna

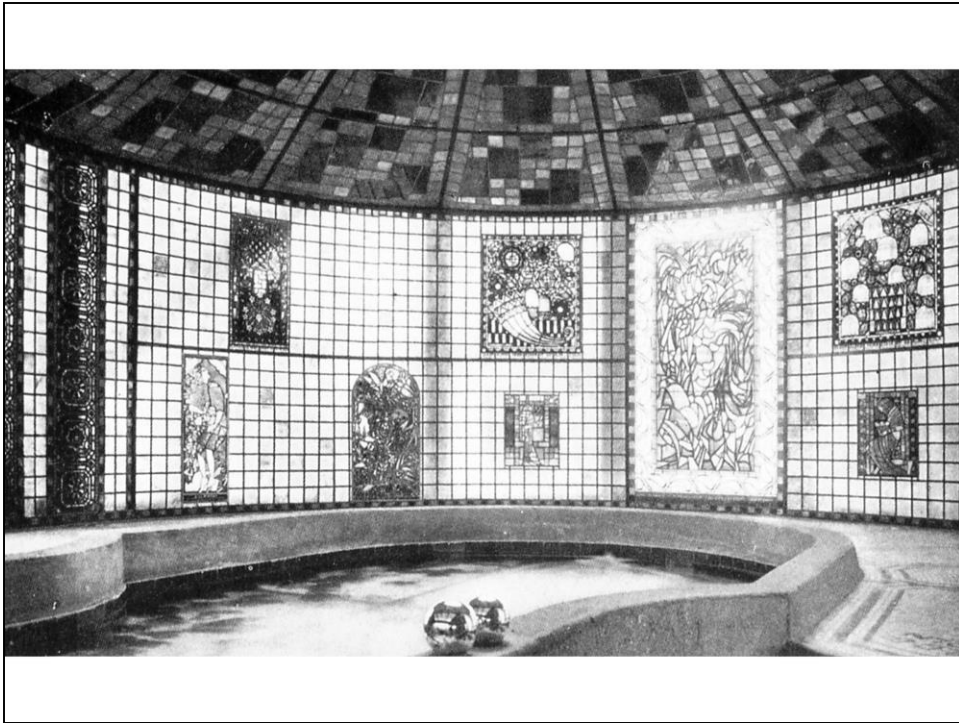


B. Taut, Padiglione dell'industria del vetro, Colonia (1914): la sala superiore

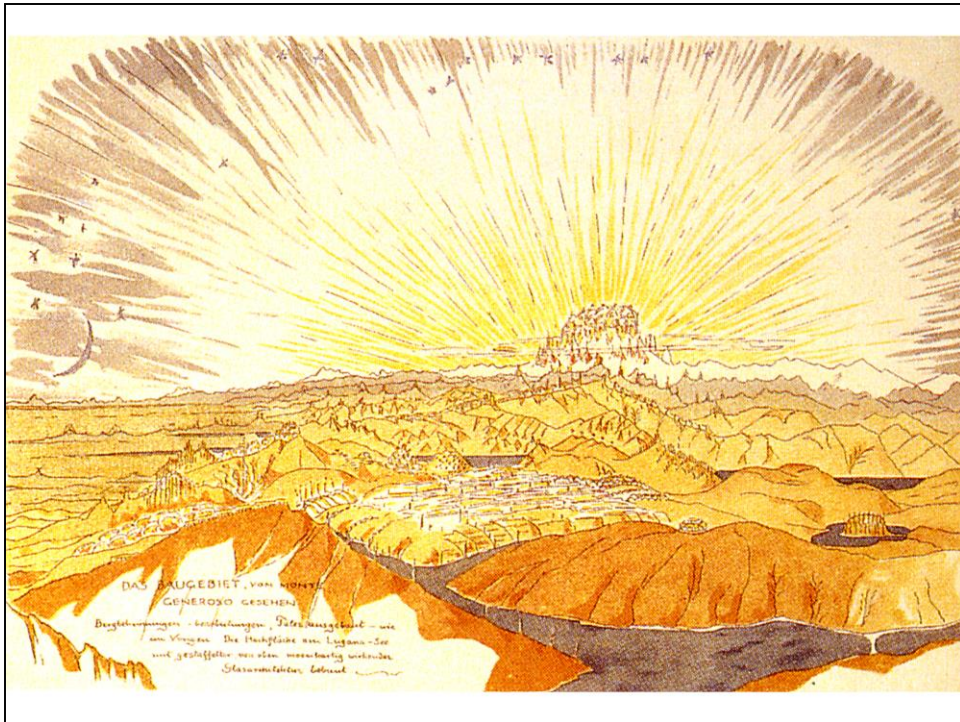


B. Taut, Padiglione dell'industria del vetro, Colonia (1914): la sala inferiore

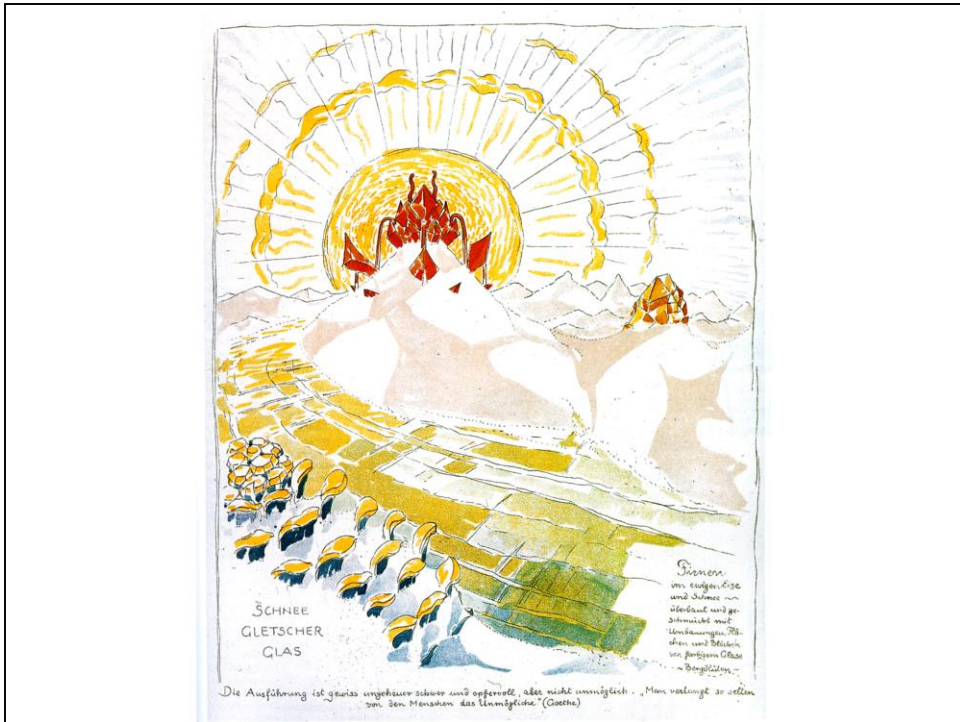




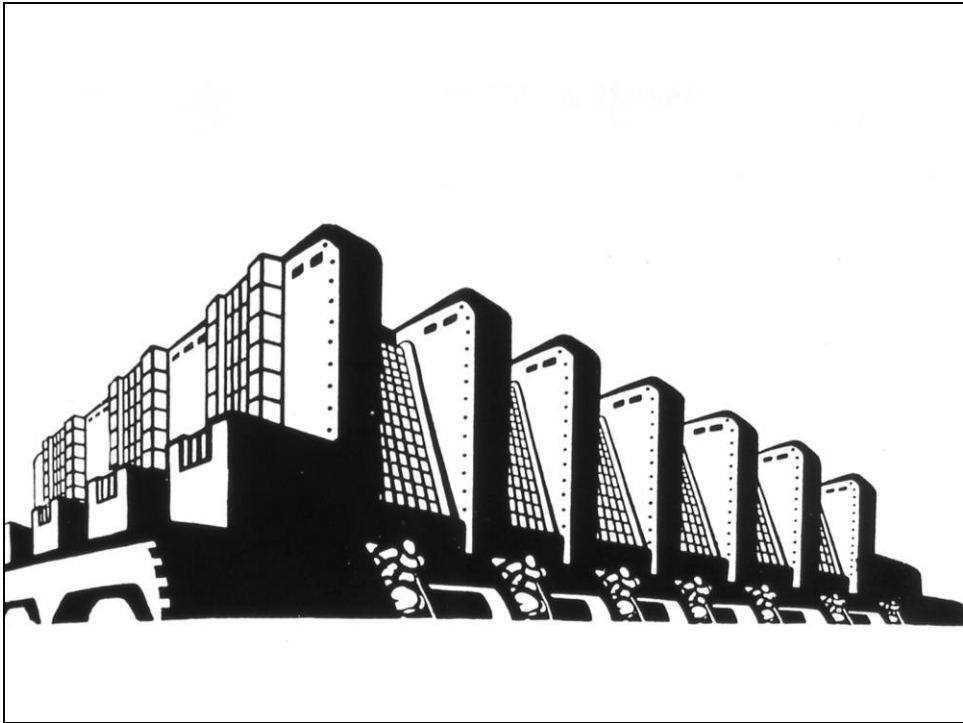
B. Taut, Padiglione dell'industria del vetro, Colonia (1914): la sala inferiore



B. Taut, disegno da *Alpine Architektur*, 1919



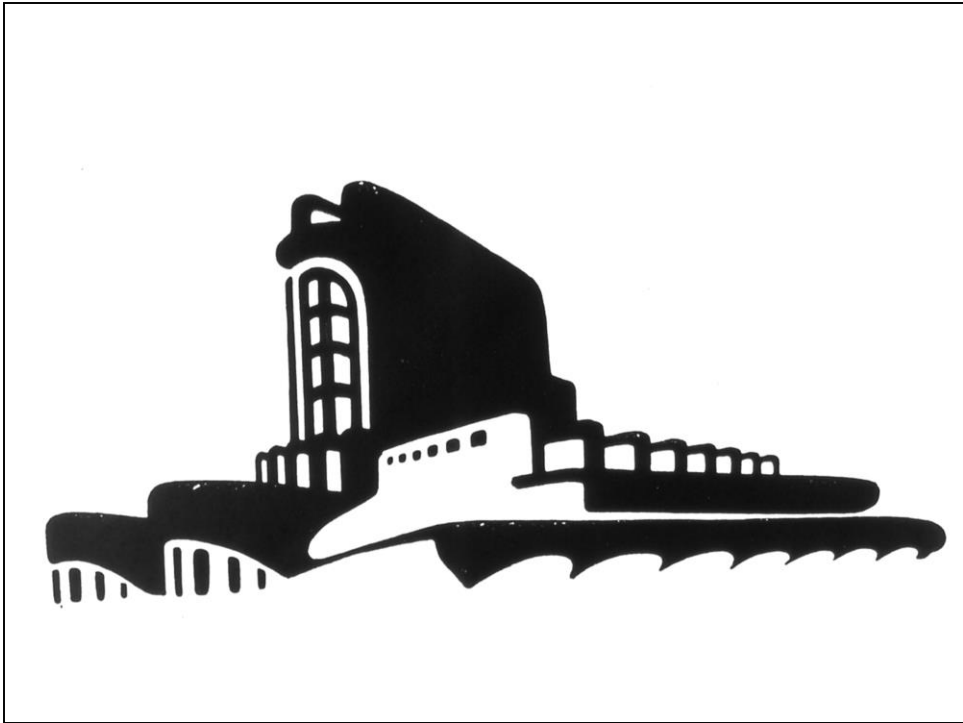
B. Taut, disegno da *Alpine Architektur*, 1919



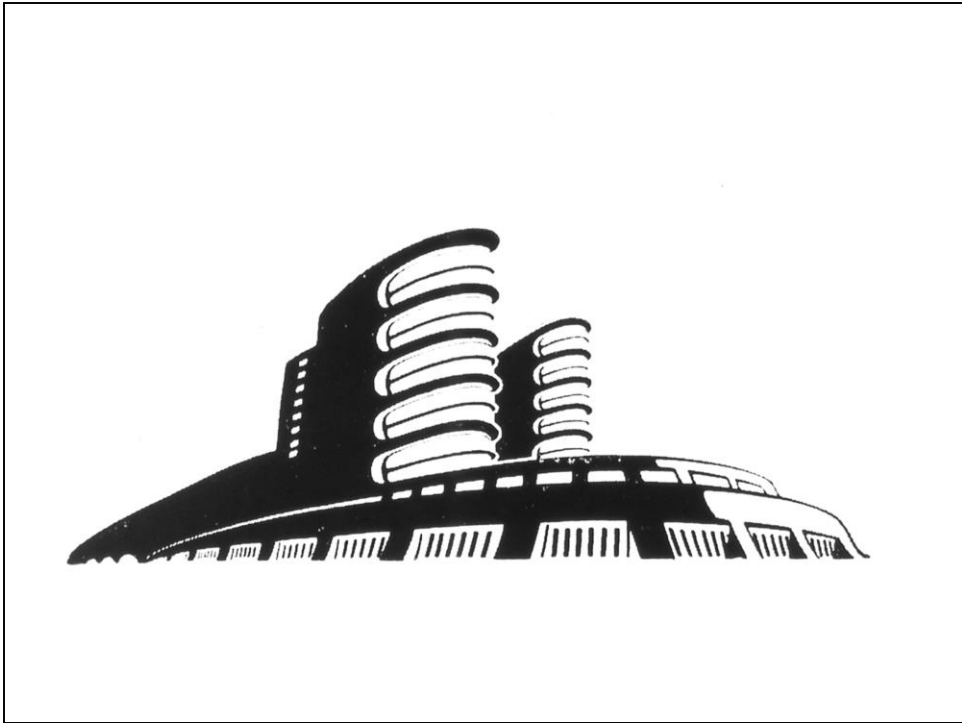
E. Mendelsohn, Schizzo di edificio industriale



E. Mendelsohn, Schizzo di edificio industriale

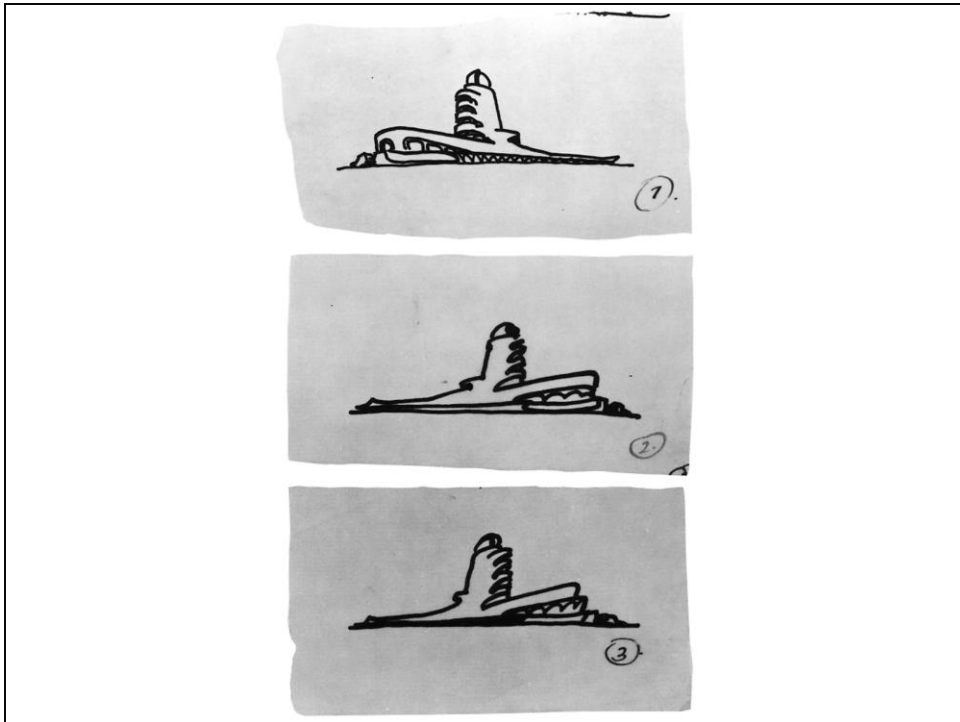


E. Mendelsohn, Schizzo di edificio



E. Mendelsohn, Schizzo di edificio

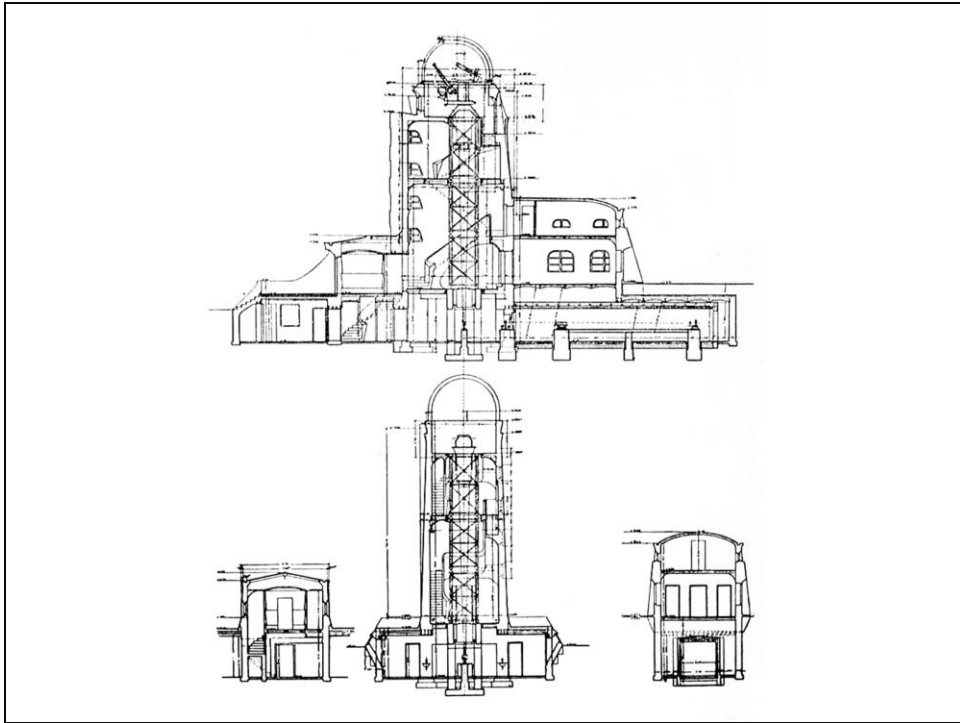




E. Mendelsohn, Einsteinturm, Potsdam (1920): schizzi



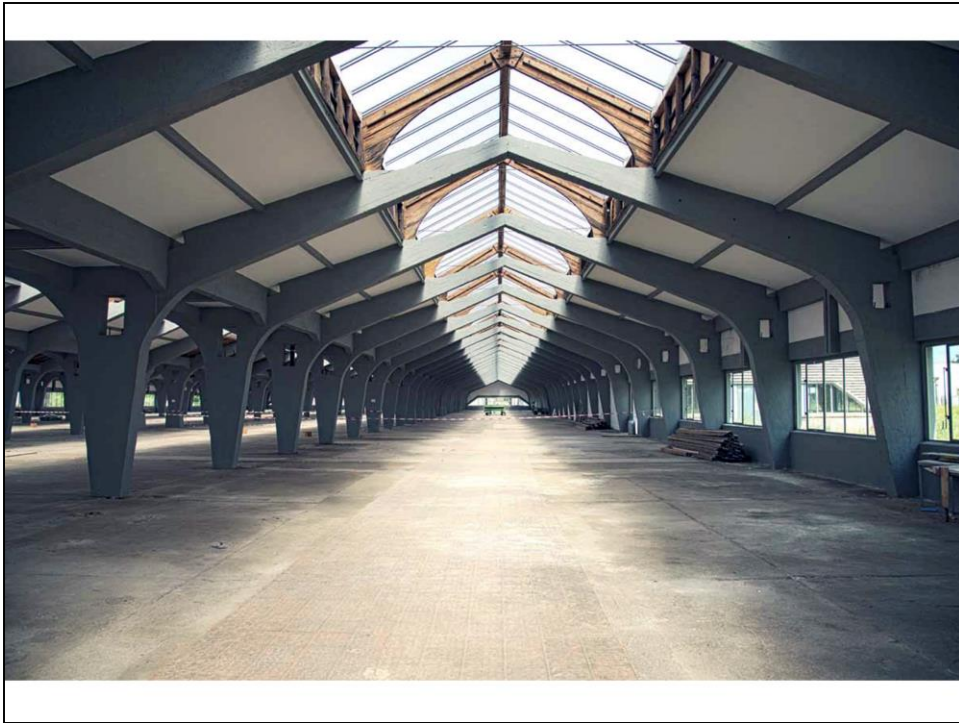
E. Mendelsohn, Einsteinturm, Potsdam (1920)



E. Mendelsohn, Einsteinturm, Potsdam (1920): sezioni



E. Mendelsohn, Fabbrica di cappelli Friedrich Steinberg, Herrmann & Co., Luckenwalde (1921-23)



E. Mendelsohn, Fabbrica di cappelli Friedrich Steinberg, Hermann & Co., Luckenwalde (1921-23)



E. Mendelsohn, Fabbrica di cappelli Friedrich Steinberg, Herrmann & Co., Luckenwalde (1921-23)



E. Mendelsohn, Grandi Magazzini Schocken, Stoccarda (1926)





E. Mendelsohn, Grandi Magazzini Schocken, Chemnitz (1926-28)