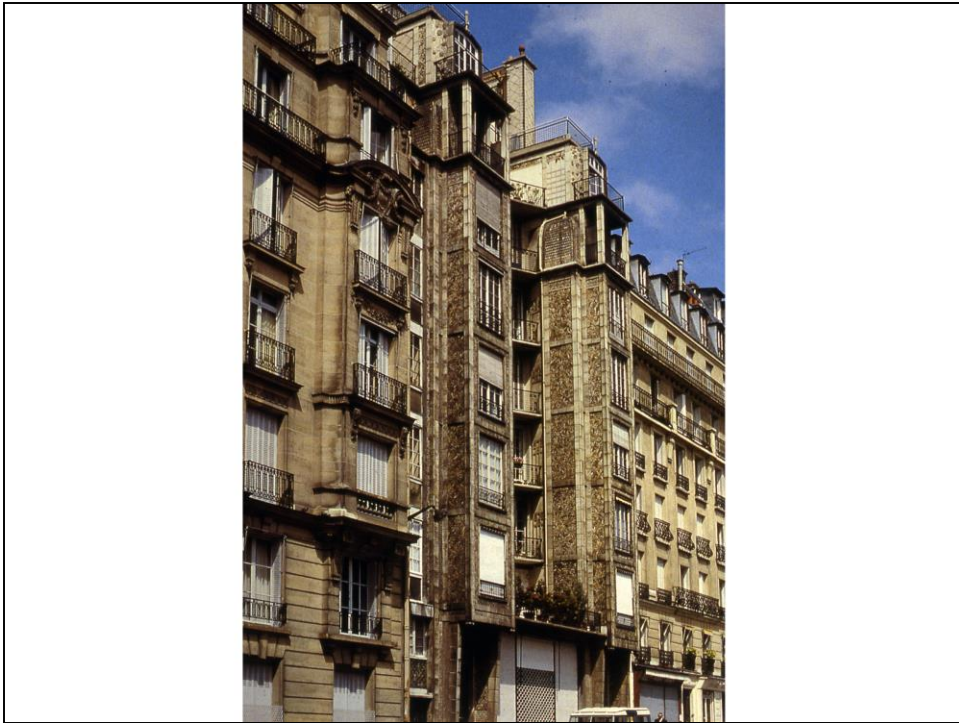
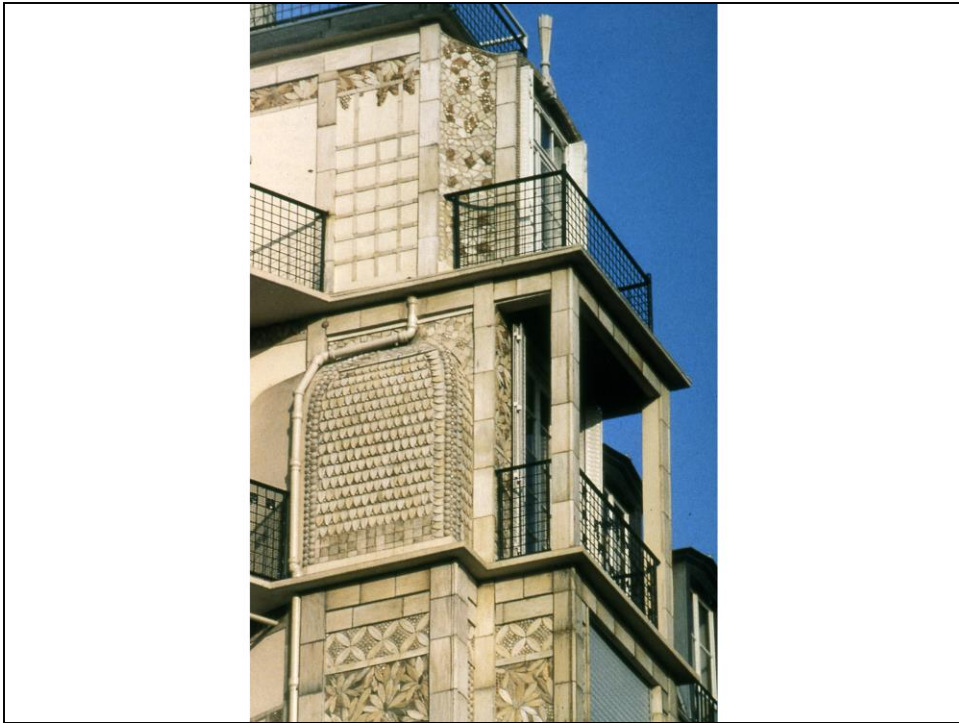




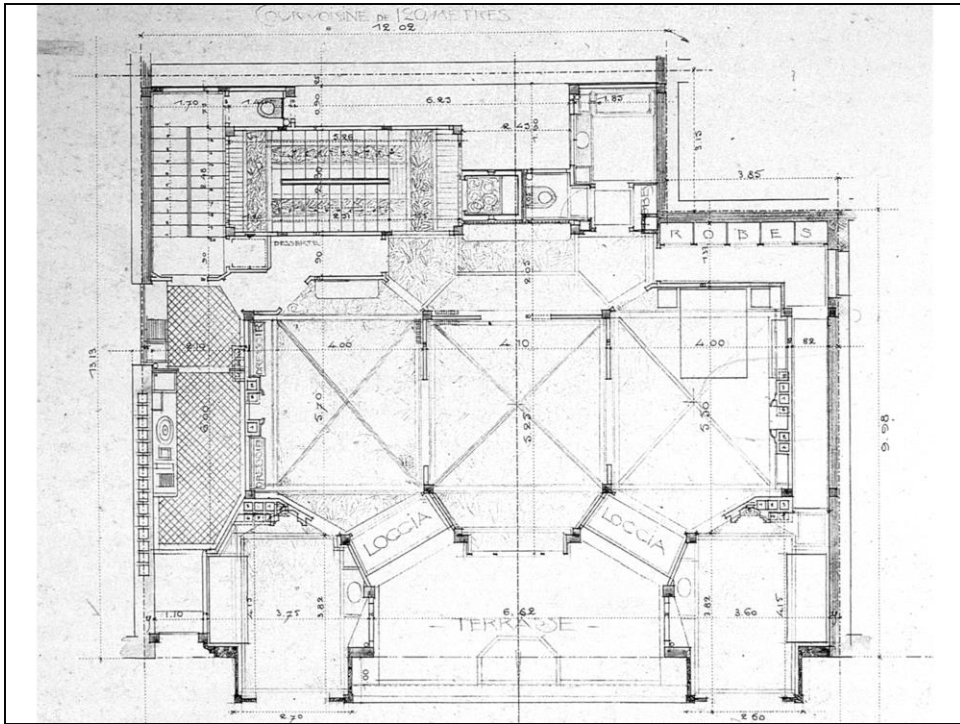
A. Perret, Immeuble de rapport in rue Franklin, Parigi (1903-04)



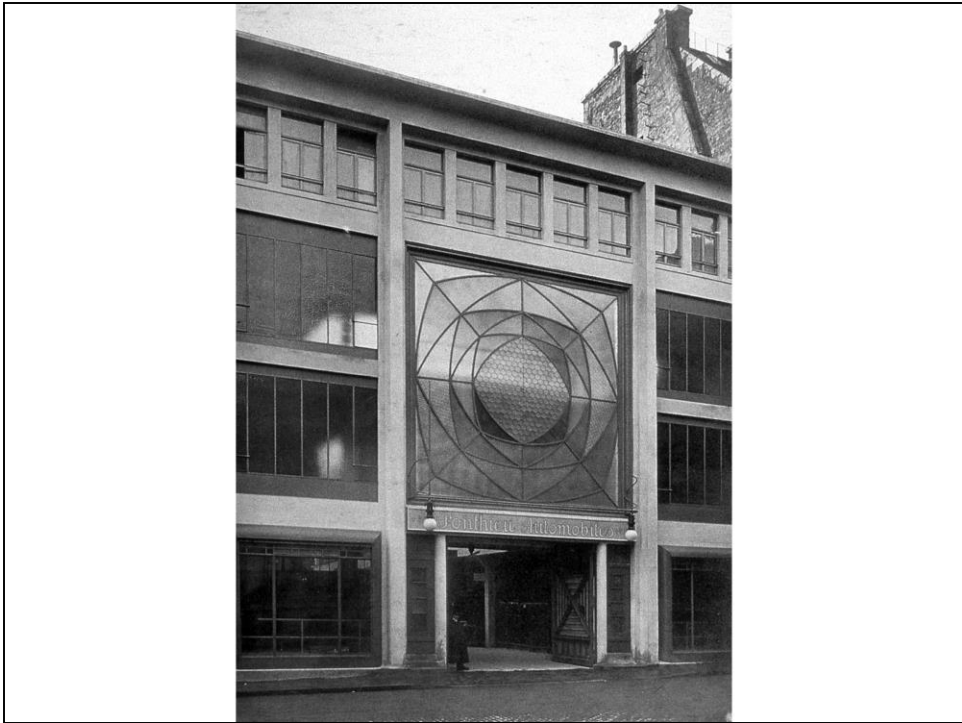
A. Perret, Immeuble de rapport in rue Franklin, Parigi (1903-04)



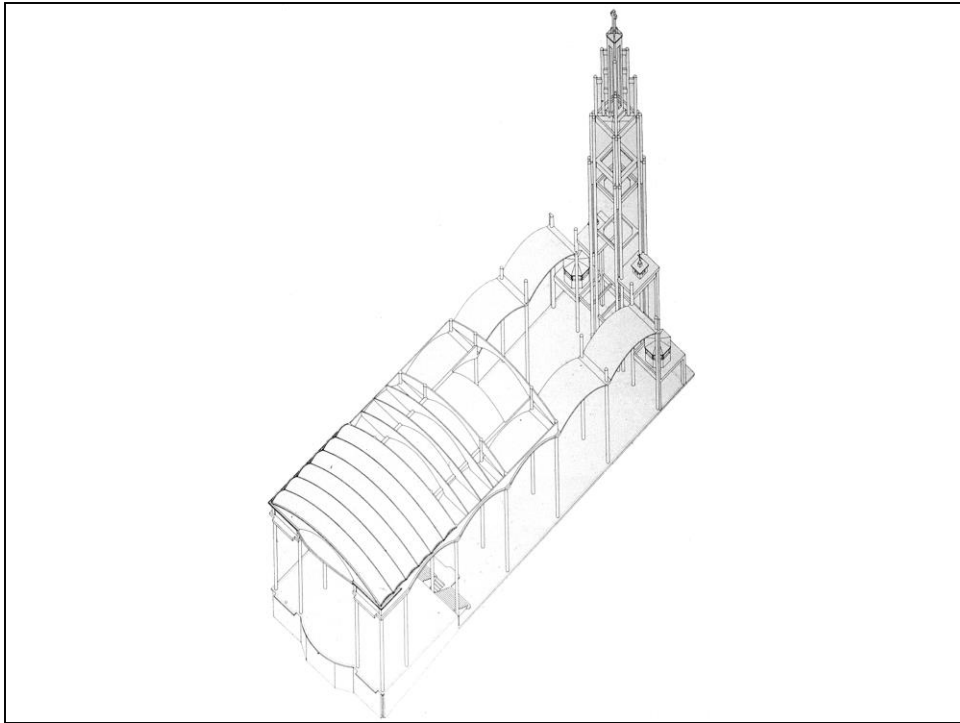
A. Perret, Immeuble de rapport in rue Franklin, Parigi (1903-04): dettaglio della facciata



A. Perret, Immeuble de rapport in rue Franklin, Parigi (1903-04): pianta



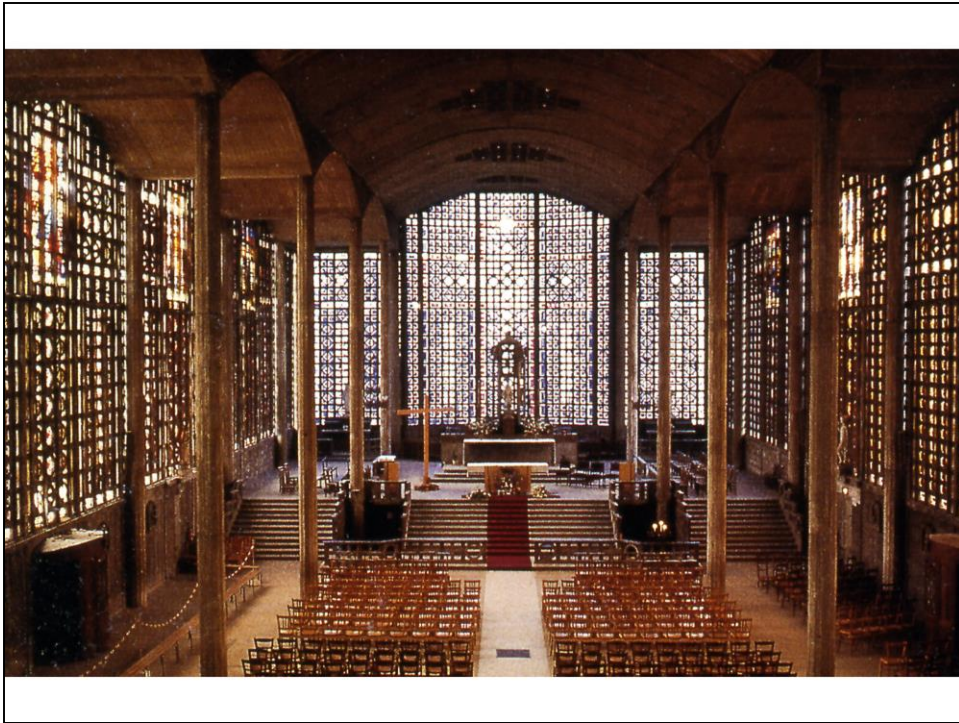
A. Perret, Garage in rue Ponthieu, Parigi (1906-07)



A. Perret, Notre-Dame de Consolation, Le Raincy (1922-23): assometria della struttura



A. Perret, Notre-Dame de Consolation, Le Raincy (1922-23)



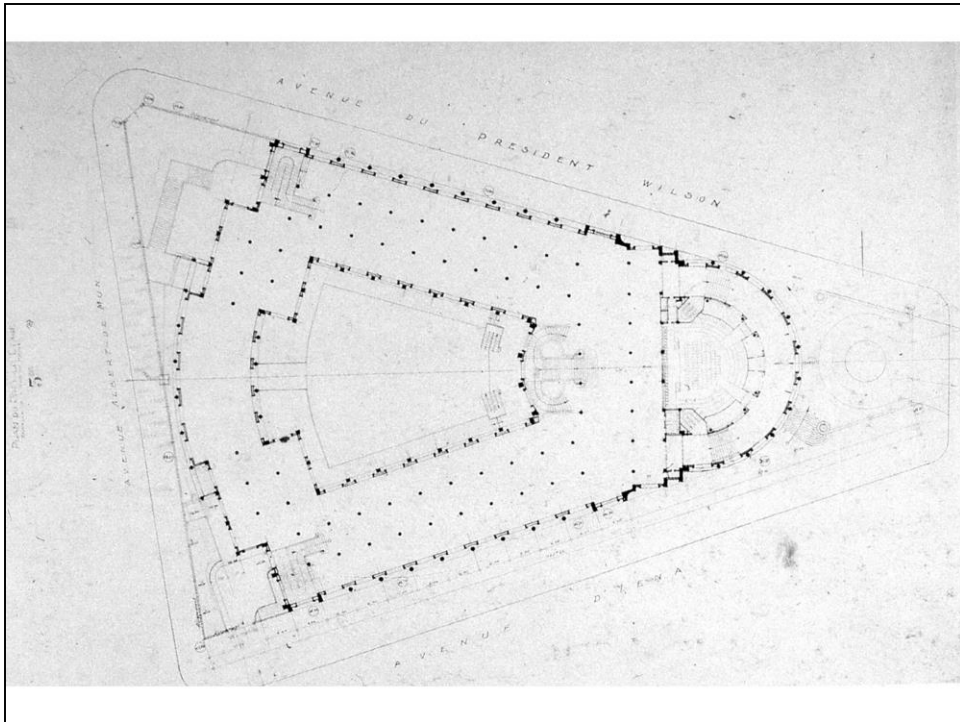
A. Perret, Notre-Dame de Consolation, Le Raincy (1922-23): l'interno



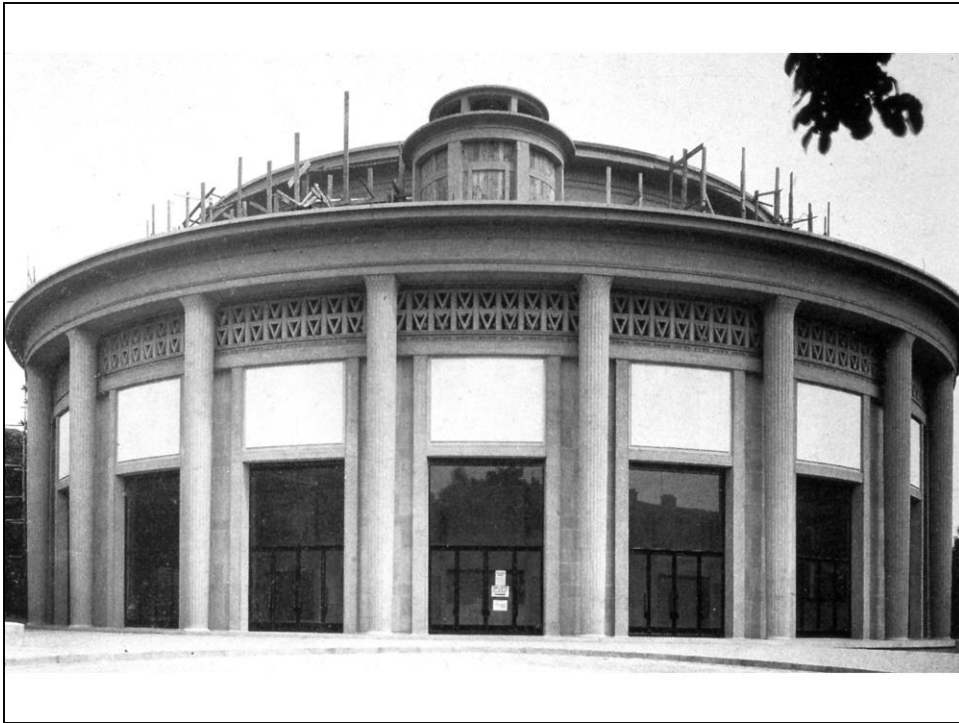
A. Perret, Padiglione La Samaritaine all'Exposition Internationale des Arts Décoratifs et Industriels Modernes di Parigi del 1925



A. Perret, Musée des Travaux Publics, Parigi (1936-46)



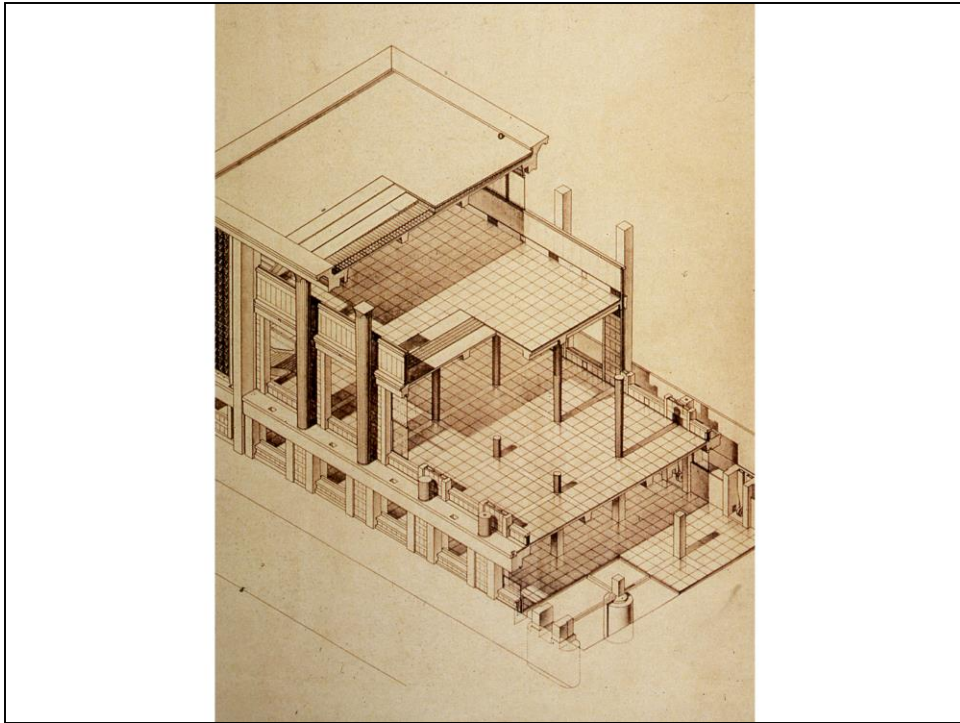
A. Perret, Musée des Travaux Publics, Parigi (1936-46): pianta



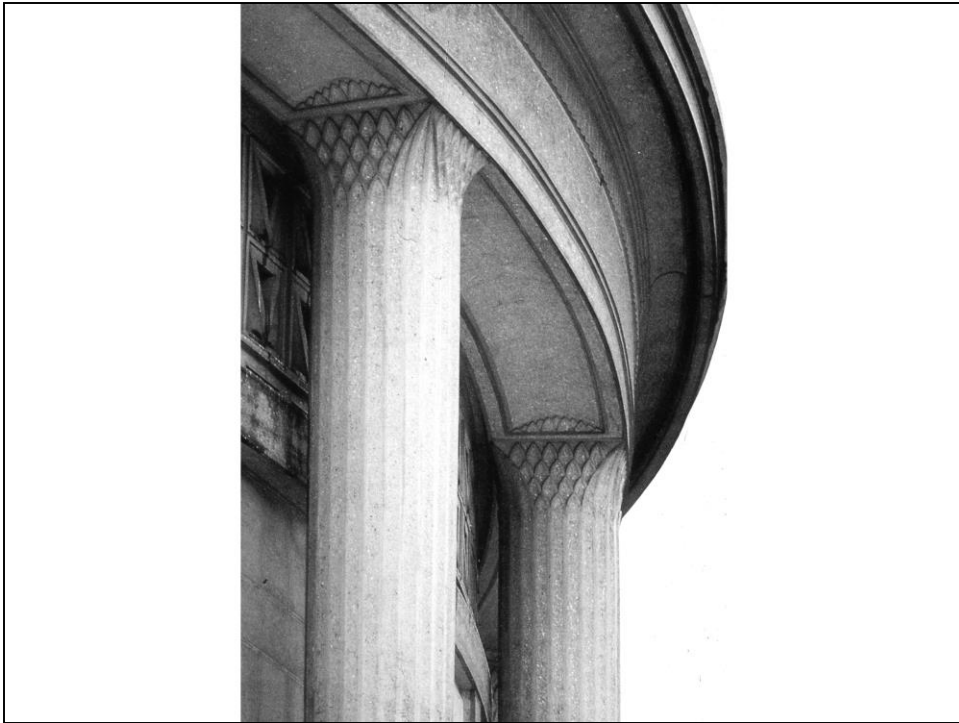
A. Perret, Musée des Travaux Publics, Parigi (1936-46): la testata



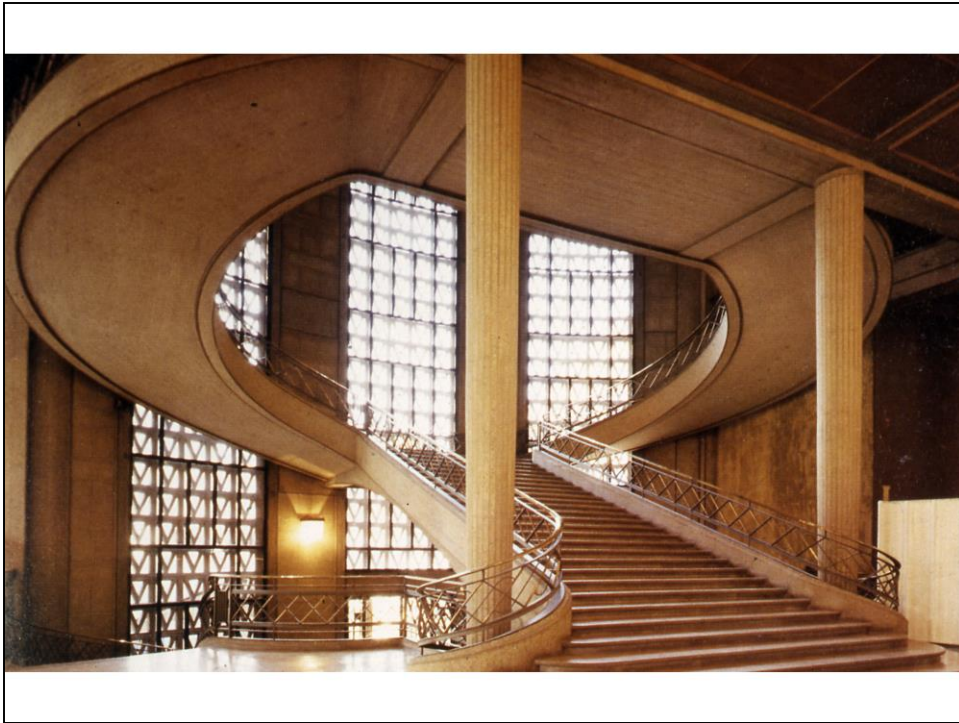
A. Perret, Musée des Travaux Publics, Parigi (1936-46): la testata in costruzione



A. Perret, Musée des Travaux Publics, Parigi (1936-46): spaccato
assonometrico



A. Perret, Musée des Travaux Publics, Parigi (1936-46): dettaglio dell'ordine gigante



A. Perret, Musée des Travaux Publics, Parigi (1936-46): la scala principale