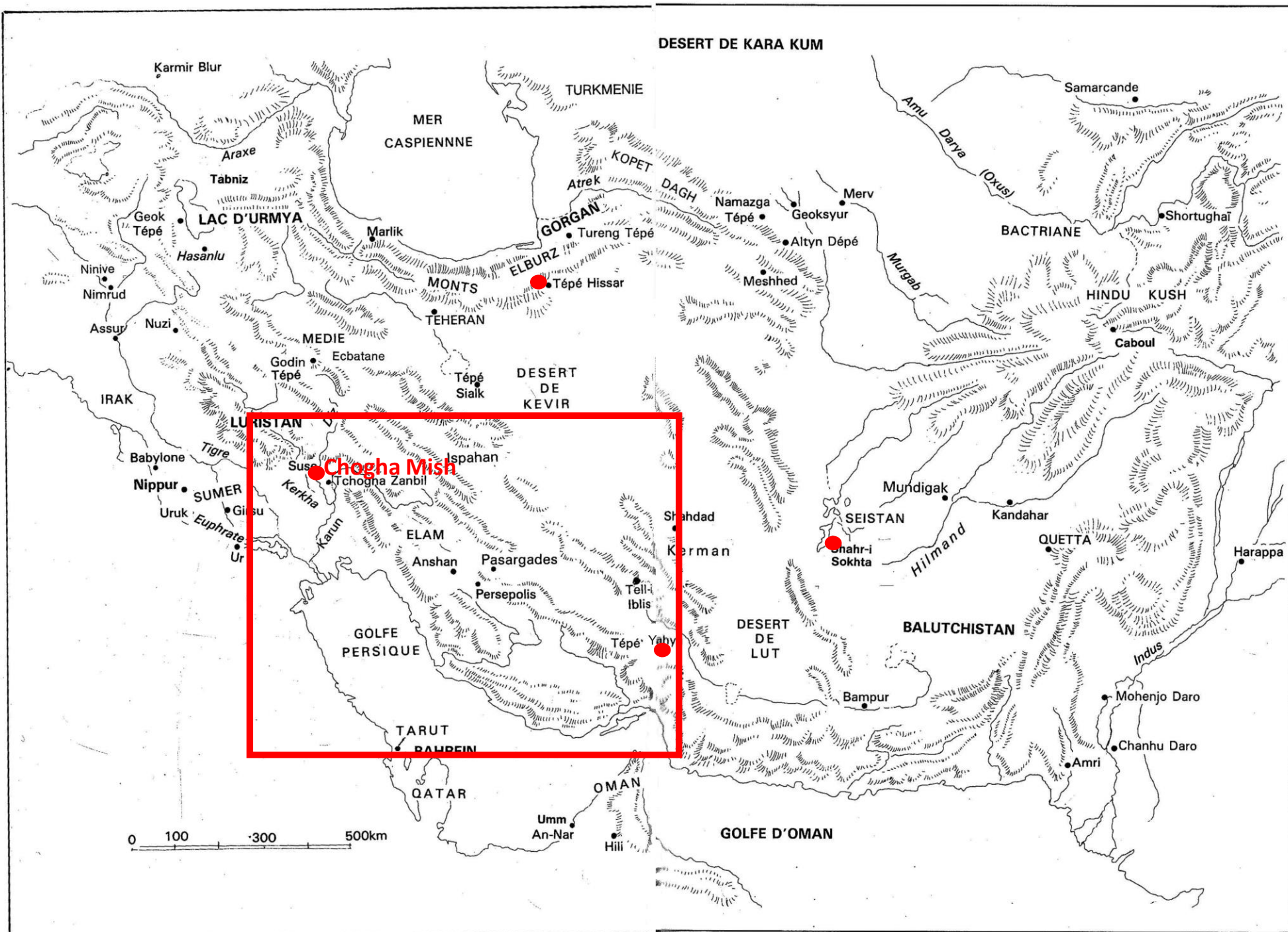


Il periodo Medio-Elamita

Medio elamita I, 1600/1500-1300/1200



- Transizione dai sukkalmah al period medio elamita non è chiara.
- Gruppo di Sovrani chiamati convenzionalmente Kidinuidi (Medio elamita I, c.1450–1400 BCE), sembra connessa con i sukkalmah anche se hanno il titolo di “re di Susa” (su mattoni) o re di Susa e Anshan” (nei sigilli e tavolette di Tepti-Ahar).
- Iscrizioni in accadico
- **Il sovrano Tepti-Ahar** è noto da un’iscrizione su mattone da Susa e dal centro regale di Haft Tappeh

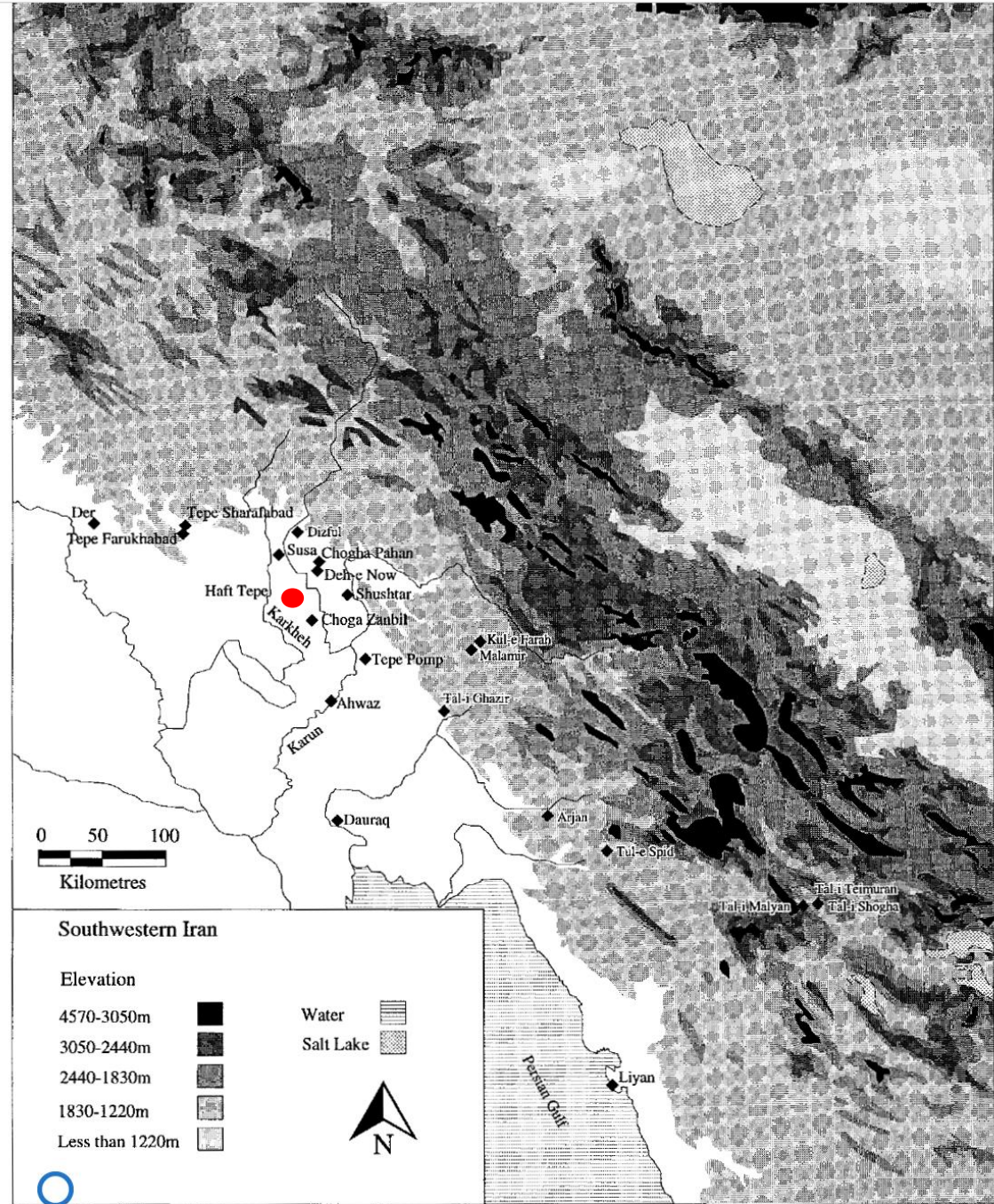
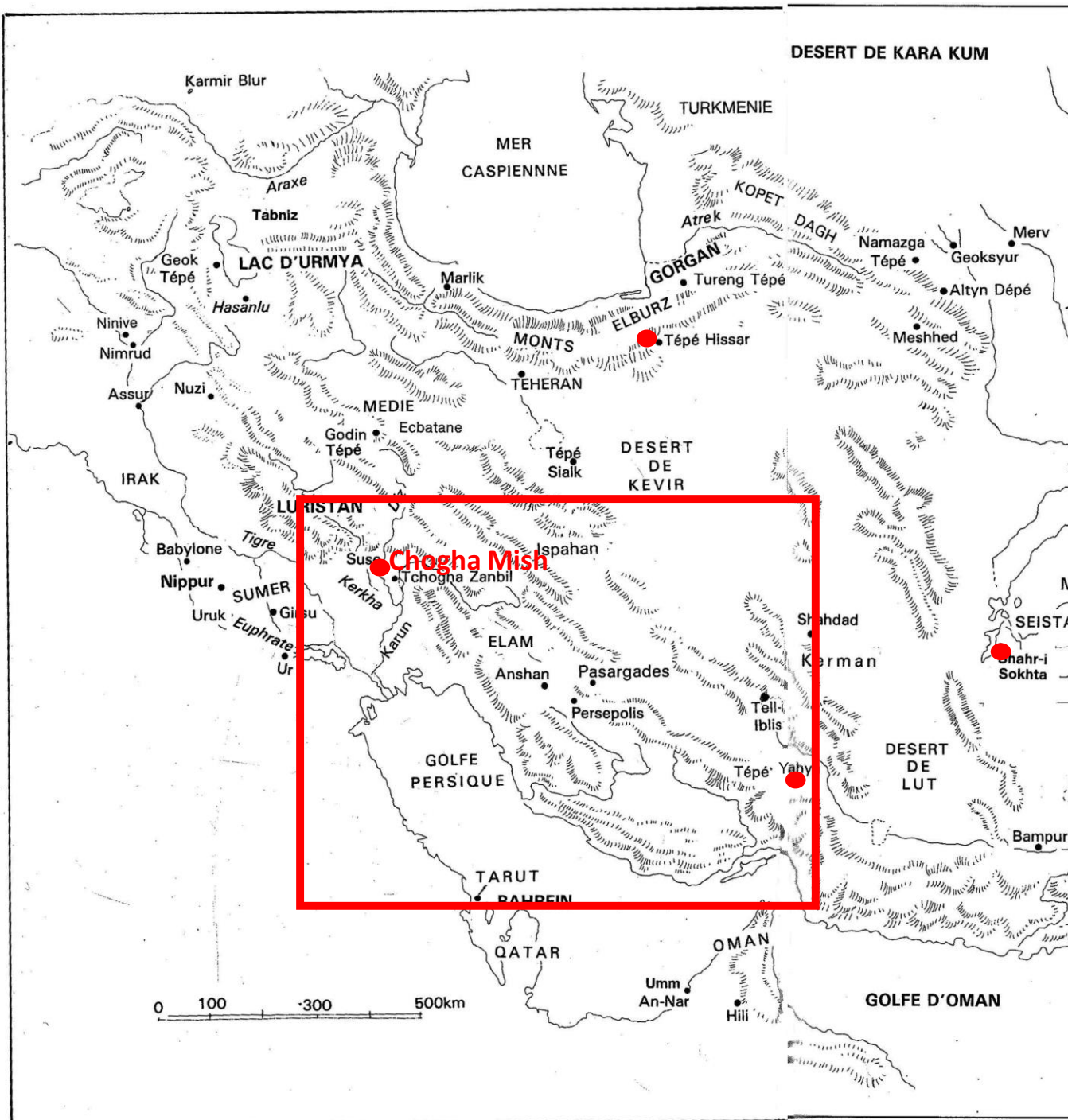
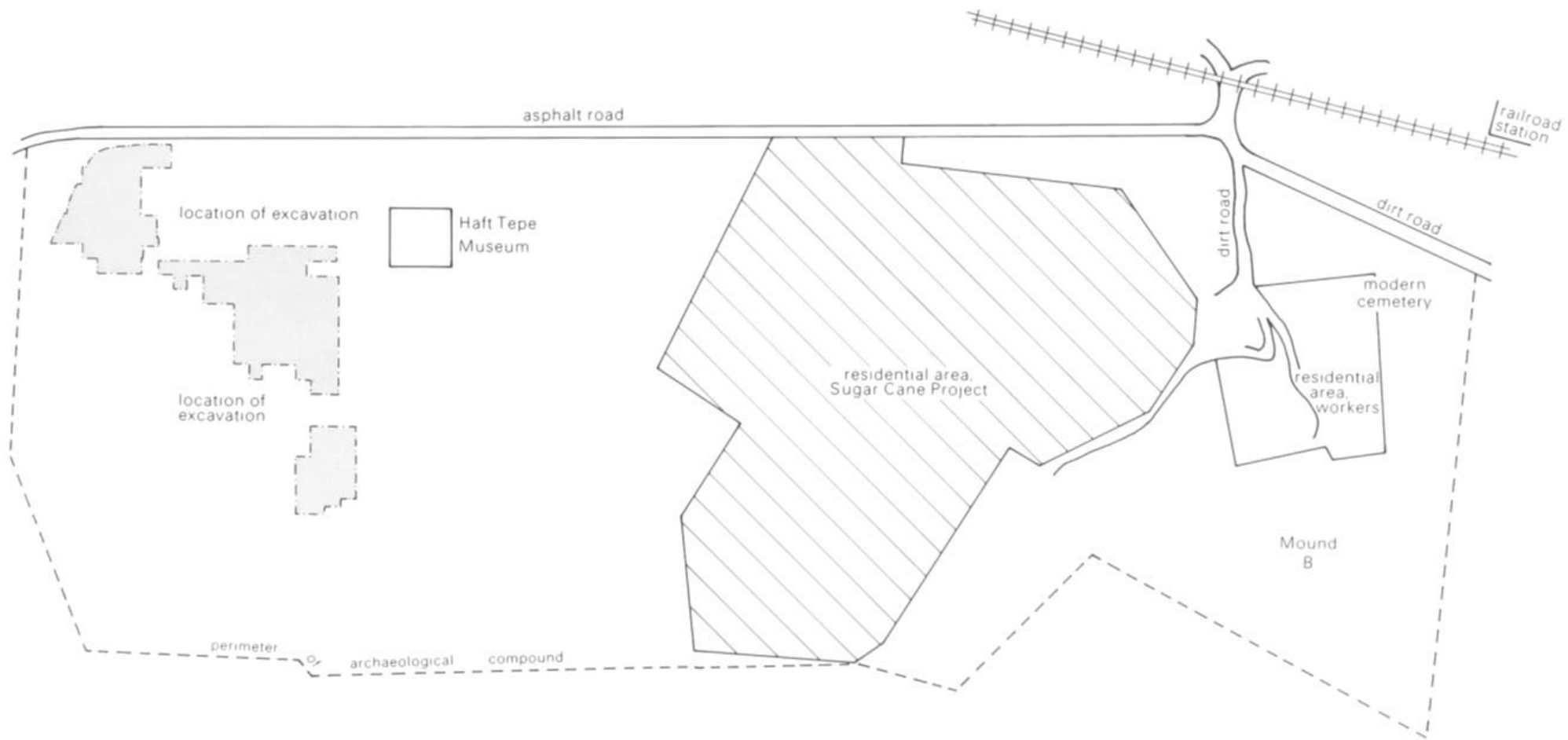


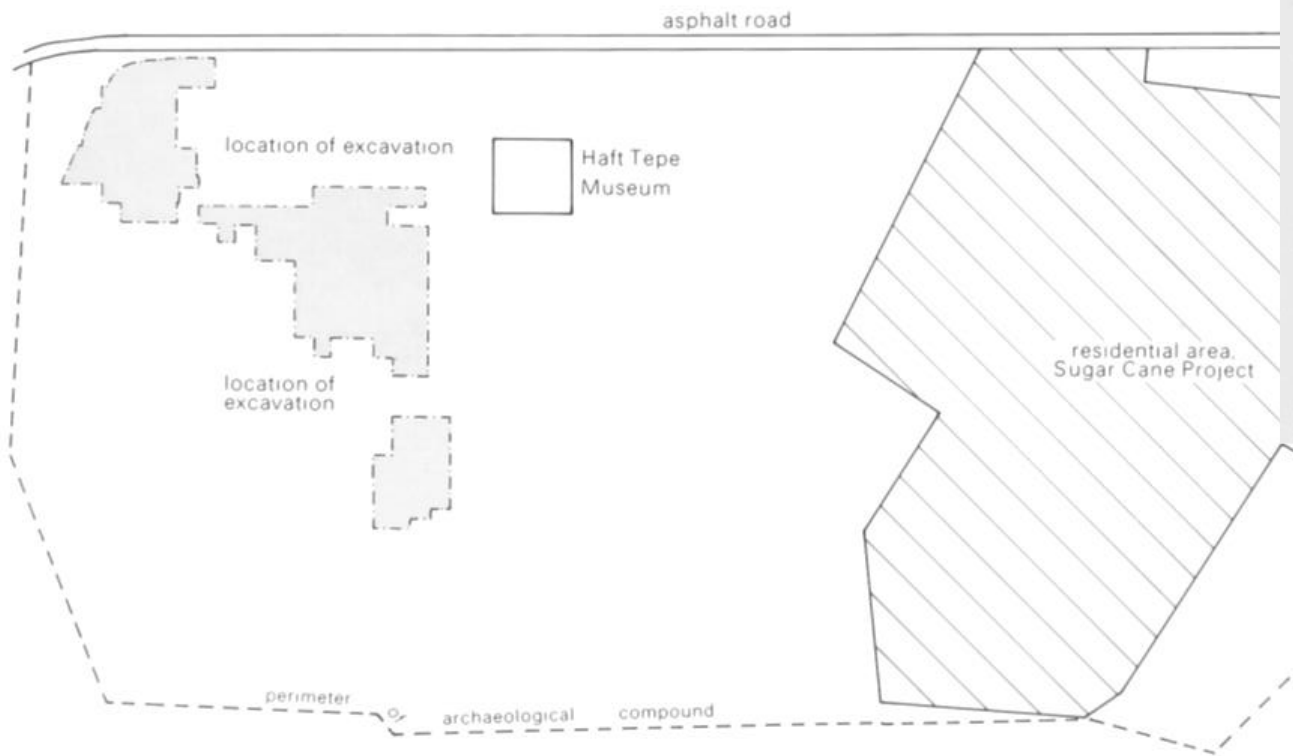
Figure 7.1 Map of southwestern Iran showing the principal sites mentioned in Chapter 7.



HAFTEPE
SITE LOCALITY

0 50 100 m





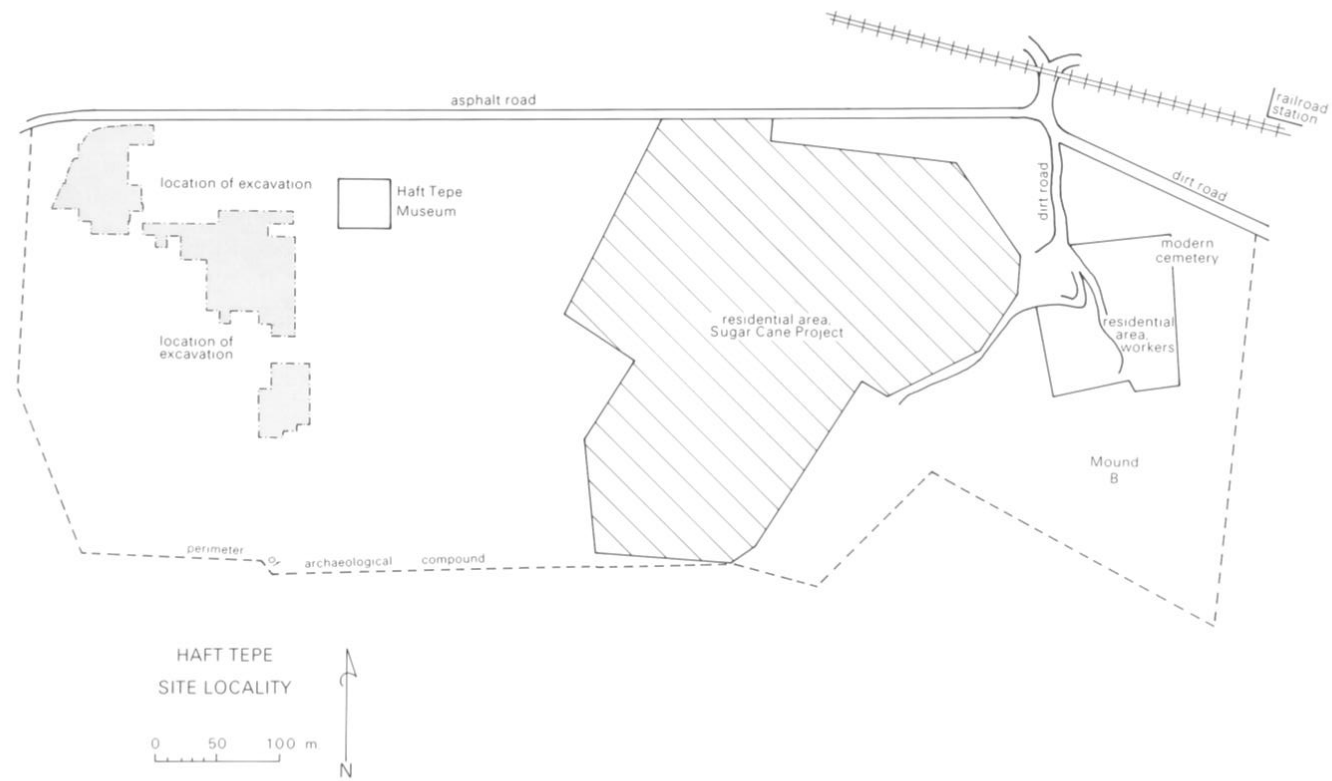
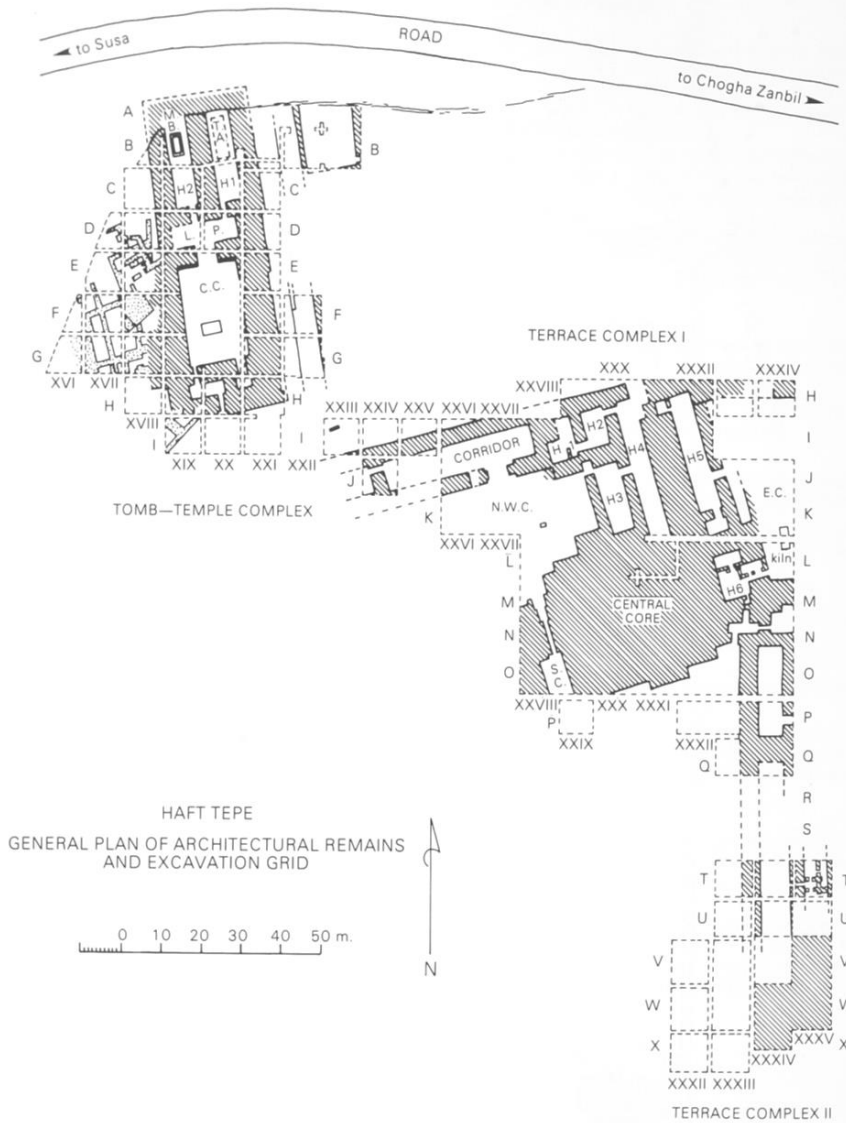
HAFTEPTE
SITE LOCALITY

0 50 100 m



Haft Tepe archaeological remains.





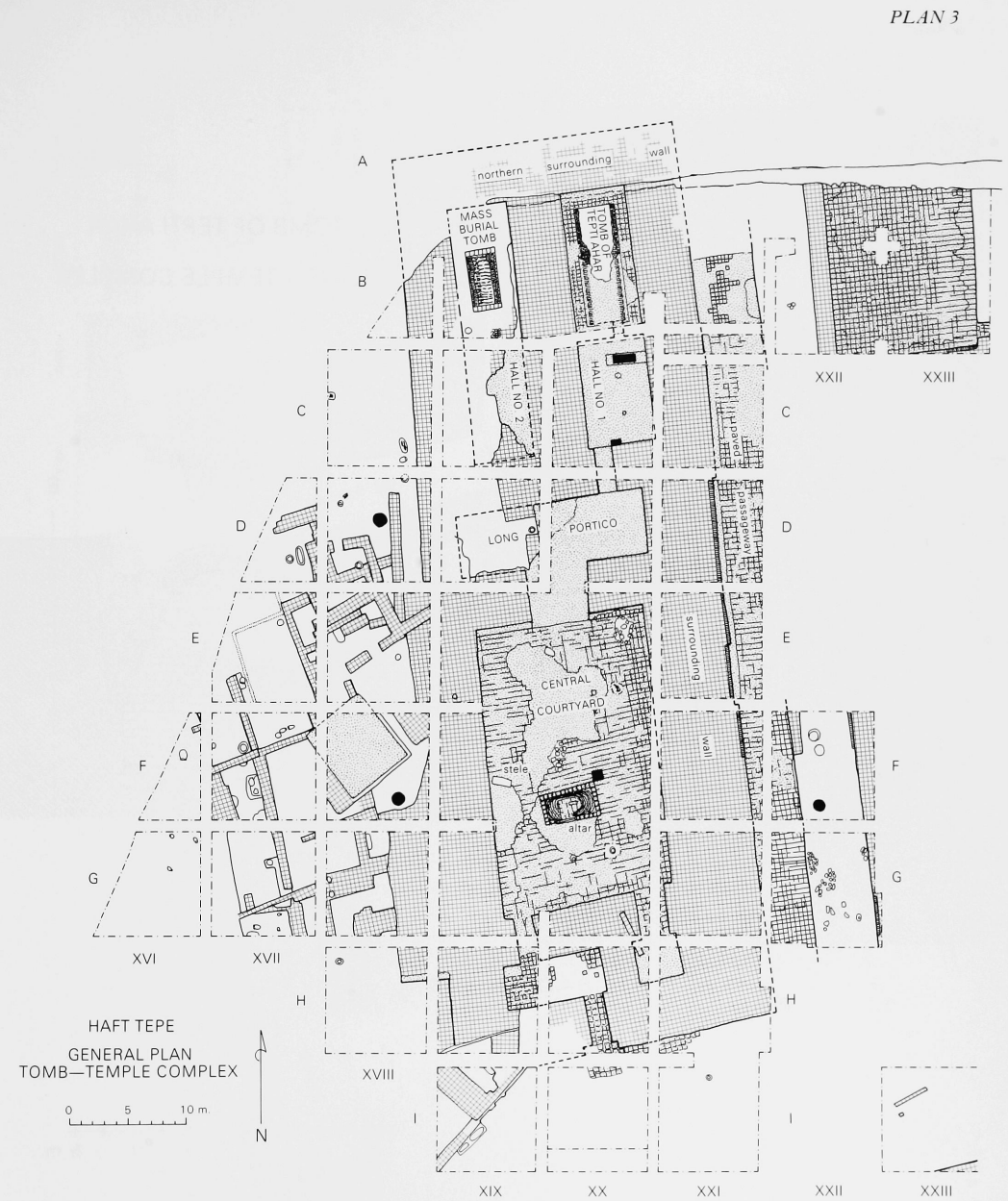
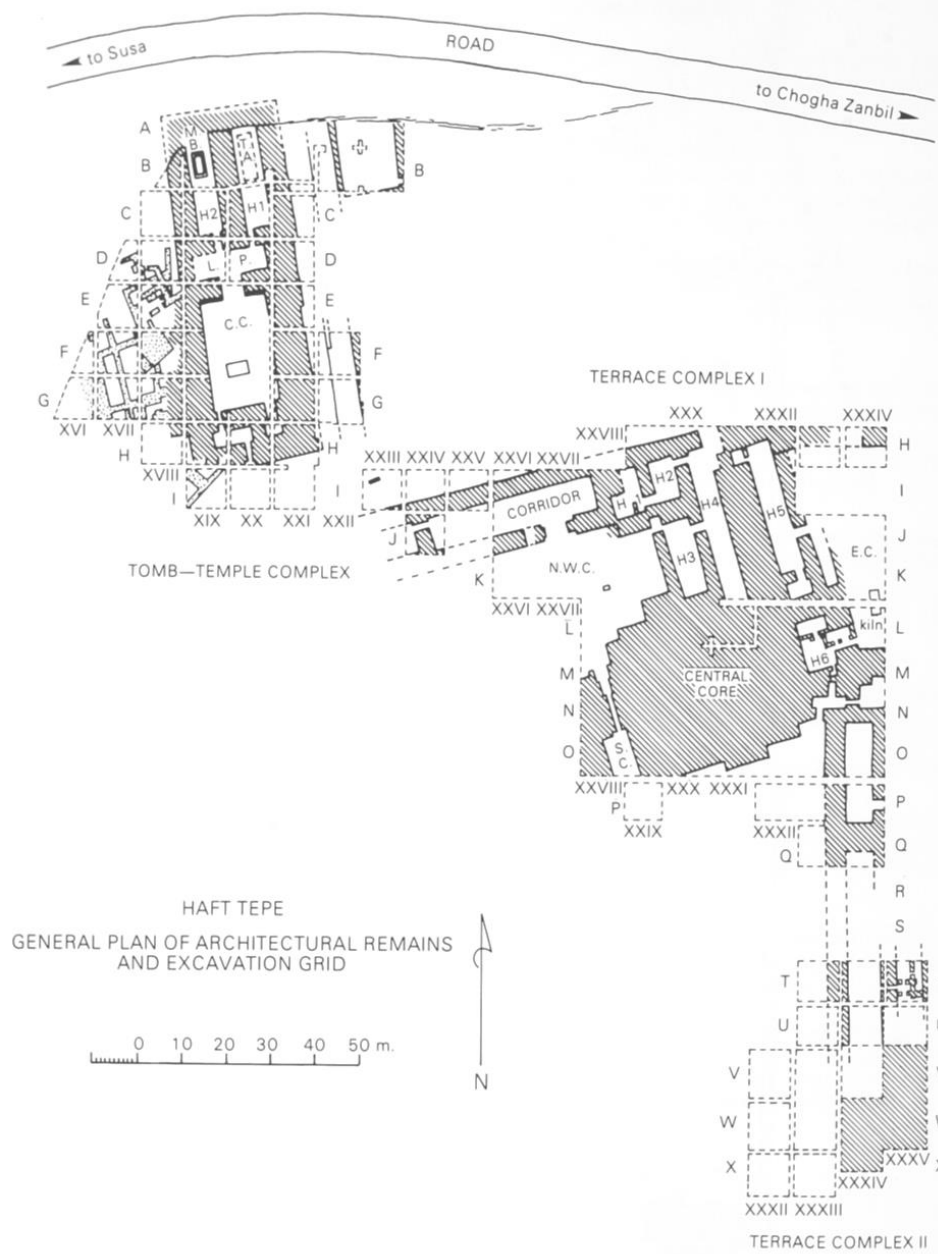
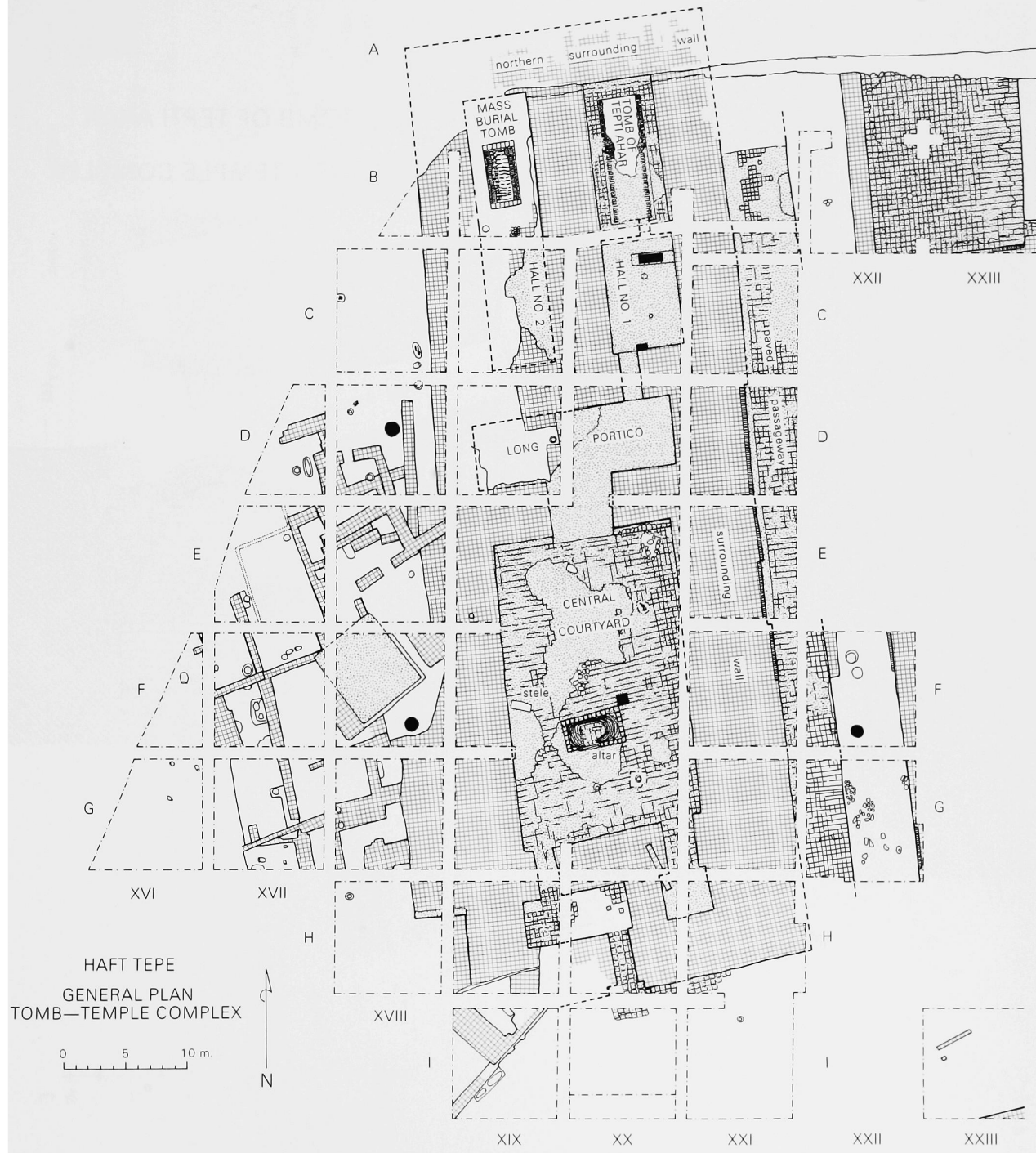


PLATE 52



Stele 1, di Tepti-ahar

- 1–19 obligation of the six guards of the house – Kuk-Allatu, Kuk-eshru, Iribamma,
- Agunannu, Attameten and Irib-Adad – to sacrifice specified amounts of flour, beer and sheep per month or year as *terru shetru* offerings, and at the festivals of Abu and Tashritu
- 20–27 summary of the above plus additional amounts to be sacrificed before the chariot of Inshushinak and the *saparru*-wagon of Tepti-ahar
- 28–31 summary of offerings plus sheep for the festivals of Abu, Kirawashir, Tashritu and the chariot
- 31–38 summary of funerary offerings to be made by the six guards
- 39–46 further duties of the guards, admonition against negligence
- 47–55 duties of the women of the guards



A. Central Courtyard: southeast wall, looking west in E XXI.







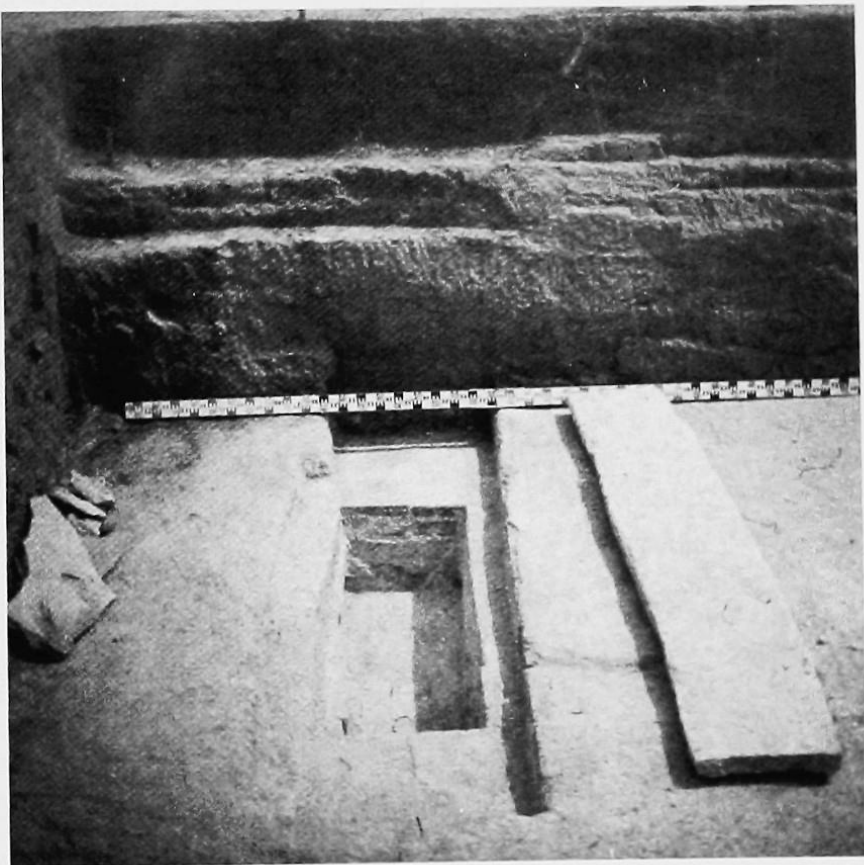
B. Central Courtyard: looking northwest, showing two stone stela fragments (left center), ruined platform (center), and brick paving in E, F, G XIX-XX.



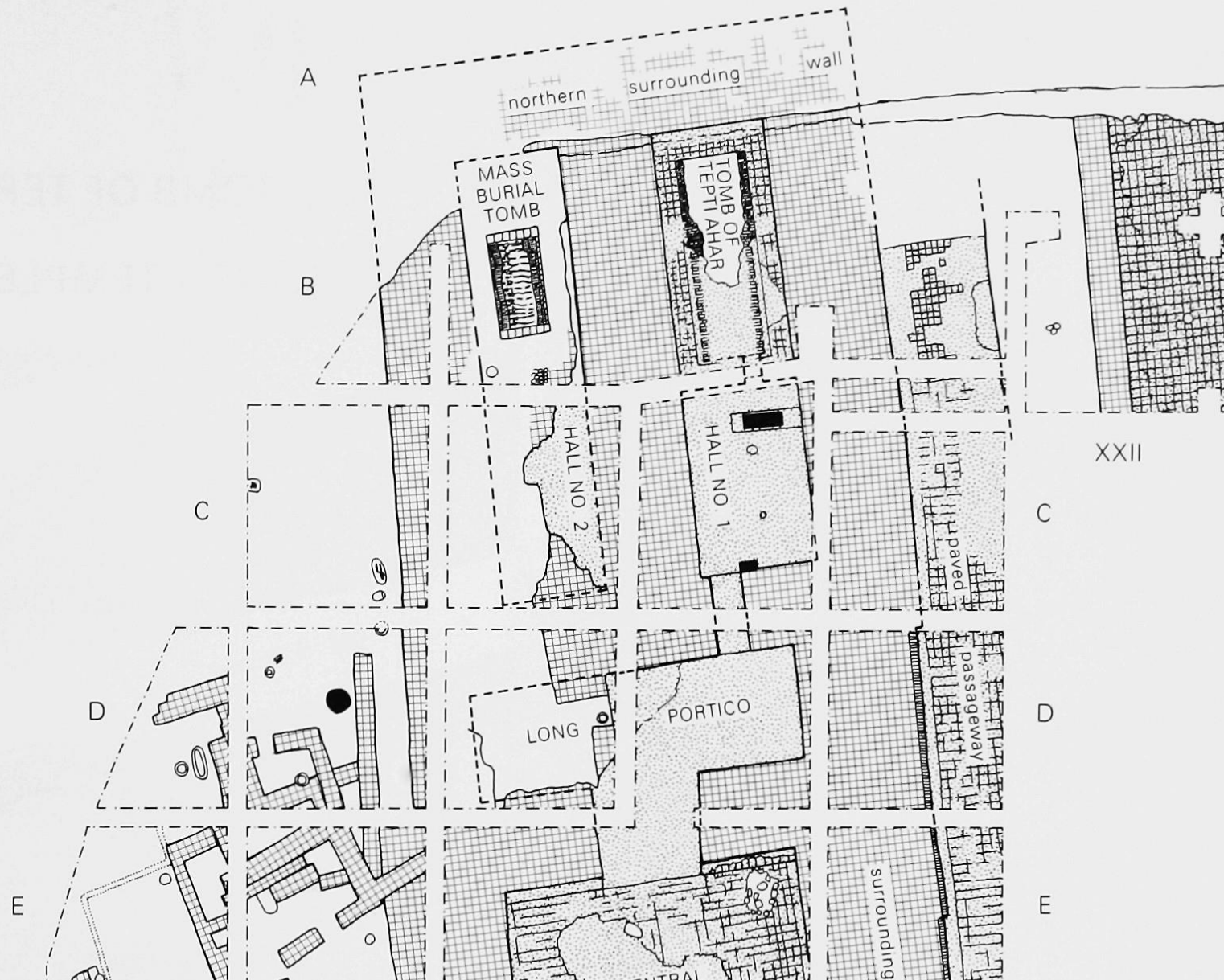


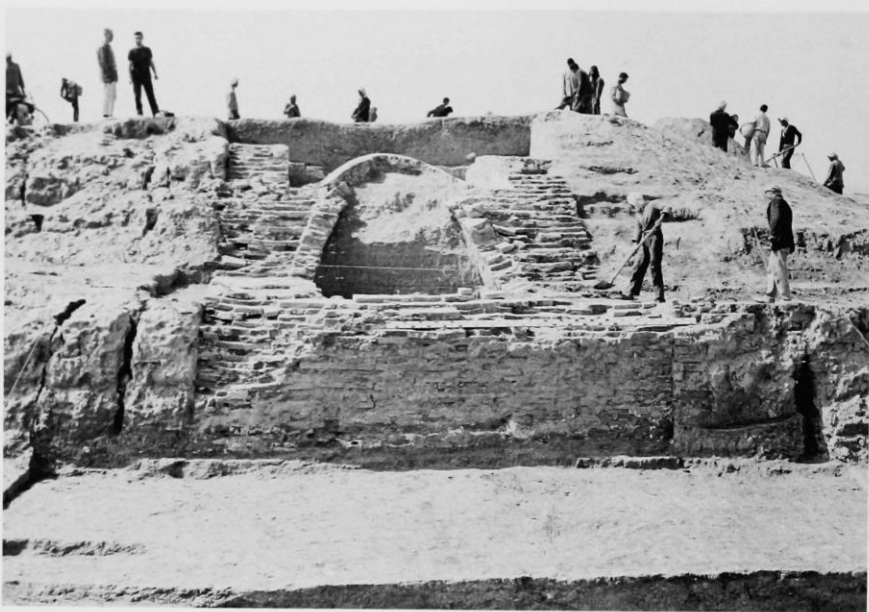
A. Central Courtyard: ruined platform (foreground), looking northwest across two stone stela fragments in F XX.





C. Temple Hall no. 1: partly opened covered passageway leading down to the Tepti Ahar tomb chamber at the north end of the hall, looking east in B, C XX.

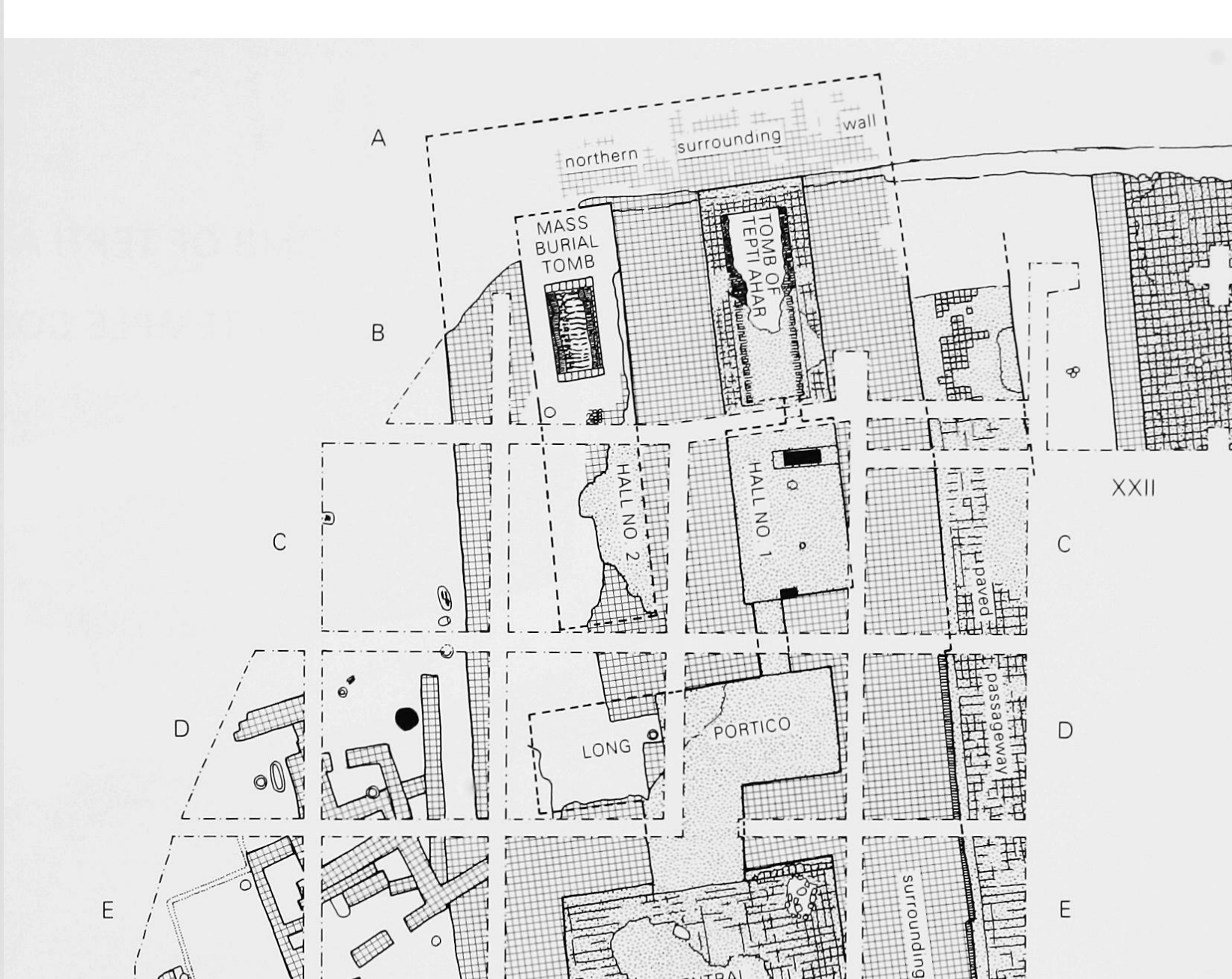


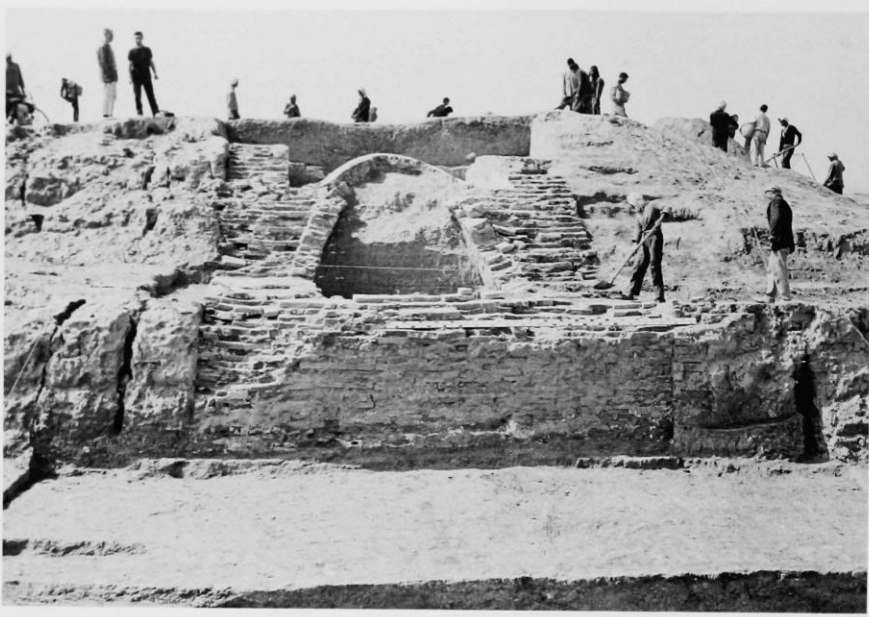


A. Vaulted Tomb of Tepti Ahar: north end showing back wall, remaining brick vault and side wall in A, B XX.

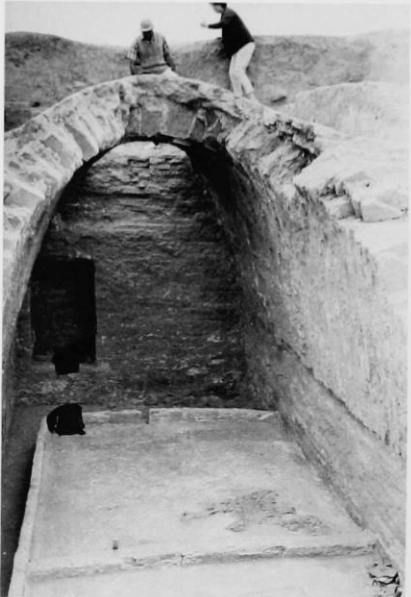


B. Vaulted Tomb of Tepti Ahar: south end of tomb chamber showing passage to Hall no. 1, remaining vault, and burial platform in B XX.



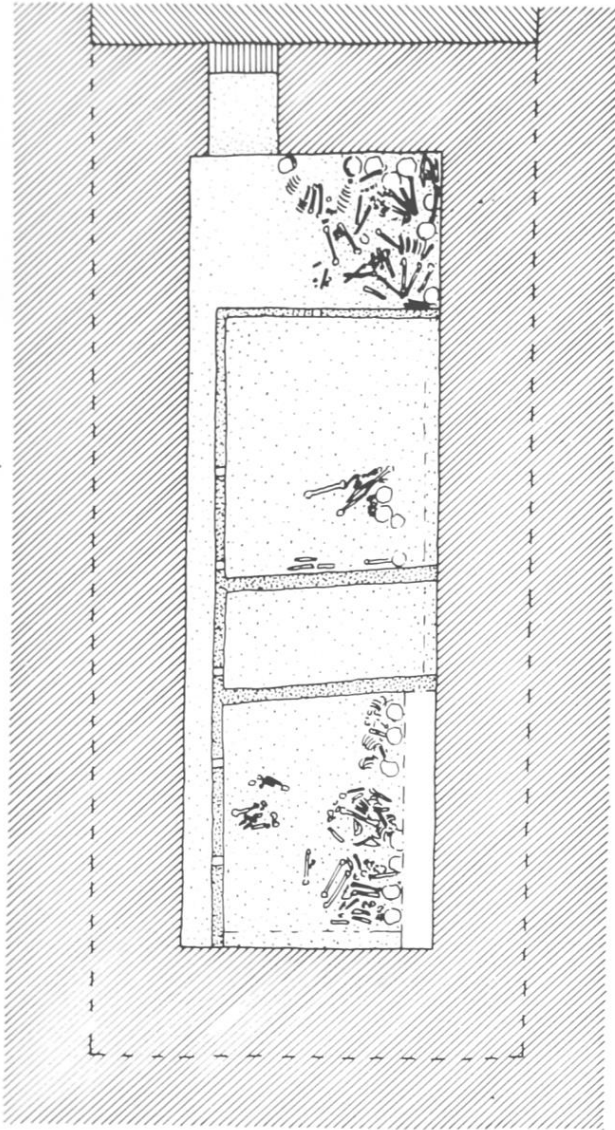


A. Vaulted Tomb of Tepti Ahar: north end showing back wall, remaining brick vault and side wall in A, B XX.



B. Vaulted Tomb of Tepti Ahar: south end of tomb chamber showing passage to Hall no. 1, remaining vault, and burial platform in B XX.

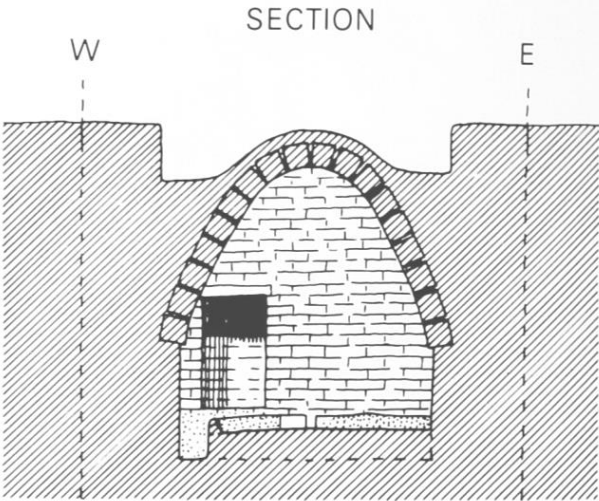
21 individui, due dei quali collocati nella piattaforma a nord e sette a sud oca



PLAN

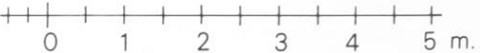


TOMB OF TEPTI AHAR
TOMB—TEMPLE COMPLEX

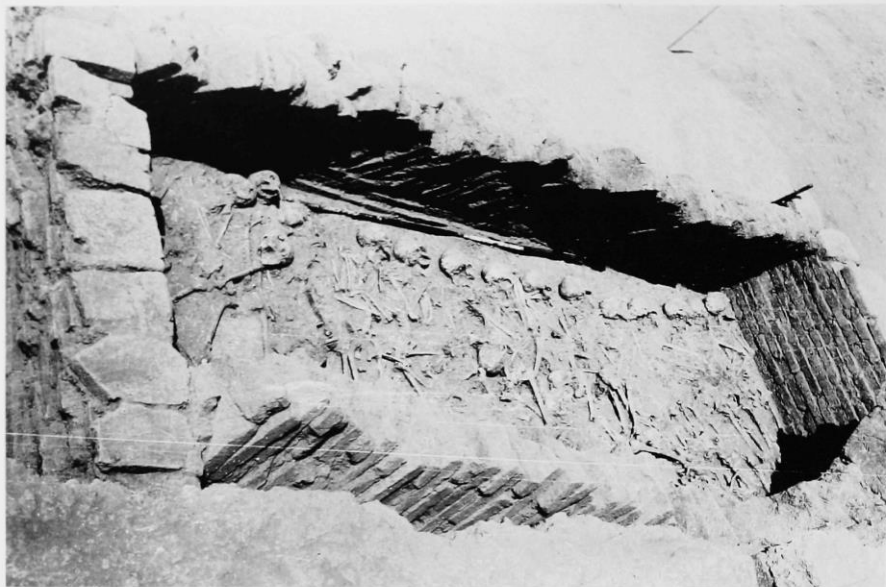


SECTION

W E



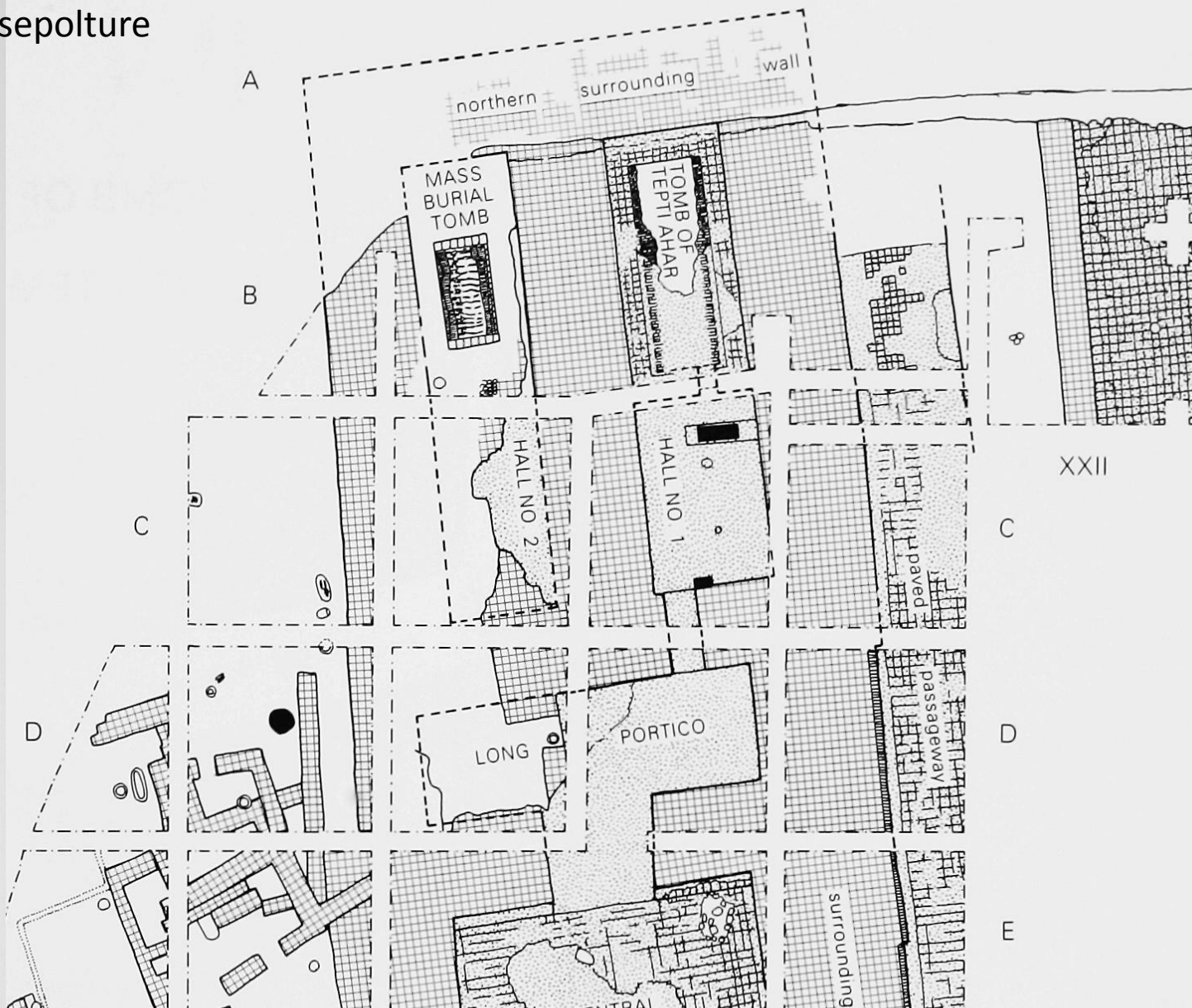
23 sepulture



A. Vaulted Mass Burial Tomb: general view looking north showing remaining vaulting, north end wall (top), entrance blocking (bottom), and *in situ* burials in B XIX.

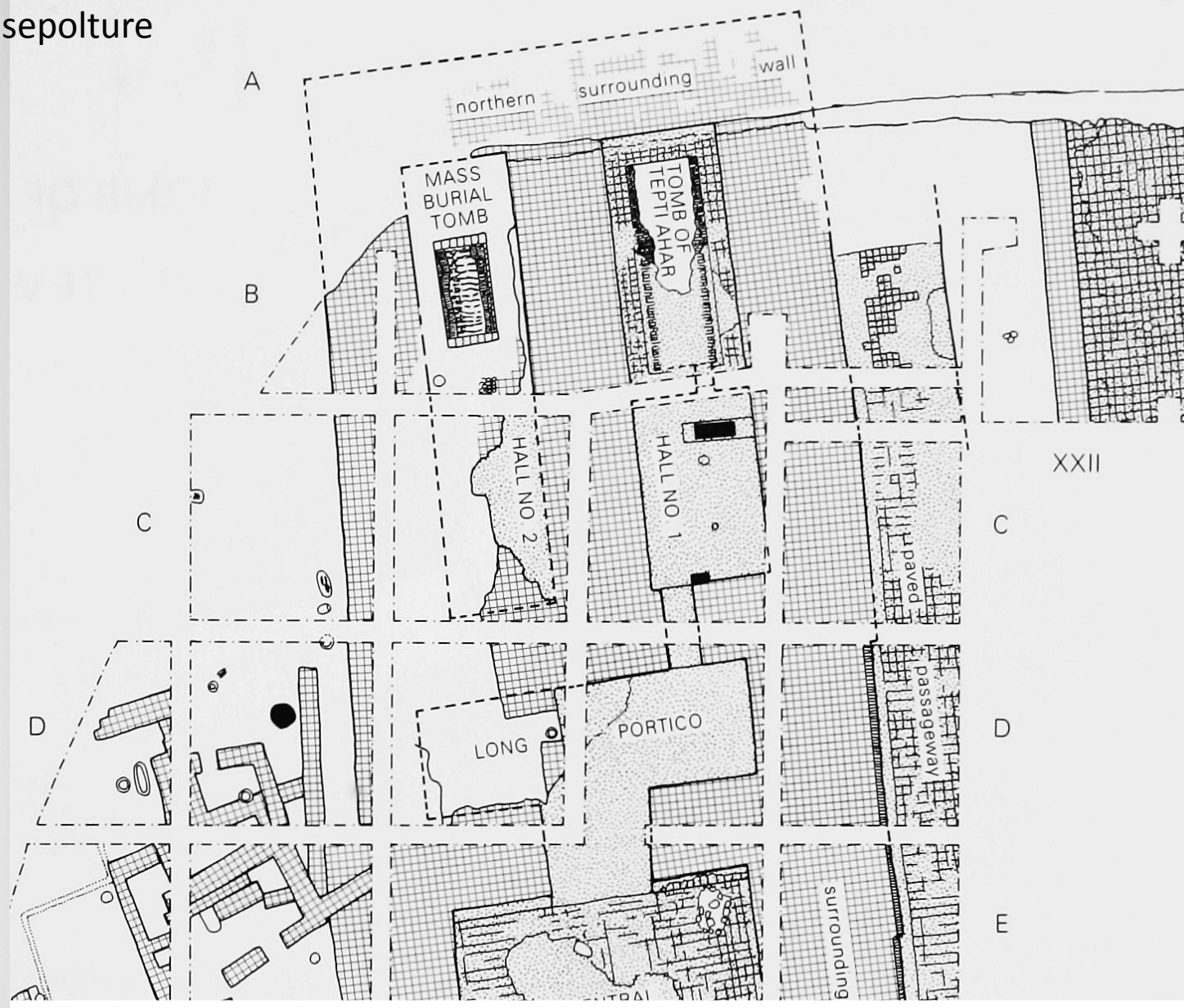


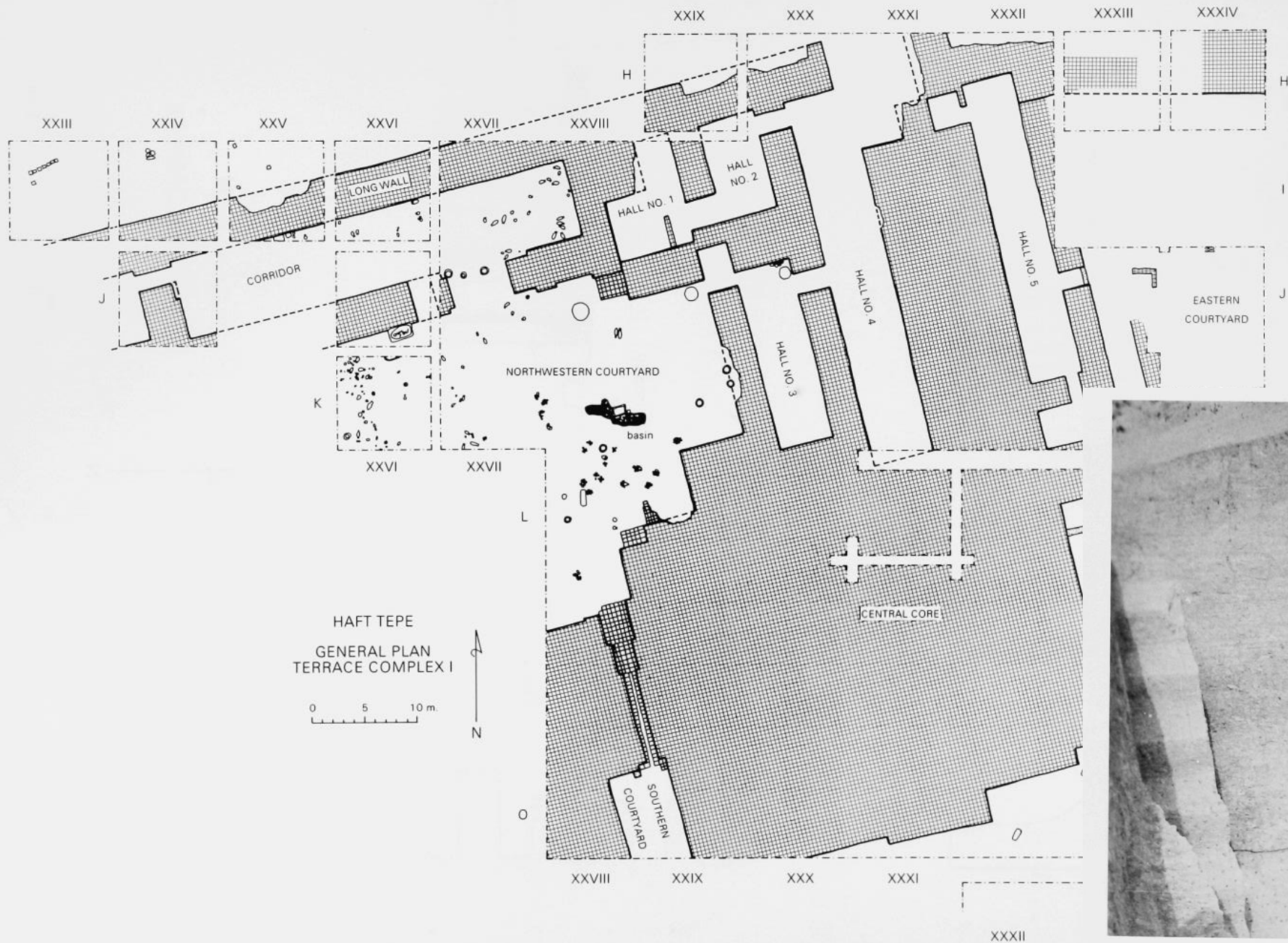
B. Vaulted Mass Burial Tomb: detail of skeletons arranged along the east side of the tomb facing north in B XIX.





23 sepulture





B. Hall no. 4: brick side wall and southern end of the hall in K XXXI.

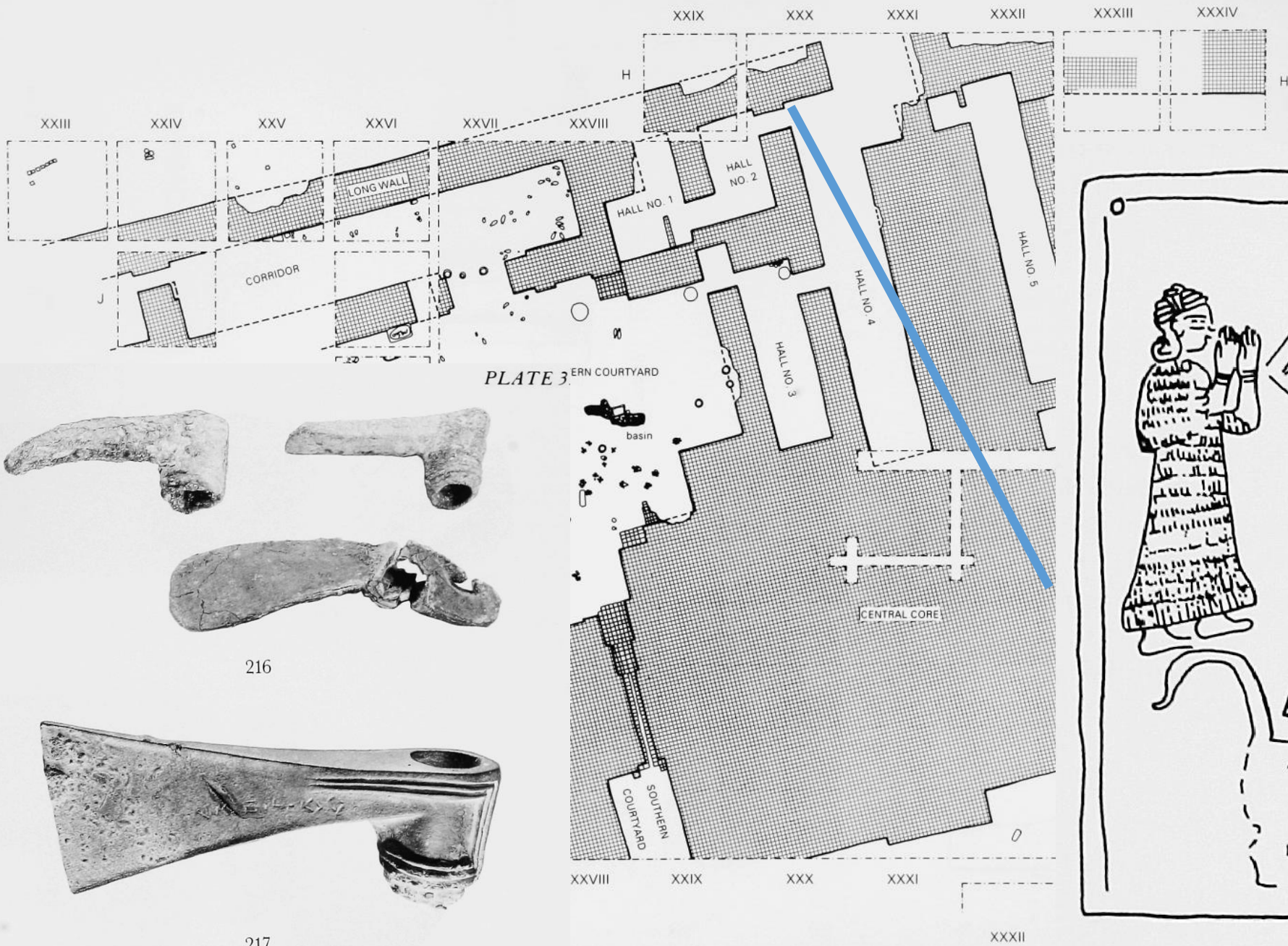


PLATE 3. ERN COURTYARD

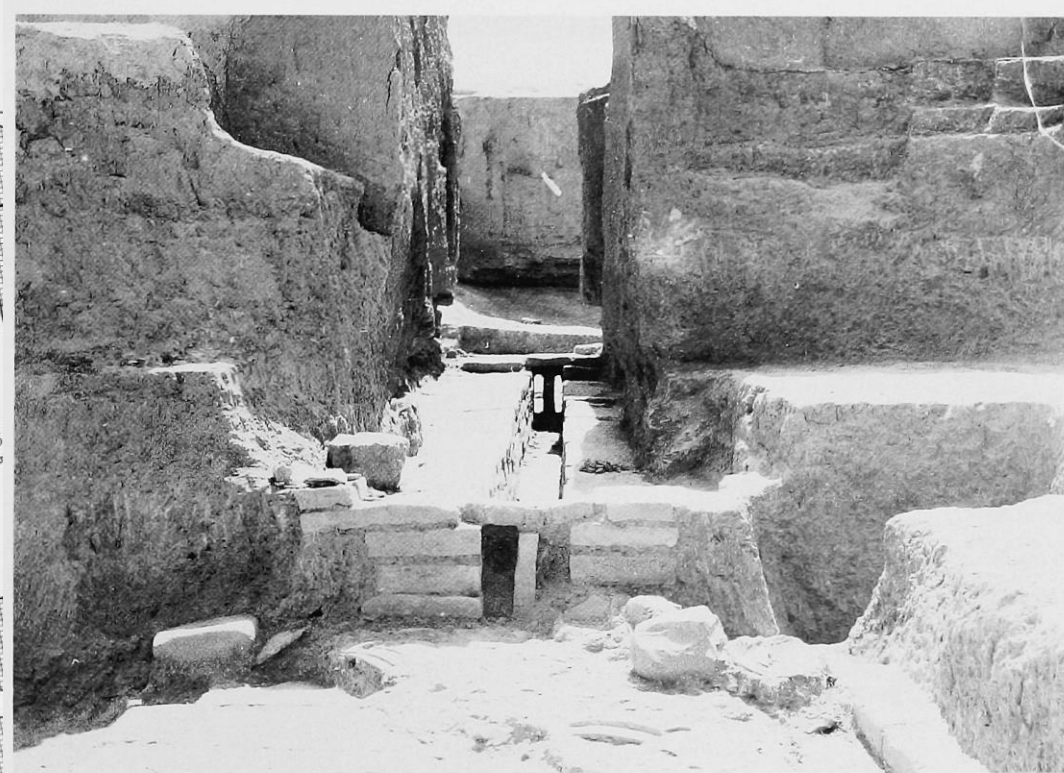
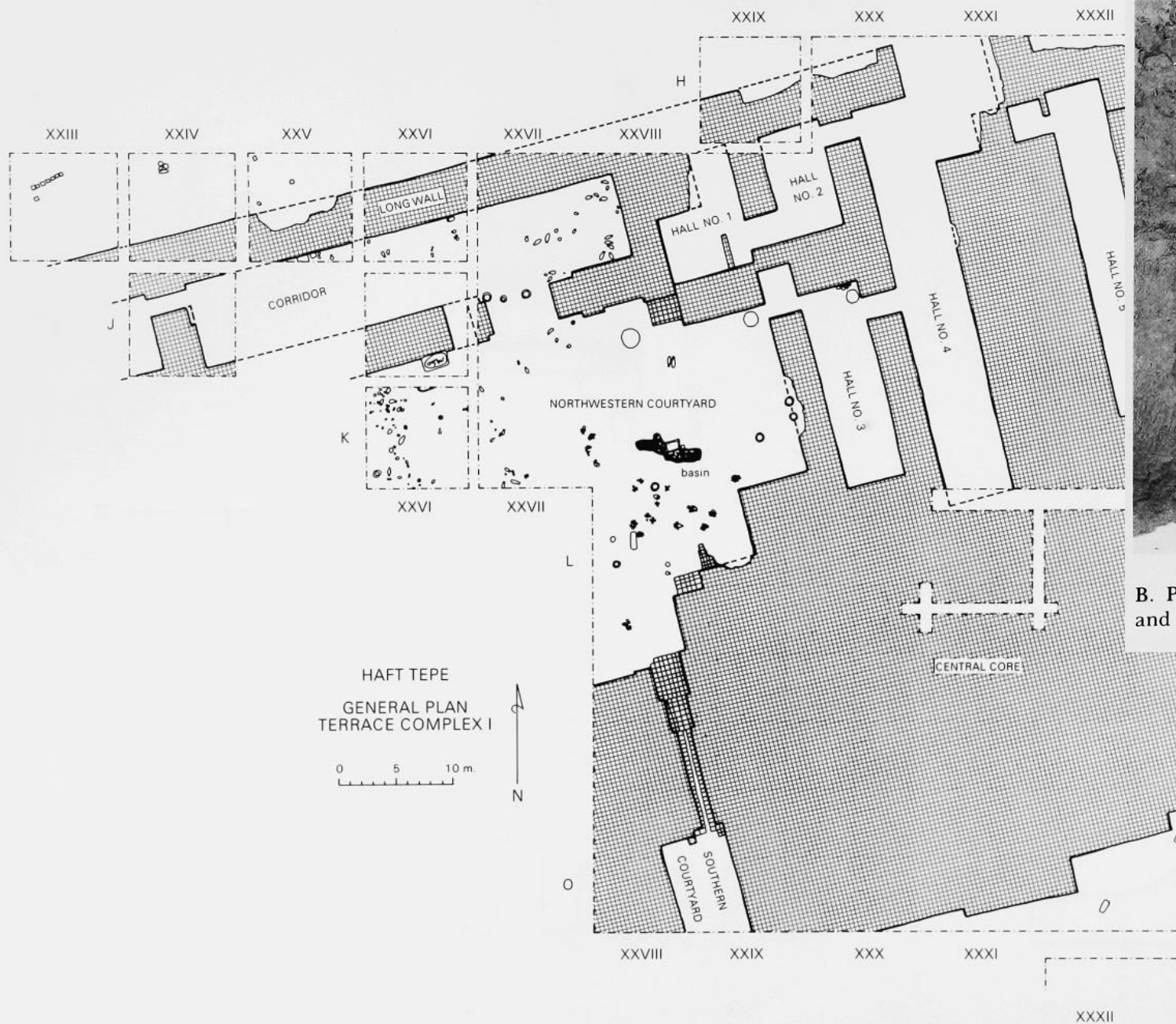


216

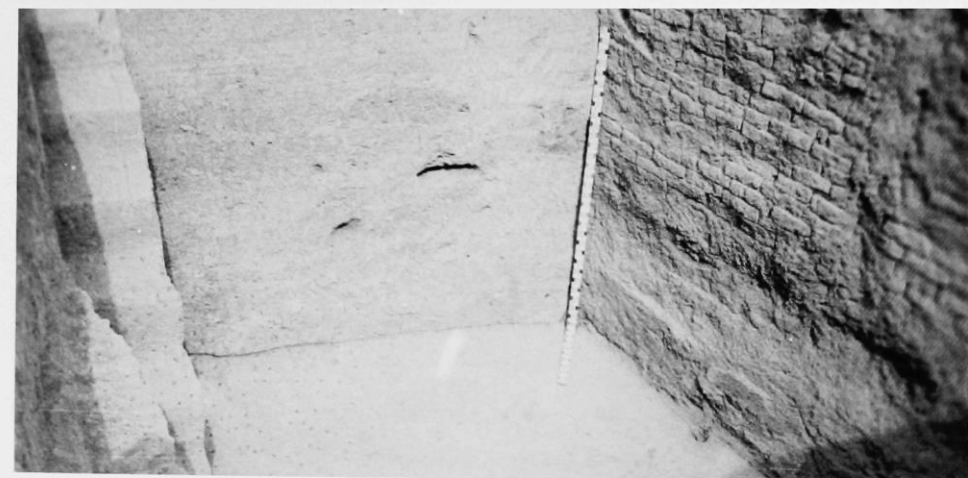
217



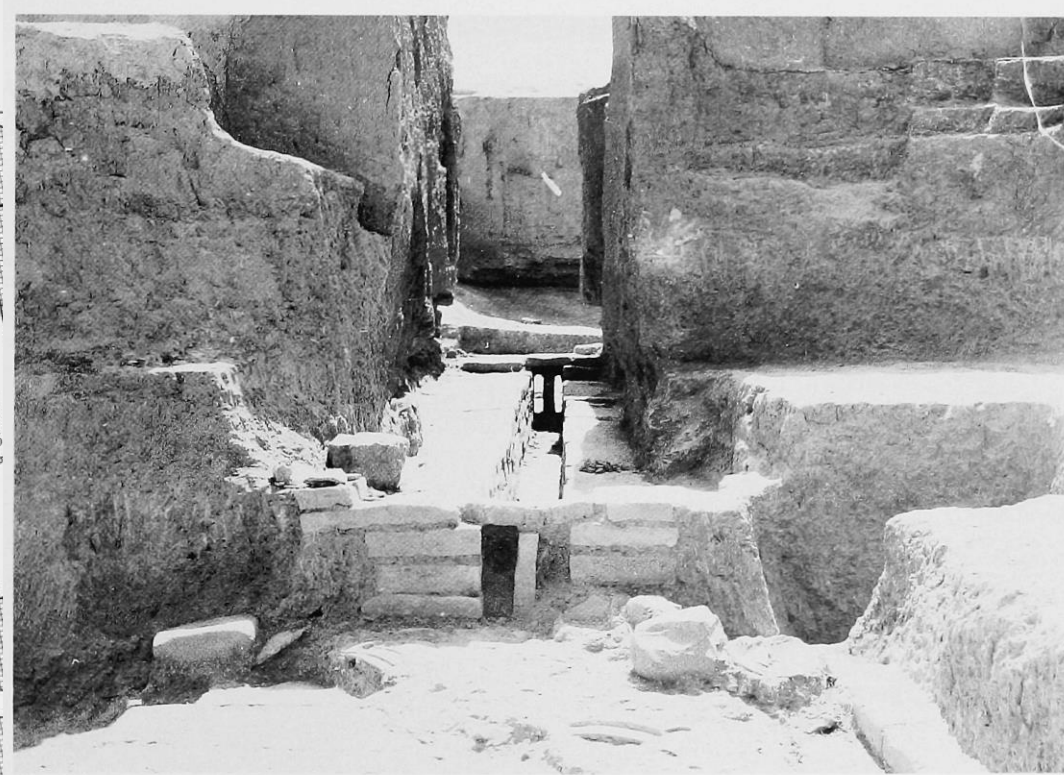
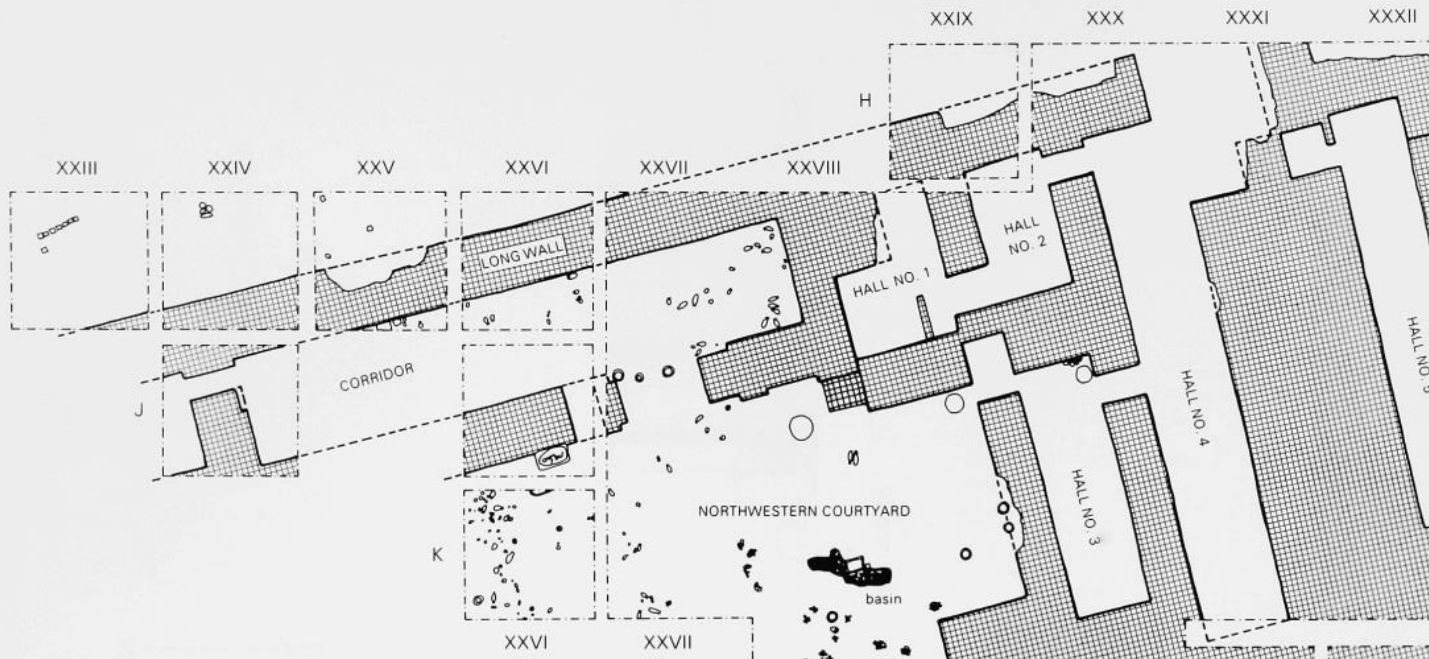
Ill. 48



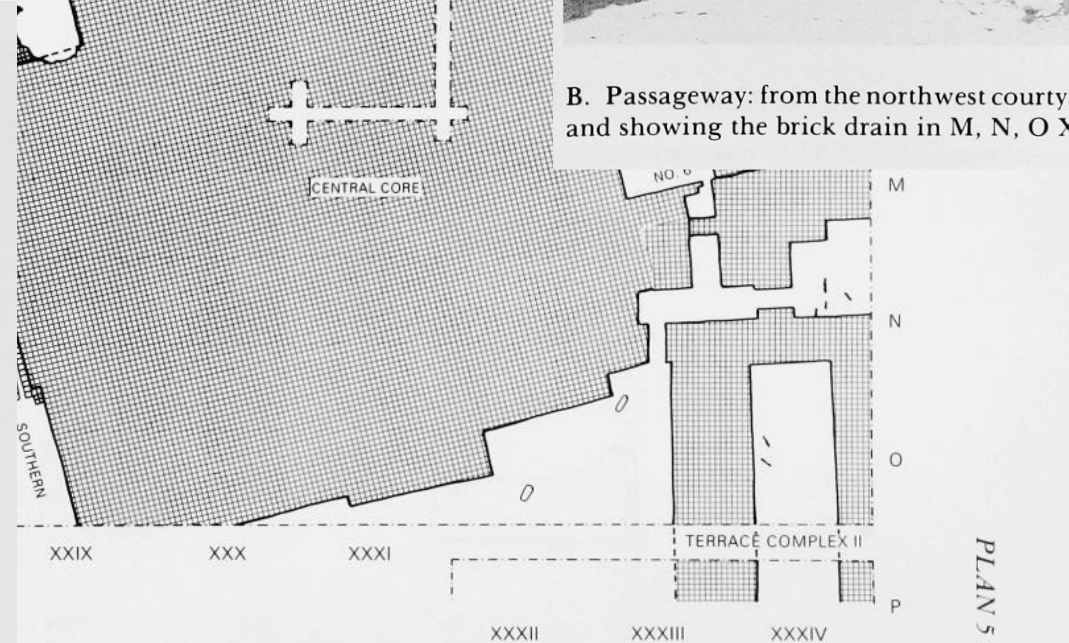
B. Passageway: from the northwest courtyard to the southern courtyard looking southeast and showing the brick drain in M, N, O XXVIII.



B. Hall no. 4: brick side wall and southern end of the hall in K XXXI.

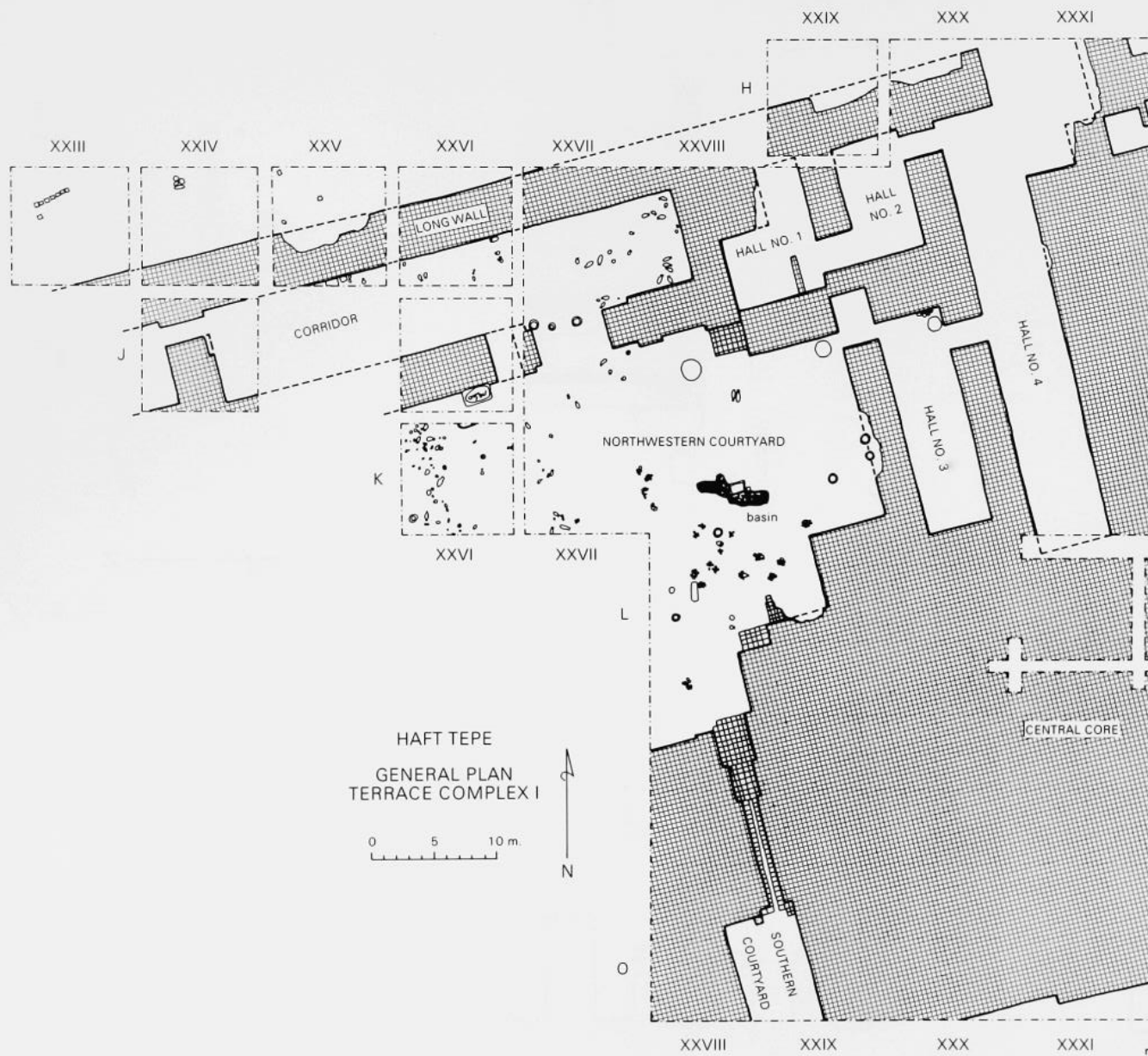


B. Passageway: from the northwest courtyard to the southern courtyard looking southeast and showing the brick drain in M, N, O XXVIII.

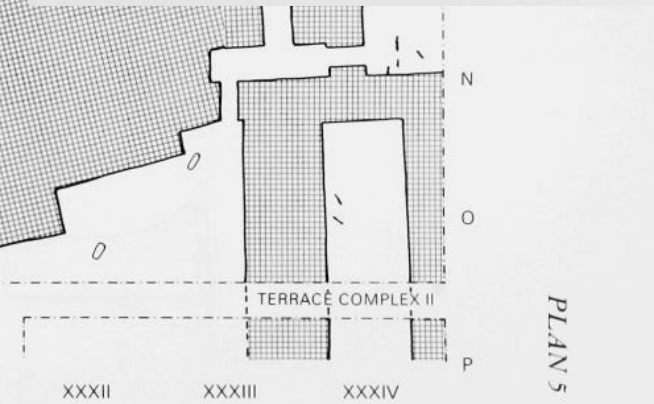


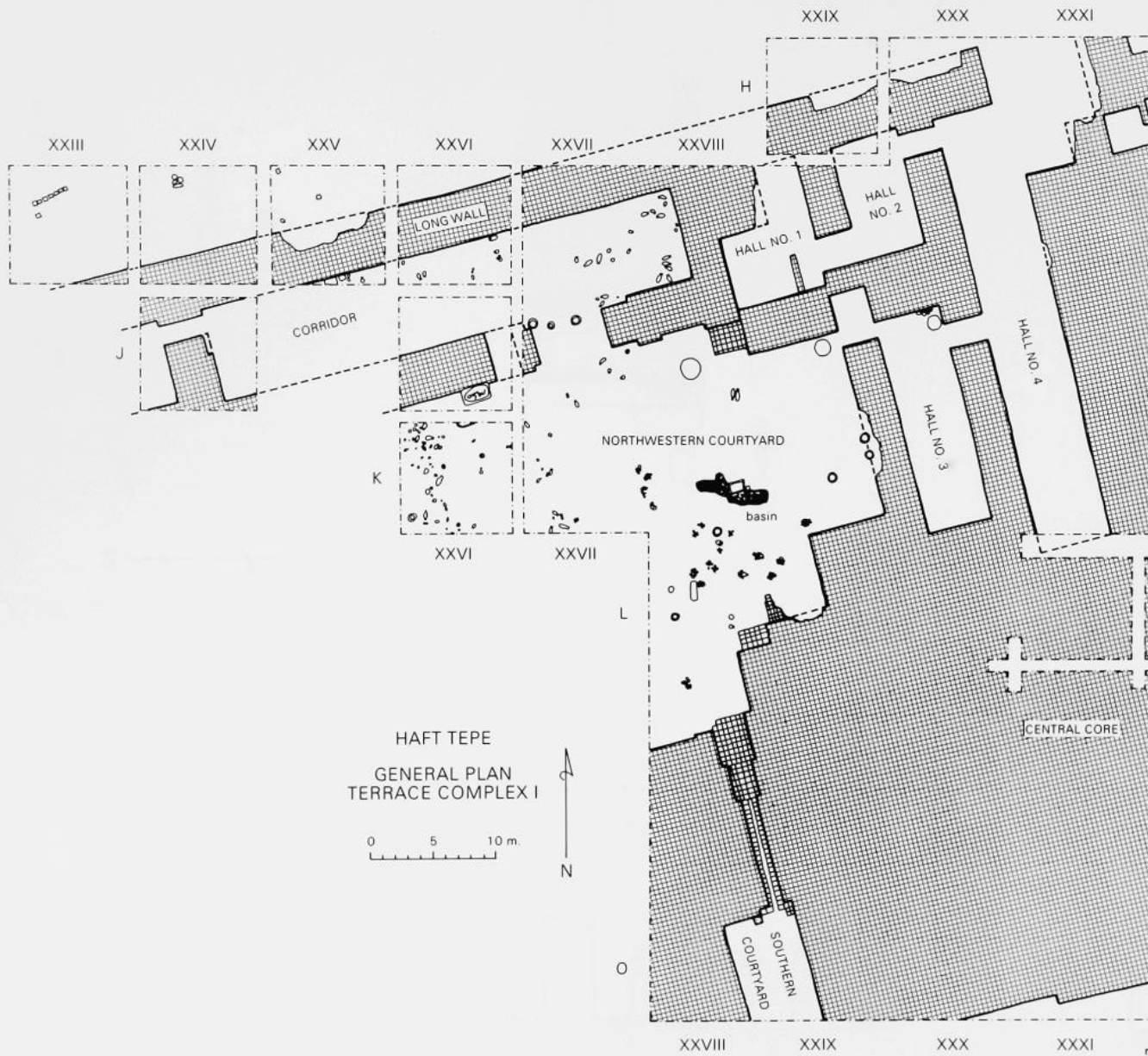
PLAN 5

A. Northwest Courtyard: basin and sherd fill looking southeast in K XXVIII.

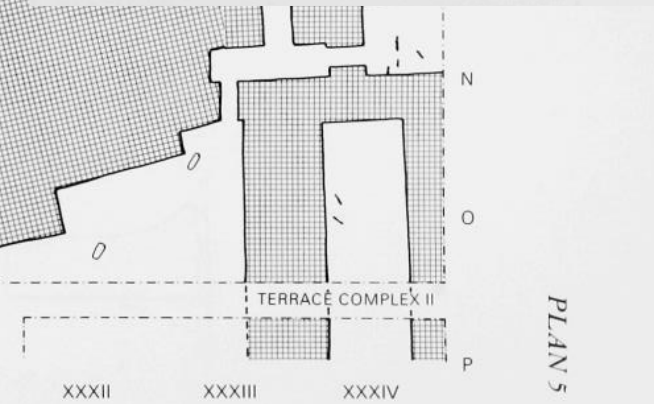


A. Corridor: pottery jars in fill at the eastern end of the corridor in I XXVII.





A. Corridor: pottery jars in fill at the eastern end of the corridor in I XXVII.





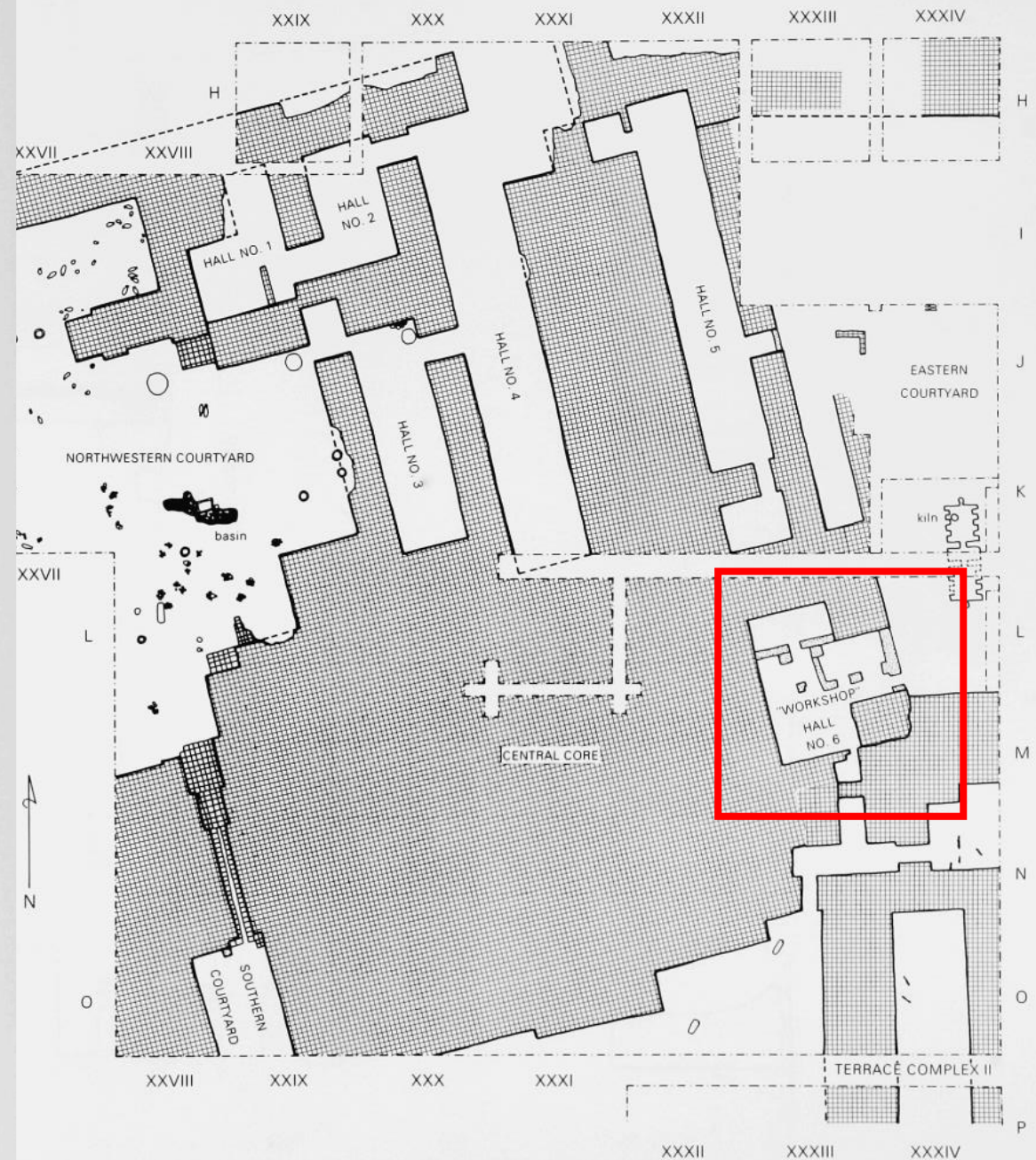
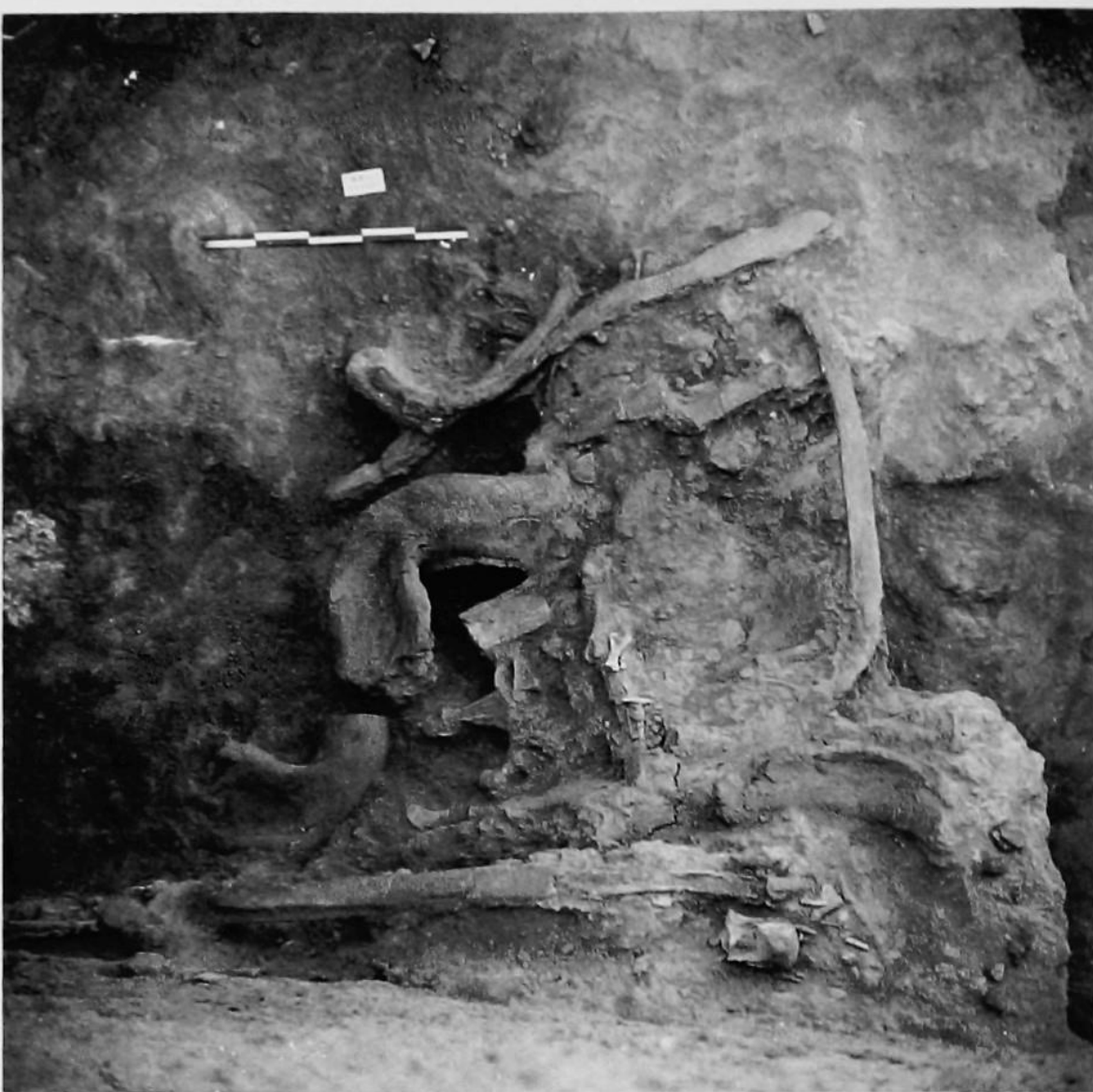
B. Central Core: seen from the northeast showing Hall no. 5 and its entrance (lower left) in J XXXII.



HAFT TEPE
 GENERAL PLAN
 TERRACE COMPLEX I

0 5 10 m.

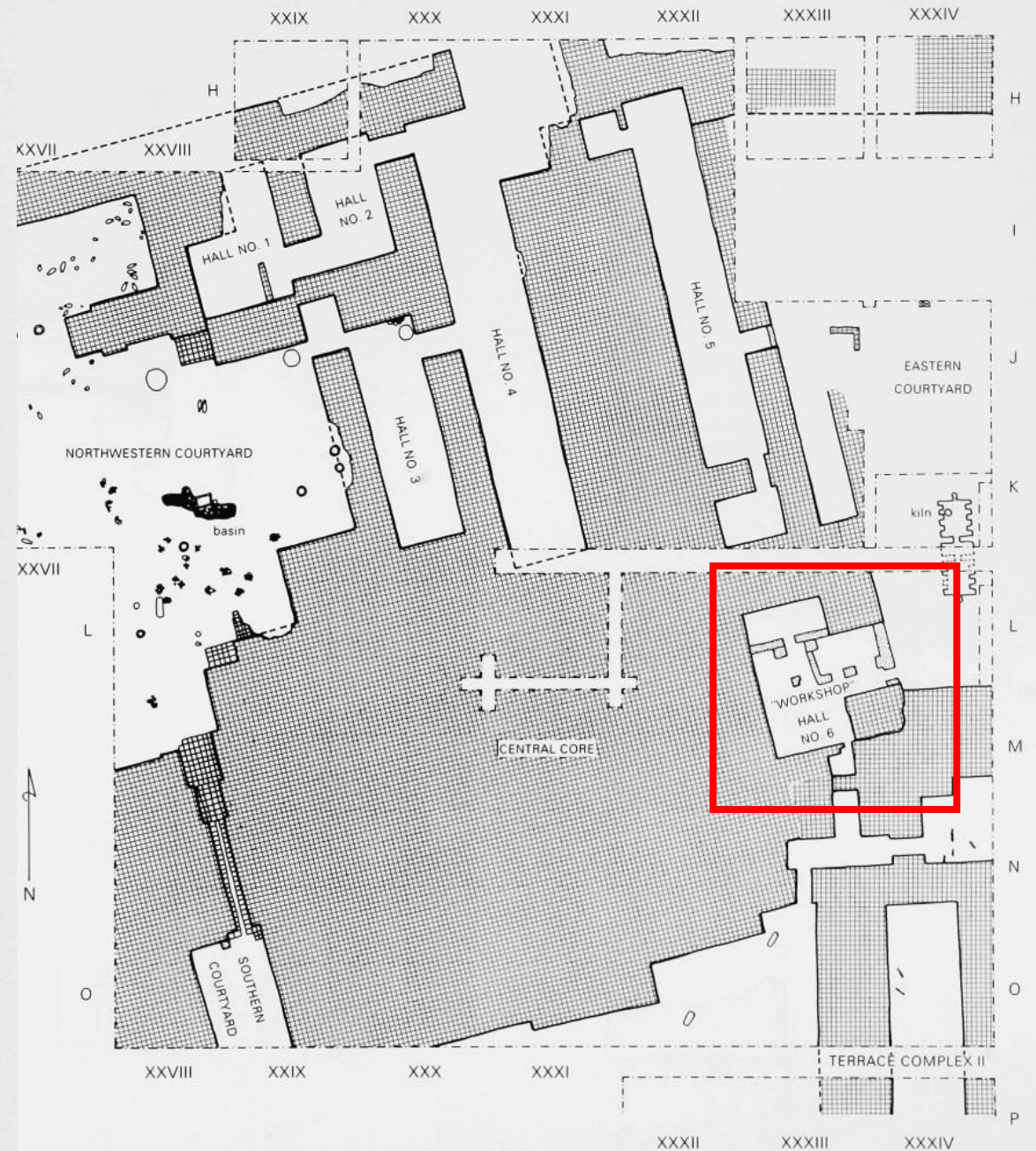
N

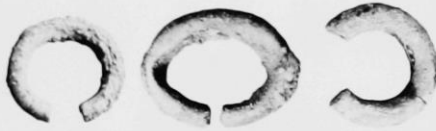
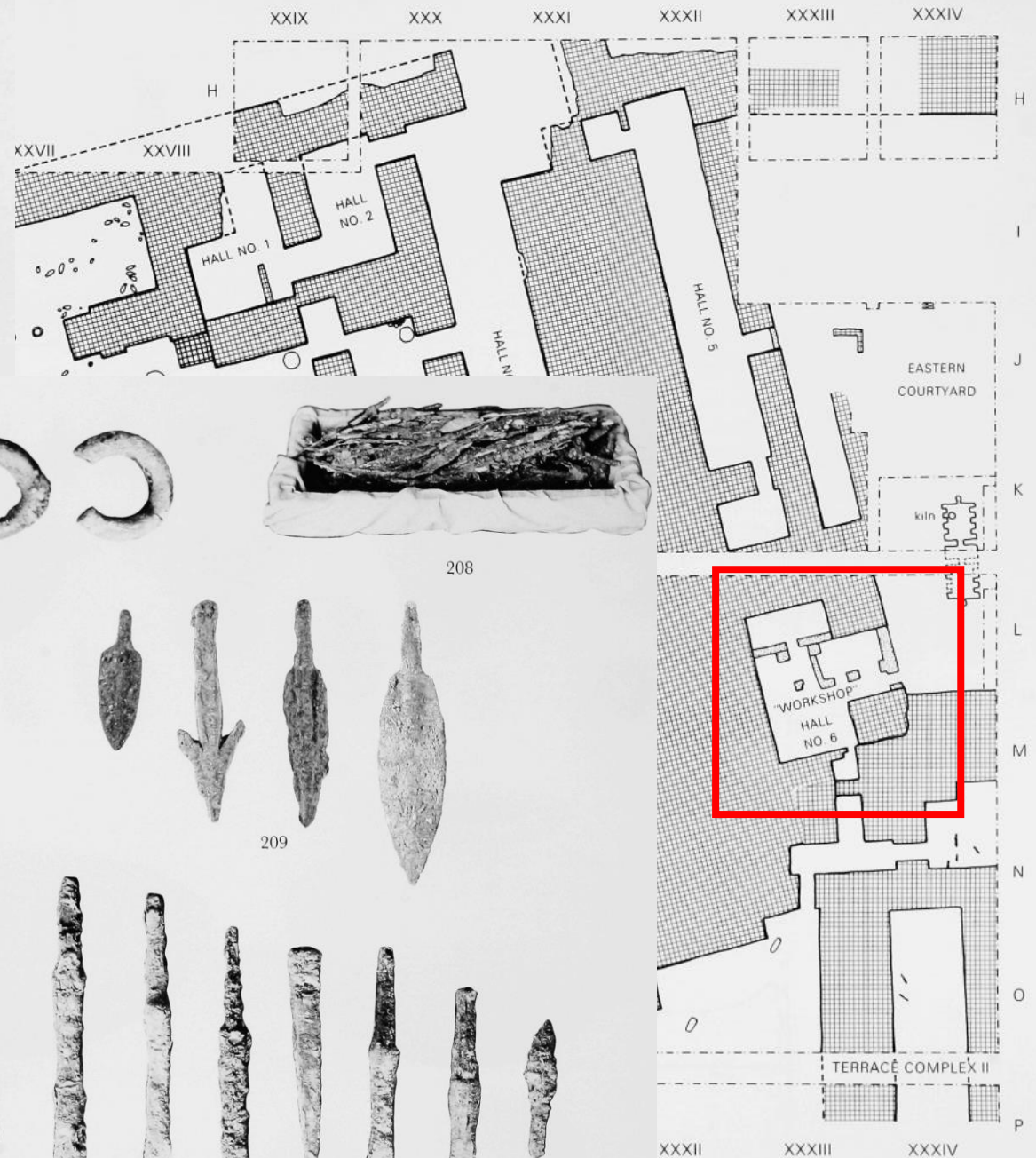
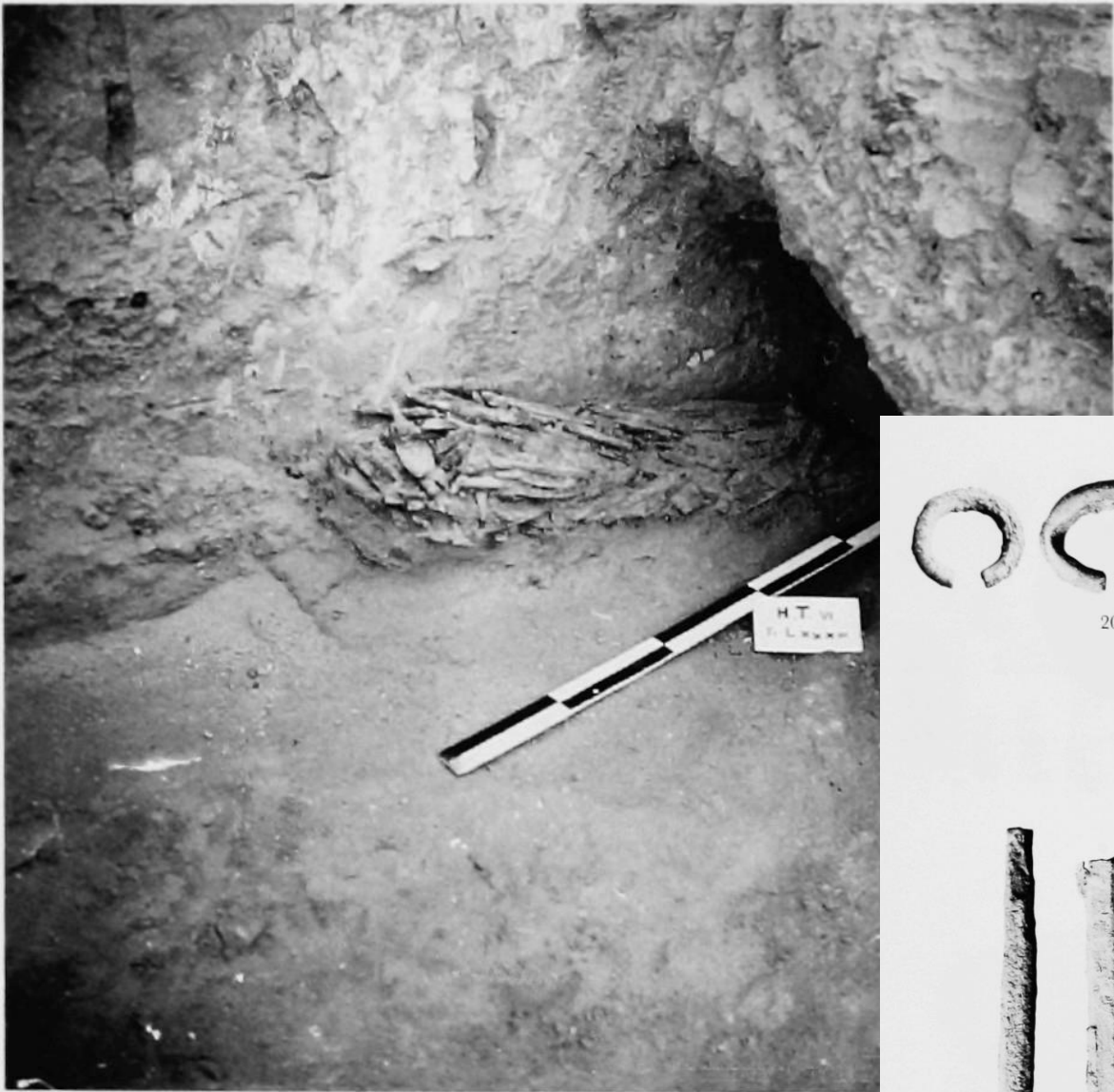


B. Hall no. 6: bones of an elephant partially excavated in the northwest corner of the northeast room of Hall no. 6 in L XXXIII.

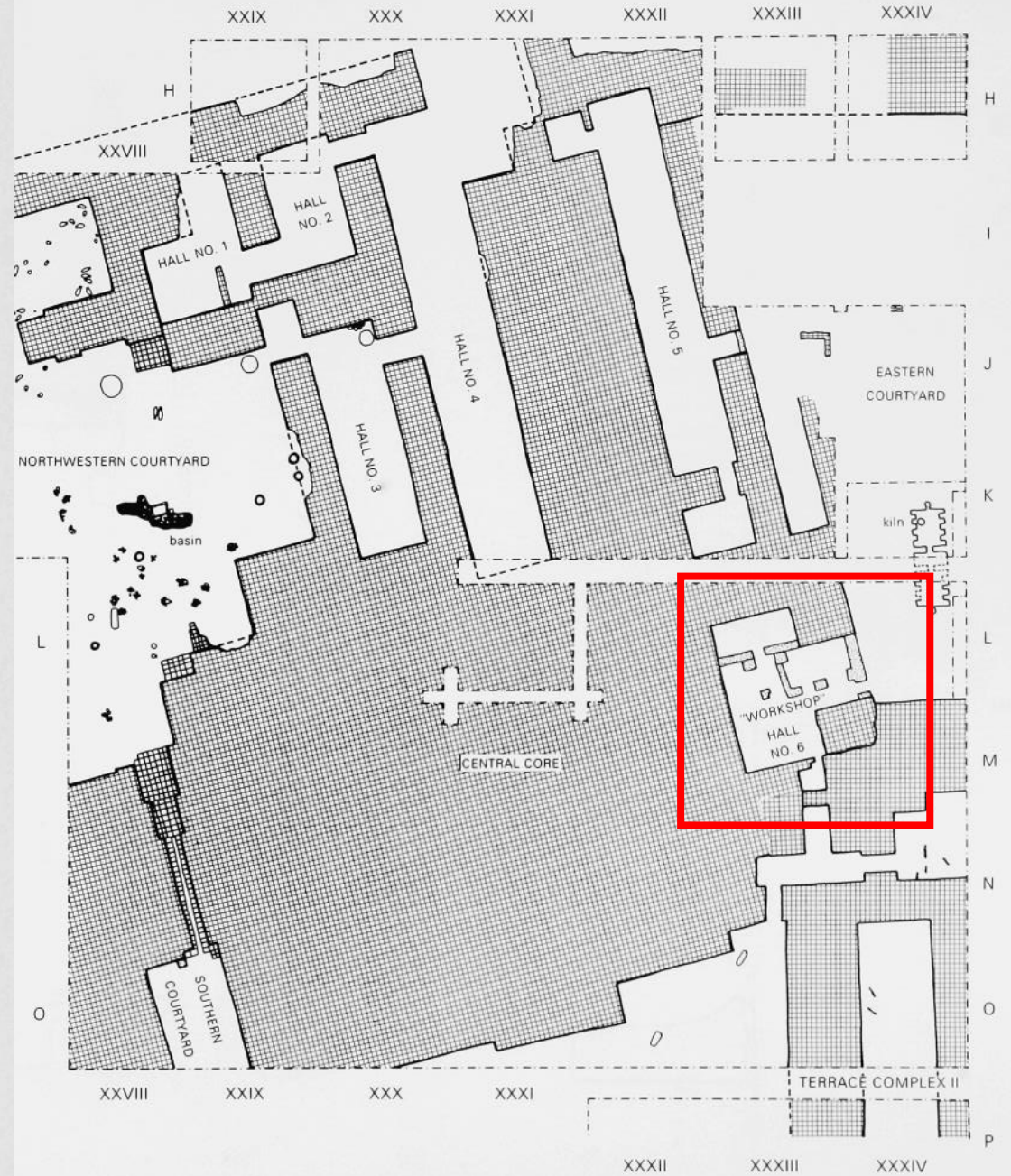


C. Hall no. 6: pile of bronze arrowpoints in northwest corner of the northeast room in L XXXIII.





C. Hall no. 6: pile of bronze arrowpoints in corner of the northeast room in L XXXIII.



D. Hall no. 6: statue head *in situ* in the northwest corner of the main room of Hall no. 6, in L XXXIII.



167



168



169

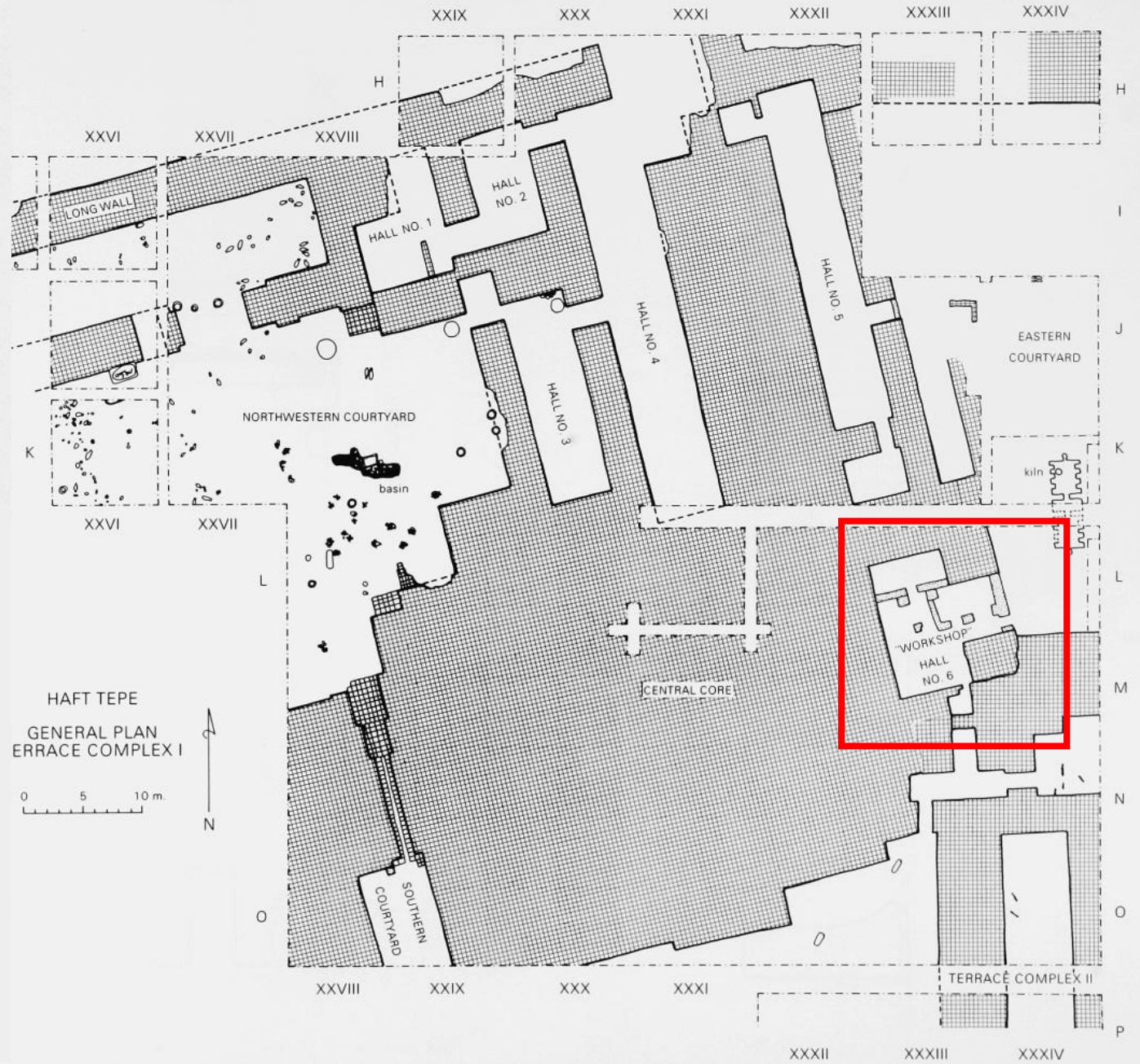
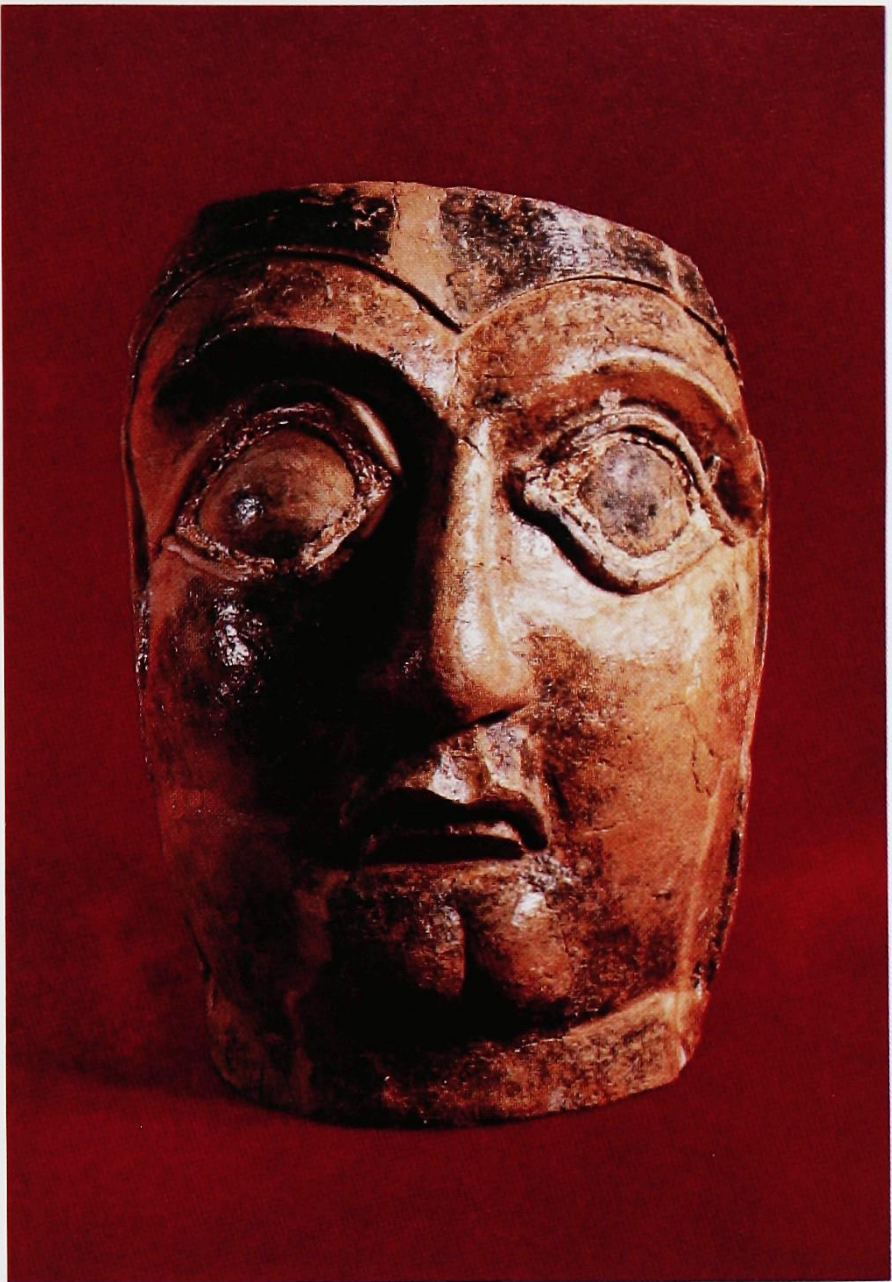


PE
PLAN
MPLEX I

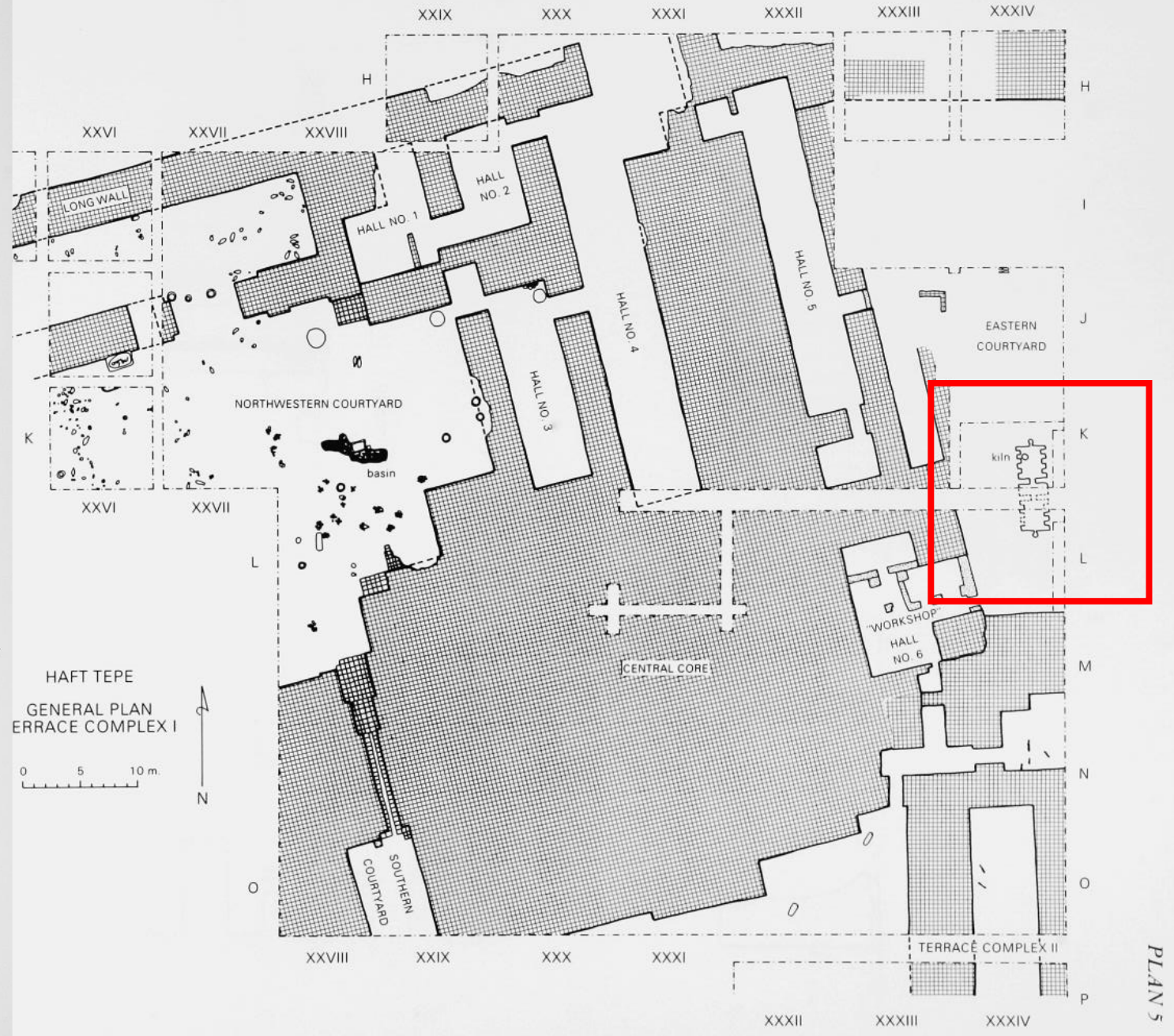
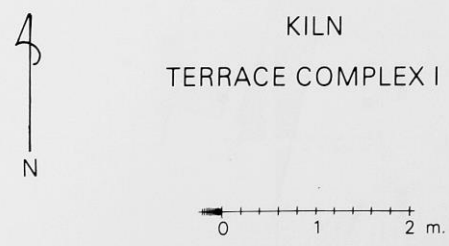
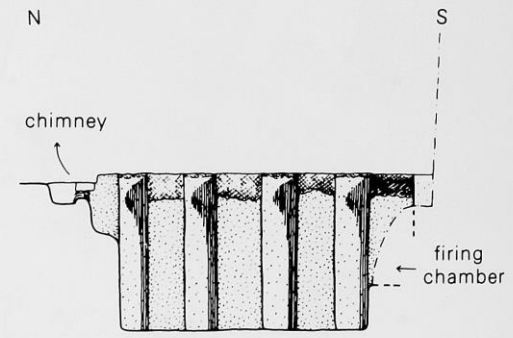
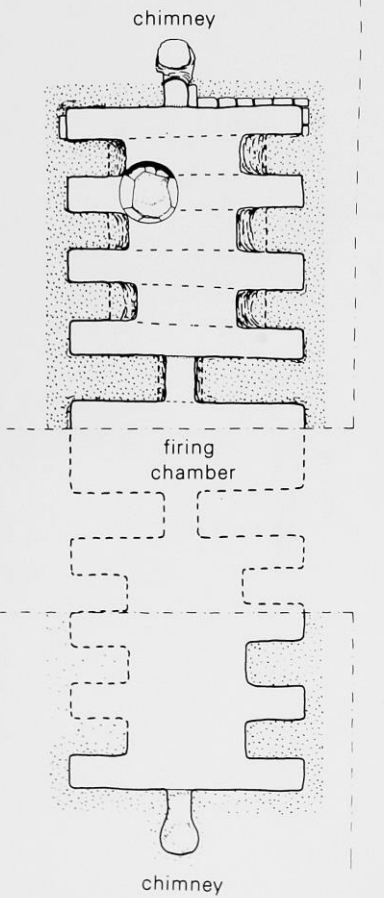
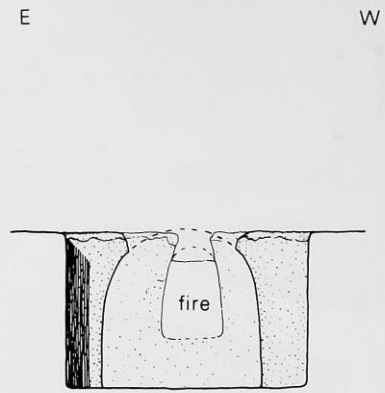
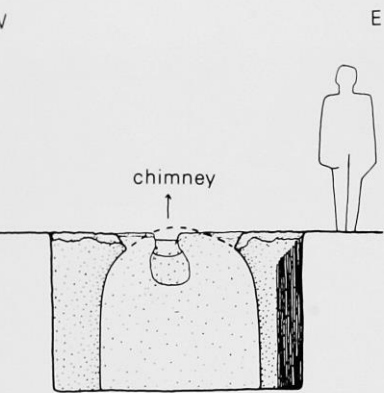
10 m.

N

PLAN 5

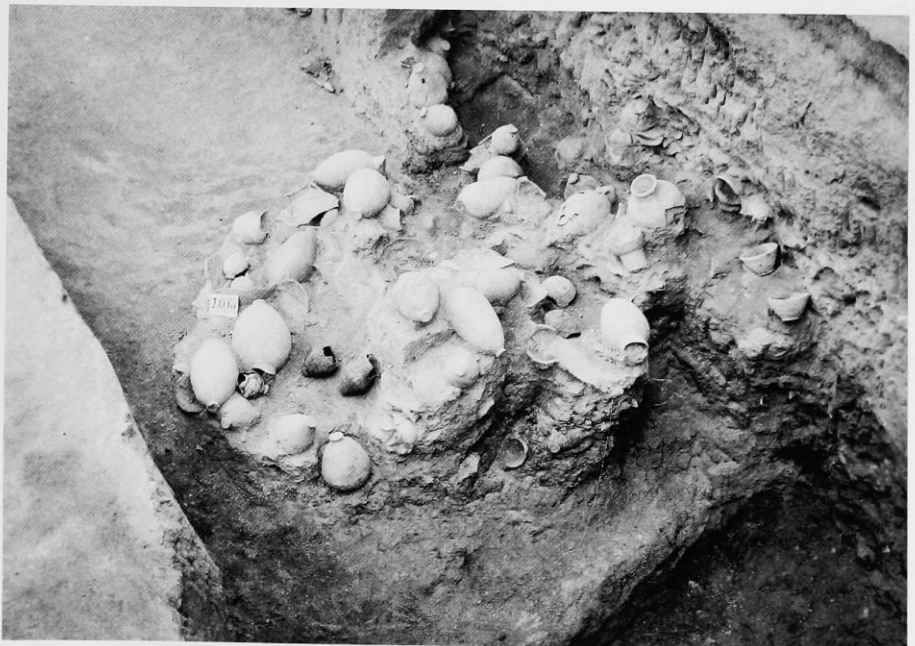


HAFT TEPE
GENERAL PLAN
ERRACE COMPLEX I

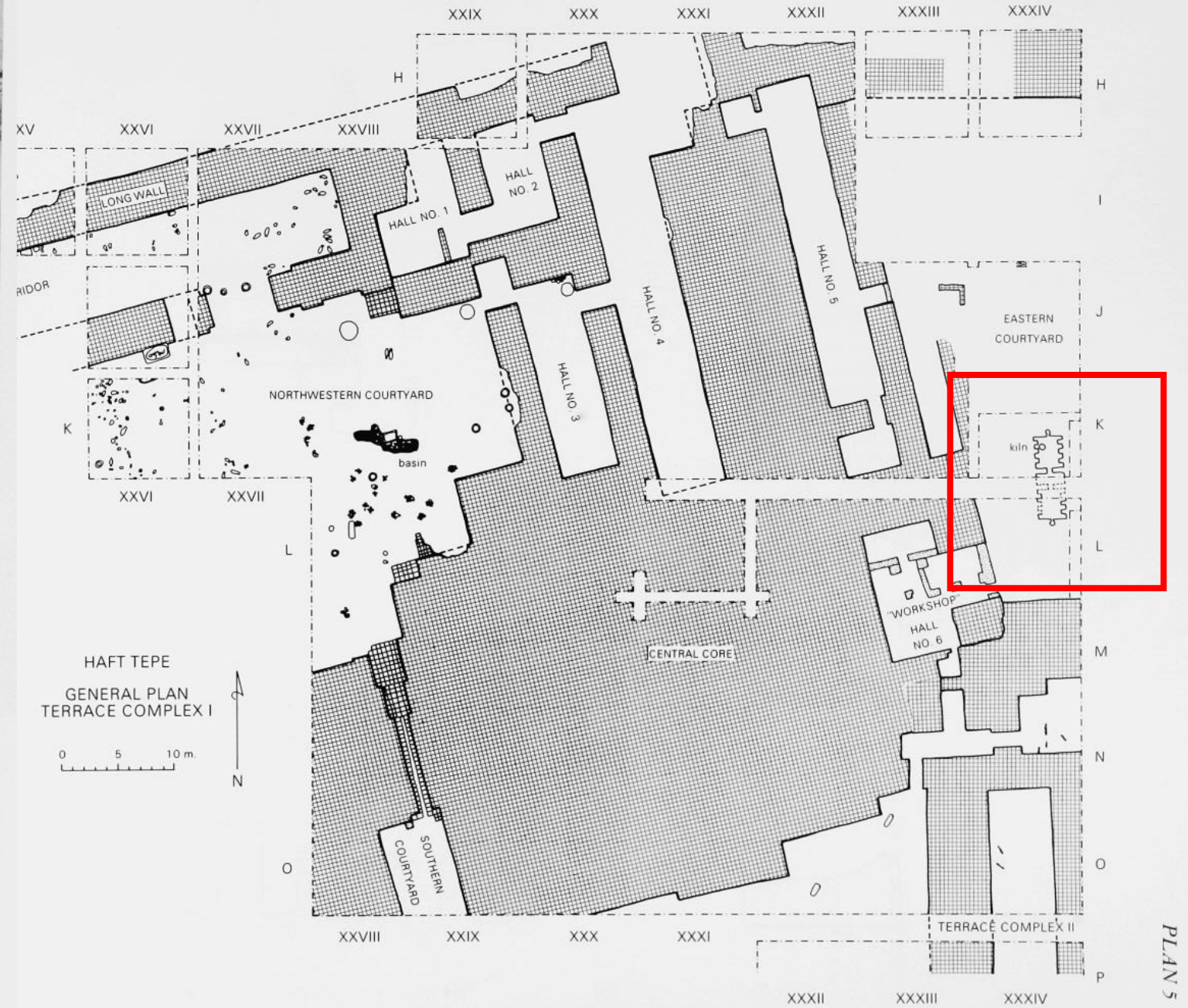


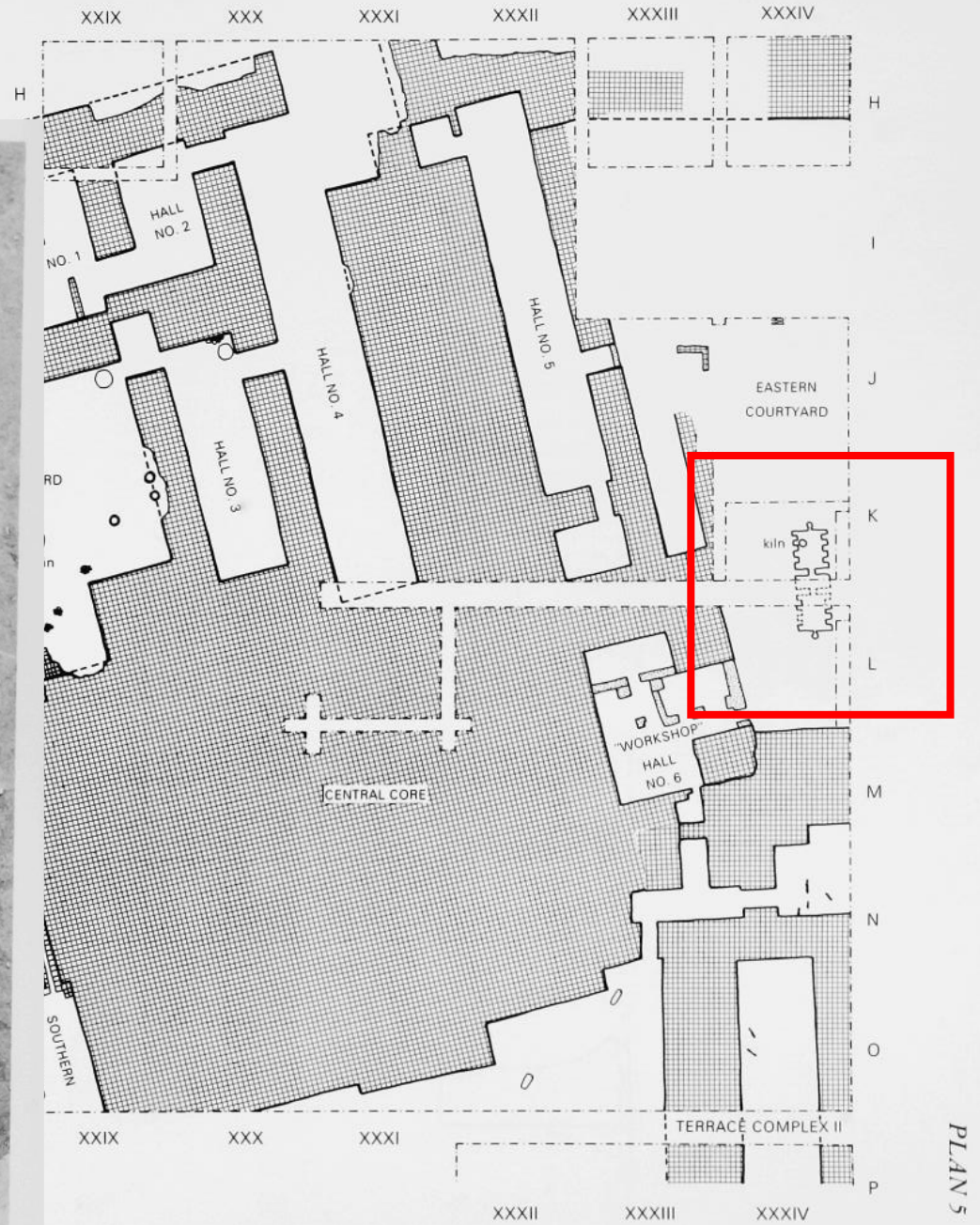


A. Kiln: northern compartment; in the Eastern Courtyard just north of Hall no. 6 in K XXXIV. Chimney (lower right); firing chamber (top left).



B. Kiln: pottery found north of the kiln in the Eastern Courtyard in I XXXIV





Kiln: pottery found north of the kiln in the Eastern Courtyard in J XXXIV.



170



171



172



173



174



175



176



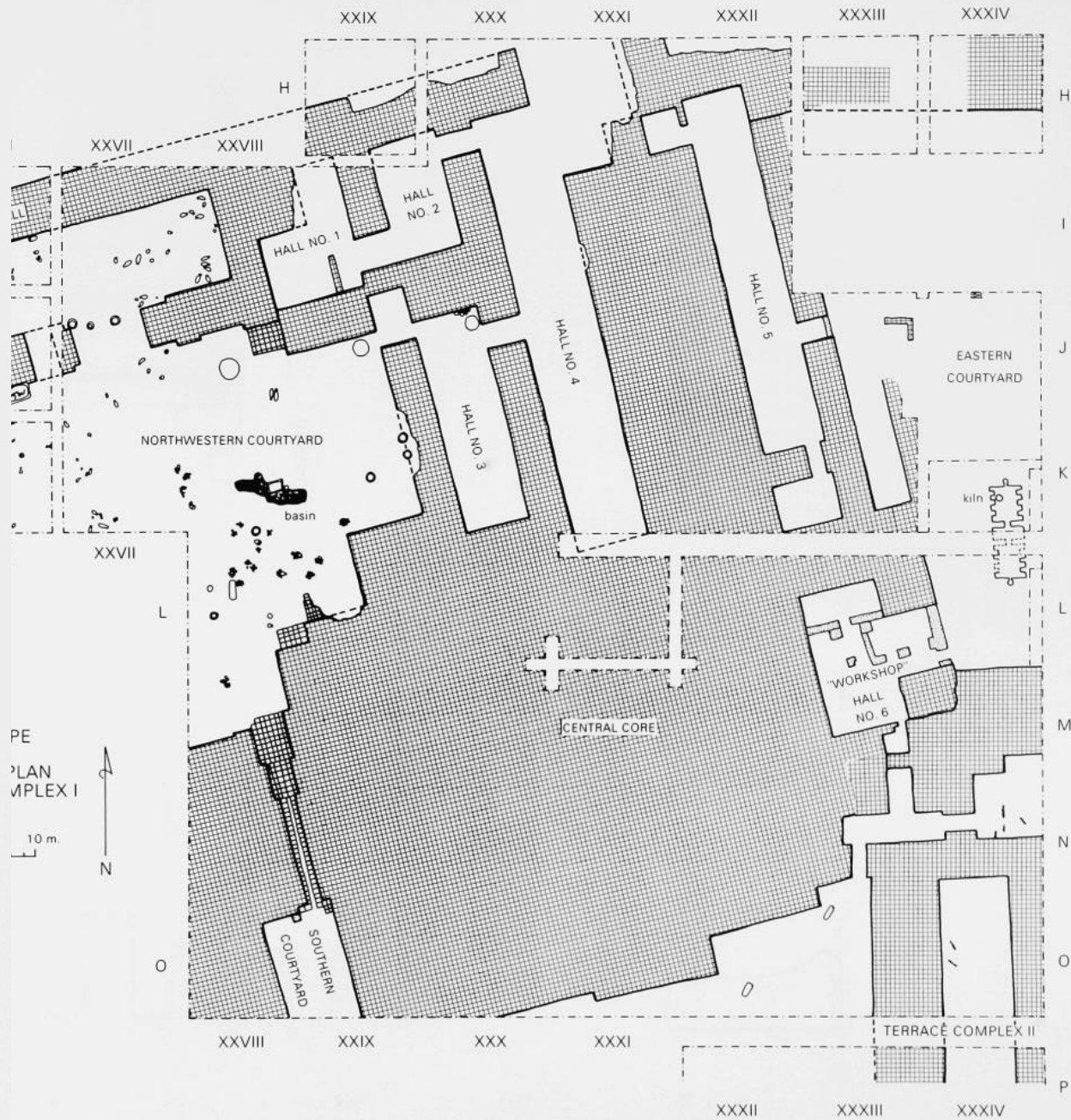
177



178



179



PLAN 5



200



201



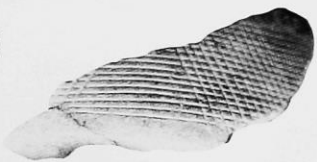
202



203



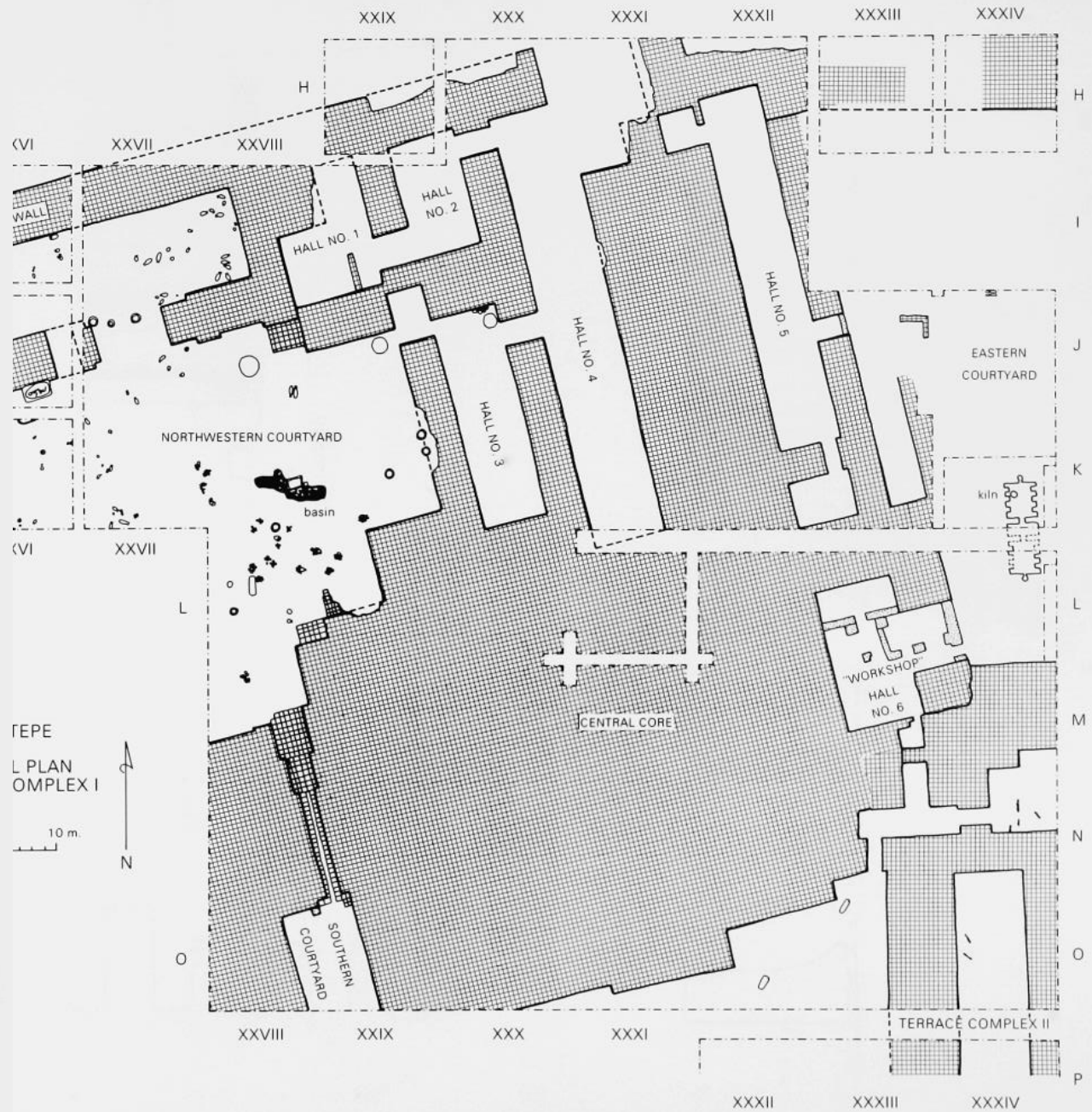
204



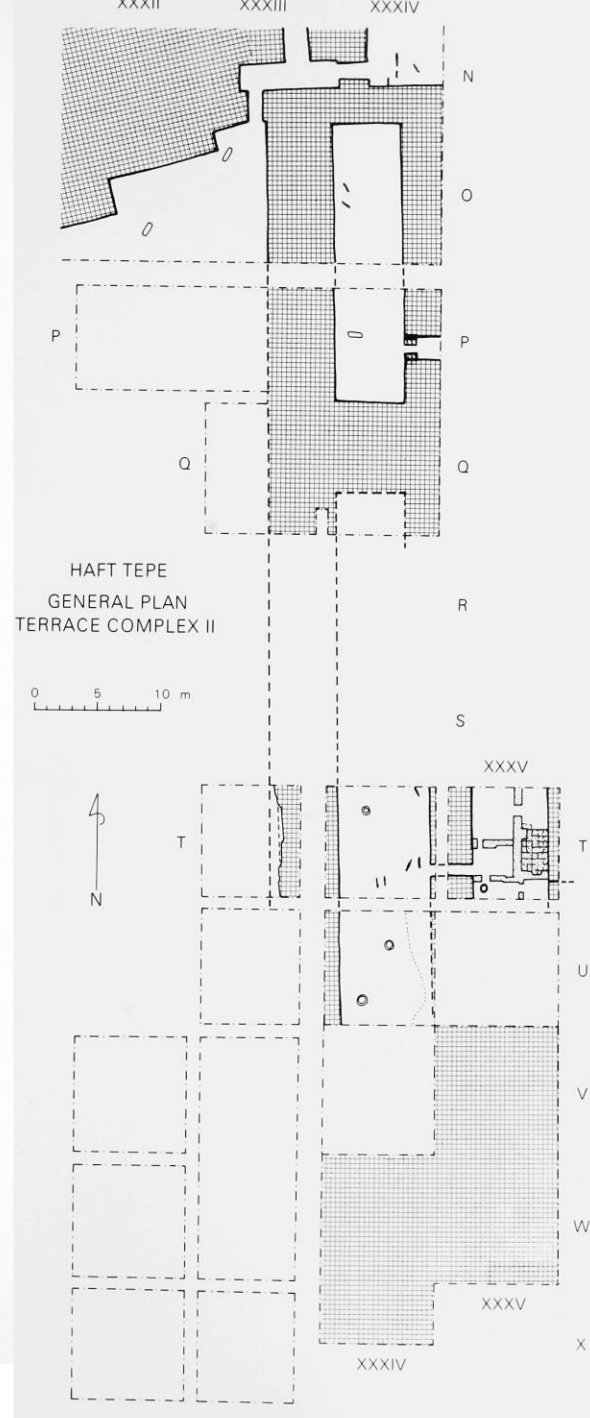
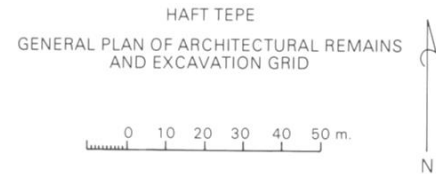
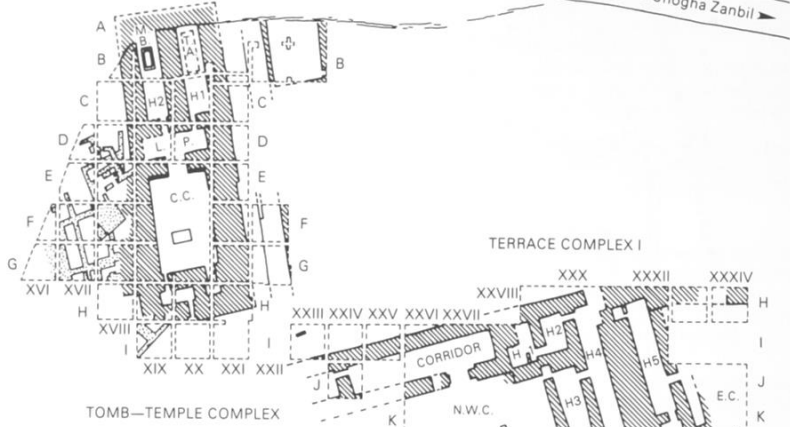
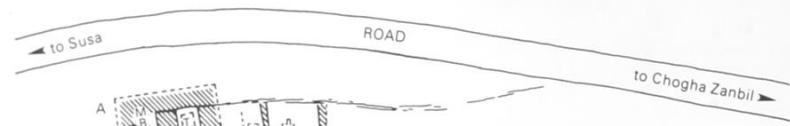
205



206



PLAN 5



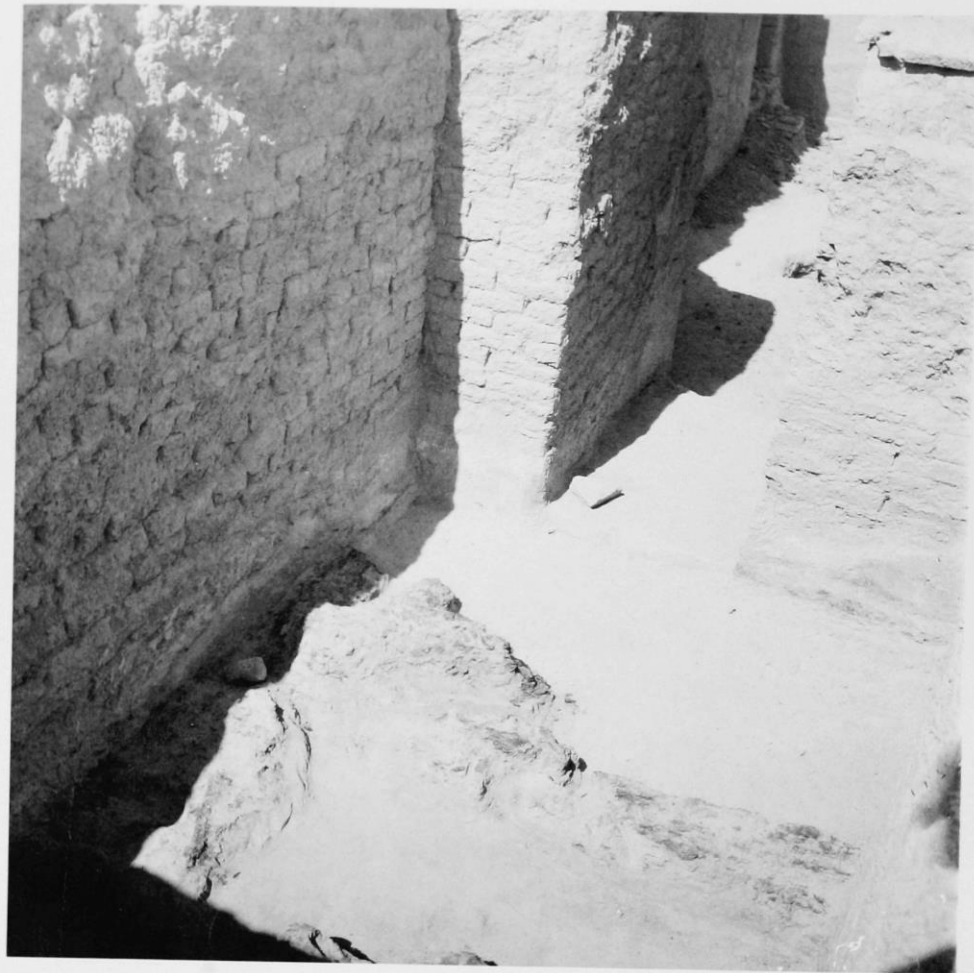
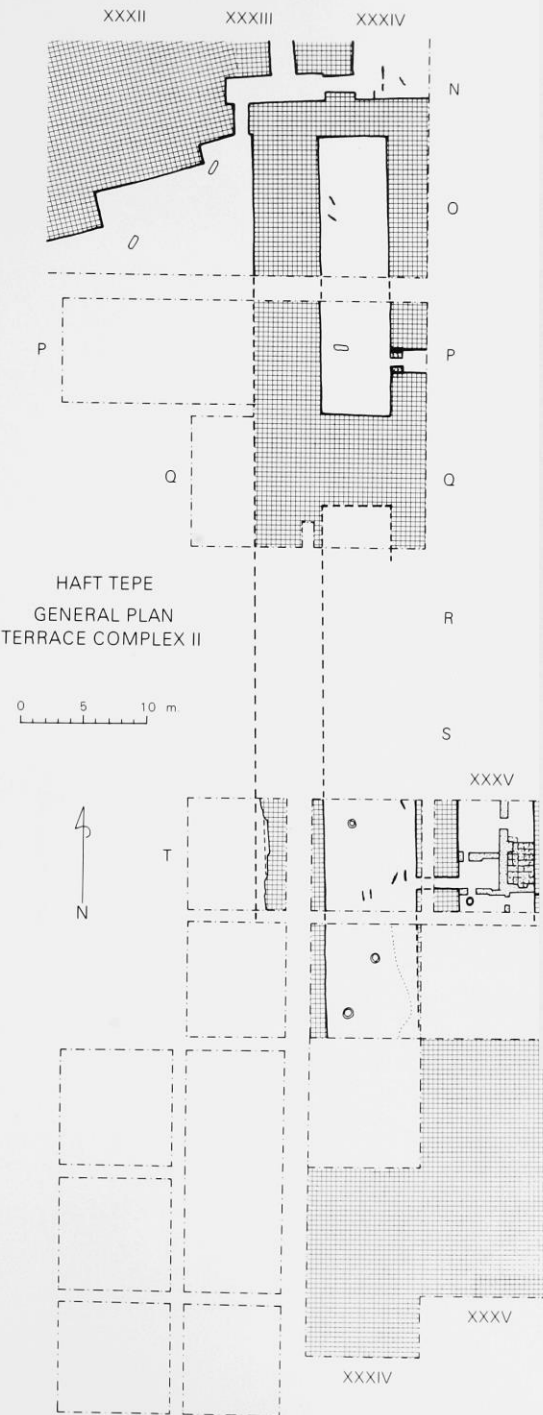
TERRACE COMPLEX II



A. Central Core: general view from Terrace Complex I looking southeast.



B. Central Core: excavations looking south from P-Q XXXII-XXXIII.



A. Central Core: general view from Terrace Complex I looking southeast.

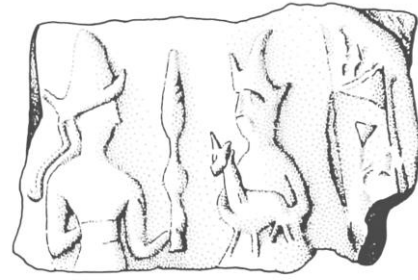


B. Central Core: excavations looking south from P-Q XXXII-XXXIII.

300
impronte di
sigillo



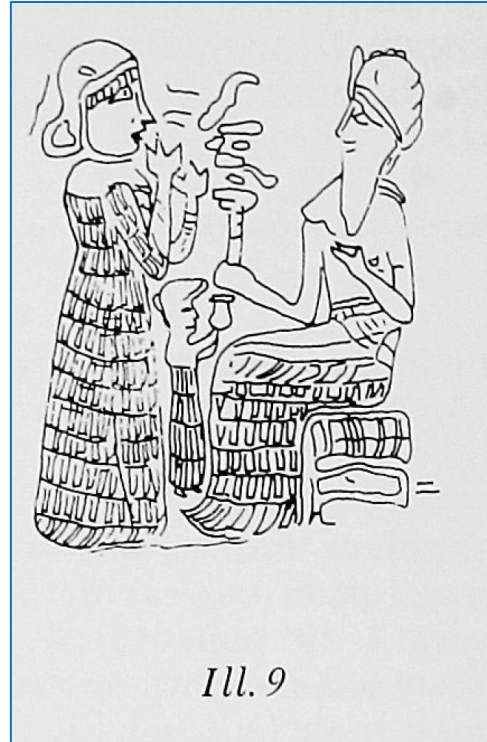
Ill. 4



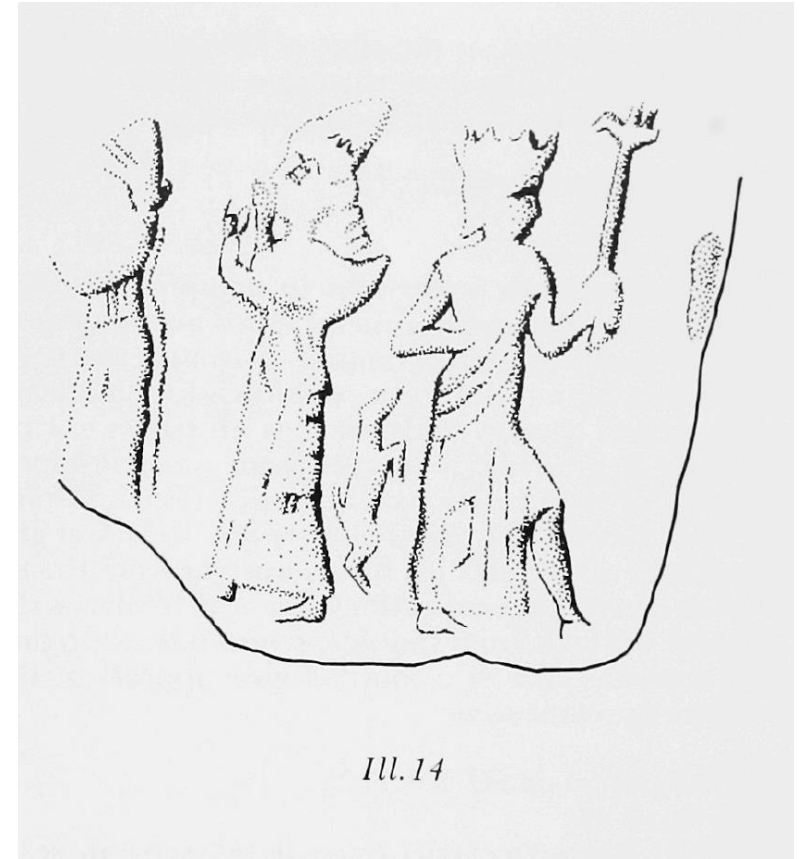
Ill. 6



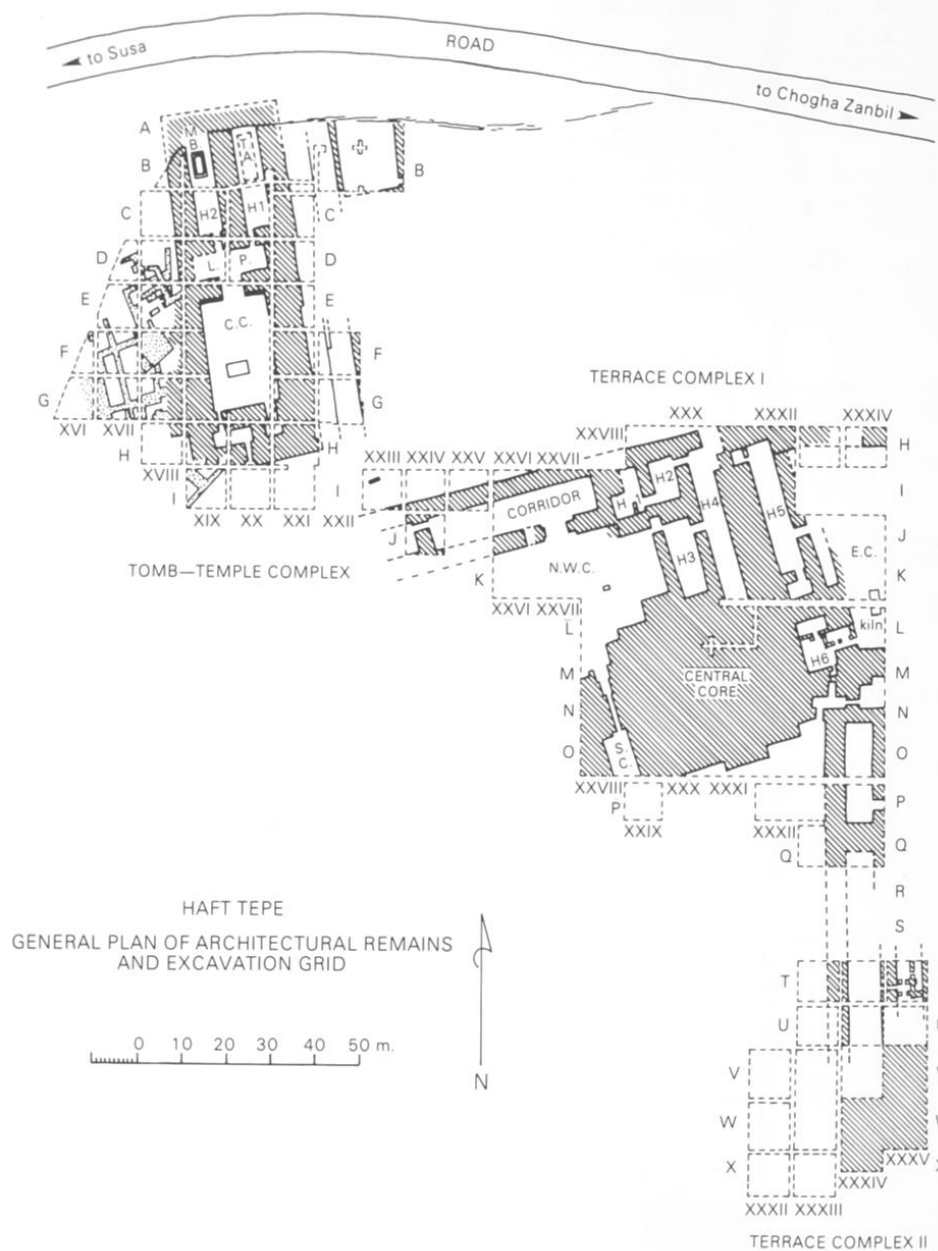
Ill. 5



Ill. 9

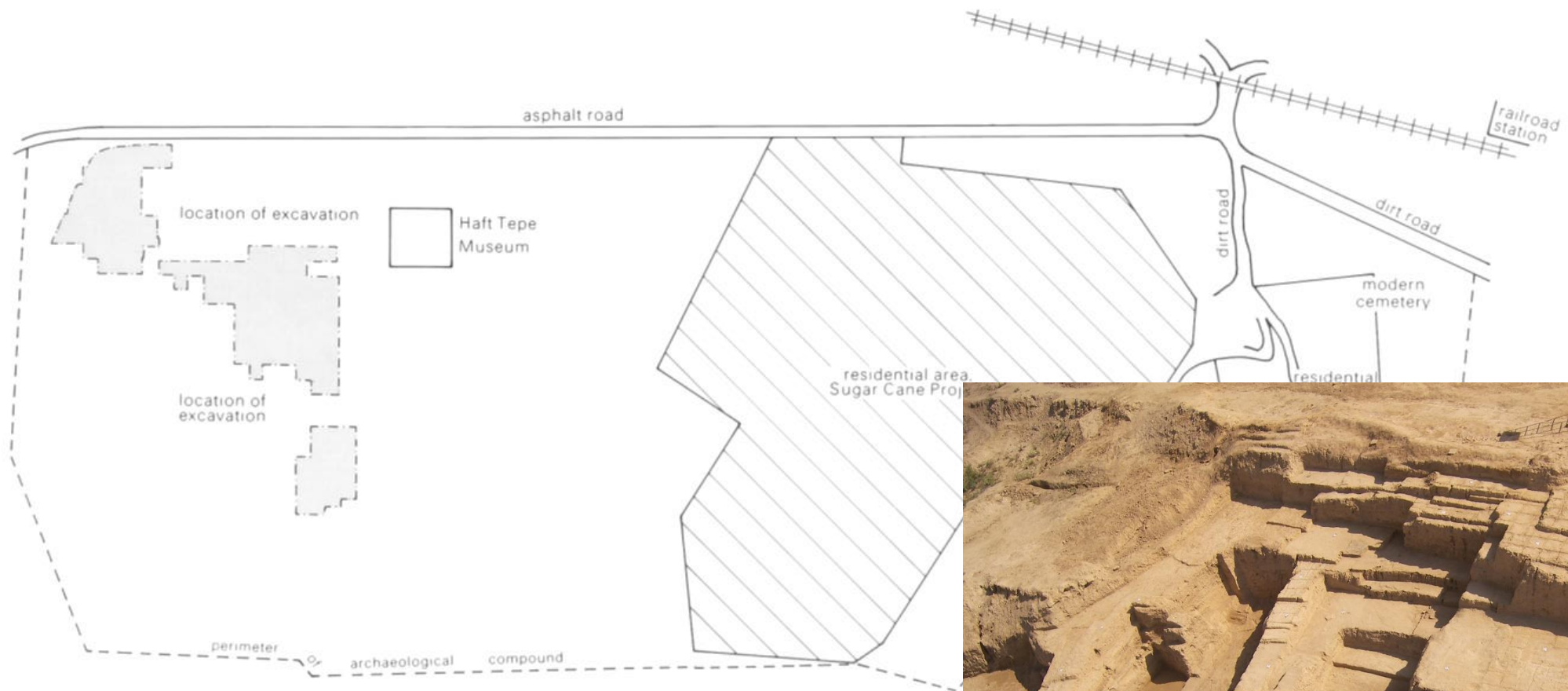


Ill. 14



4000 frammenti di tavolette cuneiformi (babilonese)

- Haft Tepe B sconosciuto: massiccia costruzione e tavolette.
- Niente dimostra una funzione domestica.
- “temple precinct”: ampio range di attività legate all’artigianato, inclusa la produzione ceramic, statuaria, e altro artigianato dedicato a produrre beni per le divinità, la classe sacerdotale e i dipendenti del tempio.
- Il tempio incorporava una scuola scribale (tavolette di esercitazioni) e un gruppo di scriba accanto a sacerdoti, alcuni dei quali erano esperti in aruspicina



HAFT TEPE
SITE LOCALITY

0 50 100 m.

N

