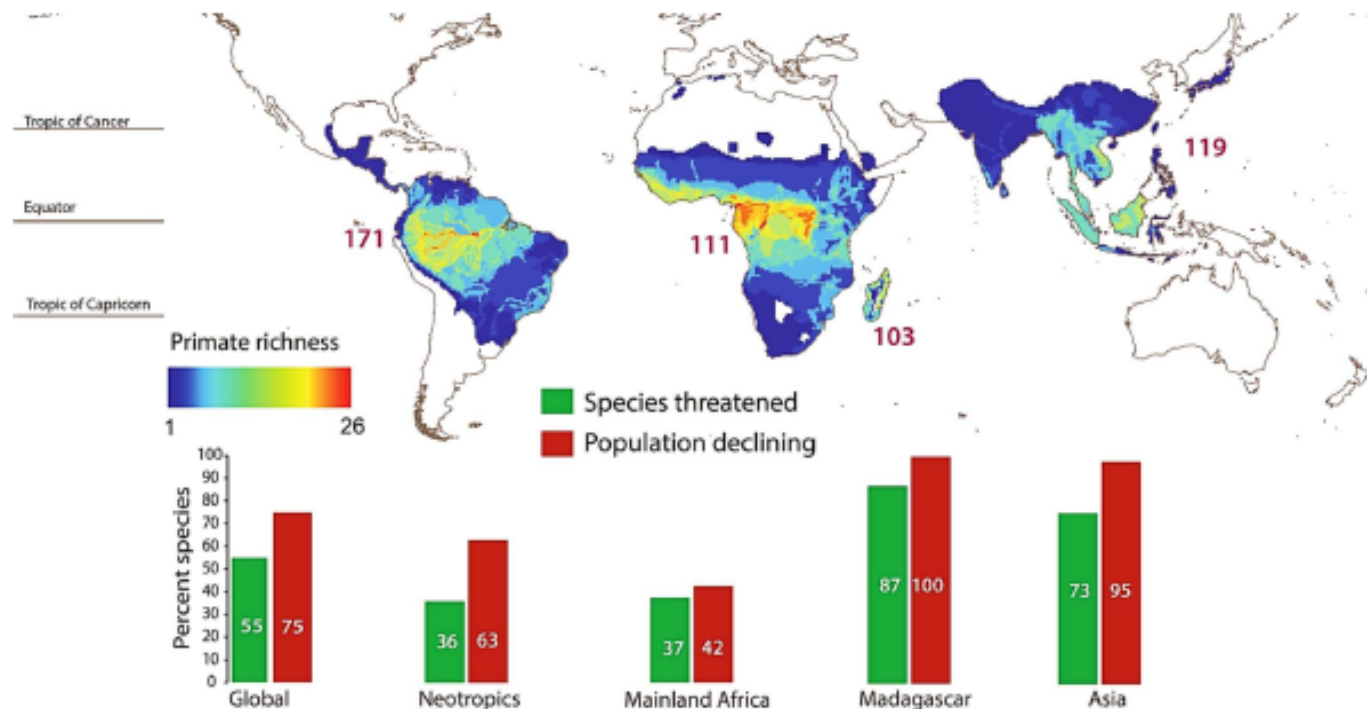


## BACKGROUND: *Biodiversity crisis in the tropics*

Biodiversity crisis calls for ecological data and monitoring to determine status and vulnerability and inform conservation management

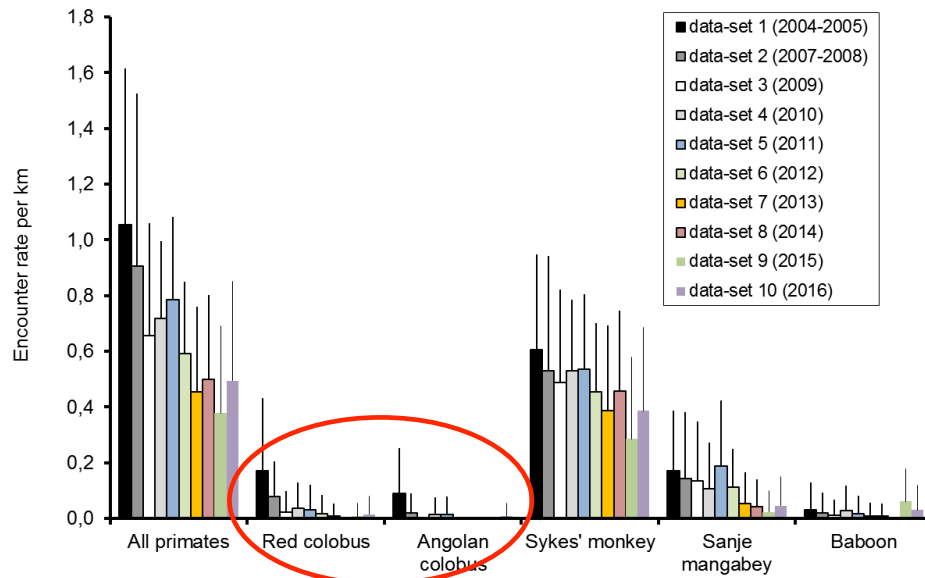
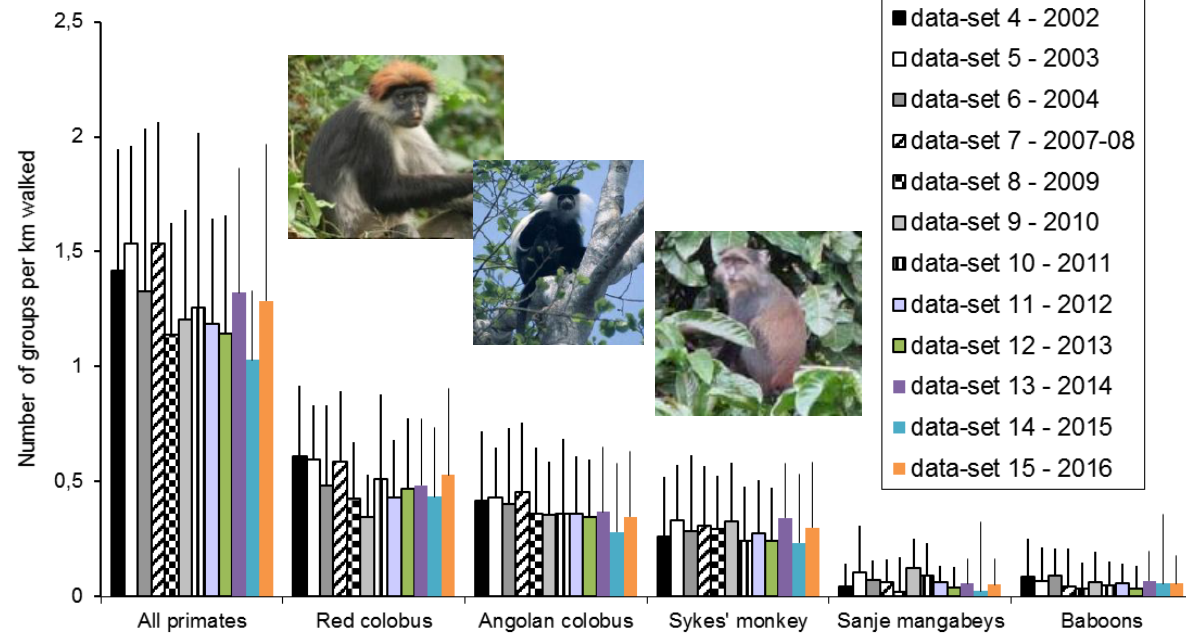
The example of primates: **75% of species are declining globally.**  
Assessing and monitoring vulnerability as a key conservation need



(Estrada et al. 2017, *Sciences Advances*)

# Udzungwa Primate Monitoring Programme

**Mwanihana forest:**  
(2002-2016)  
972 transect rep.  
>3,800 km walked

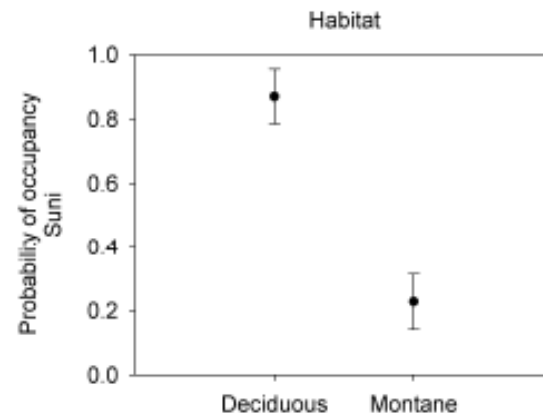
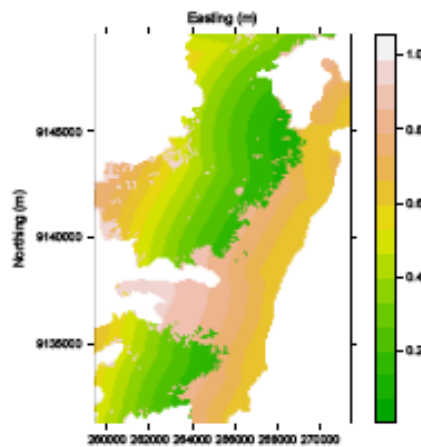


**Uzungwa Scarp:**  
(2004-2016)  
401 transect rep.  
>1,400 km walked

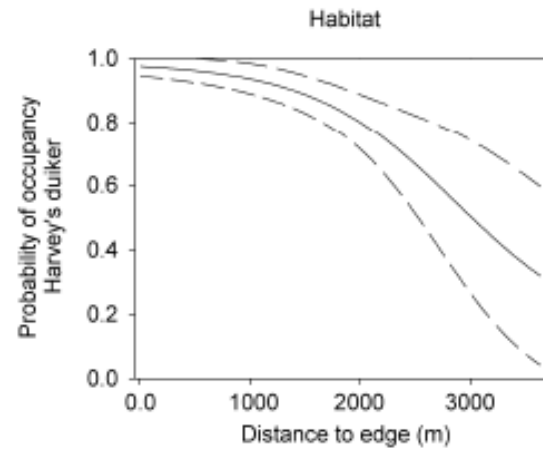
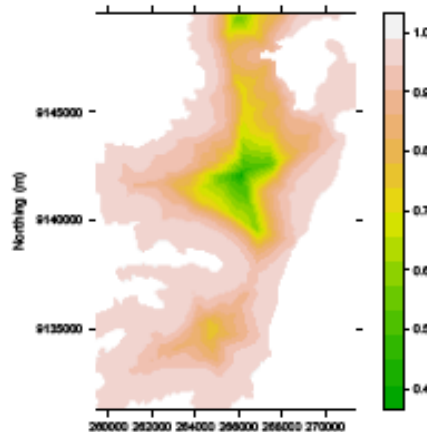
## ***Camera trapping for the study of elusive fauna***

---

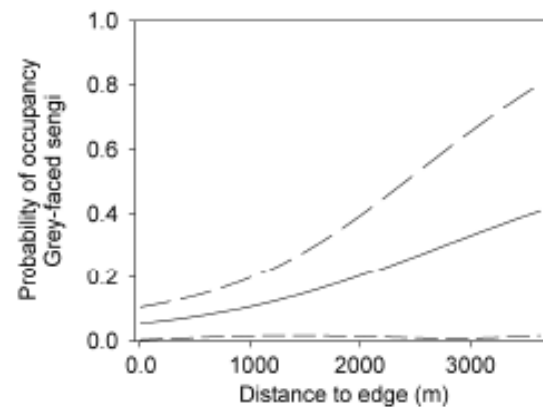
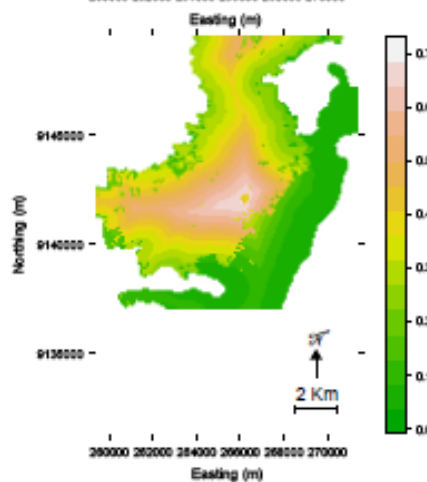




Lowland,  
deciduous  
forest dweller



Edge-lover



Forest interior  
dweller

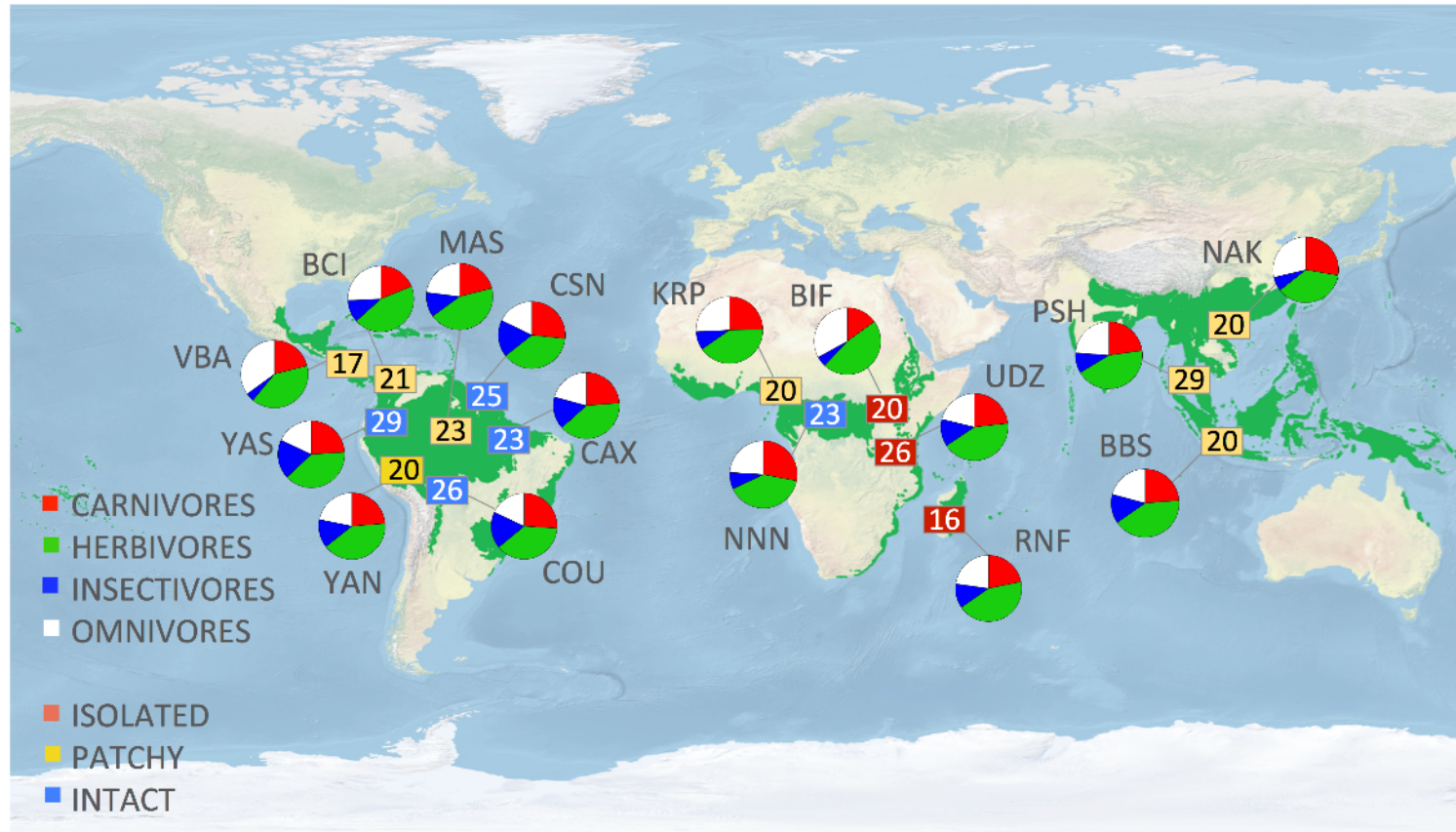


Rovero et al. (2014)



## TEAM Network: current analyses

Community structure of tropical forest mammals: evidence for consistency in composition of trophic guilds



Estimated proportions of four trophic guild richness on total richness. Numbers are observed richness.