

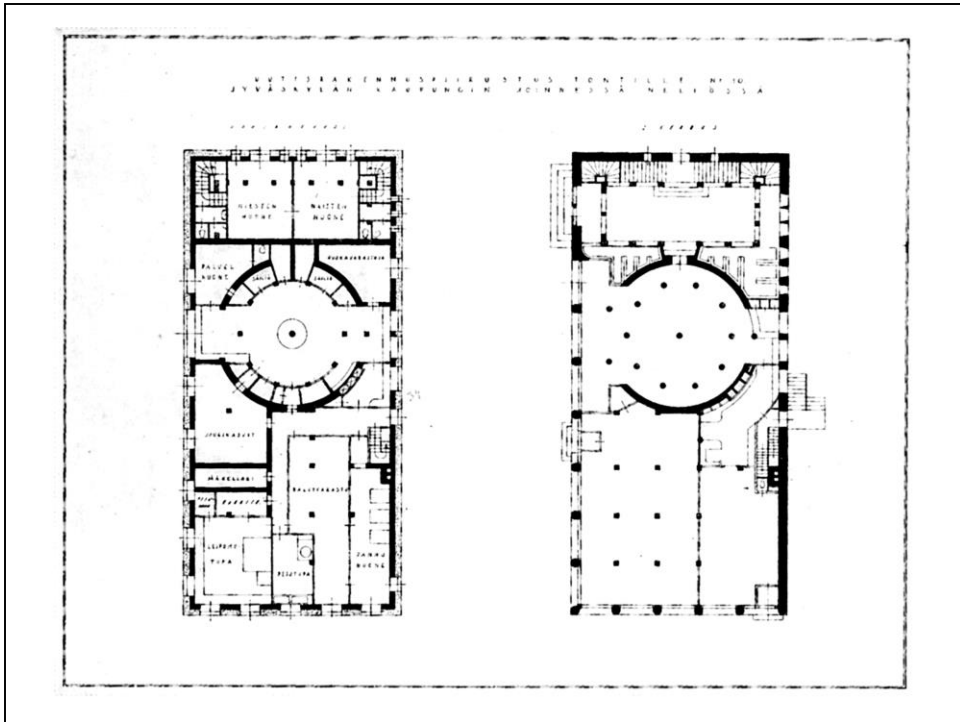
Alvar Aalto



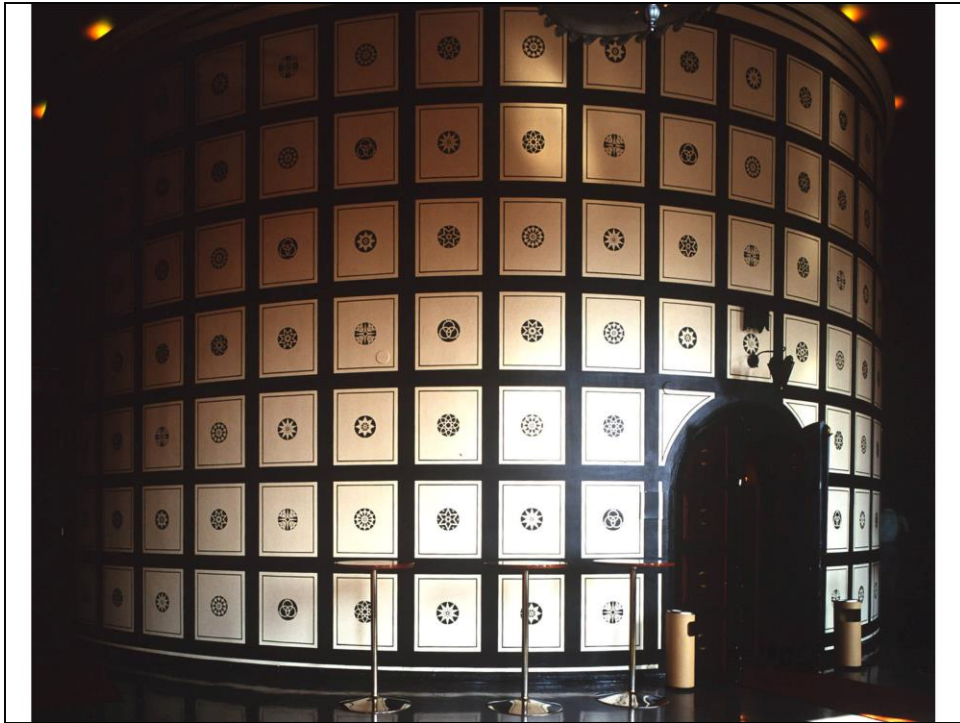
A. Aalto, Schizzo della basilica di San Marco a Venezia, 1924



A. Aalto, Club dei lavoratori di Jyväskylä, 1924



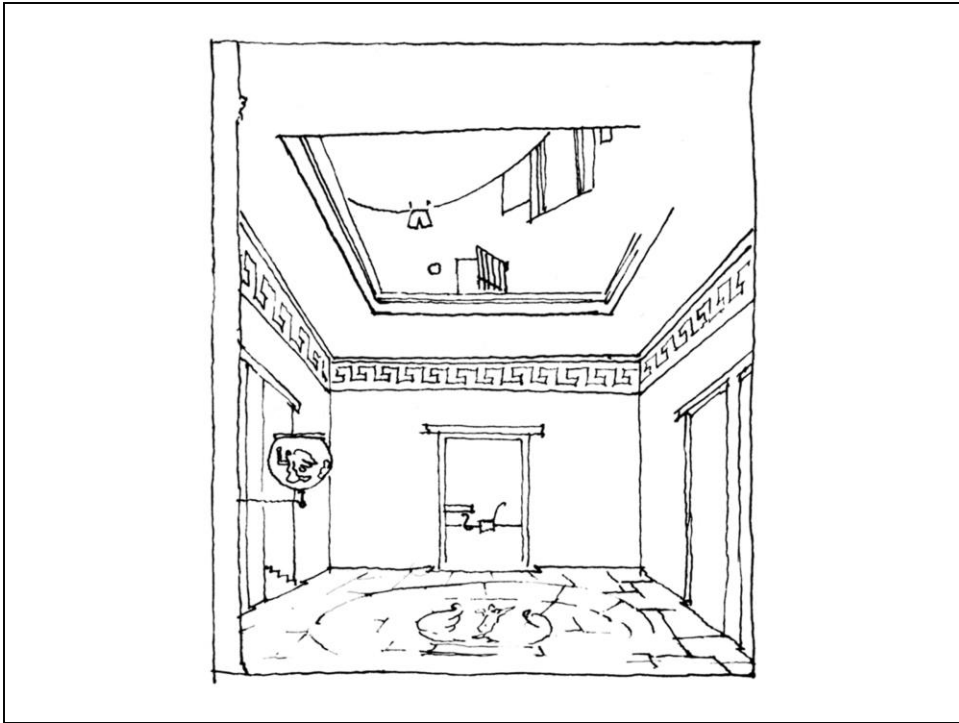
A. Aalto, Club dei lavoratori di Jyväskylä, 1924



A. Aalto, Club dei lavoratori di Jyväskylä, 1924



L.B. Alberti, Sacello del Santo Sepolcro, San Pancrazio, Firenze

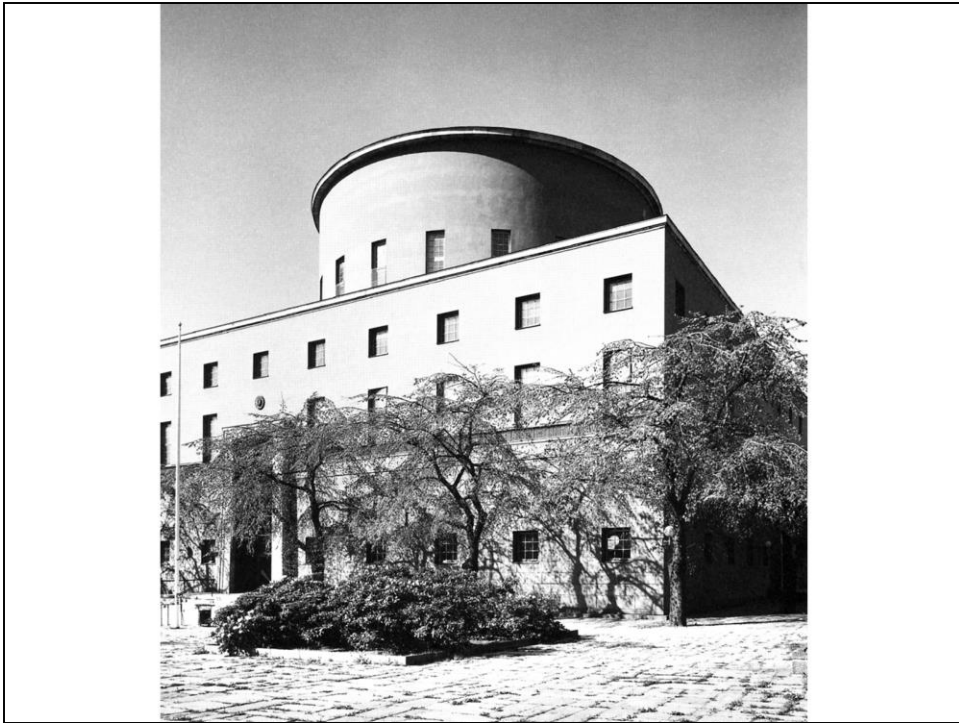


A. Aalto, Schizzo per il patio della casa del fratello Väinö, 1925

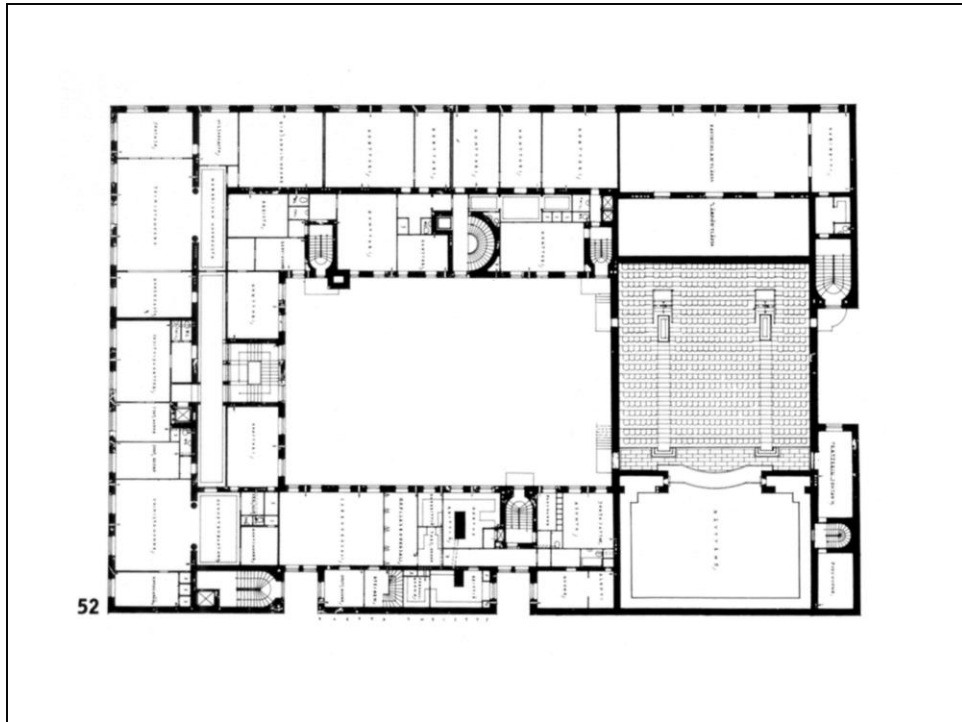


A. Aalto, Edificio della Cooperativa Agricola, Turku, 1927

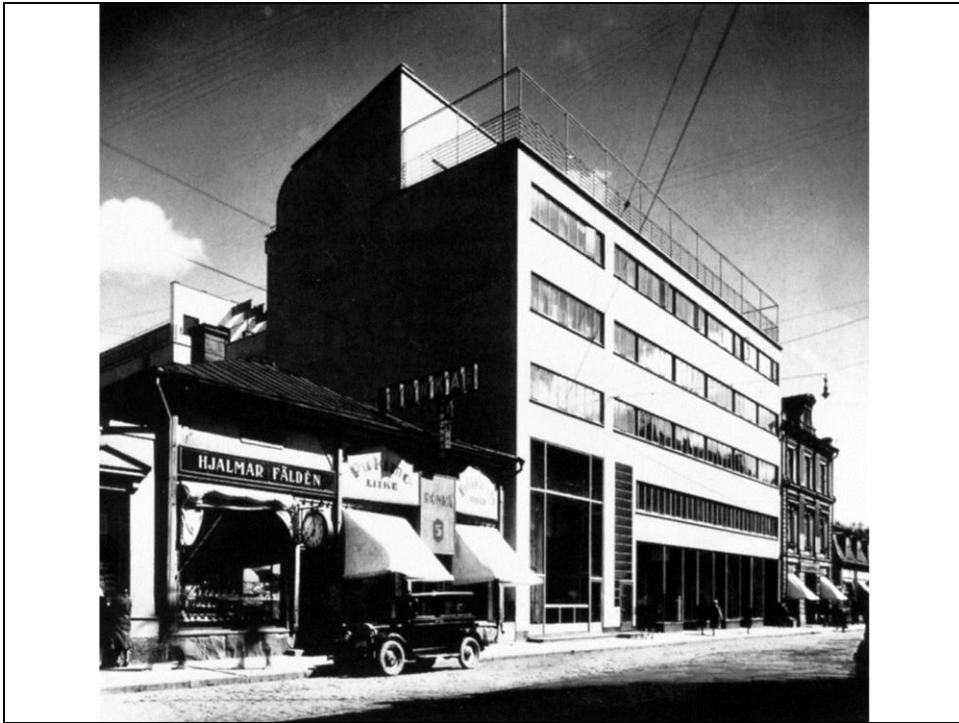




E.G. Asplund, Biblioteca comunale, Stoccolma (1924-27)



A. Aalto, Edificio della Cooperativa Agricola, Turku, 1927, pianta di uno dei piani superiori con a destra il teatro



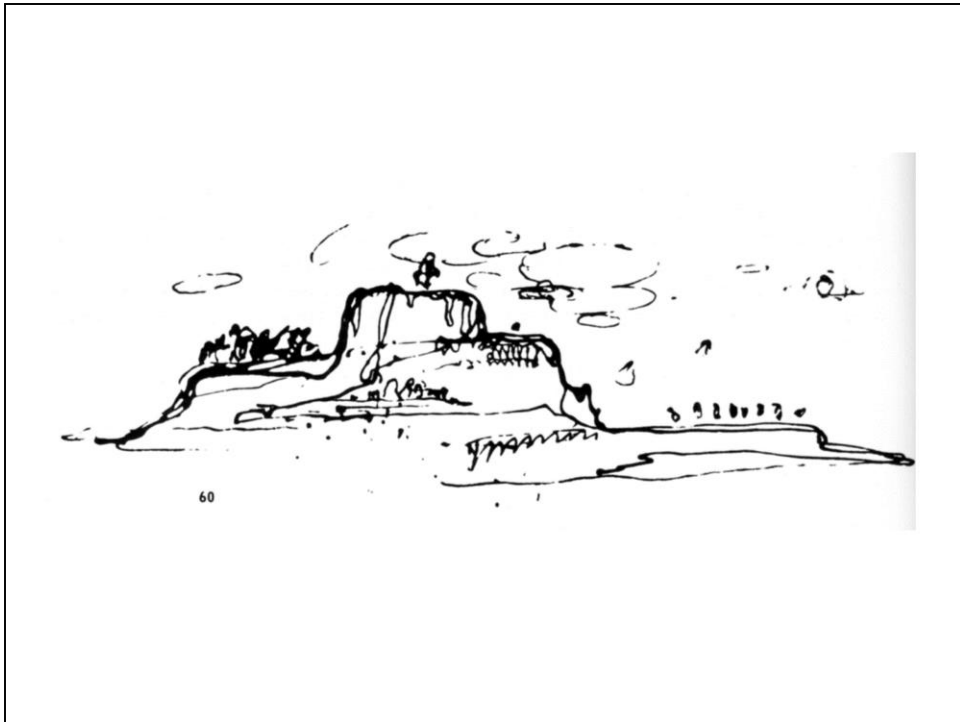
A. Aalto, Sede del Torun Sanomat, Turku, 1928



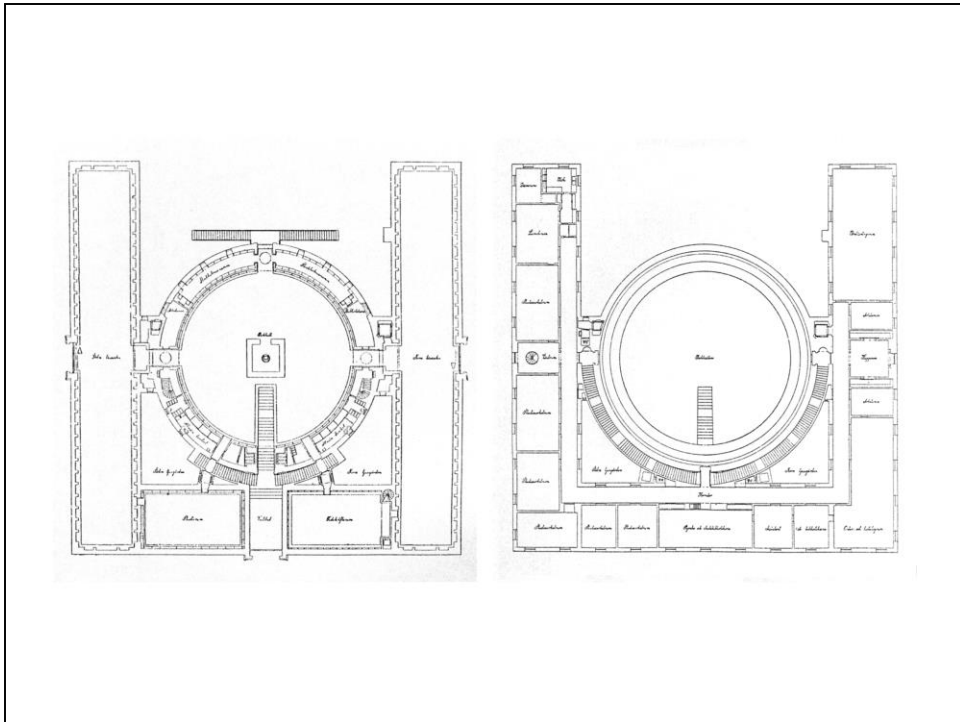
A. Aalto, Sede del Torun Sanomat, Turku, 1928



A. Aalto, Sede del Torun Sanomat, Turku, 1928



A. Aalto, schizzo per la biblioteca di Viipuri



E.G. Asplund, Biblioteca comunale, Stoccolma (1924-27)

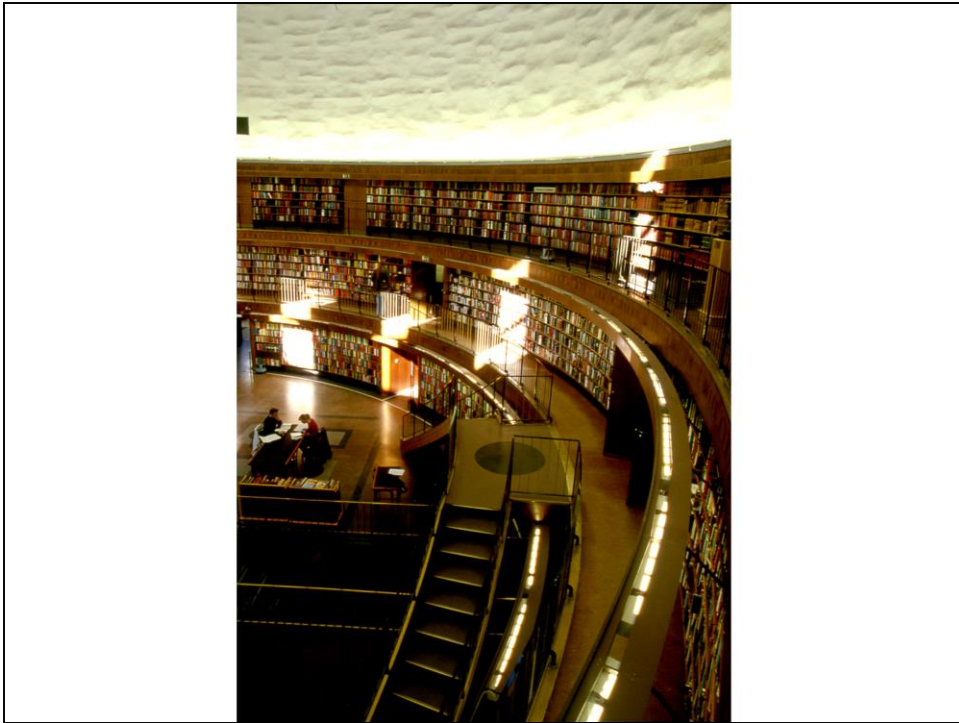


E.G. Asplund, Biblioteca comunale, Stoccolma (1924-27)





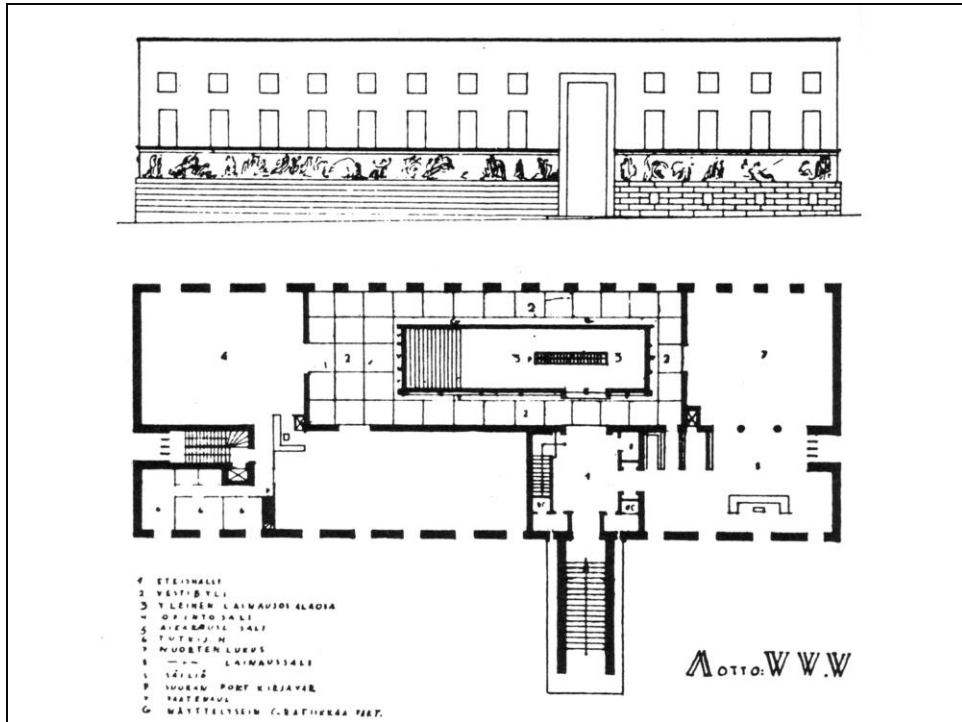
E.G. Asplund, Biblioteca comunale, Stoccolma (1924-27)



E.G. Asplund, Biblioteca comunale, Stoccolma (1924-27)



E.G. Asplund, Biblioteca comunale, Stoccolma (1924-27)



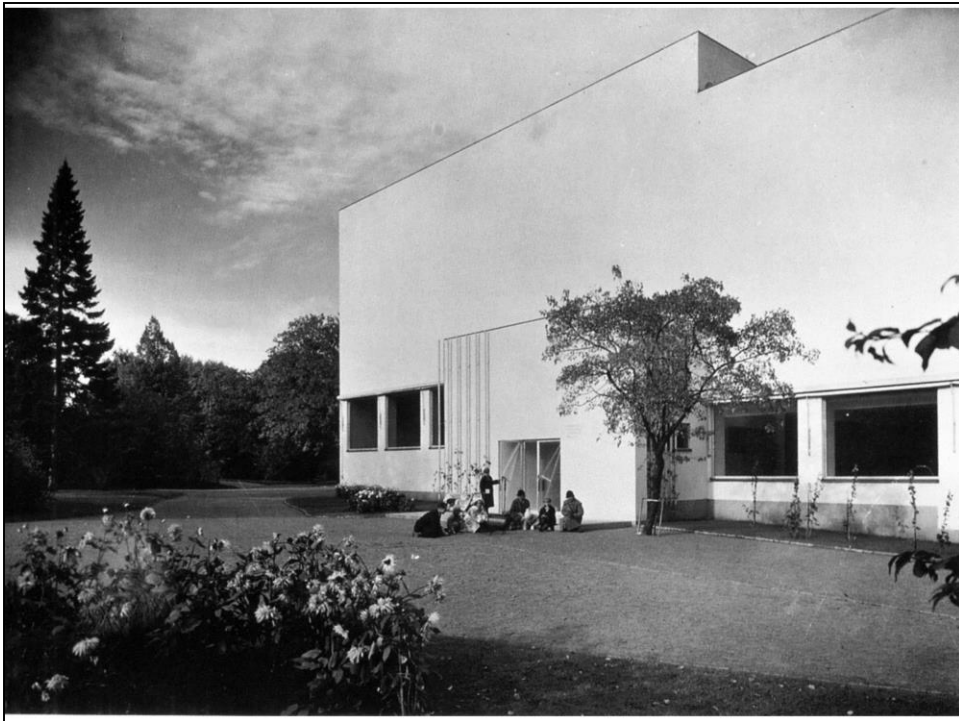
A. Aalto, Biblioteca, Viipuri (1927-35): progetto di concorso



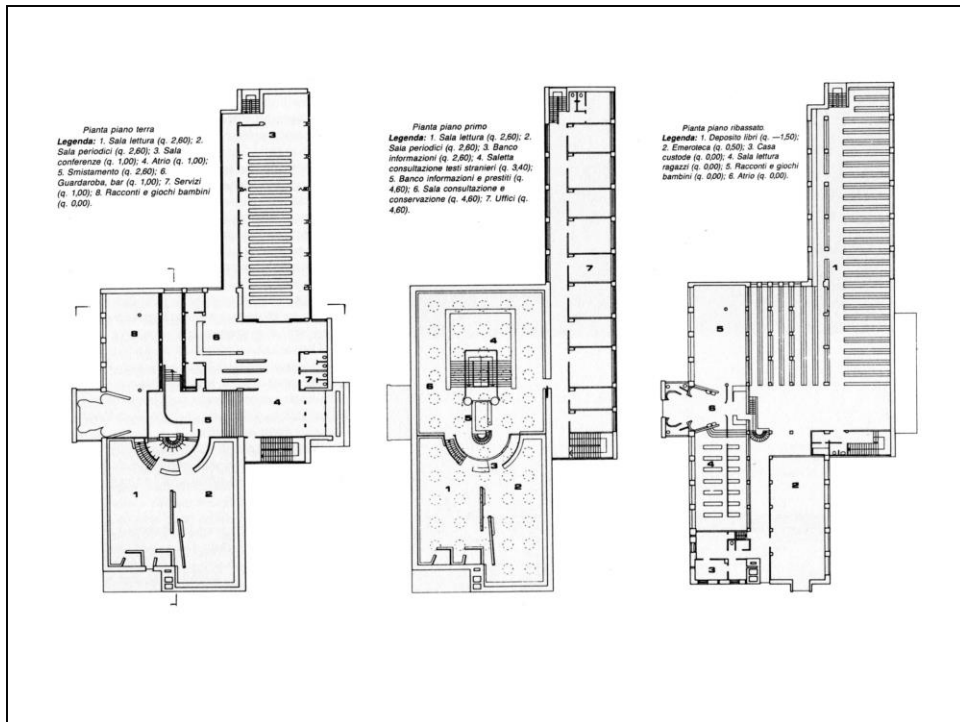
A. Aalto, Biblioteca, Viipuri (1927-35): prospetto d'ingresso



A. Aalto, Biblioteca, Viipuri (1927-35): prospetto posteriore



A. Aalto, Biblioteca, Viipuri (1927-35): l'ingresso alla biblioteca dei bambini

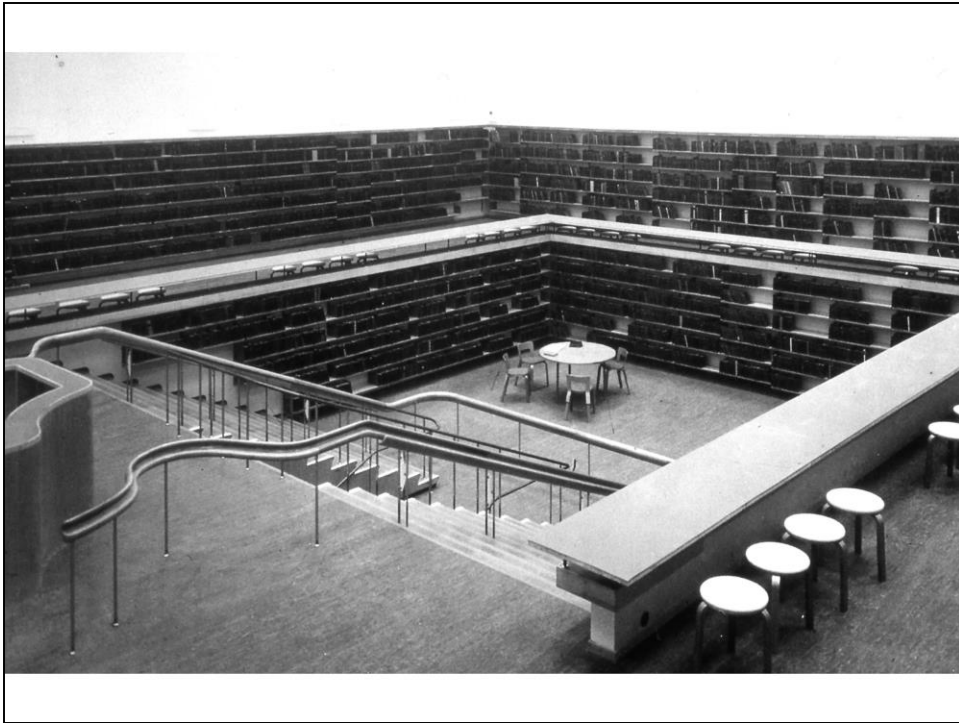


A. Aalto, Biblioteca, Viipuri (1927-35): piante del piano terreno (a sinistra), del primo piano (al centro) e del piano ribassato (a destra)

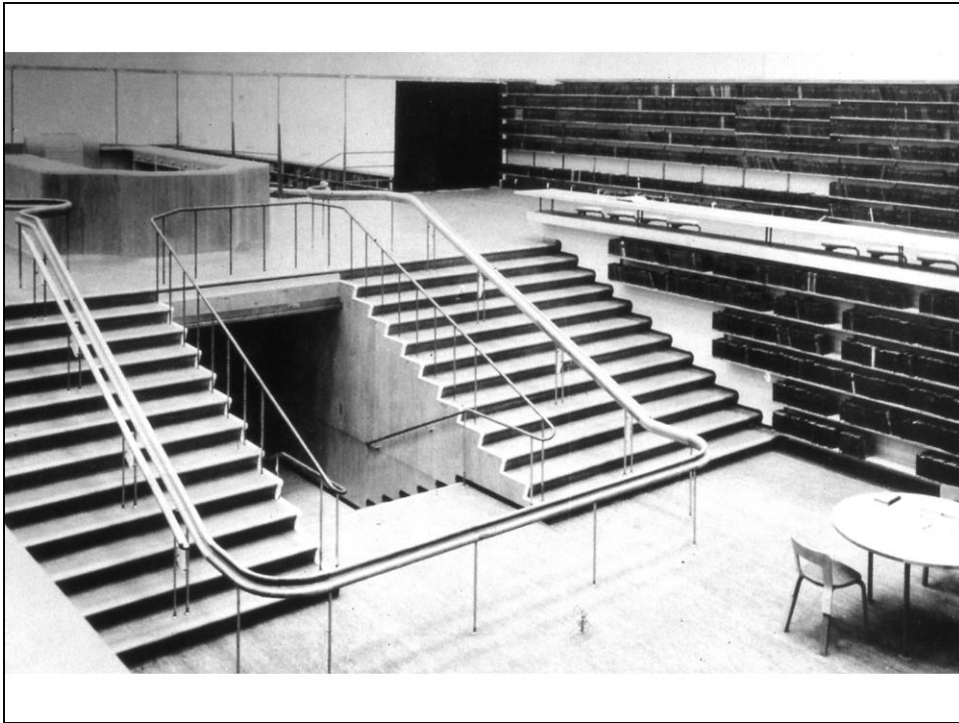




A. Aalto, Biblioteca, Viipuri (1927-35): atrio d'ingresso



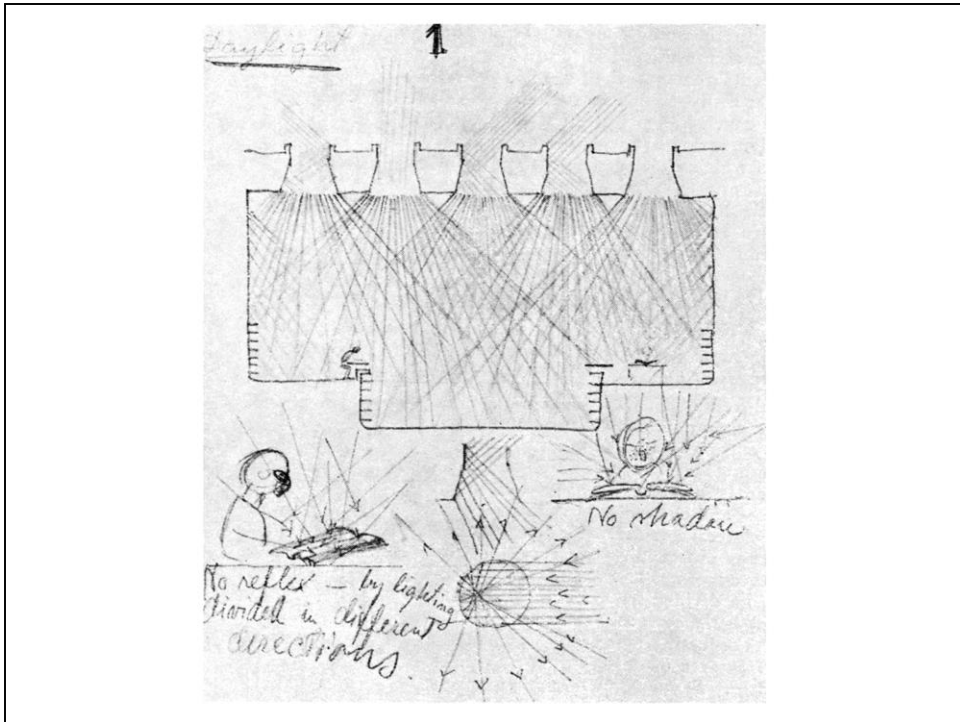
A. Aalto, Biblioteca, Viipuri (1927-35): sala di consultazione



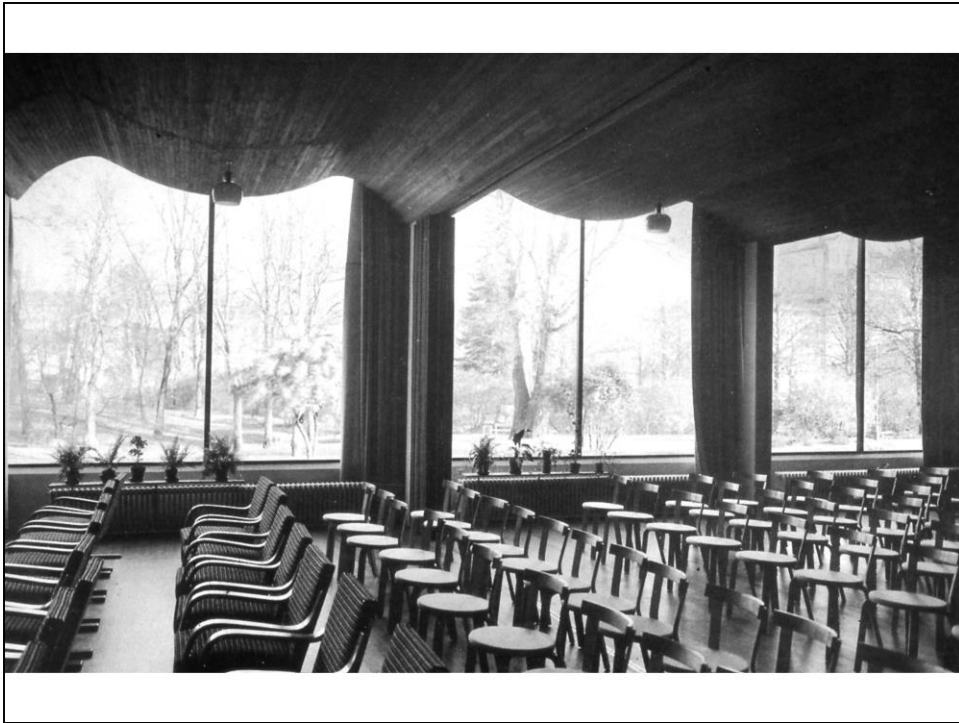
A. Aalto, Biblioteca, Viipuri (1927-35): sala di consultazione



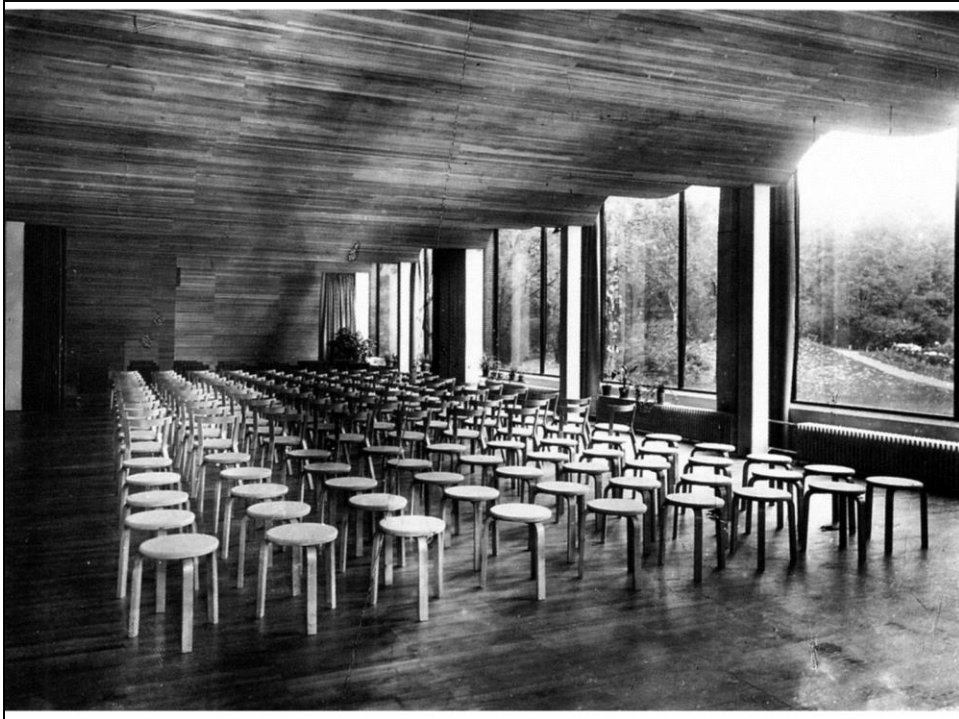
A. Aalto, Biblioteca, Viipuri (1927-35): sala di lettura



A. Aalto, schizzo per i lucernari della biblioteca di Viipuri



A. Aalto, Biblioteca, Viipuri (1927-35): sala per le conferenze

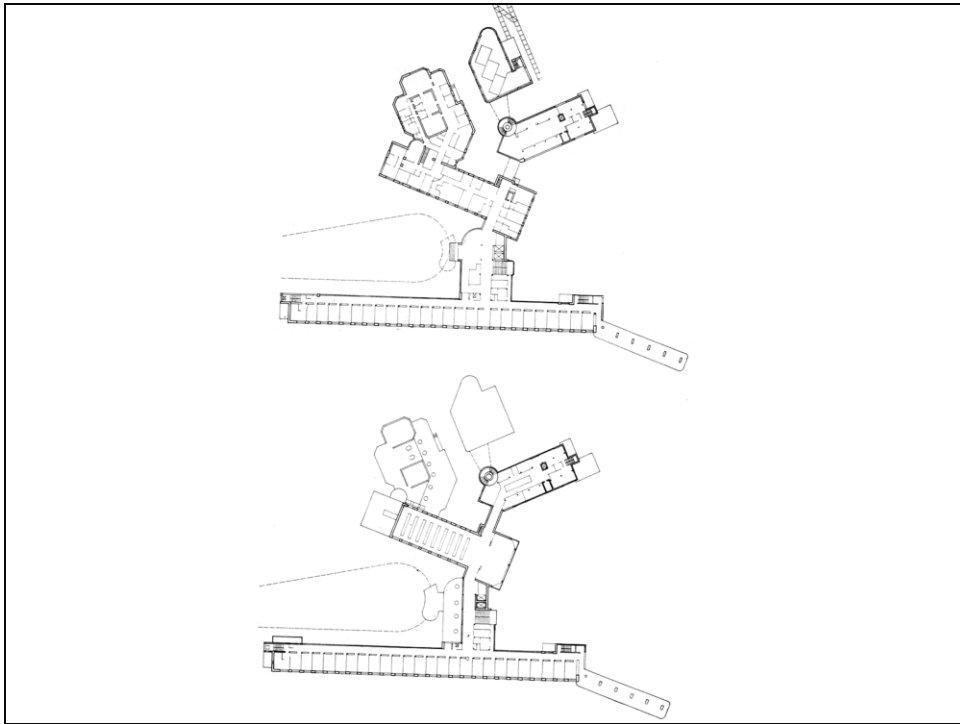


A. Aalto, Biblioteca, Viipuri (1927-35): sala per le conferenze



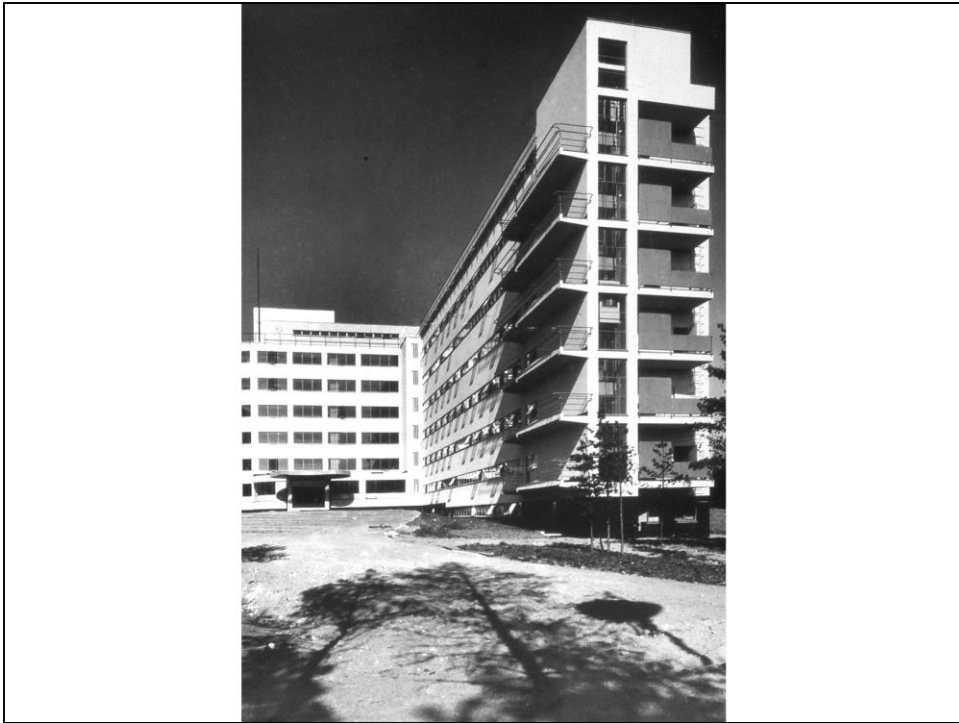
A. Aalto, Sanatorio, Paimio (1929-33)





A. Aalto, Sanatorio, Paimio (1929-33): piante del piano terreno (in alto) e del primo piano superiore (in basso)

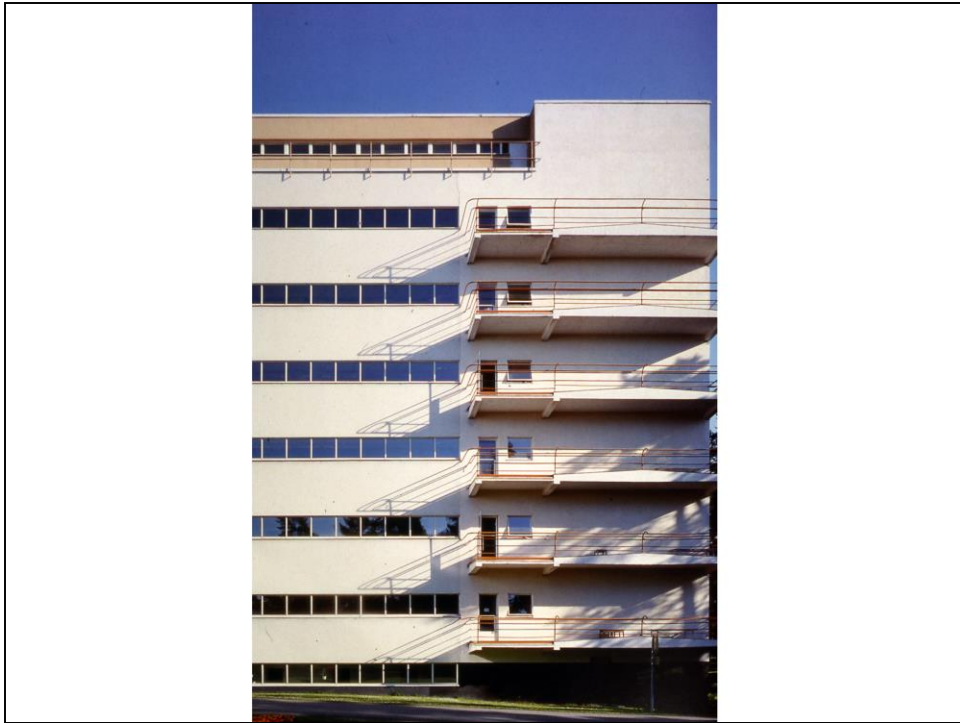




A. Aalto, Sanatorio, Paimio (1929-33): il corpo d'ingresso e quello delle degenze



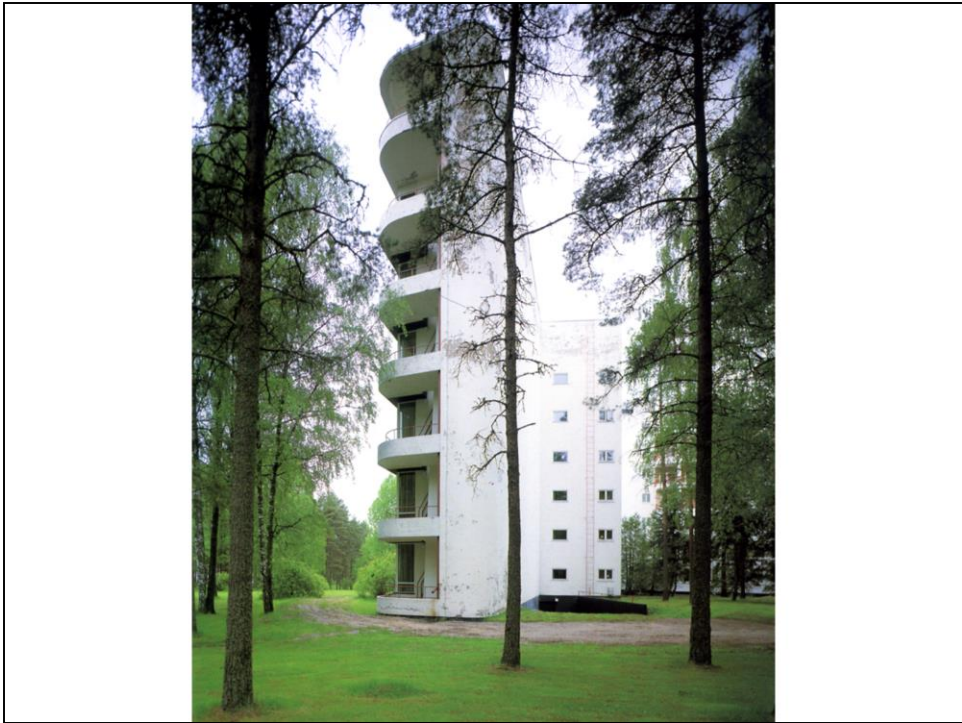
A. Aalto, Sanatorio, Paimio (1929-33): il corpo delle degenze



A. Aalto, Sanatorio, Paimio (1929-33): dettaglio del corpo delle degenze



A. Aalto, Sanatorio, Paimio (1929-33): il corpo delle degenze con l'ala per le cure elioterapiche

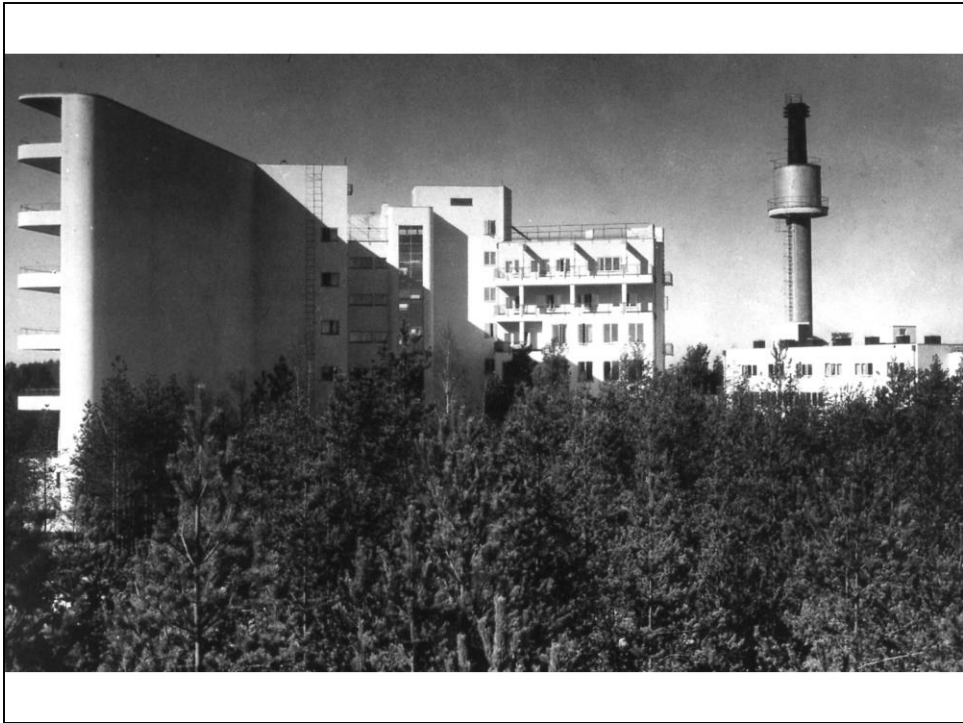


A. Aalto, Sanatorio, Paimio (1929-33)



A. Aalto, Sanatorio, Paimio (1929-33): il tetto-terrazzo del corpo per le degenze





A. Aalto, Sanatorio, Paimio (1929-33)



A. Aalto, Sanatorio, Paimio (1929-33)



A. Aalto, Sanatorio, Paimio (1929-33)



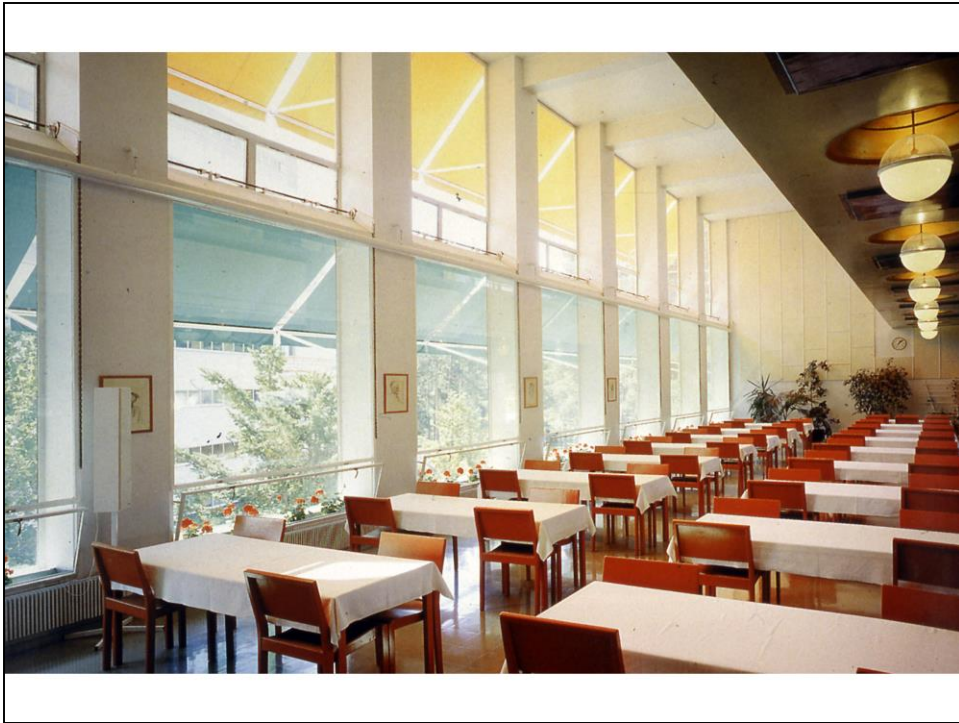
A. Aalto, Sanatorio, Paimio (1929-33): la hall d'ingresso



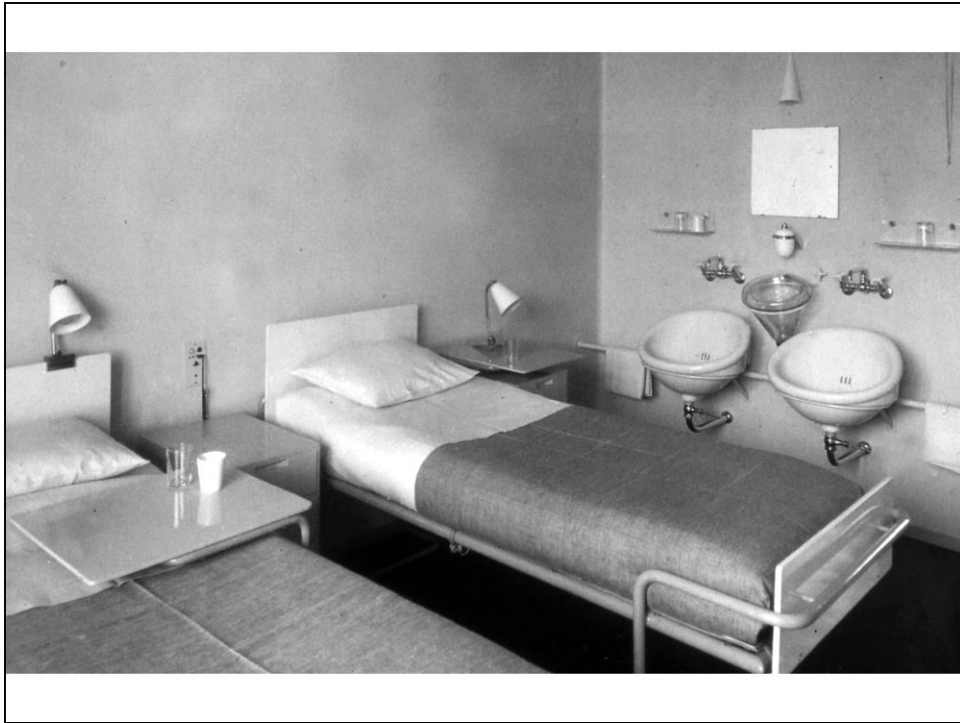
A. Aalto, Sanatorio, Paimio (1929-33): la hall d'ingresso



A. Aalto, Sedia per il sanatorio di Paimio (1930 ca.)

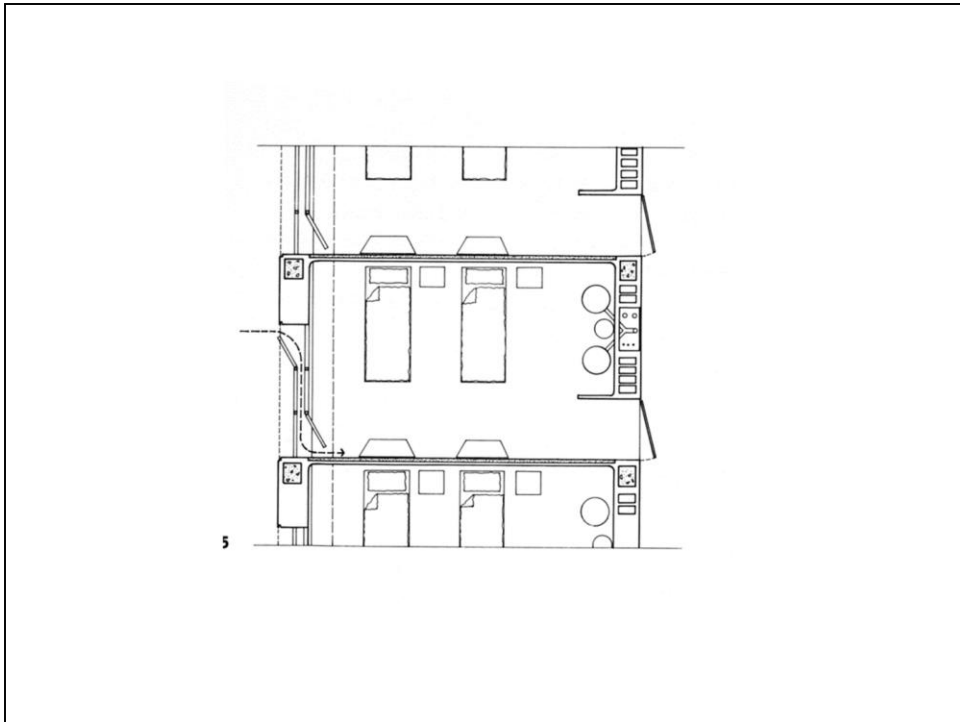


A. Aalto, Sanatorio, Paimio (1929-33): la mensa



A. Aalto, Sanatorio, Paimio (1929-33): camera di degenza





A. Aalto, Sanatorio, Paimio (1929-33): pianta di una camera di degenza



A. Aalto, Sanatorio, Paimio (1929-33): maniglia e lampada