

Neurobiology of resilience

Scott J Russo¹, James W Murrough^{1,2}, Ming-Hu Han^{1,3}, Dennis S Charney¹⁻³ & Eric J Nestler¹⁻³

Humans exhibit a remarkable degree of resilience in the face of extreme stress, with most resisting the development of neuropsychiatric disorders. Over the past 5 years, there has been increasing interest in the active, adaptive coping mechanisms of resilience; however, in humans, most published work focuses on correlative neuroendocrine markers that are associated with a resilient phenotype. In this review, we highlight a growing literature in rodents that is starting to complement the human work by identifying the active behavioral, neural, molecular and hormonal basis of resilience. The therapeutic implications of these findings are important and can pave the way for an innovative approach to drug development for a range of stress-related syndromes.

Over the past decade, there has been increasing attention paid to the phenomenon of resilience: the ability of most people, when exposed even to extraordinary levels of stress and trauma, to maintain normal psychological and physical functioning and avoid serious mental illness. Although resilience has been identified across the spectrum of psychiatric disorders, we focus here on resilience as it relates to post-traumatic stress disorder (PTSD) and major depressive disorder (MDD). In this context, resilience refers to the capacity of an individual to avoid negative social, psychological and biological consequences of extreme stress that would otherwise compromise their psychological or physical well being. Recent reports indicate that resilience in humans represents an active, adaptive process and not simply the absence of pathological responses that occur in more susceptible individuals^{1,2} (Fig. 1). The concept of resilience is difficult to operationalize, as it encapsulates many divergent behavioral phenotypes. Indeed, the study of human resilience is still a mostly phenomenological literature that has only begun to characterize biological factors in resilient individuals that are associated with more successful coping responses. As will be seen, most of these studies have focused, by necessity, on peripheral neuroendocrine changes that are predictive of resilience or on genetic variations that are linked—albeit still preliminarily—with resilient outcomes.

Over the past ~5 years, neural and molecular mechanisms related to stress resilience have been investigated in laboratory animals. This work has provided more causal information about neuroadaptations in brain and their neuroendocrine output that contribute to resilience (Fig. 1). Work has demonstrated that such resilience—the ability to avoid deleterious behavioral changes in response to chronic stress—is mediated not only by the absence of key molecular abnormalities that occur in susceptible animals to impair their coping ability, but also by the presence of distinct molecular adaptations that occur specifically in resilient individuals to help promote normal behavioral function. The former can be seen as

mechanisms of passive resilience, the latter as mechanisms of active resilience. Certain active resilience mechanisms have been shown to counteract maladaptive molecular changes seen in susceptible animals, thus providing mechanistic insight into the biological basis of active coping.

Here we review the evolving biological understanding of resilience by integrating findings from humans and animals and identify key areas for future investigation. We emphasize known active processes correlated with resilience in humans and provide newer evidence in rodent models for the molecular and cellular mechanisms that underlie active resilience, though we do not attempt to review the vast literature of stress-induced changes that have not been explicitly related to active resilience *per se*. Finally, we discuss how this growing body of knowledge can guide the development of treatments for a range of stress-related disorders by enhancing such natural mechanisms of resilience.

Neuroendocrine findings in human resilience

Hypothalamic-pituitary-adrenal (HPA) axis. A principal mediator of the impact of stress on brain and behavior is activation of the HPA axis, which results in widespread hormonal, neurochemical and physiological alterations³. Glucocorticoids, released from the adrenal cortex as a consequence of HPA axis activation, interact with steroid receptors expressed throughout brain that function primarily as transcription factors to regulate cellular function beyond the time scale of acute stress effects. In particular, glucocorticoid receptors and mineralocorticoid receptors, which also respond to glucocorticoids, are expressed at high levels in hippocampus, amygdala, prefrontal cortex (PFC) and other limbic and midbrain structures, where they modulate the neural circuitry and neuroendocrine systems that underlie behavioral responses to stress.

The effects of stress on the HPA axis depend on the developmental timing of the stress, as well as other critical factors such as stress magnitude, type and duration (see “stress inoculation” and “stress mastery” below). Most research on the effects of stress on HPA axis function in humans has concentrated on MDD and PTSD. Many studies have reported elevated blood glucocorticoids in roughly two-thirds of individuals with MDD, although a smaller subset of depressed individuals show reduced glucocorticoid levels and typically display less severe symptoms⁴. Hypocortisolemia has been reported widely in PTSD; here too, however, the findings have been mixed⁵.

¹Department of Neuroscience, Friedman Brain Institute, Mount Sinai School of Medicine, New York, New York, USA. ²Department of Psychiatry, Friedman Brain Institute, Mount Sinai School of Medicine, New York, New York, USA.

³Department of Pharmacology and Systems Therapeutics, Friedman Brain Institute, Mount Sinai School of Medicine, New York, New York, USA. Correspondence should be addressed to S.J.R. (scott.russo@mssm.edu).

Received 6 June; accepted 11 September; published online 14 October 2012; doi:10.1038/nn.3234

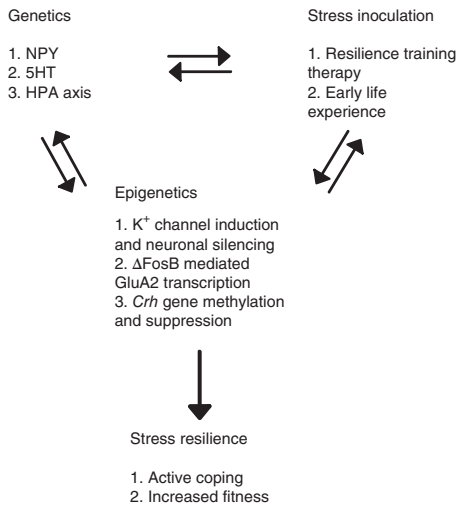


Figure 1 Schematic of gene × environment interactions that promote resilience. The scheme describes how behavioral strategies through stress inoculation can interact with an individual’s genetic constitution to control expression of key genes, via epigenetic processes, in the brain’s limbic regions to mount active, adaptive molecular and cellular changes that mediate resilience.

The variable findings of glucocorticoid levels in MDD and PTSD have posed challenges for understanding the role of the HPA axis in risk or resistance to the development of stress-related disorders. Indeed, the distinction between MDD and PTSD is not clear—there are no objective biological measures that differentiate these syndromes—and stress exposure and adverse life events are important risk factors for both disorders. Increased cerebrospinal fluid levels of corticotropin-releasing hormone (CRH) have been documented more generally in adults who report a history of childhood abuse⁶ and thus do not always correlate with the development of MDD or PTSD^{7,8}. Although the HPA axis is central to normal stress responses, the relationship between HPA axis function and resilience to stress-related affective illness is still unclear. Recent studies suggest that exogenous glucocorticoid replacement can protect against PTSD in trauma-exposed humans; it is unknown, however, whether this mechanism occurs naturally to promote stress resilience. Nevertheless, as will be seen below, human and animal studies have recently identified active biological responses that can blunt stress-induced HPA activation to promote resilience.

Dehydroepiandrosterone (DHEA). DHEA is a precursor for the synthesis of anabolic steroids and is released with cortisol (or corticosterone, in rodents) from the adrenal cortex in response to stress. It may also act directly on several steroid hormone receptors. Although the physiological consequences of DHEA are not completely understood, DHEA might counter the actions of cortisol as well as exert antioxidant and anti-inflammatory effects. Studies have shown that blood DHEA increases under acute stress and that higher DHEA, or a higher DHEA-to-cortisol ratio, is associated with fewer dissociative symptoms and superior performance in healthy subjects undergoing military survival training⁹.

Initial research in PTSD supported the hypothesis that DHEA or the DHEA-to-cortisol ratio may represent a resilience factor. It has been reported that DHEA responses to adrenocorticotropic hormone (ACTH) are elevated in PTSD and negatively correlate with the severity of symptoms, suggesting that DHEA release during stress may buffer the severity of PTSD⁹. Consistent with this interpretation, a separate study reported that DHEA is elevated in PTSD but that

higher levels correlate with symptom improvement and better coping, whereas a lower DHEA-to-cortisol ratio correlates with greater severity of PTSD symptoms¹⁰. However, a contrary report linked elevated DHEA to increased suicidality in male veterans with PTSD¹¹, and an initial randomized trial of DHEA supplementation in men undergoing military survival training was negative¹². Future work is therefore needed to determine whether DHEA is indeed a causative factor in positive coping.

Testosterone. Testosterone has been strongly linked to social rank and aggression. In both men and woman, testosterone increases in winners after an athletic competition, and, on average, athletes with higher saliva testosterone have higher rankings within the team¹³. Testosterone also positively correlates with the degree of social connectedness with teammates, greater feelings of personal success and dominance¹⁴. However, more causative studies are needed to demonstrate this definitively. Given its role in social behavior and positive mood, it is not surprising that blood and saliva testosterone levels decrease following stress¹⁵ and that low circulating levels are often found in individuals with PTSD or MDD^{16,17}. Early studies in men suggest that testosterone may be effective in treatment-resistant depression and as an adjunct to treatment with selective serotonin reuptake inhibitors¹⁷. Although much future work is needed, testosterone may serve as a pro-resilience factor by promoting positive mood and social connectedness.

Neuropeptide Y. Neuropeptide Y (NPY), a peptide neurotransmitter, modulates stress responses in animals, and studies in humans support the possibility that NPY may represent a protective factor in the face of stress^{18,19}. In one study, higher blood NPY levels were shown to predict better performance under stress during military survival training in Special Forces soldiers, compared to their non-Special Forces military counterparts¹⁸. A follow-up study reported that higher levels of NPY in response to acute stress predict less psychological distress and fewer symptoms of dissociation¹⁹. These studies suggest that NPY is protective under conditions of high stress, which is consistent with tentative human genetic studies that weakly implicate variations in the *NPY* gene in emotional behavior and stress responses (discussed below)^{20,21}.

Early genetic findings in human resilience

Genetic factors are important determinants for the risk or resilience to psychiatric disorders. Most work thus far has focused on candidate genes with relatively weak associations reported. Some recent examples of genes related to the HPA axis, serotonergic systems or neuropeptide Y that show weak to moderate associations with resilient phenotypes are listed in **Table 1**. The field is now moving increasingly to genome-wide studies on large numbers of people to parse the complex genetic contributions to mood or anxiety disorders. We anticipate productive results in the coming years as the genetic basis of resilience becomes better understood.

Animal models of resilience

Definition of resilience in animals. As with humans, chronic stress leads to the development of depression- or anxiety-like behaviors in only a subset of laboratory animals^{22–27}. The remaining animals, which have been termed resilient in some studies, usually exhibit some deleterious symptoms in response to the stress but do not exhibit deficits in key behavioral domains. For example, following chronic social defeat stress, all genetically inbred C57BL/6/J male mice exhibit a constellation of symptoms that include heightened reactivity

Table 1 Early genetic findings in resilience

Genetic findings	Function in resilience	Refs.
<i>FKBP5</i> , encoding a glucocorticoid receptor heterocomplex co-chaperone	Four SNPs increase PTSD risk in children experiencing severe abuse	95
<i>ADCYAP1R1</i> , encoding pituitary adenyl cyclase-activating polypeptide (PACAP)	SNP-associated lower levels of PACAP and rates of PTSD in women	96
<i>CRHR1</i> , encoding CRH receptor-1	Three SNPs associated with lower rates of MDD in women reporting childhood abuse	97
<i>SLC6A4^{LRP}</i> , encoding the serotonin transporter	Variable reports that the short allele is associated with negative emotions and vulnerability to stress-related disorders Long allele associated with higher levels of resilience as measured by self report	98,99
<i>NPY</i> , encoding neuropeptide Y	Long-form variant related to reduced PTSD susceptibility and negative emotional states in MDD	20,100

SNP, single-nucleotide polymorphism.

of the HPA axis, deficits in exploratory-based behavior that are interpreted as increased anxiety, and stress-induced polydipsia²⁴. However, ~35% of the stressed mice, considered 'resilient', do not exhibit social avoidance, hyperthermia elicited by social interactions, anhedonia-like symptoms (reduced interest in sucrose, high-fat food or sex) or a metabolic syndrome characterized by overeating, obesity and central leptin resistance^{24,28}. Using this classification, resilient animals are not devoid of symptoms and, in fact, exhibit some behavioral adaptations that appear maladaptive, but they exhibit clear resistance to many other maladaptive sequelae of the chronic social stress.

Other stress paradigms have been used to study resilience in animals. It has long been known that inbred rodents subjected to learned helplessness models display a range of responses. Depending on the severity and duration of exposure to inescapable foot shock, a subset of animals, ~30% in some studies, develop learned helplessness—they fail to escape when escape becomes possible—whereas another subset (termed resilient) escapes with latencies seen in unstressed animals²⁹. Maier and colleagues view the risk of learned helplessness to be highly dependent upon the animal's own control over the stress, with resilience promoted by control over cessation of the stress (for review, see ref. 30). Cohen *et al.*²³ recently used a predator odor to induce a stress response and then classified rats into three groups: one-third each that was extremely disrupted, partially disrupted or minimally disrupted. The classifications were based largely on the number and type of behavioral deficits and the degree of change in brain NPY levels. The animals classified as extremely disrupted exhibited anxiety-like behaviors and increased acoustic startle responses, as well as large reductions in NPY across multiple brain regions. Both the partially and minimally disrupted groups exhibited mixed deficits within these domains. In another recent study, Delgado *et al.*²⁶ used a chronic mild stress (CMS) paradigm (where rats were exposed to varying physical and psychosocial stresses) and defined resilient animals as those that did not exhibit significant anhedonia measured by reduced sucrose consumption. This form of stress induced anhedonia-like symptoms in 70% of exposed rats. The researchers went on to use structural magnetic resonance imaging (MRI) and spectroscopy to show that CMS did not reduce hippocampal volume or alter glutamate metabolism in resilient mice, as seen in susceptible mice.

An equally important literature has focused on strain differences in relative risk or resilience, studies that have shed light on potential genetically controlled traits that make an animal more susceptible or less susceptible to stress. In the social defeat stress model, the relative distribution of resilience differs across mouse strains. For example,

10 d of social defeat in C57BL6/J mice results in ~35% resilient mice, whereas other strains such as CD1 or FVB are closer to 100% resilient²⁷. These ratios are also a function of the severity and duration of the defeat episodes. In a related study, Vidal *et al.*³¹ found that better coping strategies might make Sprague-Dawley rats more resilient to social defeat stress than Wistar rats as measured in fear- and anxiety-based domains. There are also strain-dependent responses to other physical stressors such as restraint or CMS, underscoring the role of complex genetics in regulating risk and resilience to chronic stress^{32–34}.

The central question concerning all animal studies of resilience is how they relate to resilience as defined in humans. As seen from

the above examples, the definition of resilience and the percentage of animals exhibiting resilience varies across several stress paradigms. Most studies of resilience have focused on the absence of some behavioral or molecular abnormality in a subset of stressed animals and work has only more recently turned to more active mechanisms of resilience—protective changes that occur in resilient individuals. The crucial criterion for defining resilience in animals, however, as noted earlier, is the ability to avoid some or all of the deleterious behavioral effects of chronic stress. The ability to avoid such deleterious consequences of stress in turn depends on both passive and active resilience mechanisms. Experimentally, it is thus essential to evaluate whether the absence (passive mechanism) or presence (active mechanism) of a given stress-induced molecular, cellular or circuit change exerts a positive effect on the animal's behavior; that is, whether it makes the animal less prone to exhibit maladaptive behavioral traits. Such a definition would be analogous to those in the Diagnostic and Statistical Manual of Mental Disorders IV (DSM-IV), where behavioral symptoms reach threshold for diagnosis only when they cause significant distress or impairment in the individual's ability to function. Even this is complex, as there is an ongoing debate that questions whether anxiety and depression symptoms are maladaptive from an ethological perspective or whether they serve an evolutionary purpose, such as avoiding threats or reducing expenditure of resources³⁵.

Our group has defined resilience to chronic social defeat stress as the absence of social avoidance, anhedonia and metabolic syndrome, which are highly correlated with one another^{24,27,28,36}. The anhedonic and metabolic symptoms are maladaptive and, indeed, are reversed by chronic administration of antidepressants to susceptible mice^{36,37}. Interpretation of social avoidance is more complicated, even though it too is reversed by chronic antidepressant treatment, as one could argue that avoiding an unfamiliar mouse after 10 d of aggressive encounters is adaptive, not maladaptive. However, we have shown that susceptible mice also avoid nonaggressive C57BL6/J littermates and that such social avoidance is essentially permanent—it persists for >6 months—despite housing with nonaggressive littermates, suggesting that it does reflect a maladaptive response^{36,38}. Therefore, when defining resilience in nonhuman species, it is essential to use a nuanced definition, considering not only the presence or absence of depression- or anxiety-like behaviors, but also their ethological relevance to the psychological and physical health of the organism. In the following sections, we highlight recent work that has begun to identify active, adaptive coping mechanisms—behavioral, neural, molecular and hormonal—that promote such behavioral resilience.

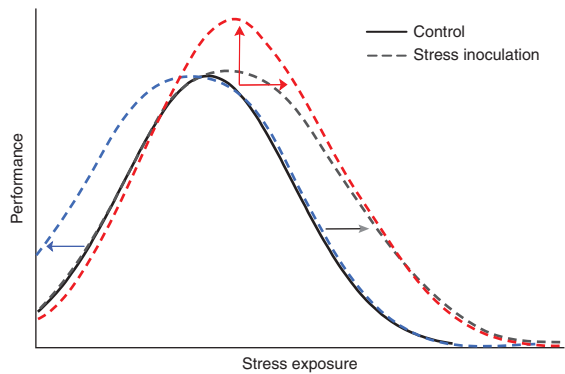


Figure 2 Stress inoculation shifts the inverted U-shaped curve to promote resilience. Graded or controlled stress experience can promote better performance on several behavioral tasks. Included are three hypothetical curves describing how stress inoculation might affect responses to future stress: (i) a leftward shift shows that inoculation might make lower levels of stress promote better performance (blue); (ii) an upward shift shows that inoculation might promote higher maximal performance in response to stress (red); and (iii) a rightward shift shows that inoculation might enable the maintenance of optimal performance at higher levels of stress (gray).

Stress over the life cycle in the development of resilience.

Developmental and psychological research in humans over the last two decades has demonstrated that, rather than being a rare trait, resilience in both children and adults is a common outcome following adversity, representing successful, adaptive coping in the face of stress^{39,40}. In the general population, between 50 and 60% experience a severe trauma, yet the prevalence of illness is estimated to be only 7.8% (ref. 41). Children in particular display remarkable resilience across a range of negative environmental stressors³⁹. One important set of observations concerns the potential pro-resilience effect of encountering and overcoming stress-inducing situations during development. According to this model, coping with moderate amounts of stress leads to an individual sense of mastery and promotes resilience in the future. It might be that more moderate exposure to stress allows for a sense of stress mastery, enhancing one's perception of control. This inverted U-shaped relationship between stress and coping, whereby low and high levels of stress both impair behavior, whereas intermediate levels actually promote positive coping responses (Fig. 2) can be observed in all organisms throughout their lifetime and suggests that maintaining optimal stress exposure might prevent the development of major psychiatric dysfunction.

A potentially related phenomenon observed in laboratory animals, sometimes referred to as "stress inoculation," was first described by Levine *et al.*, who showed that infant rats exposed to intermittent foot shocks subsequently respond more effectively when confronted with novel situations compared to their non-stressed counterparts⁴². Subsequent work has examined in detail the long-term effects of brief, intermittent mother-offspring separations in squirrel monkeys (for review, see ref. 43). In a common experimental design, socially housed monkeys are randomized to either brief intermittent separations or an unseparated control condition at 17 weeks of age. Over ten separation sessions, a monkey is removed from the group for 1 h per week. At 9 months of age, behavioral and hormonal parameters are measured in separated and unseparated monkeys in a novel environment stress test⁴⁴. Compared to unseparated monkeys, previously separated monkeys show fewer signs of anxiety and more exploration of the environment, coupled with diminished plasma cortisol and ACTH⁴⁴. Separated monkeys also demonstrate enhanced response inhibition to

previously rewarding stimuli, suggesting improved cognitive control of behavior⁴⁵. These and related findings highlight the critical window of stress exposure and suggest that early intermittent separations enhance stress tolerance; that is, promote resilience.

The development of standardized rodent models of early life stress will greatly increase our ability to study the mechanisms of stress inoculation. A recent study showed that maternal deprivation during early periods combined with chronic unpredictable stress (CUS; exposure to varying physical stresses) as a juvenile promoted a greater degree of stress resilience than maternal deprivation alone or when combined with adult CUS⁴⁶. This work points to critical developmental mechanisms engaged during early stress exposure; however, much future work is needed to make these paradigms more routine, particularly in mice.

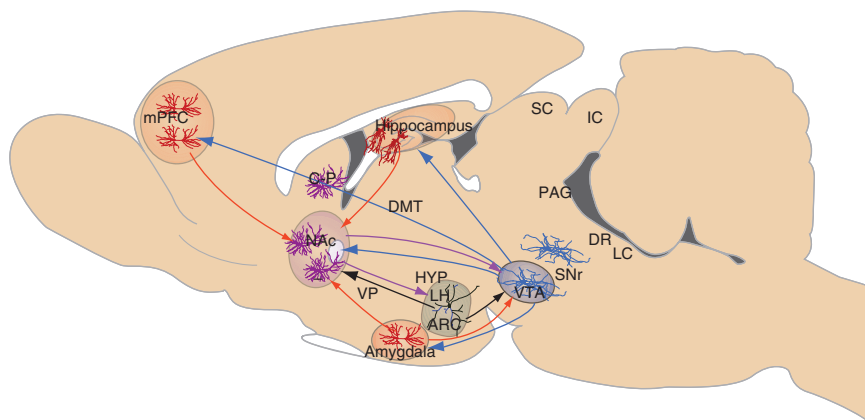
Although a relatively large animal and human literature has shown that chronic exposure of adults to high levels of stress is usually associated with increased susceptibility to mood, anxiety and addiction disorders^{6,24,36,47–49}, there is some evidence that more graded exposure of adults to stress might reduce such vulnerabilities and promote resilience. Over several decades, McEwen and colleagues systematically measured the type, length and quality of stress experience on many rat behaviors and found that stress affects most behavioral domains with an inverted U-shaped curve (for review, see ref. 50). The shape of the inverted U differs with many factors, including sex, strain and behavioral domain. For example, although female rodents tend to be more susceptible to stress-induced dysfunction in emotional domains, such as sucrose preference and forced swim test, they tend to show a greater degree of stress resilience in cognitive domains, such as object placement and recognition (for review, see ref. 51). These findings suggest that some level of stress and the context in which it is experienced may help adult animals to develop better coping responses to future stress experiences.

Although further research is necessary to confirm some of these hypotheses, it seems clear that moderate degrees of stress exposures during early life, adolescence and adulthood can shift an individual's stress-vulnerability curve to the right or broaden the curve by increasing the range of tolerable stress for the organism (Fig. 2). The ability to harness such approaches might have important therapeutic applications.

Neurobiological findings in animal models of resilience

In recent years, the aforementioned animal models have just begun to be used to define the neural circuits and molecular adaptations within these circuits that contribute to resilience. In several cases, key findings in animals have been demonstrated in human post-mortem brain, which provides an important measure of validation. As mentioned above, resilience is often defined as the absence of behavioral symptoms in a subset of animals subjected to chronic stress. Indeed, numerous studies have identified pro-susceptibility neural and molecular factors, which, if removed, promote stress resilience^{52–54}. However, this approach suggests that stress resilience is solely a passive process, whereby an animal's lack of response is adaptive. While this is no doubt true for certain conditions and biological pathways, there is increasing evidence that stress resilience also arises from active coping strategies, both behavioral and molecular. For example, many have argued that, during chronic exposure to stress, behavioral strategies that limit the stress experience could promote resilience. During social defeat stress, animals that engage in less submissive posturing during the attack show less social avoidance later, suggesting that this behavioral coping strategy may affect the aggressive interaction and thereby lessen the effects of the stress⁵⁵.

Figure 3 Brain circuitry implicated in resilience to depression and anxiety disorders. Depicted are the major brain structures in mood-related circuits that are altered by stress in animal models of depression or implicated in human depression. The red solid lines represent excitatory glutamatergic afferents to NAc from mPFC, amygdala and hippocampus, and glutamatergic innervation of VTA by amygdala. GABAergic afferents (purple) are inhibitory circuits and include connections from NAc to VTA and hypothalamus. Dopamine neurons (blue solid lines) project from VTA to a range of limbic targets, including NAc, mPFC, amygdala and hippocampus. Peptidergic pathways through which the hypothalamus (for example, ARC, arcuate nucleus, and LH, lateral hypothalamus) alters neurotransmission in NAc and VTA are shown in solid black lines. Each structure contains specialized neuronal cell types thought to regulate stress responses, including resilience. These cell types, color-coded to reflect the transmitter signal they convey, include amygdala, PFC and hippocampal glutamatergic neurons (red), GABAergic NAc medium spiny neurons (purple), hypothalamic peptidergic neurons (black), and VTA dopaminergic neurons (blue). CP, caudate-putamen; DMT, dorsomedial thalamus; SC, superior colliculus; IC, inferior colliculus; VP, ventral pallidum; SNr, substantia nigra; PAG, periaqueductal gray; DR, dorsal raphe; LC, locus coeruleus.



Although other examples of behavioral coping strategies have been described⁵⁶, only recently have neurobiological mechanisms of active resilience been characterized. It turns out that resilience to chronic social defeat stress is associated with many distinct changes in gene expression and chromatin modifications in specific brain regions that are not seen in susceptible animals^{24,57}. In this section, we focus on such active mechanisms of resilience, first considering the evolving neural circuitry implicated in resilience and then presenting several specific active molecular processes that have been shown recently to mediate a resilient phenotype in rodent models.

Glutamatergic signaling and synaptic connectivity. Depression and anxiety are heterogeneous disorders marked by deficits in many behavioral domains and controlled by many brain structures (Fig. 3). Numerous studies suggest that depression and anxiety in humans result in part from hypoactivation and reduced volume of frontal cortical and hippocampal regions that control subcortical structures such as the nucleus accumbens (NAc) and amygdala, although hyperactivation of certain PFC regions (for example, the subgenual area of anterior cingulate cortex) is also involved^{58–61}. In addition, functional MRI (fMRI) studies have shown that both depression and anxiety are associated with hyperactivity of amygdala⁶². Although imaging studies in NAc are less clear, most would argue for hypoactivity of NAc in depression, which is supported by deep brain stimulation studies that show that electrical stimulation of the anterior limb of the internal capsule (which includes NAc) alleviates symptoms of depression and anxiety. fMRI blood oxygen level–dependent (BOLD) signals in humans provide an understanding of which structures are more or less active based on oxygen utilization; however, it is unclear whether these adaptations occur in inhibitory or excitatory neurons, or for that matter glia, and thus whether they reflect an overall increase or decrease in net circuit activity. To address this question, investigators are studying rodent models to understand circuit-level synaptic changes in glutamate systems with far greater precision. In general, the literature supports the idea that chronic stress reduces dendritic arborization and glutamatergic dendritic spine density of pyramidal neurons in PFC and hippocampus and reduces hippocampal neurogenesis, while increasing dendritic spine number or branching in the amygdala and NAc (for review, see ref. 63). Hypoactive PFC and hippocampal inputs to neurons in these subcortical structures may

mediate their activation and the subsequent activity-dependent structural plasticity of their dendrites, although further research is needed in this area.

Despite this work focused on stress susceptibility, few reports have examined whether resilience is associated with any active mechanisms in this defined brain circuitry. Recent studies have shown a greater degree of c-Fos, FosB or Δ FosB expression in glutamatergic neurons of medial PFC (mPFC; infralimbic, paralimbic PFC) of resilient mice following chronic predator or social defeat stress^{25,64,65}. Increased expression of these immediate-early gene products would suggest increased neuronal activation in this brain region, which might represent a pro-resilience adaptation. Consistent with this hypothesis, Covington *et al.* showed that direct optogenetic stimulation of mPFC neurons with channelrhodopsin (ChR2) promotes resilience to social defeat stress⁶⁵. Although this initial work did not distinguish between glutamatergic and GABAergic neurons, more recent work using a viral vector that specifically targets ChR2 to glutamatergic neurons in mPFC showed that optogenetic stimulation of the glutamatergic microcircuit from PFC to NAc is antidepressant (Christoffel, D.J. *et al. Soc. Neurosci. Abstr.* 605.21, 2012). Future studies examining the contribution of other glutamatergic microcircuits to resilient responses, using this powerful methodology, will further delineate the circuit basis of resilience.

Early intermittent maternal separations that promote resilience increase cortical volume in ventromedial PFC (VMPFC)⁶⁶, changes opposite in direction to those seen in depressed humans and stressed rodents. Understanding the molecular basis of these active restructuring processes may shed light on the hypofrontality observed in depression or anxiety disorders^{67,68}, as well as the circuit mechanisms underlying stress inoculation. Notably, environmental enrichment similarly increases the complexity of the dendritic tree, dendritic spine density and synaptic protein levels of pyramidal neurons in hippocampus and PFC, suggesting that this may be a shared feature of resilience under these two distinct conditions⁶⁹. Likewise, in rodents, enrichment increases expression of FosB and Δ FosB in mPFC and is reported to confer resilience to stress-induced increases in depression- and anxiety-like behaviors across domains²⁵ (Fig. 4). These data provide an important counterpoint to earlier studies of the deleterious effects of early life stress on neural structures involved in emotional behavior and stress responses. Rats exposed to severe chronic stress during gestation, which promotes depression-like behaviors later in

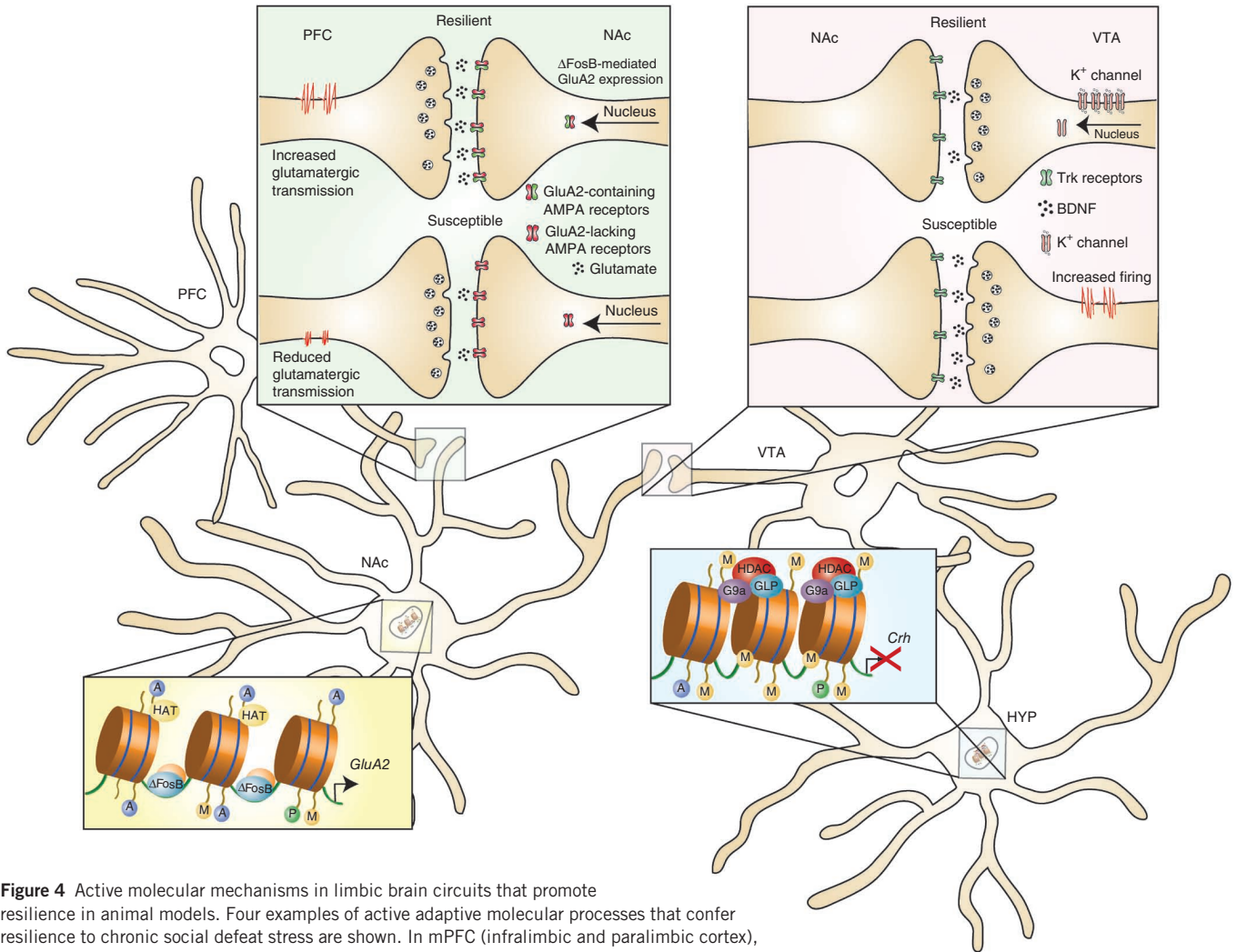


Figure 4 Active molecular mechanisms in limbic brain circuits that promote resilience in animal models. Four examples of active adaptive molecular processes that confer resilience to chronic social defeat stress are shown. In mPFC (infralimbic and paralimbic cortex), resilient animals display molecular evidence of increased neural activity, which has been shown through optogenetic techniques to promote resilience. The cell type (GABAergic versus glutamatergic) exhibiting this hyperactivity is not known. VTA dopamine neurons of resilient animals show increased transcription of K⁺ channel subunits, which normalizes the stress-induced increase in VTA firing rate that drives deleterious responses to stress. In NAc, resilience is associated with increased ΔFosB-mediated transcription of *GluA2* (also known as *Gria2*), a Ca²⁺-impermeable AMPA glutamate receptor subunit that counteracts glutamate hyperactivity found in susceptible mice. In hypothalamus, resilience is associated with hypermethylation of the *Crh* gene, and presumably related repressive marks, to suppress its transcription and reduce HPA hyperactivity found in susceptible mice.

life, exhibit decreased dendritic spine density in the anterior cingulate gyrus and orbitofrontal cortex⁷⁰. The contrasts between the neural and behavioral effects observed in the context of different stress paradigms highlights the markedly divergent consequences resulting from differences in the developmental timing and the type, magnitude and duration of stress exposure, as noted above.

Whereas susceptibility to chronic social defeat stress is associated with increased glutamatergic tone, including greater frequency of excitatory currents and number of glutamatergic synapses, on medium spiny neurons in NAc, there is recent evidence that resilience is mediated in part by an active adaptation that opposes this susceptibility mechanism^{52,71}. ΔFosB is induced in medium spiny NAc neurons preferentially in resilient animals, where it promotes resilience partly by inducing expression of GluA2 (GluR2), an AMPA-type glutamate receptor subunit that reduces the Ca²⁺ permeability and overall conductance of AMPA channels⁷¹. Gene expression arrays have identified many other targets for ΔFosB in NAc of resilient animals, which now warrant examination for their possible functions in mediating resilience as well. Indeed, reduced ΔFosB and GluA2 have been

documented in NAc of depressed humans examined post mortem⁷¹ (Fig. 4). The selective induction of ΔFosB in NAc of resilient animals is mediated through the activation of serum response factor (SRF) under these conditions⁷², although the mechanism responsible for SRF's selective induction in resilient individuals remains unknown.

K⁺ channel-driven intrinsic excitability of neurons. Another active neural mechanism of resilience is the normalization of firing rate of ventral tegmental area (VTA) dopamine neurons in the chronic social defeat stress paradigm²⁴ (Fig. 4). Our initial analysis showed that the firing rate of VTA dopamine neurons was normal in resilient animals and increased in susceptible animals, which would appear to reflect the absence of a stress-induced change in resilience. However, upon closer examination, there is an independent, active process occurring in resilient mice that normalizes VTA firing to control levels and thus prevents social avoidance and sucrose preference deficits. The hyperexcitability of VTA dopamine neurons in susceptible mice is mediated in part by induction of hyperpolarization-activated cation current (I_h), which increases the intrinsic excitability of these neurons (ref. 73 and

Friedman, A.K. *et al. Soc. Neurosci. Abstr.* 907.26, 2011). Surprisingly, this current is similarly increased in VTA neurons of resilient mice, suggesting the existence of an additional ionic mechanism, which counteracts the increased I_h function and normalizes firing rate in resilient mice. Our early microarray analyses in VTA identified large increases in a cluster of mRNAs encoding K^+ channel subunits, including KCNF1, KCNH3, KCNK4 and KCNQ3, in resilient mice²⁴. This finding was functionally confirmed by electrophysiological studies, and such induction of K^+ channels functionally occludes the increased I_h current and thereby actively promotes behavioral resilience^{24,73}.

It is surprising that increased excitability of VTA dopamine neurons mediates susceptibility, with normalization mediating resilience, because such firing is generally seen as promoting reward and motivation, both implicated in resilience². However, increased firing of VTA dopamine neurons has long been documented in response not only to rewards but also to aversive stimuli, and it has been suggested that it increases salience for both types of stimuli^{24,73–76}. One possible explanation of this paradox is that different subsets of VTA dopamine neurons may show activation by rewarding and by aversive stimuli⁷⁷. This highlights the fact that, across laboratories and experimental conditions, there is no one-to-one correspondence between reward and resilience. Not all molecular changes in the VTA or NAc that increase drug or natural reward promote resilience, and vice versa. Optogenetic studies, which now make it possible to selectively activate subsets of VTA dopamine neurons, or their efferent or afferent connections, should help our understanding of the circuit mechanisms by which VTA dopamine neuron firing regulates responses to rewarding and aversive stimuli and determines stress susceptibility versus resilience (ref. 78 and Chaudhury, D. *et al. Soc. Neurosci. Abstr.* 907.27, 2011).

K^+ channel-mediated adaptations have also been observed in NAc after prolonged social isolation of adult mice or rats, which induces depression- and anxiety-like behavioral abnormalities⁴⁹ and promotes susceptibility to chronic social defeat stress⁷¹. Induction of particular K^+ channel subunits in NAc in response to adult social isolation was shown to contribute to depression-like symptoms seen in this paradigm, whereas normalization of K^+ -channel function contributes to antidepressant responses⁴⁹.

Consistent with this work in VTA and NAc, there is increasing evidence that several types of K^+ channels function as general gatekeepers of neuronal excitability in numerous experimental systems^{79,80}. The findings centered around K^+ channels underscore the value of focusing on the molecular mechanisms of active resilience and warrant attention as potential targets for the development of new treatments of stress-associated mental disorders.

Neuroendocrine mechanisms. As mentioned above, the HPA axis is critical in mediating stress responses, with disruption of normal HPA function (up or down) associated with both depressive and anxiety syndromes in humans. Rodent models have largely supported this literature. For example, prenatal exposure to glucocorticoids increases CRH in the central nucleus of amygdala and reduces the volume of PFC structures in adulthood⁷⁰. Elevated glucocorticoids may mediate the ability of stress to reduce the dendritic spine density of PFC pyramidal neurons in parallel with hypertrophic effects in basolateral amygdala⁷⁰, as described above. There is also evidence that the HPA axis may influence resilience. For example, Meaney and co-workers have characterized the effects of early-life maternal care in rats on glucocorticoid receptor expression in hippocampus and on emotional behavior. They found that high levels of maternal care are associated with decreased DNA methylation of the glucocorticoid receptor gene, higher levels of glucocorticoid receptor expression, greater feedback

inhibition of the HPA axis and resilient stress responses in adulthood (for review, see ref. 81). The glucocorticoid receptor gene is likely just one of many epigenetic targets of greater maternal care that promote resilience later in life.

Less is known about HPA axis adaptations in adult animals that might contribute to resilience⁸². One recent paper found an epigenetic mechanism, induced by chronic stress in resilient mice only, that controls HPA axis hyperactivity⁸³ (Fig. 4). The authors showed that, after chronic social defeat stress, *Crh* gene expression is increased in the paraventricular nucleus of the hypothalamus of susceptible animals and that this adaptation is necessary for the development of social avoidance⁸³. Notably, the *Crh* gene is hypermethylated and silenced to prevent *Crh* induction in the subset of animals termed resilient for their lack of social avoidance. Expression of a small interfering RNA to decrease CRH expression was sufficient to prevent social avoidance in susceptible mice. Consistent with these observations, environmental enrichment paradigms that promote resilience in rodents also reduce ACTH and corticosterone responses to stress, suggesting an interesting link among genetic, experience-based and epigenetic factors⁸⁴.

As alluded to earlier, male rodents are more resilient than females with respect to the effects of chronic stress on emotional aspects of depression-like and anxiety-like behavioral domains. For example, we have shown that subchronic unpredictable stress induces anhedonia (decreased sucrose preference), increased immobility on the forced swim test and increased anxiety (greater latency to feed in a novel environment and decreased time grooming in the splash test). The data show that females are more sensitive than males in these domains (ref. 85 and Hodes, G.E., Christoffel, D.J., Golden, S.A., Ahn, H.F. & Russo, S.J., *Soc. Neurosci. Abstr.* 219.01, 2011). However, as mentioned above, stressed females tend to perform better than males on nonaversive cognitive or memory tasks. Stress enhances the performance of female rodents on the radial arm maze, Morris water maze, Y-maze, nonassociative learning and object placement tasks, whereas stress impairs male performance in these assays^{86–88}. Conversely, in tests of acute stress or aversive conditioning, stress enhances learning in males and impairs it in females^{89,90}. These data highlight the possibility that males and females may use different coping strategies in the face of stress, which has led to the hypothesis that gonadal hormones, such as testosterone in males, might promote resilience to deficits on emotional domains, whereas estrogen or progesterone may promote stress resilience in females in cognitive domains. Moreover, the literature suggests that in cognitive domains females cope better with chronic forms of stress, whereas males tend to cope better with acute stress.

Although most human work is limited to correlative studies, there is evidence that testosterone in males promotes resilience in MDD and PTSD, potentially consistent with epidemiological data showing that women are significantly more vulnerable to developing these disorders than men^{16,17}. On the basis of the animal work stated above, future studies in humans should investigate sex differences in vulnerability to stress-related deficits in cognitive and emotional domains. Indeed, evidence from women across the reproductive lifespan suggests that fluctuating ovarian hormones are likely a biological source of increased prevalence for these disorders. Work in rodents largely confirms this, showing that removal of ovarian hormones decreases the prodepressant or anxiogenic effects of stress, while increasing the negative effects of stress on spatial and nonspatial memory^{85,91,92}. As well, maternal experience in female rodents seems to promote resilience to the effects of stress on cognition, which is likely in part through hormonal mechanisms regulating oxytocin⁹³. Although much future work is needed to understand these influences of gonadal

hormones in promoting or opposing resilience, studies of the underlying mechanisms of sex differences in stress responses can provide us with unique biological information about the mechanisms of coping in depression and anxiety disorders.

Therapeutic implications

An important finding from animal studies of neurobiological and neuroendocrine mechanisms of resilience-like behavioral adaptations is that resilience is likely mediated, in large part, through active adaptations that occur selectively in resilient individuals (Fig. 1). Indeed, genome-wide studies in the chronic social defeat paradigm have identified a range of gene expression changes and chromatin modifications in VTA and NAc that occur only in resilience^{24,57}. Examples of genes involved include those encoding Δ FosB and SRF, discussed above, as well as HDAC2 (histone deacetylase-2) and those of the WNT (wingless)–DVL (disheveled)–GSK3 β (glycogen synthase kinase-3 β) signaling cascade^{71,72,94}. In fact, there is substantial overlap between genes that are regulated in resilience and those that are regulated by chronic antidepressant treatment of susceptible individuals⁵⁷, raising the possibility that one way in which existing antidepressants work is by inducing in depressed individuals some of the same adaptations that occur naturally in inherently resilient individuals. These insights thus suggest a new path forward for the development of new treatments of stress-related disorders: in addition to looking for ways to prevent or reverse the deleterious effects of stress, it should be possible to induce natural mechanisms of resilience, distinct from the actions of existing antidepressants, in more vulnerable populations.

There is already considerable behavioral evidence for this approach. Stress resilience is enhanced in specific populations, such as military personnel and rescue workers, through controlled exposure to stress-related stimuli. Similarly, behavior therapy uses controlled stress exposure as one means to treat symptoms of mood and anxiety disorders. For example, exposure therapy and cognitive behavioral therapy can aid individuals with PTSD through cognitive restructuring and relaxation techniques after a traumatic event to promote recovery. These effects are well documented to reverse hyperactivity of PFC-amygdala microcircuits shown to be overactive in PTSD (for review, see ref. 62). It is possible that similar behavioral approaches might be adopted in at-risk populations to enhance resilience to subsequent stressful life events and prevent the development of these disorders.

Such treatments might be understood as being analogous to stress inoculation in that experiencing more moderate levels of stress, combined with techniques that reduce physiological and psychological perception of the trauma, can promote positive coping responses. The observation that such approaches significantly reduce PTSD severity supports the view that targeting underlying biological mechanisms of stress inoculation may provide us with new protein targets for new medications that further promote resilience in at-risk populations. Likewise, identification of pro-resilience factors should make it possible to identify predictive biomarkers of resilience, which should greatly aid in recognizing at-risk populations.

Future directions

As we learn more about the neurobiological mechanisms that confer resilience on an individual, the goal to develop treatment strategies to restore or enhance coping resources should improve the efficacy of treatment. However, we are just beginning to identify such resilience factors. A major gap in the field is the lack of coordination between human and animal studies. Human research has identified several tentative neuroendocrine concomitants of resilience (for example, testosterone and NPY), which have not yet been adequately investigated

mechanistically in animal models, whereas it remains challenging to experimentally interrogate the vast majority of neurobiological mechanisms discovered in animals (for example, Δ FosB and K⁺ channels) in living humans.

Nevertheless, work has identified several important areas for future investigation. First, there is a great need for human brain imaging studies to determine the brain structures and circuits that mediate stress resilience. Deep brain stimulation in humans⁶⁰ could potentially be used to provide valuable causal information about dysfunction of brain structures and circuits in depression and anxiety. This information could then be used in conjunction with optogenetic studies in rodent models, where we can more definitively describe the neural circuitry of resilience. Second, it is crucial to identify the range of heritable factors that help determine an individual's capacity for resilience. Extrapolating from genetic studies of other complex human traits, it is likely that complex combinations of perhaps hundreds of genetic variations, rare and common in the population, comprise this genetic basis of resilience. Third, we must characterize the epigenetic mechanisms that control the degree to which this genetic predilection for resilience become manifest. Part of this epigenetic control of gene expression will occur in response to a host of environmental stimuli throughout life, but a portion may occur through random events during brain development. Fourth, far more insight is needed into the genetic, epigenetic, neurobiological and neuroendocrine basis of sex differences in stress susceptibility versus resilience. Finally, we need to better define how just the right type and level of stress inoculation, through this complex interplay of mechanisms, can promote resilience.

In the end, studies of resilience have unleashed a fundamentally new way of understanding an individual's responses to adverse life events and have ushered in an exciting new era in studies of MDD, PTSD and other stress-related disorders.

ACKNOWLEDGMENTS

Preparation of this review was supported by grants from the US National Institute of Mental Health: R01 MH090264 (S.J.R.); K23 MH094707 (J.W.M.); R01 MH092306 (M.-H.H.); and R01 MH51399, P50 MH66172 and P50 MH96890 (E.J.N.).

COMPETING FINANCIAL INTERESTS

The authors declare no competing financial interests.

Published online at <http://www.nature.com/doi/10.1038/nn.3234>.

Reprints and permissions information is available online at <http://www.nature.com/reprints/index.html>.

1. Charney, D.S. Psychobiological mechanisms of resilience and vulnerability: implications for successful adaptation to extreme stress. *Am. J. Psychiatry* **161**, 195–216 (2004).
2. Feder, A., Nestler, E.J. & Charney, D.S. Psychobiology and molecular genetics of resilience. *Nat. Rev. Neurosci.* **10**, 446–457 (2009).
3. Herman, J.P. & Cullinan, W.E. Neurocircuitry of stress: central control of the hypothalamo-pituitary-adrenocortical axis. *Trends Neurosci.* **20**, 78–84 (1997).
4. Stetler, C. & Miller, G.E. Depression and hypothalamic-pituitary-adrenal activation: a quantitative summary of four decades of research. *Psychosom. Med.* **73**, 114–126 (2011).
5. Meewisse, M.L., Reitsma, J.B., de Vries, G.J., Gersons, B.P. & Olff, M. Cortisol and post-traumatic stress disorder in adults: systematic review and meta-analysis. *Br. J. Psychiatry* **191**, 387–392 (2007).
6. Heim, C., Newport, D.J., Mletzko, T., Miller, A.H. & Nemeroff, C.B. The link between childhood trauma and depression: insights from HPA axis studies in humans. *Psychoneuroendocrinology* **33**, 693–710 (2008).
7. Heim, C., Newport, D.J., Miller, A.H. & Nemeroff, C.B. Long-term neuroendocrine effects of childhood maltreatment. *J. Am. Med. Assoc.* **284**, 2321 (2000).
8. Yehuda, R., Golier, J.A. & Kaufman, S. Circadian rhythm of salivary cortisol in Holocaust survivors with and without PTSD. *Am. J. Psychiatry* **162**, 998–1000 (2005).
9. Rasmusson, A.M., Vythilingam, M. & Morgan, C.A. III. The neuroendocrinology of posttraumatic stress disorder: new directions. *CNS Spectr.* **8**, 651–656, 665–667 (2003).

10. Yehuda, R., Brand, S.R., Golier, J.A. & Yang, R.K. Clinical correlates of DHEA associated with post-traumatic stress disorder. *Acta Psychiatr. Scand.* **114**, 187–193 (2006).
11. Butterfield, M.I. *et al.* Neuroactive steroids and suicidality in posttraumatic stress disorder. *Am. J. Psychiatry* **162**, 380–382 (2005).
12. Taylor, M.K. *et al.* Effects of dehydroepiandrosterone supplementation during stressful military training: a randomized, controlled, double-blind field study. *Stress* **15**, 85–96 (2012).
13. Oliveira, T., Gouveia, M.J. & Oliveira, R.F. Testosterone responsiveness to winning and losing experiences in female soccer players. *Psychoneuroendocrinology* **34**, 1056–1064 (2009).
14. Edwards, D.A., Wetzel, K. & Wyner, D.R. Intercollegiate soccer: saliva cortisol and testosterone are elevated during competition, and testosterone is related to status and social connectedness with team mates. *Physiol. Behav.* **87**, 135–143 (2006).
15. Morgan, C.A. III *et al.* Hormone profiles in humans experiencing military survival training. *Biol. Psychiatry* **47**, 891–901 (2000).
16. Mulchahey, J.J. *et al.* Cerebrospinal fluid and plasma testosterone levels in post-traumatic stress disorder and tobacco dependence. *Psychoneuroendocrinology* **26**, 273–285 (2001).
17. Pope, H.G. Jr., Cohane, G.H., Kanayama, G., Siegel, A.J. & Hudson, J.I. Testosterone gel supplementation for men with refractory depression: a randomized, placebo-controlled trial. *Am. J. Psychiatry* **160**, 105–111 (2003).
18. Morgan, C.A. III *et al.* Plasma neuropeptide-Y concentrations in humans exposed to military survival training. *Biol. Psychiatry* **47**, 902–909 (2000).
19. Morgan, C.A. III *et al.* Neuropeptide-Y, cortisol, and subjective distress in humans exposed to acute stress: replication and extension of previous report. *Biol. Psychiatry* **52**, 136–142 (2002).
20. Zhou, Z. *et al.* Genetic variation in human NPY expression affects stress response and emotion. *Nature* **452**, 997–1001 (2008).
21. Mickey, B.J. *et al.* Emotion processing, major depression, and functional genetic variation of neuropeptide Y. *Arch. Gen. Psychiatry* **68**, 158–166 (2011).
22. Taliaz, D. *et al.* Resilience to chronic stress is mediated by hippocampal brain-derived neurotrophic factor. *J. Neurosci.* **31**, 4475–4483 (2011).
23. Cohen, H. *et al.* The neuropeptide Y (NPY)-ergic system is associated with behavioral resilience to stress exposure in an animal model of post-traumatic stress disorder. *Neuropsychopharmacology* **37**, 350–363 (2012).
24. Krishnan, V. *et al.* Molecular adaptations underlying susceptibility and resistance to social defeat in brain reward regions. *Cell* **131**, 391–404 (2007).
25. Lehmann, M.L. & Herkenham, M. Environmental enrichment confers stress resiliency to social defeat through an infralimbic cortex-dependent neuroanatomical pathway. *J. Neurosci.* **31**, 6159–6173 (2011).
26. Delgado y Palacios, R. *et al.* Magnetic resonance imaging and spectroscopy reveal differential hippocampal changes in anhedonic and resilient subtypes of the chronic mild stress rat model. *Biol. Psychiatry* **70**, 449–457 (2011).
27. Golden, S.A., Covington, H.E. III, Berton, O. & Russo, S.J. A standardized protocol for repeated social defeat stress in mice. *Nat. Protoc.* **6**, 1183–1191 (2011).
28. Lutter, M. *et al.* The orexigenic hormone ghrelin defends against depressive symptoms of chronic stress. *Nat. Neurosci.* **11**, 752–753 (2008).
29. Berton, O. *et al.* Induction of deltaFosB in the periaqueductal gray by stress promotes active coping responses. *Neuron* **55**, 289–300 (2007).
30. Fleshner, M., Maier, S.F., Lyons, D.M. & Raskind, M.A. The neurobiology of the stress-resistant brain. *Stress* **14**, 498–502 (2011).
31. Vidal, J., Buwalda, B. & Koolhaas, J.M. Male Wistar rats are more susceptible to lasting social anxiety than wild-type Groningen rats following social defeat stress during adolescence. *Behav. Processes* **88**, 76–80 (2011).
32. Uchida, S. *et al.* Epigenetic status of *Gdnf* in the ventral striatum determines susceptibility and adaptation to daily stressful events. *Neuron* **69**, 359–372 (2011).
33. Mozhui, K. *et al.* Strain differences in stress responsivity are associated with divergent amygdala gene expression and glutamate-mediated neuronal excitability. *J. Neurosci.* **30**, 5357–5367 (2010).
34. Andrus, B.M. *et al.* Gene expression patterns in the hippocampus and amygdala of endogenous depression and chronic stress models. *Mol. Psychiatry* **17**, 49–61 (2012).
35. Nesse, R.M. Is depression an adaptation? *Arch. Gen. Psychiatry* **57**, 14–20 (2000).
36. Berton, O. *et al.* Essential role of BDNF in the mesolimbic dopamine pathway in social defeat stress. *Science* **311**, 864–868 (2006).
37. Covington, H.E. III *et al.* Antidepressant actions of histone deacetylase inhibitors. *J. Neurosci.* **29**, 11451–11460 (2009).
38. Covington, H.E. III, Vialou, V.F., LaPlant, Q., Ohnishi, Y.N. & Nestler, E.J. Hippocampal-dependent antidepressant-like activity of histone deacetylase inhibition. *Neurosci. Lett.* **493**, 122–126 (2011).
39. Masten, A.S. Ordinary magic. Resilience processes in development. *Am. Psychol.* **56**, 227–238 (2001).
40. Bonanno, G.A. Loss, trauma, and human resilience: have we underestimated the human capacity to thrive after extremely aversive events? *Am. Psychol.* **59**, 20–28 (2004).
41. Kessler, R.C., Sonnega, A., Bromet, E., Hughes, M. & Nelson, C.B. Posttraumatic stress disorder in the National Comorbidity Survey. *Arch. Gen. Psychiatry* **52**, 1048–1060 (1995).
42. Levine, S. Plasma-free corticosteroid response to electric shock in rats stimulated in infancy. *Science* **135**, 795–796 (1962).
43. Lyons, D.M., Parker, K.J. & Schatzberg, A.F. Animal models of early life stress: implications for understanding resilience. *Dev. Psychobiol.* **52**, 616–624 (2010).
44. Parker, K.J., Buckmaster, C.L., Schatzberg, A.F. & Lyons, D.M. Prospective investigation of stress inoculation in young monkeys. *Arch. Gen. Psychiatry* **61**, 933–941 (2004).
45. Parker, K.J., Buckmaster, C.L., Justus, K.R., Schatzberg, A.F. & Lyons, D.M. Mild early life stress enhances prefrontal-dependent response inhibition in monkeys. *Biol. Psychiatry* **57**, 848–855 (2005).
46. Ricon, T., Toth, E., Leshem, M., Braun, K. & Richter-Levin, G. Unpredictable chronic stress in juvenile or adult rats has opposite effects, respectively, promoting and impairing resilience. *Stress* **15**, 11–20 (2012).
47. Bradley, R.G. *et al.* Influence of child abuse on adult depression: moderation by the corticotropin-releasing hormone receptor gene. *Arch. Gen. Psychiatry* **65**, 190–200 (2008).
48. Caspi, A., Hariri, A.R., Holmes, A., Uher, R. & Moffitt, T.E. Genetic sensitivity to the environment: the case of the serotonin transporter gene and its implications for studying complex diseases and traits. *Am. J. Psychiatry* **167**, 509–527 (2010).
49. Wallace, D.L. *et al.* CREB regulation of nucleus accumbens excitability mediates social isolation-induced behavioral deficits. *Nat. Neurosci.* **12**, 200–209 (2009).
50. McEwen, B.S. & Gianaros, P.J. Stress- and allostasis-induced brain plasticity. *Annu. Rev. Med.* **62**, 431–445 (2011).
51. Luine, V. Sex differences in chronic stress effects on memory in rats. *Stress* **5**, 205–216 (2002).
52. Christoffel, D.J. *et al.* IkappaB kinase regulates social defeat stress-induced synaptic and behavioral plasticity. *J. Neurosci.* **31**, 314–321 (2011).
53. Tsankova, N.M. *et al.* Sustained hippocampal chromatin regulation in a mouse model of depression and antidepressant action. *Nat. Neurosci.* **9**, 519–525 (2006).
54. Christoffel, D.J. *et al.* Effects of inhibitor of κ B kinase activity in the nucleus accumbens on emotional behavior. *Neuropsychopharmacology* published online, doi:10.1038/npp.2012.121 (11 July 2012).
55. Wood, S.K., Walker, H.E., Valentino, R.J. & Bhatnagar, S. Individual differences in reactivity to social stress predict susceptibility and resilience to a depressive phenotype: role of corticotropin-releasing factor. *Endocrinology* **151**, 1795–1805 (2010).
56. Ono, Y. *et al.* Active coping with stress suppresses glucose metabolism in the rat hypothalamus. *Stress* **15**, 207–217 (2012).
57. Wilkinson, M.B. *et al.* Imipramine treatment and resiliency exhibit similar chromatin regulation in the mouse nucleus accumbens in depression models. *J. Neurosci.* **29**, 7820–7832 (2009).
58. Price, J.L. & Drevets, W.C. Neurocircuitry of mood disorders. *Neuropsychopharmacology* **35**, 192–216 (2010).
59. Murrough, J.W., Iacoviello, B., Neumeister, A., Charney, D.S. & Iosifescu, D.V. Cognitive dysfunction in depression: neurocircuitry and new therapeutic strategies. *Neurobiol. Learn. Mem.* **96**, 553–563 (2011).
60. Mayberg, H.S. Targeted electrode-based modulation of neural circuits for depression. *J. Clin. Invest.* **119**, 717–725 (2009).
61. van Tol, M.J. *et al.* Functional magnetic resonance imaging correlates of emotional word encoding and recognition in depression and anxiety disorders. *Biol. Psychiatry* **71**, 593–602 (2012).
62. Linden, D.E. How psychotherapy changes the brain—the contribution of functional neuroimaging. *Mol. Psychiatry* **11**, 528–538 (2006).
63. Christoffel, D.J., Golden, S.A. & Russo, S.J. Structural and synaptic plasticity in stress-related disorders. *Rev. Neurosci.* **22**, 535–549 (2011).
64. Adamec, R., Toth, M., Haller, J., Halasz, J. & Blundell, J. A comparison of activation patterns of cells in selected prefrontal cortical and amygdala areas of rats which are more or less anxious in response to predator exposure or submersion stress. *Physiol. Behav.* **105**, 628–638 (2012).
65. Covington, H.E. III *et al.* Antidepressant effect of optogenetic stimulation of the medial prefrontal cortex. *J. Neurosci.* **30**, 16082–16090 (2010).
66. Katz, M. *et al.* Prefrontal plasticity and stress inoculation-induced resilience. *Dev. Neurosci.* **31**, 293–299 (2009).
67. Milad, M.R., Orr, S.P., Pitman, R.K. & Rauch, S.L. Context modulation of memory for fear extinction in humans. *Psychophysiology* **42**, 456–464 (2005).
68. Rauch, S.L. *et al.* Orbitofrontal thickness, retention of fear extinction, and extraversion. *Neuroreport* **16**, 1909–1912 (2005).
69. Kozorovitskiy, Y. *et al.* Experience induces structural and biochemical changes in the adult primate brain. *Proc. Natl. Acad. Sci. USA* **102**, 17478–17482 (2005).
70. Lupien, S.J., McEwen, B.S., Gunnar, M.R. & Heim, C. Effects of stress throughout the lifespan on the brain, behaviour and cognition. *Nat. Rev. Neurosci.* **10**, 434–445 (2009).
71. Vialou, V. *et al.* DeltaFosB in brain reward circuits mediates resilience to stress and antidepressant responses. *Nat. Neurosci.* **13**, 745–752 (2010).
72. Vialou, V. *et al.* Serum response factor promotes resilience to chronic social stress through the induction of DeltaFosB. *J. Neurosci.* **30**, 14585–14592 (2010).
73. Cao, J.L. *et al.* Mesolimbic dopamine neurons in the brain reward circuit mediate susceptibility to social defeat and antidepressant action. *J. Neurosci.* **30**, 16453–16458 (2010).
74. Goto, Y., Otani, S. & Grace, A.A. The Yin and Yang of dopamine release: a new perspective. *Neuropharmacology* **53**, 583–587 (2007).

75. Grace, A.A., Floresco, S.B., Goto, Y. & Lodge, D.J. Regulation of firing of dopaminergic neurons and control of goal-directed behaviors. *Trends Neurosci.* **30**, 220–227 (2007).
76. Brischoux, F., Chakraborty, S., Brierley, D.I. & Ungless, M.A. Phasic excitation of dopamine neurons in ventral VTA by noxious stimuli. *Proc. Natl. Acad. Sci. USA* **106**, 4894–4899 (2009).
77. Lammel, S., Ion, D.I., Roeper, J. & Malenka, R.C. Projection-specific modulation of dopamine neuron synapses by aversive and rewarding stimuli. *Neuron* **70**, 855–862 (2011).
78. Shumake, J., Ilango, A., Scheich, H., Wetzell, W. & Ohl, F.W. Differential neuromodulation of acquisition and retrieval of avoidance learning by the lateral habenula and ventral tegmental area. *J. Neurosci.* **30**, 5876–5883 (2010).
79. Lüscher, C. & Slesinger, P.A. Emerging roles for G protein-gated inwardly rectifying potassium (GIRK) channels in health and disease. *Nat. Rev. Neurosci.* **11**, 301–315 (2010).
80. Balana, B. *et al.* Mechanism underlying selective regulation of G protein-gated inwardly rectifying potassium channels by the psychostimulant-sensitive sorting nexin 27. *Proc. Natl. Acad. Sci. USA* **108**, 5831–5836 (2011).
81. Weaver, I.C. *et al.* Reversal of maternal programming of stress responses in adult offspring through methyl supplementation: altering epigenetic marking later in life. *J. Neurosci.* **25**, 11045–11054 (2005).
82. Meaney, M.J. & Szyf, M. Environmental programming of stress responses through DNA methylation: life at the interface between a dynamic environment and a fixed genome. *Dialogues Clin. Neurosci.* **7**, 103–123 (2005).
83. Elliott, E., Ezra-Nevo, G., Regev, L., Neufeld-Cohen, A. & Chen, A. Resilience to social stress coincides with functional DNA methylation of the *Crf* gene in adult mice. *Nat. Neurosci.* **13**, 1351–1353 (2010).
84. Moncek, F., Duncko, R., Johansson, B.B. & Jezova, D. Effect of environmental enrichment on stress related systems in rats. *J. Neuroendocrinol.* **16**, 423–431 (2004).
85. LaPlant, Q. *et al.* Role of nuclear factor κ B in ovarian hormone-mediated stress hypersensitivity in female mice. *Biol. Psychiatry* **65**, 874–880 (2009).
86. Conrad, C.D., Grote, K.A., Hobbs, R.J. & Ferayorni, A. Sex differences in spatial and non-spatial Y-maze performance after chronic stress. *Neurobiol. Learn. Mem.* **79**, 32–40 (2003).
87. Galea, L.A. *et al.* Sex differences in dendritic atrophy of CA3 pyramidal neurons in response to chronic restraint stress. *Neuroscience* **81**, 689–697 (1997).
88. Bowman, R.E., Beck, K.D. & Luine, V.N. Chronic stress effects on memory: sex differences in performance and monoaminergic activity. *Horm. Behav.* **43**, 48–59 (2003).
89. Wood, G.E. & Shors, T.J. Stress facilitates classical conditioning in males, but impairs classical conditioning in females through activational effects of ovarian hormones. *Proc. Natl. Acad. Sci. USA* **95**, 4066–4071 (1998).
90. Wood, G.E., Beylin, A.V. & Shors, T.J. The contribution of adrenal and reproductive hormones to the opposing effects of stress on trace conditioning in males versus females. *Behav. Neurosci.* **115**, 175–187 (2001).
91. Autry, A.E., Adachi, M., Cheng, P. & Monteggia, L.M. Gender-specific impact of brain-derived neurotrophic factor signaling on stress-induced depression-like behavior. *Biol. Psychiatry* **66**, 84–90 (2009).
92. Bowman, R.E., Ferguson, D. & Luine, V.N. Effects of chronic restraint stress and estradiol on open field activity, spatial memory, and monoaminergic neurotransmitters in ovariectomized rats. *Neuroscience* **113**, 401–410 (2002).
93. Douglas, A.J., Brunton, P.J., Bosch, O.J., Russell, J.A. & Neumann, I.D. Neuroendocrine responses to stress in mice: hyporesponsiveness in pregnancy and parturition. *Endocrinology* **144**, 5268–5276 (2003).
94. Wilkinson, M.B. *et al.* A novel role of the WNT-dishevelled-GSK3 β signaling cascade in the mouse nucleus accumbens in a social defeat model of depression. *J. Neurosci.* **31**, 9084–9092 (2011).
95. Binder, E.B. *et al.* Association of FKBP5 polymorphisms and childhood abuse with risk of posttraumatic stress disorder symptoms in adults. *J. Am. Med. Assoc.* **299**, 1291–1305 (2008).
96. Ressler, K.J. *et al.* Post-traumatic stress disorder is associated with PACAP and the PAC1 receptor. *Nature* **470**, 492–497 (2011).
97. Polanczyk, G. *et al.* Protective effect of CRHR1 gene variants on the development of adult depression following childhood maltreatment: replication and extension. *Arch. Gen. Psychiatry* **66**, 978–985 (2009).
98. Stein, M.B., Campbell-Sills, L. & Gelernter, J. Genetic variation in 5HTTLPR is associated with emotional resilience. *Am. J. Med. Genet. B. Neuropsychiatr. Genet.* **150B**, 900–906 (2009).
99. Murrough, J.W. & Charney, D.S. The serotonin transporter and emotionality: risk, resilience, and new therapeutic opportunities. *Biol. Psychiatry* **69**, 510–512 (2011).
100. Domschke, K. *et al.* Neuropeptide Y (NPY) gene: impact on emotional processing and treatment response in anxious depression. *Eur. Neuropsychopharmacol.* **20**, 301–309 (2010).