

Storia dell'arte medioevale
corso di laurea in Lettere (triennio)
aa 2019-2020
Prof.ssa Sonia Chiodo

Pittura e miniatura a Firenze 1300-1350

8. Giotto tra innovazione e invenzione: i cicli ad affresco

FIRENZE, Santa Croce,
cappelle Peruzzi e Bardi









gettyimages®
Mondadori Portfolio

25 YEARS





gettyimages | 25 YEARS
Mondadori Portfolio









gettyimages®
Mondadori Portfolio

25 YEARS



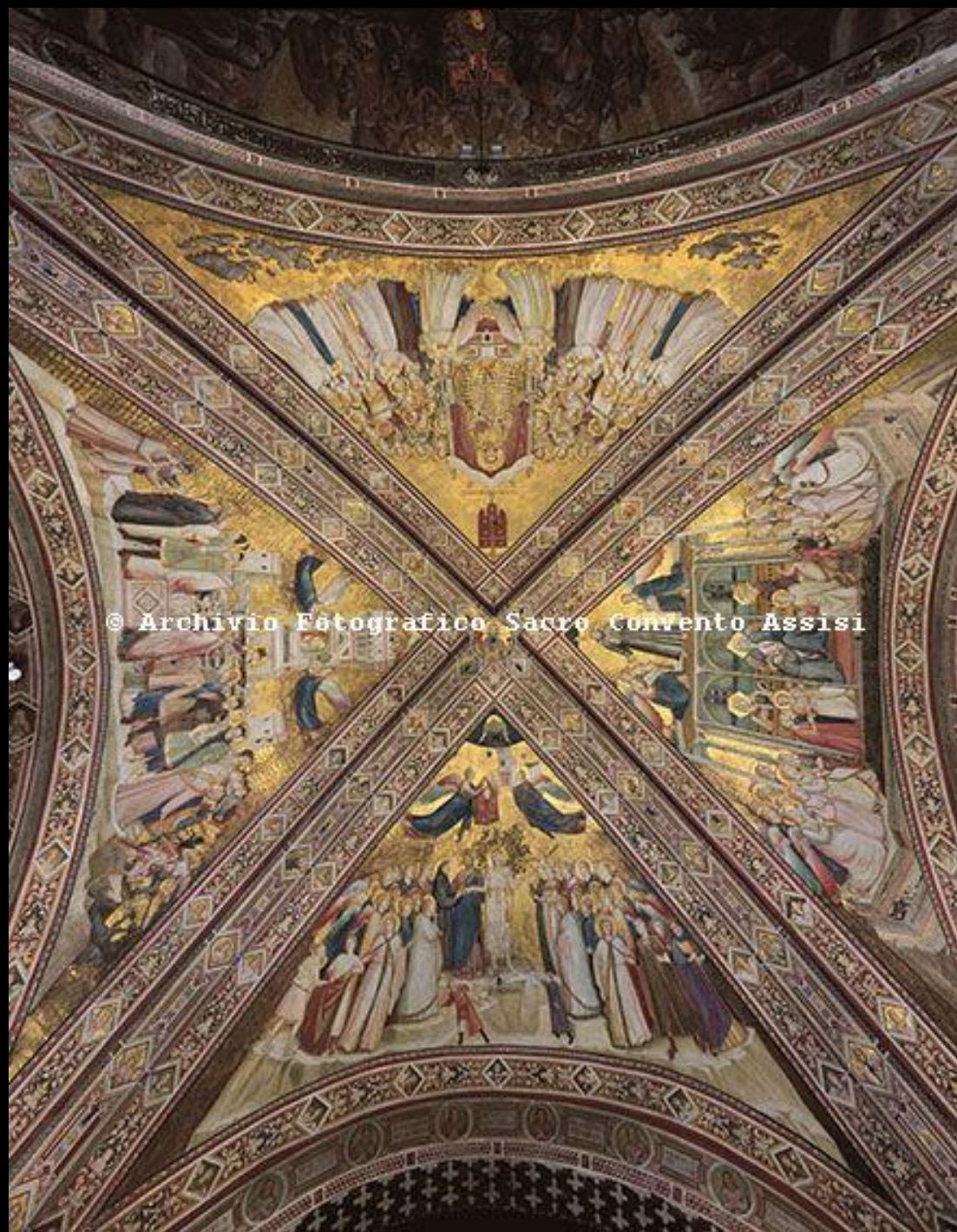


gettyimages®
Mondadori Portfolio

25 YEARS



ASSISI, Basilica
inferiore di San
Francesco



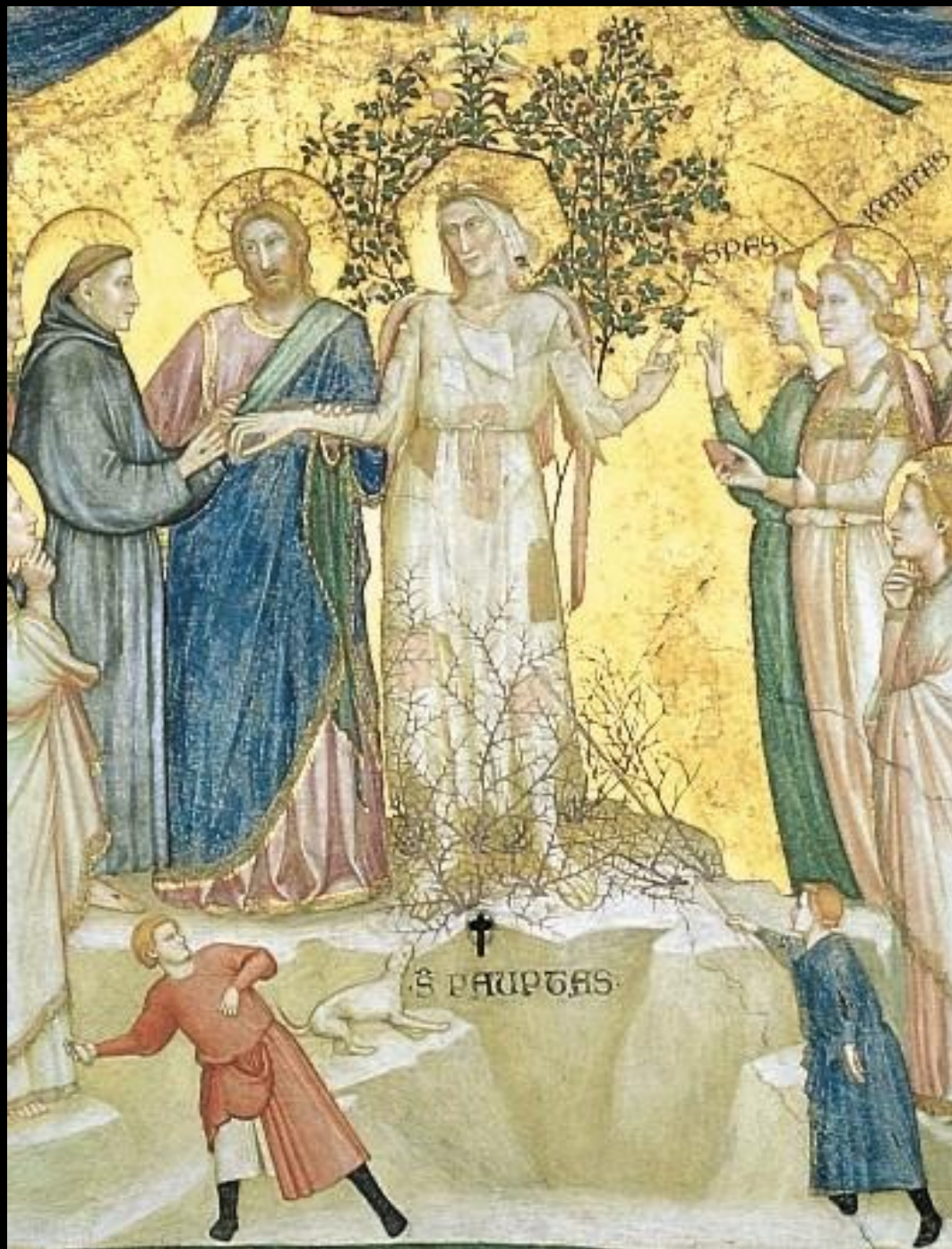
© Archivio Fotografico Sacro Convento Assisi



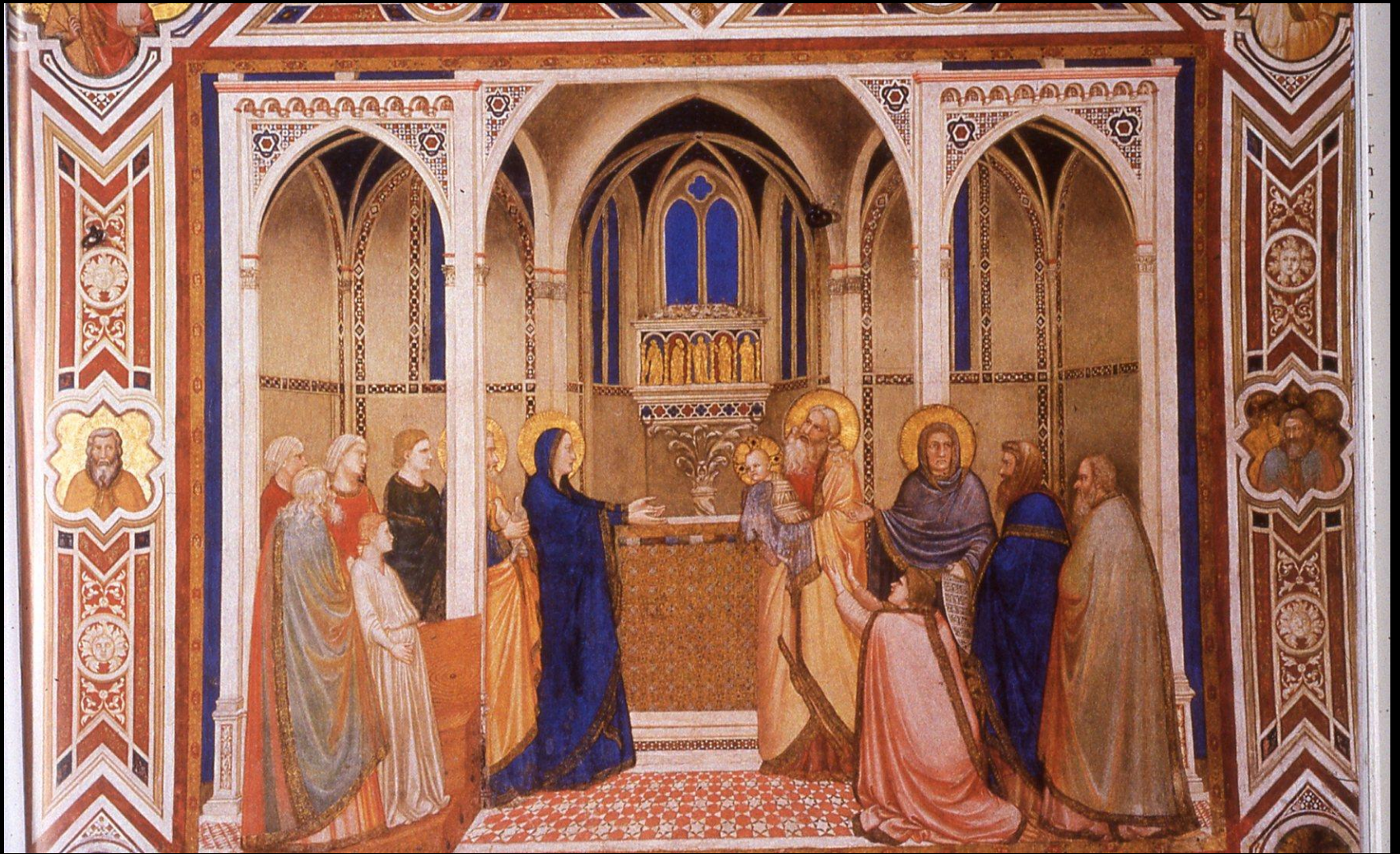


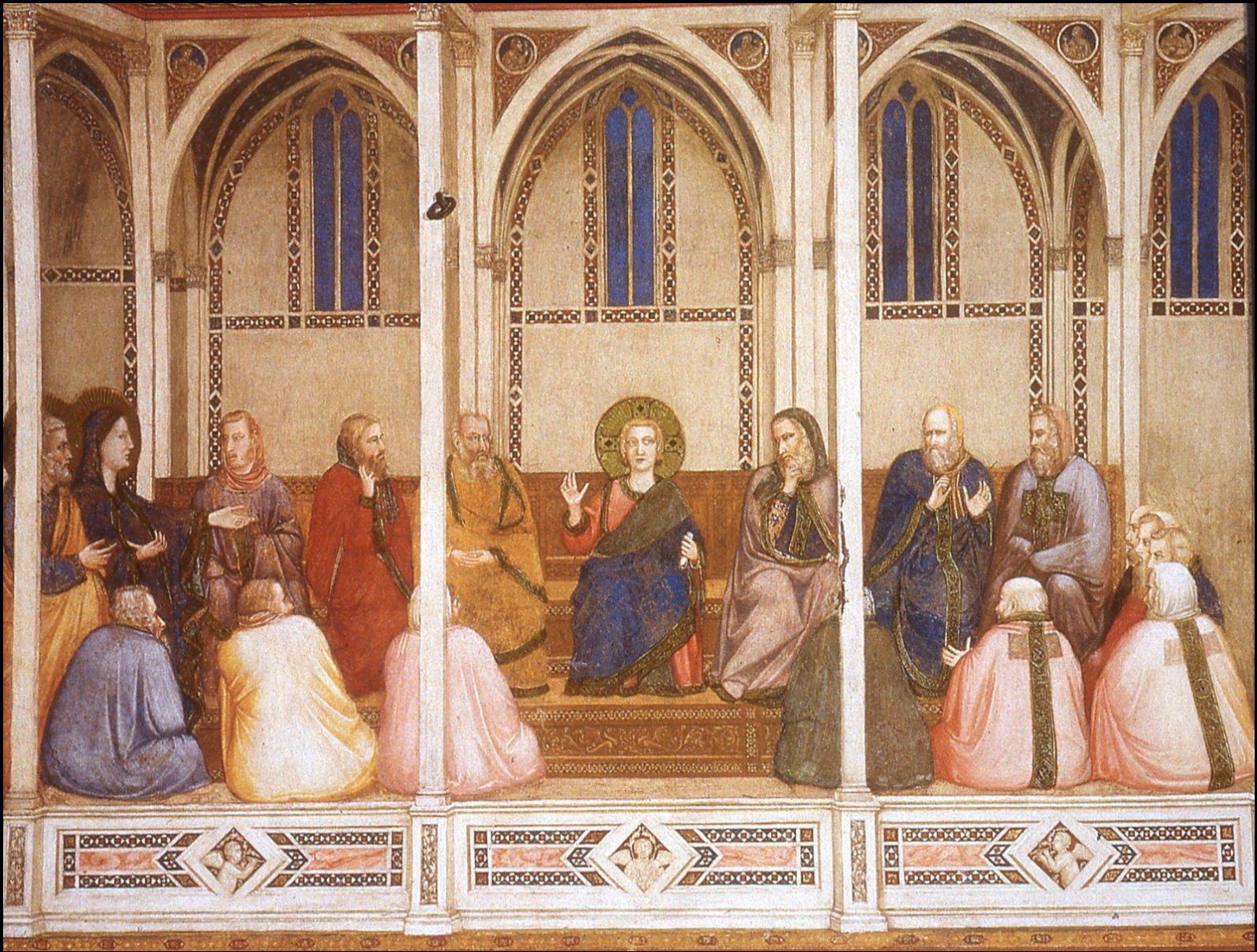
© Archivio Fotografico Sacro Convento Assisi









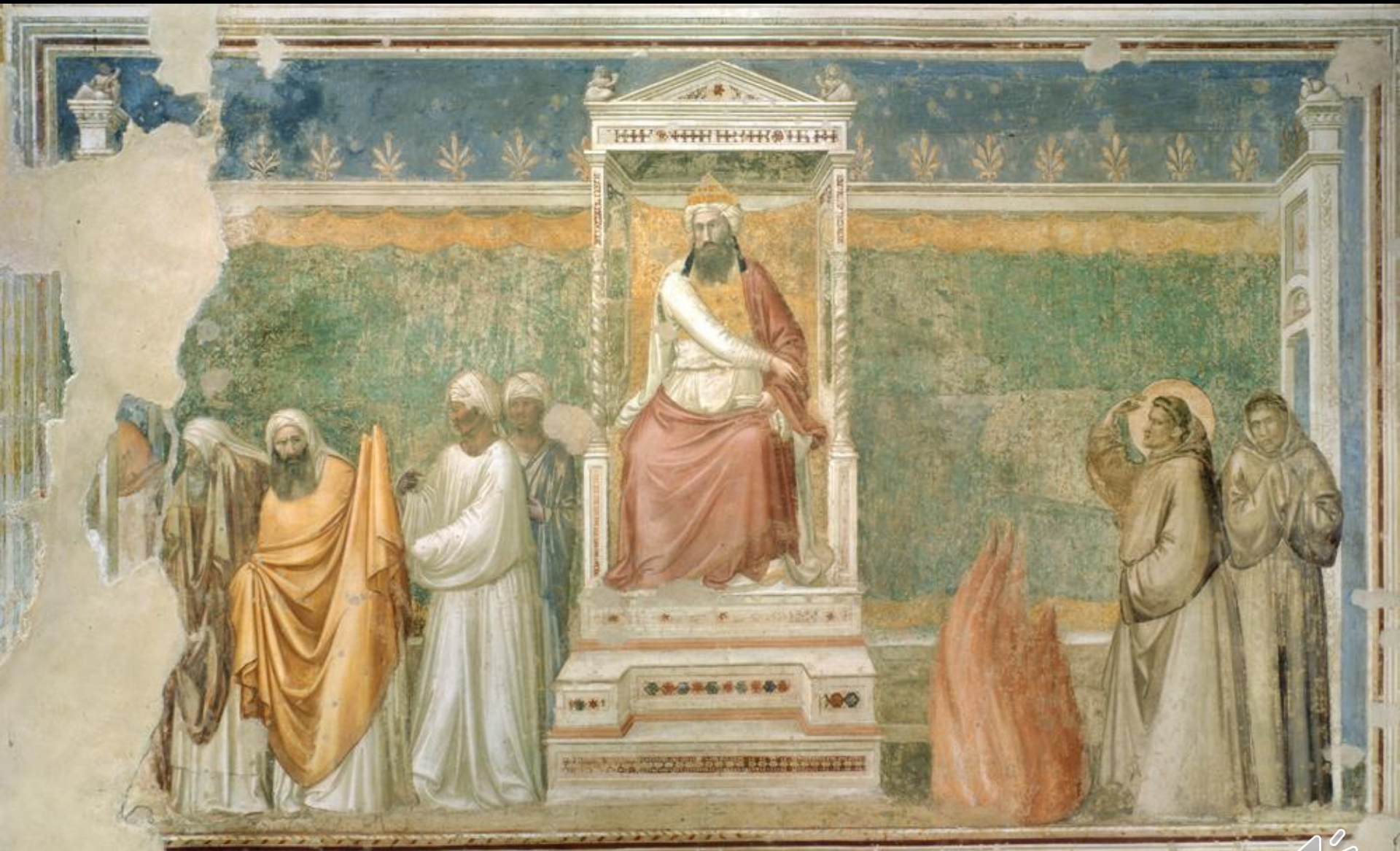


FIRENZE, Santa Croce, cappella Bardi









FIRENZE, Palazzo del Bargello, cappella della Maddalena



