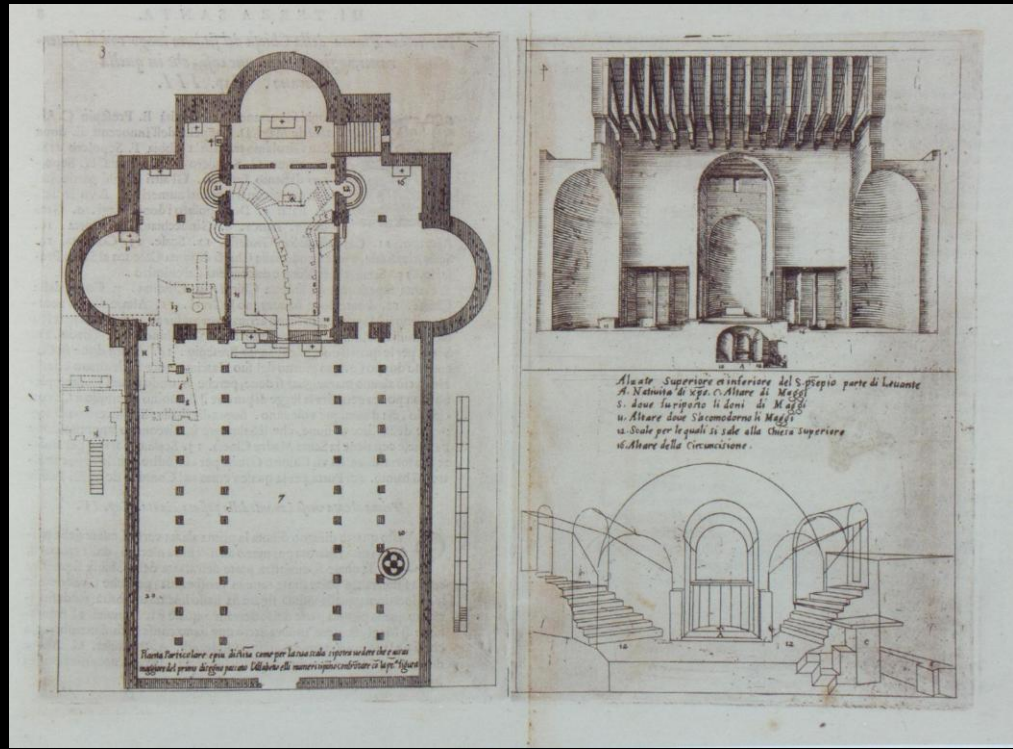
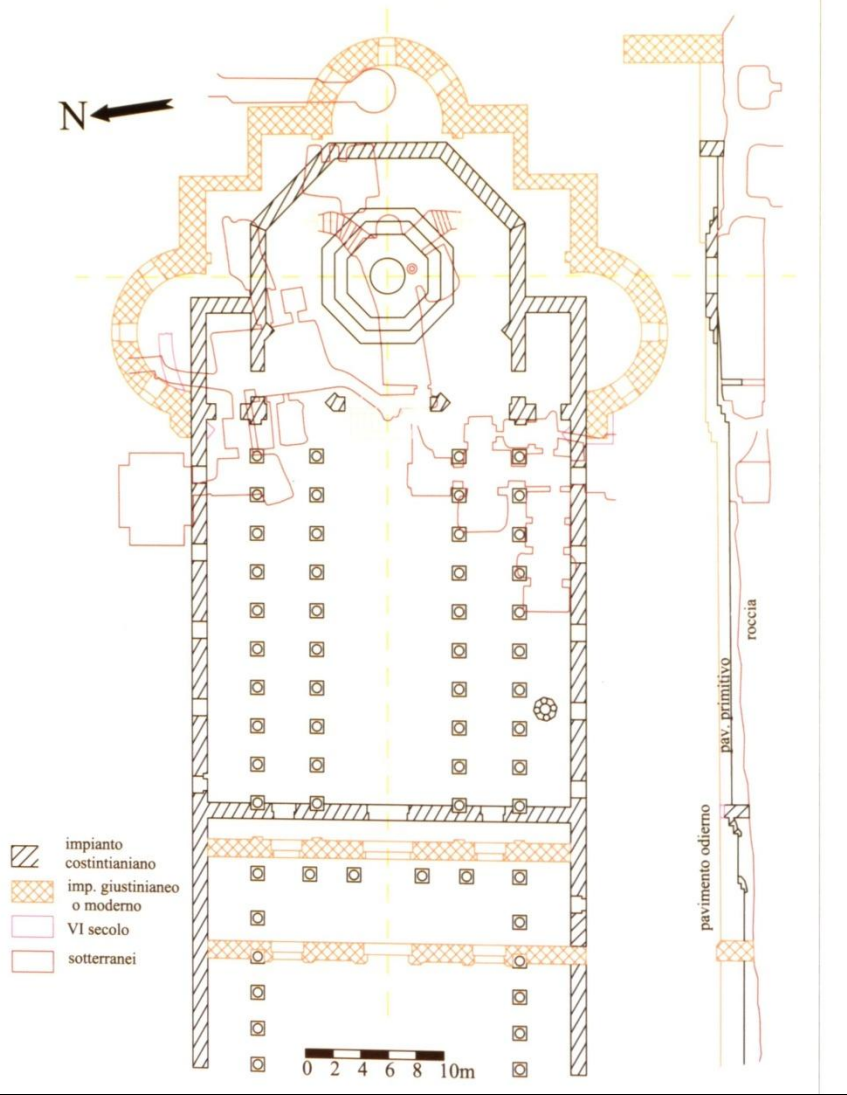
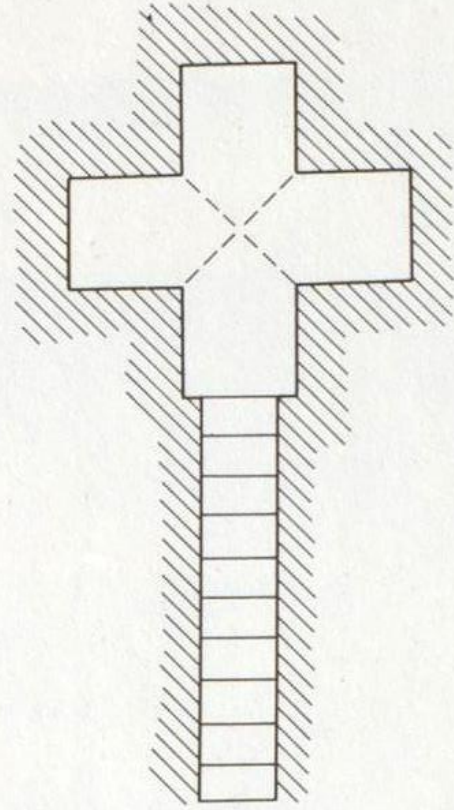


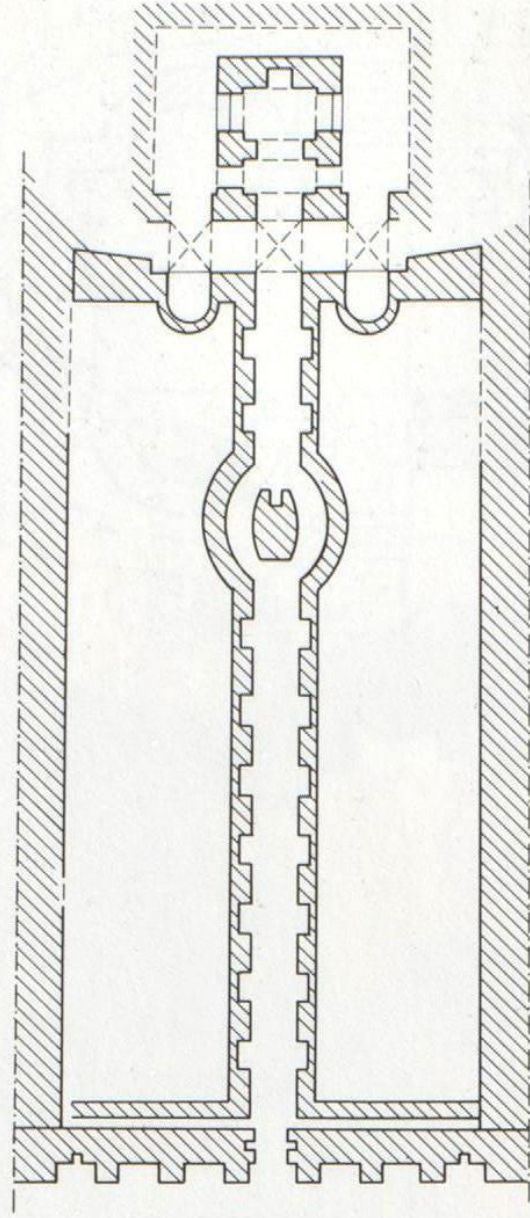
*La cripta 'ad oratorio' come tipologia
architettonica e le sue fonti di ispirazione
orientali*

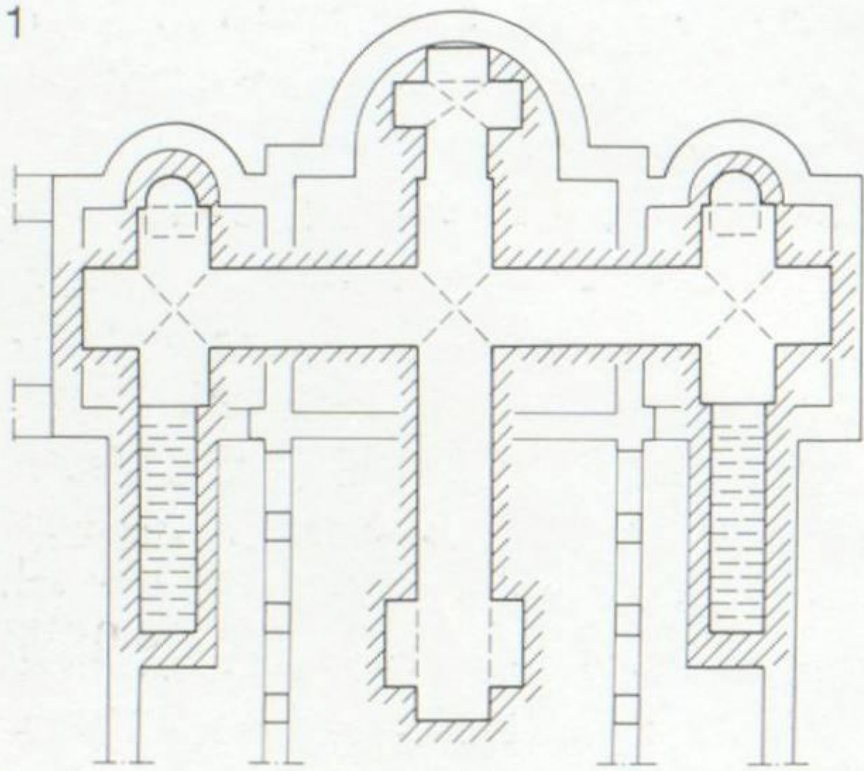
Guido Tigler

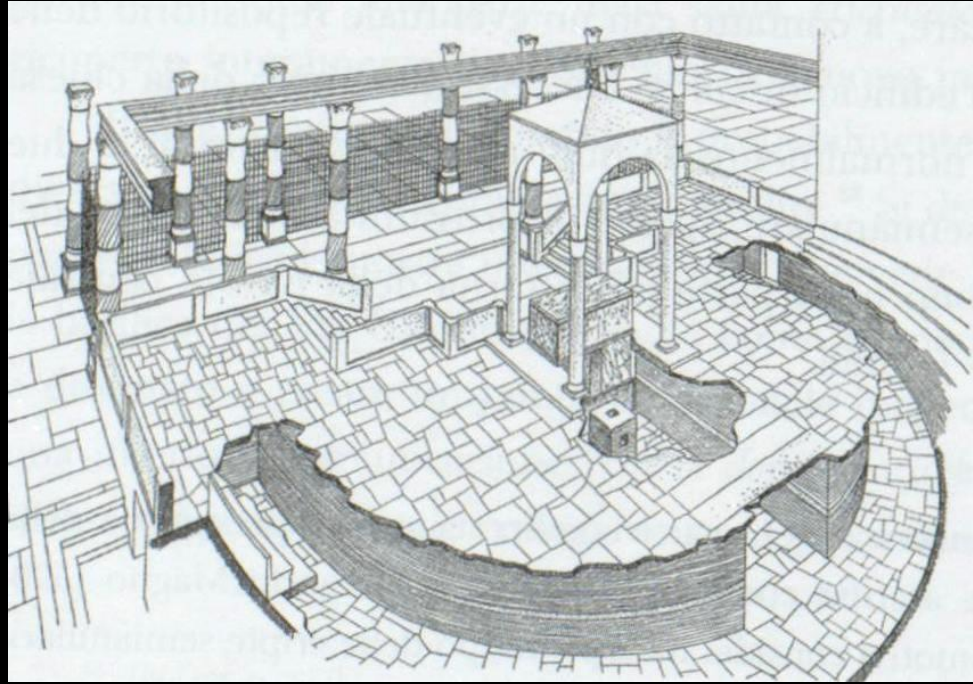
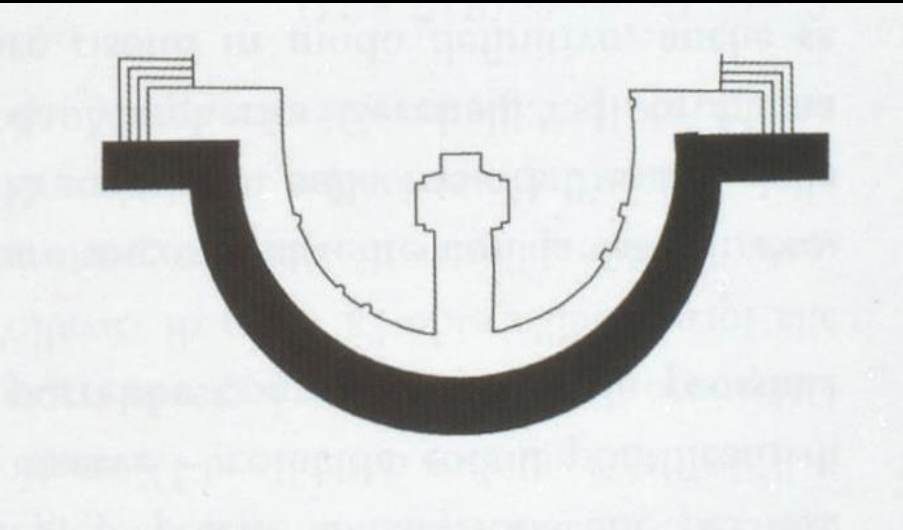


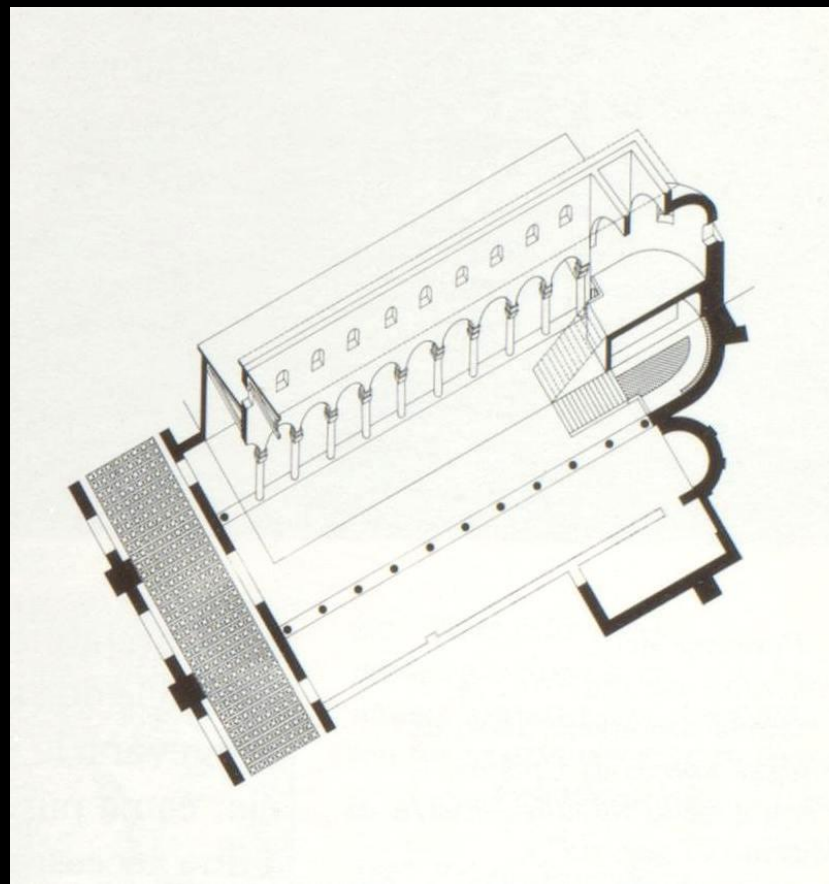
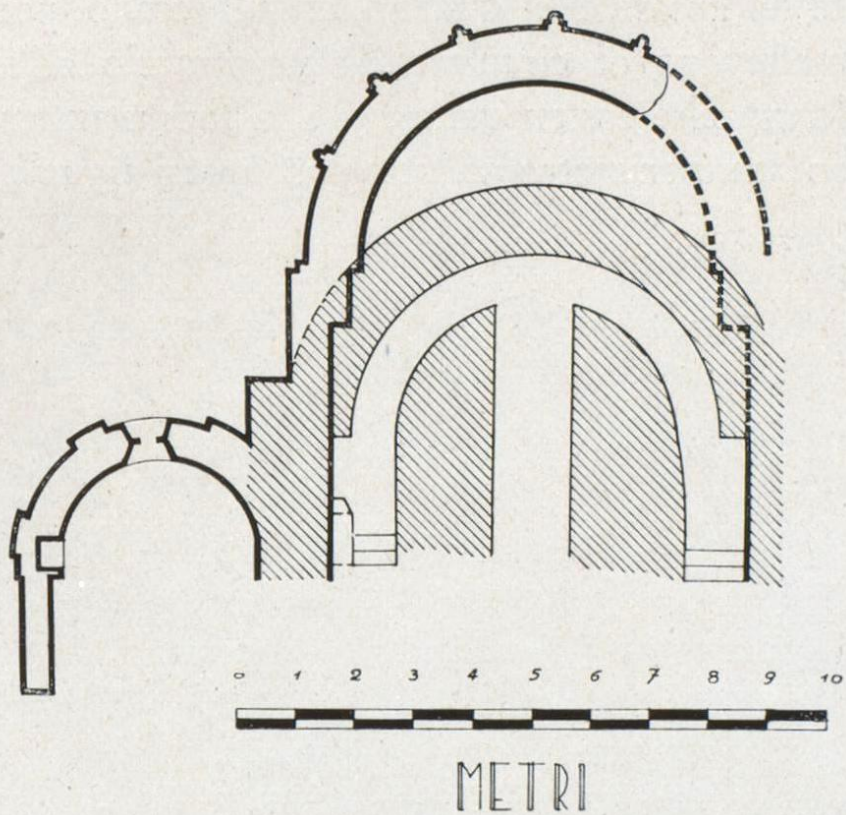


4



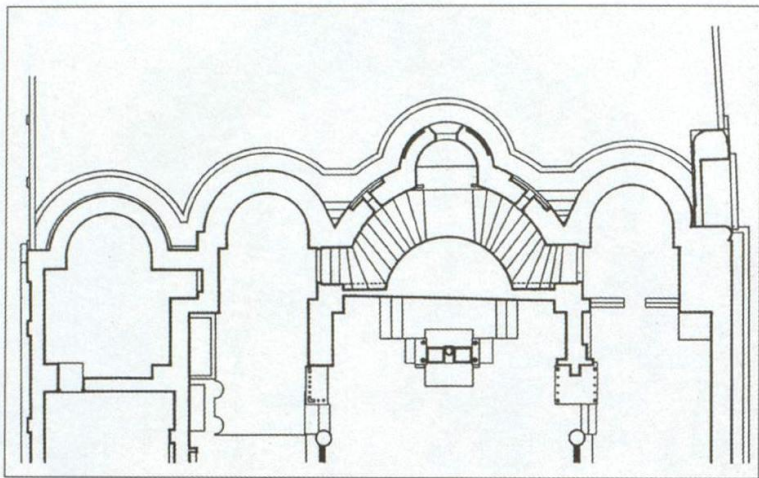




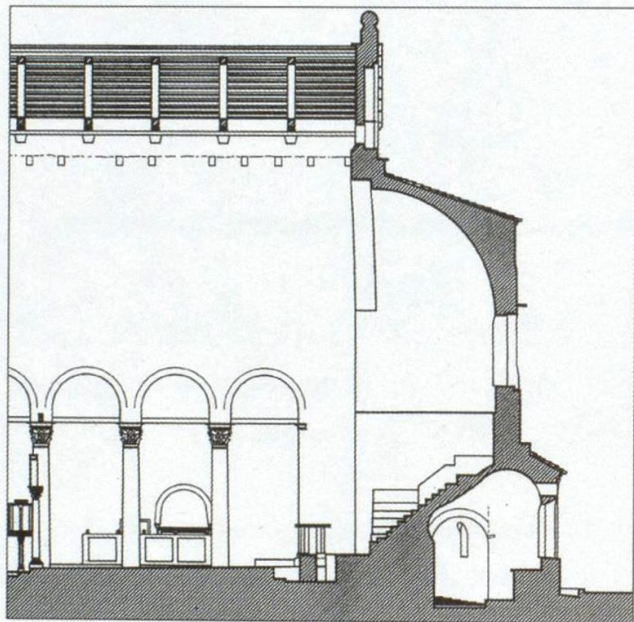




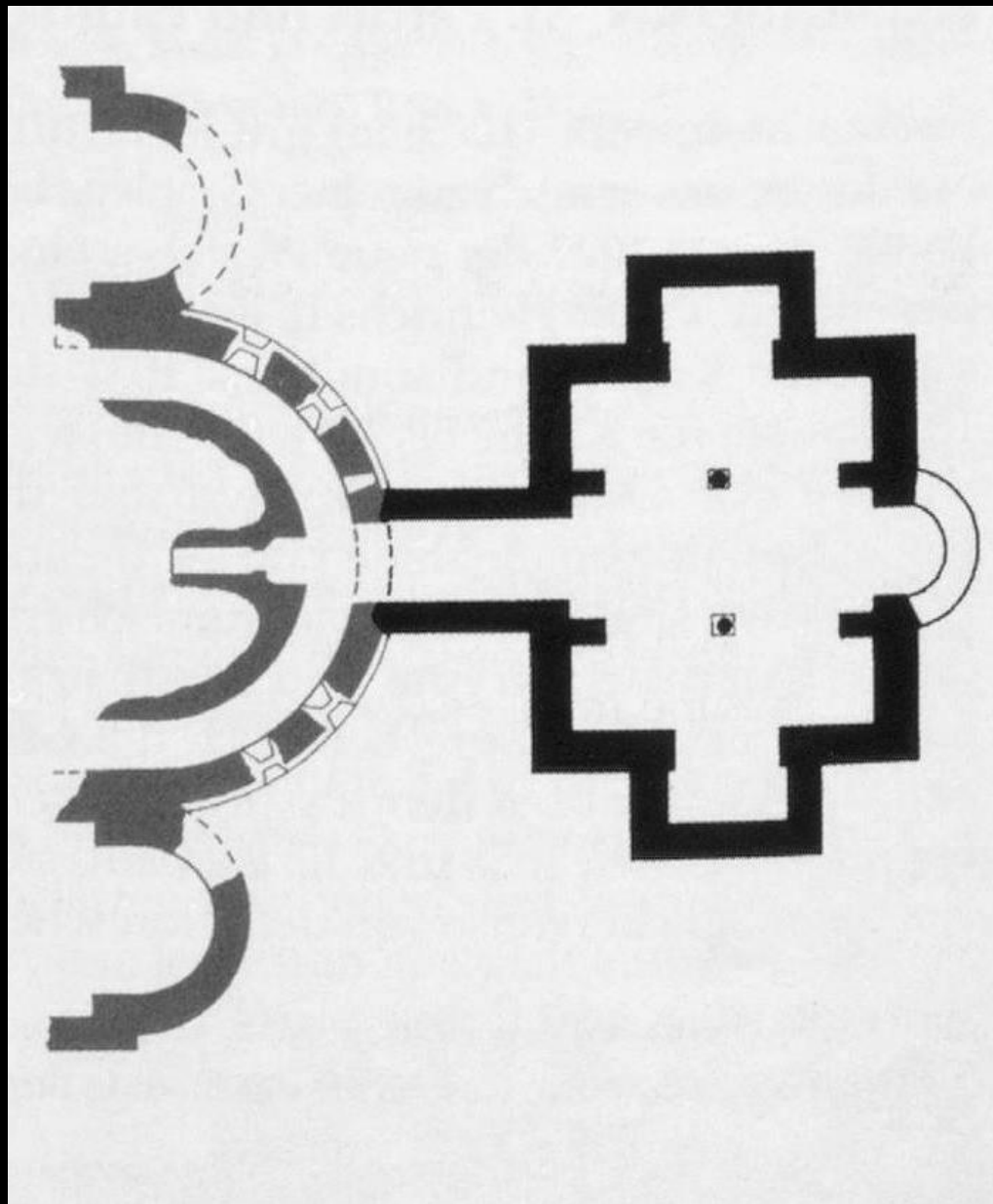




3. East end, ground plan at crypt level.



4. East end cross section of crypt.



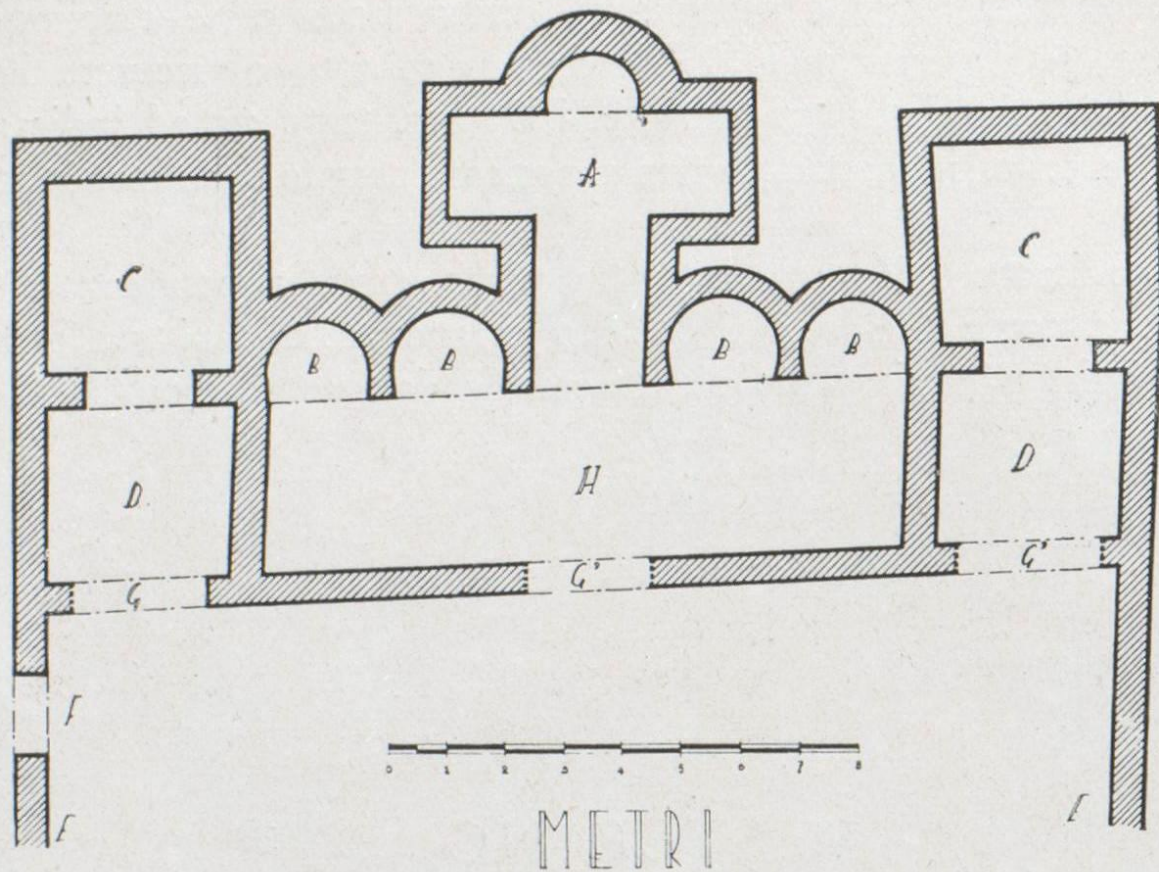


Fig. 54 - Bologna. Antico santuario in S. Stefano
(Scavi Belvideri e Donini)

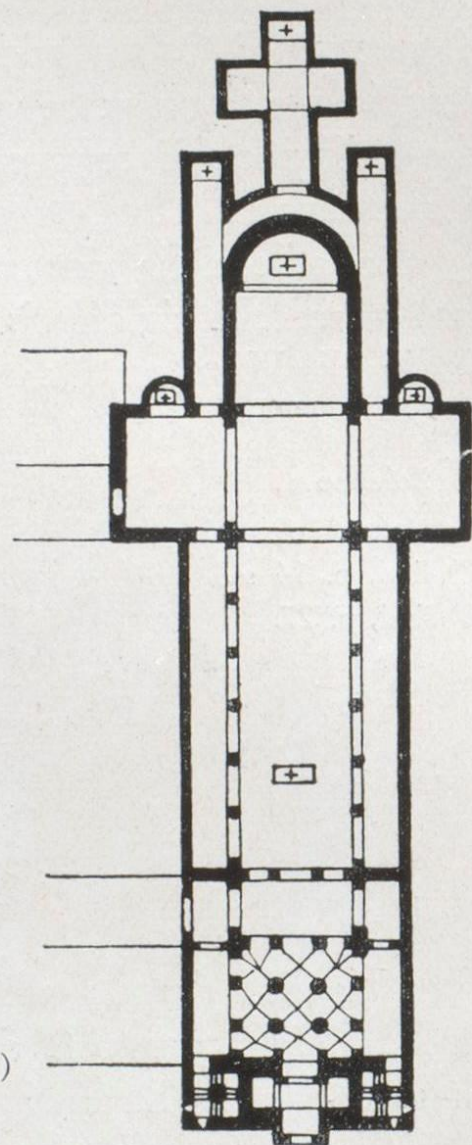
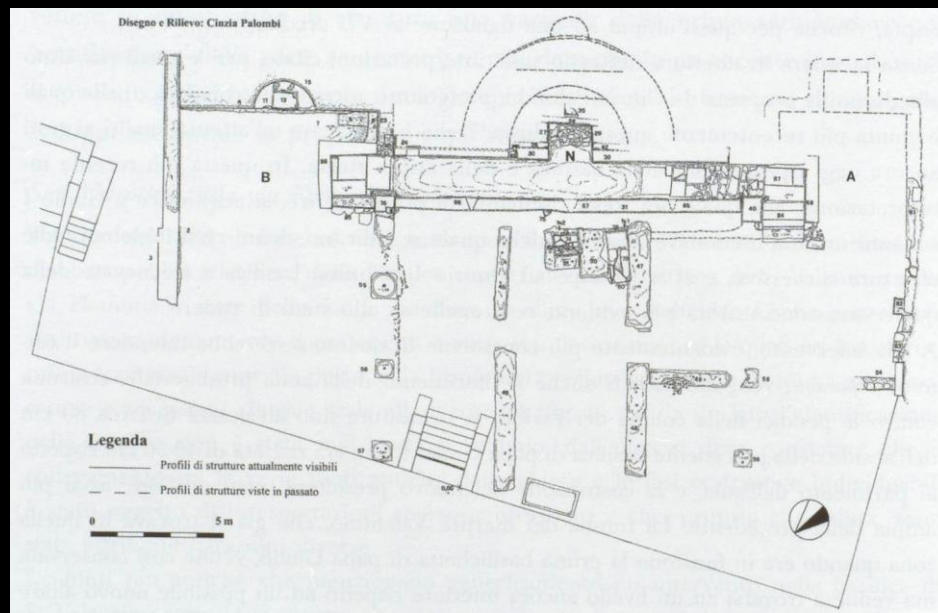
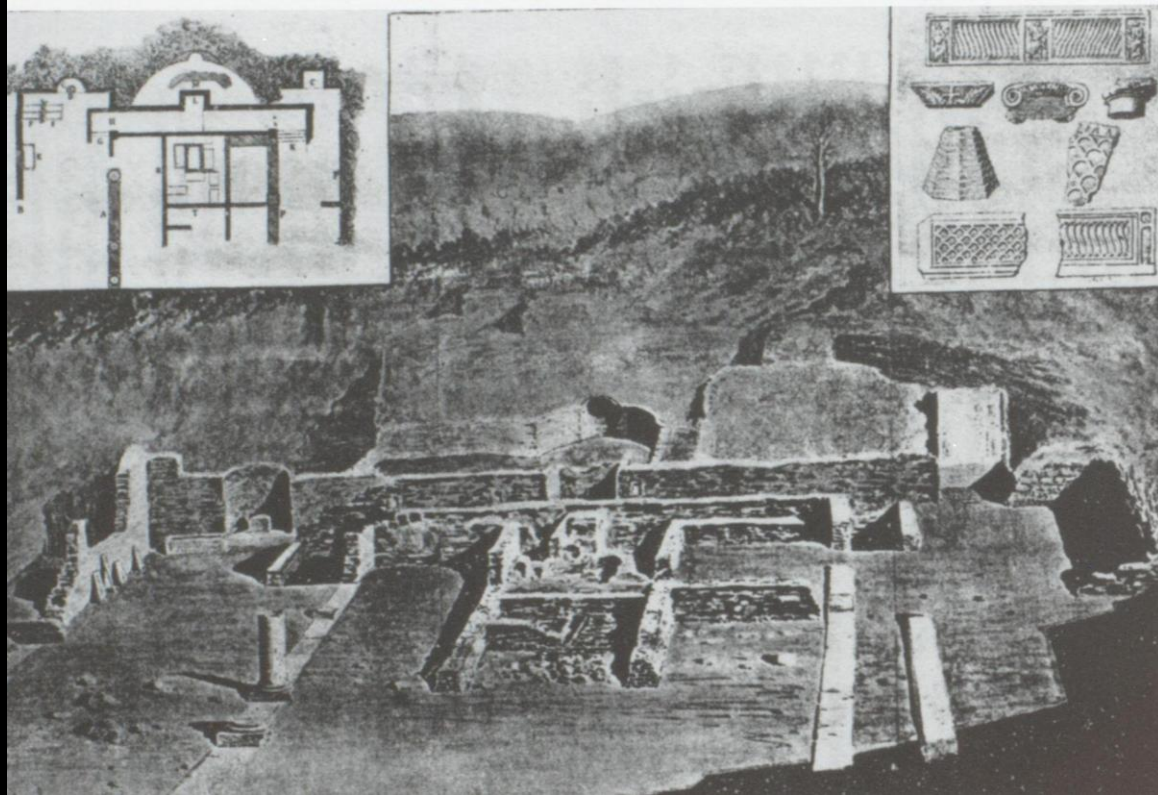
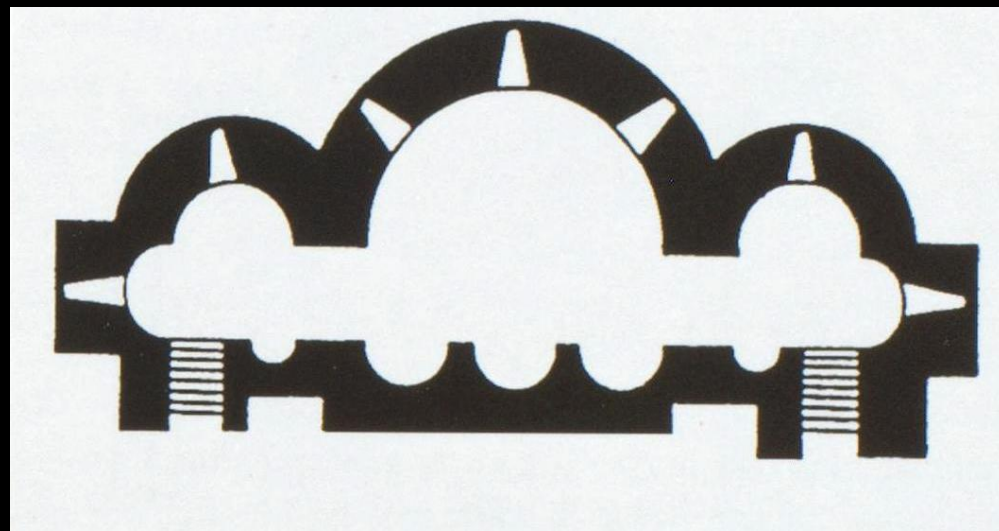
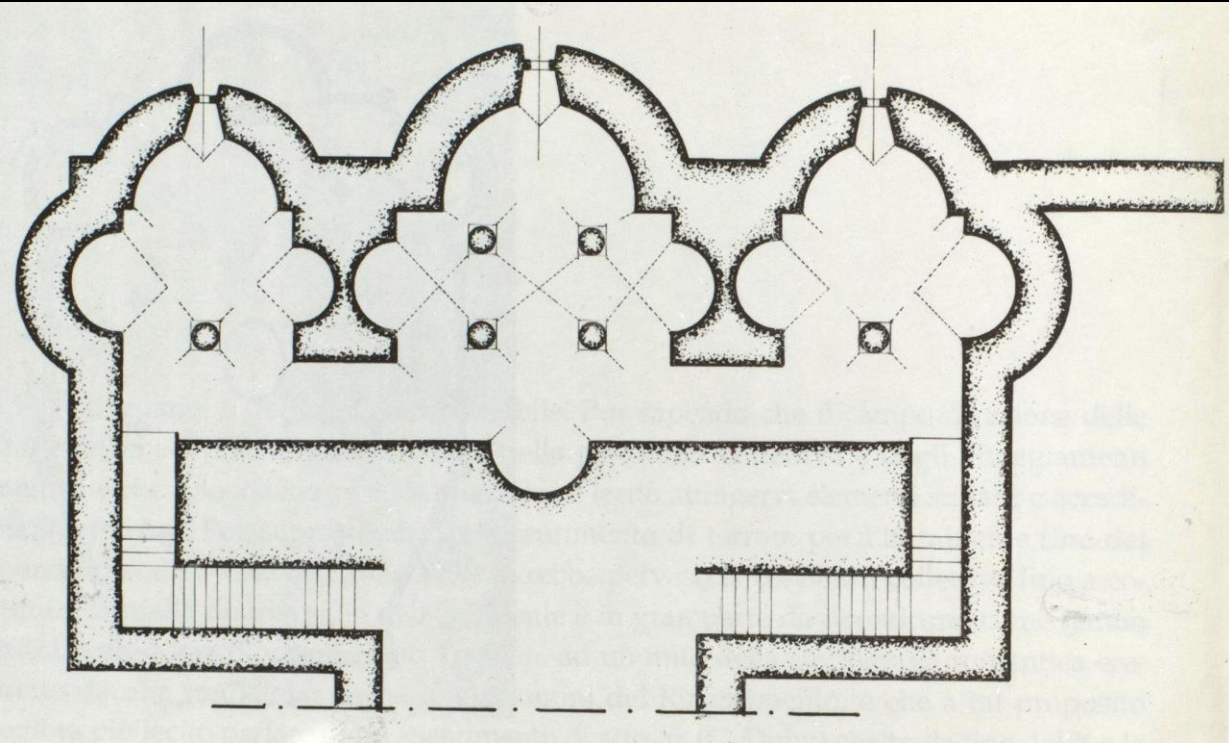
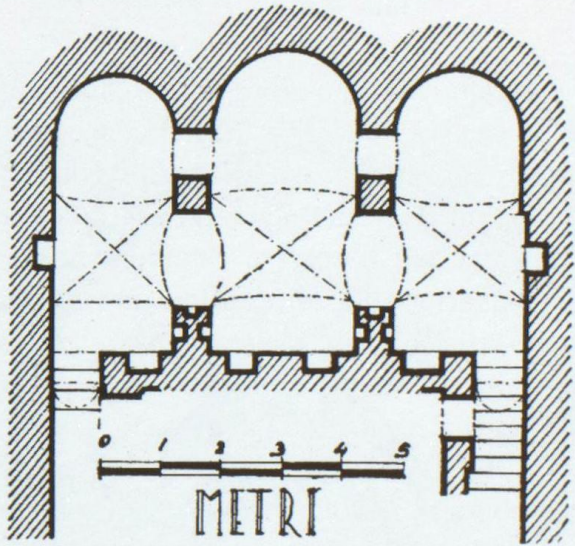


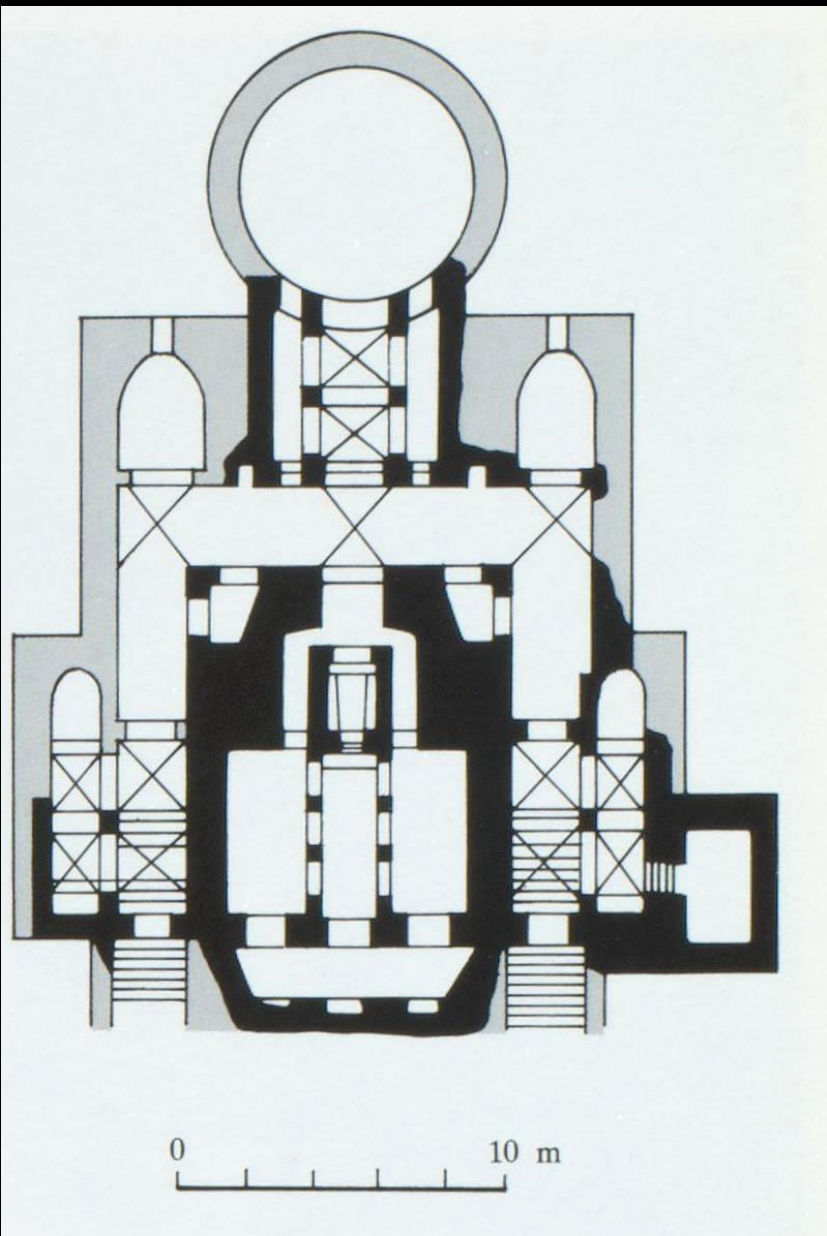
Fig. 55 - Corvey (Vestfalia)
Antica Abbaziale
(Dal Gall)



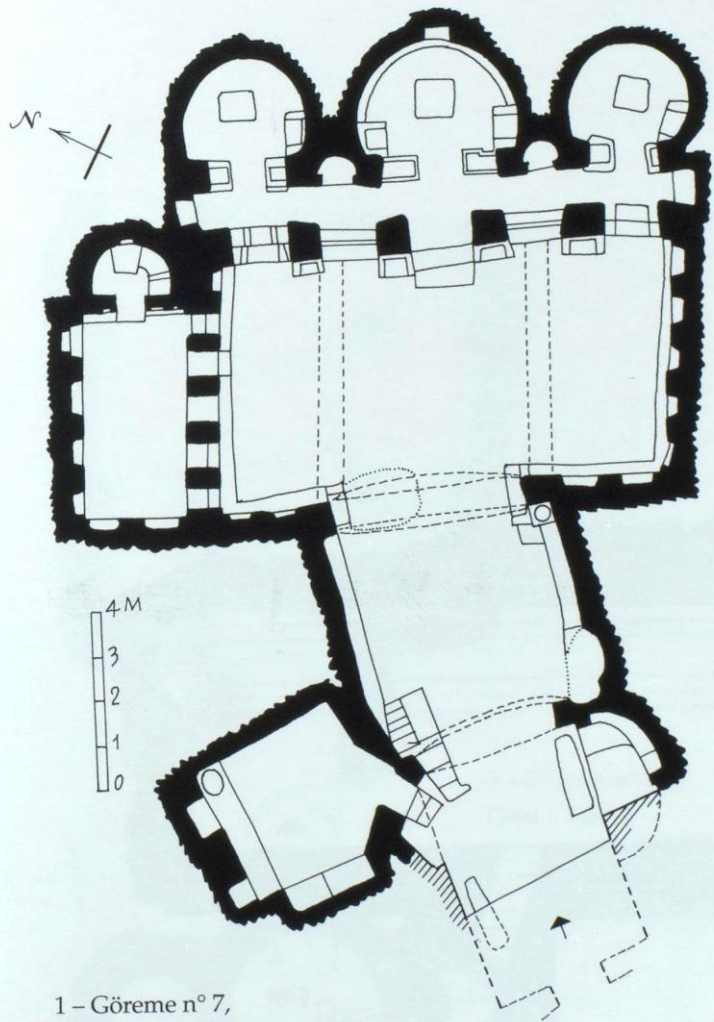








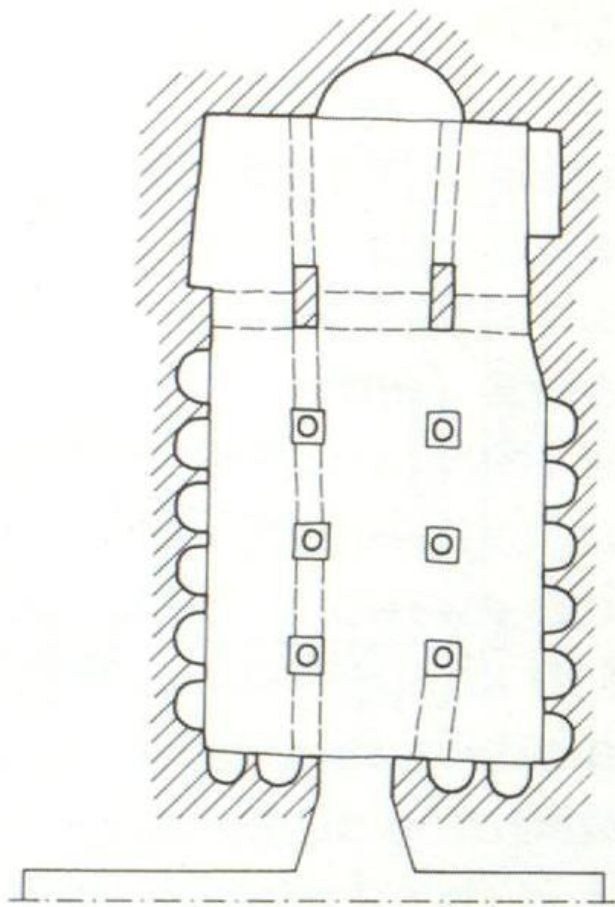




1 - Göreme n° 7,





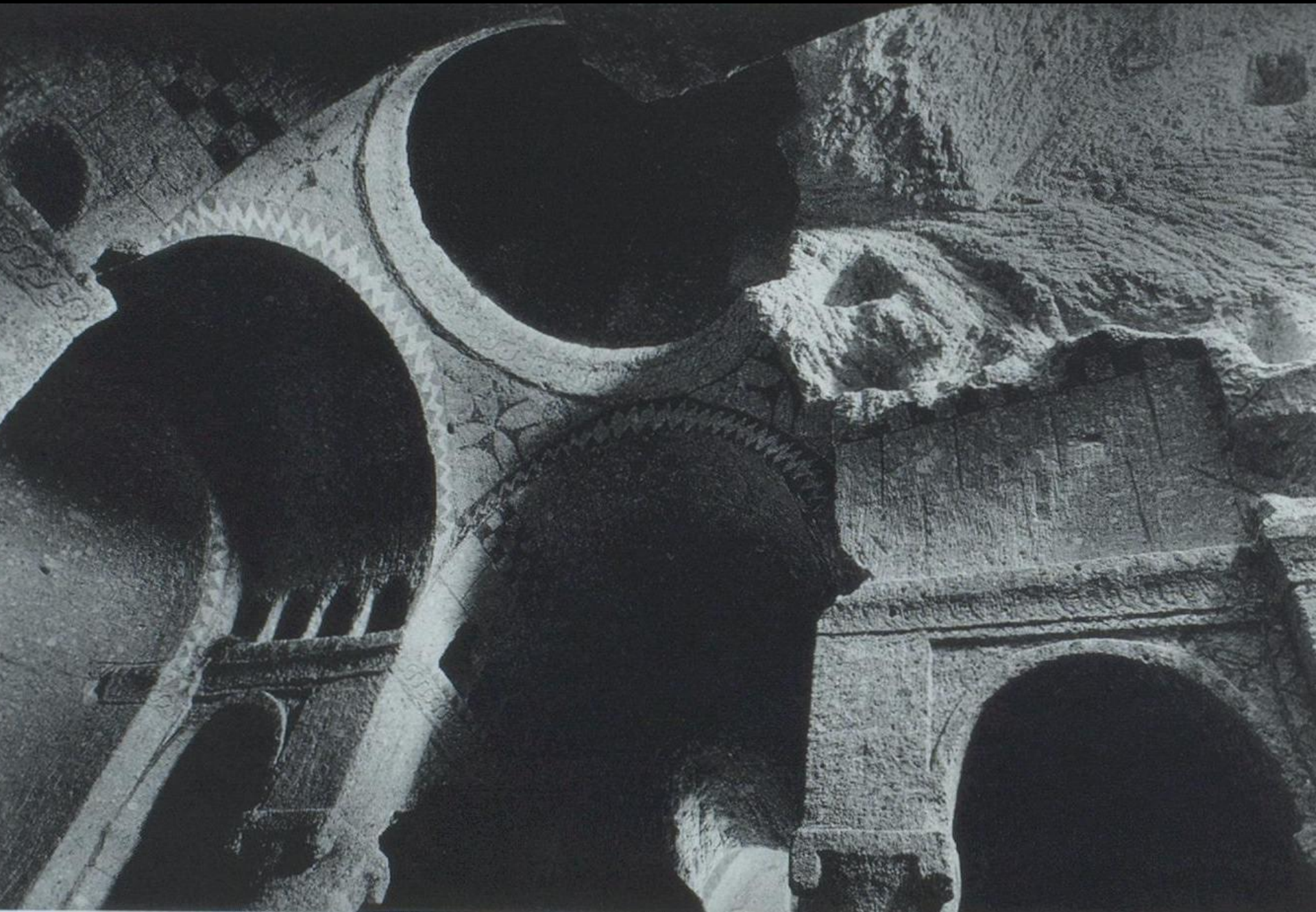


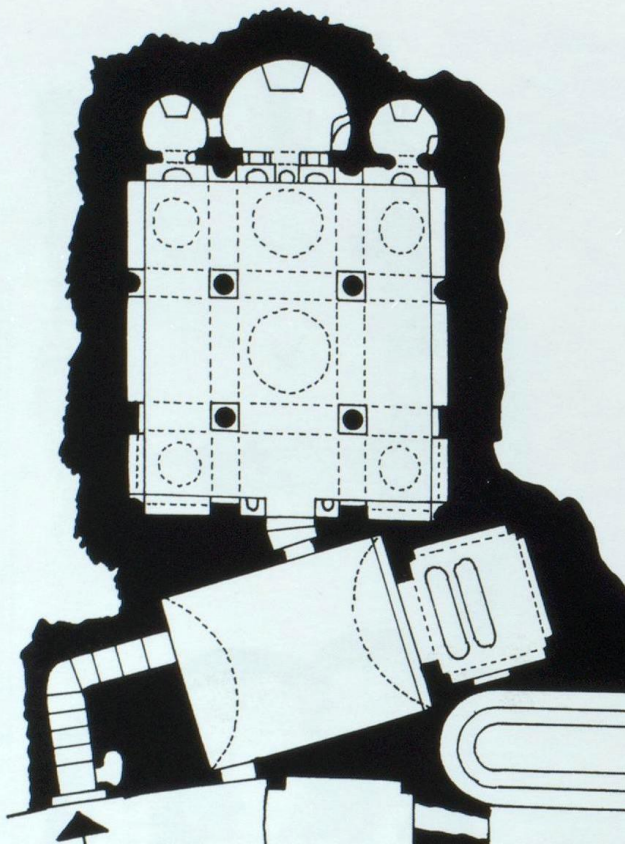




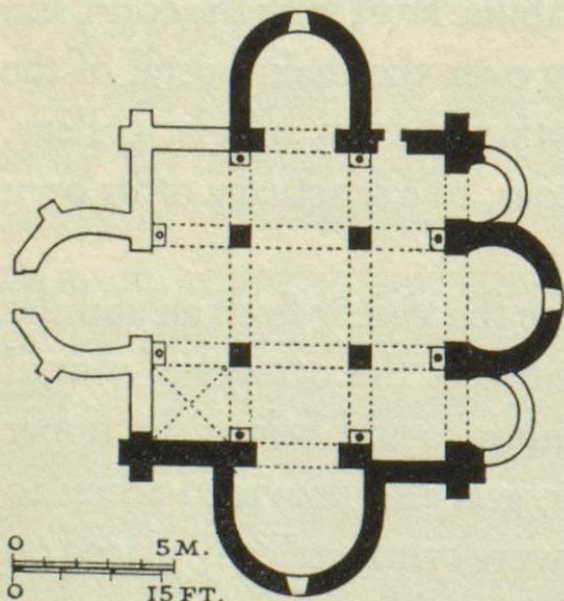
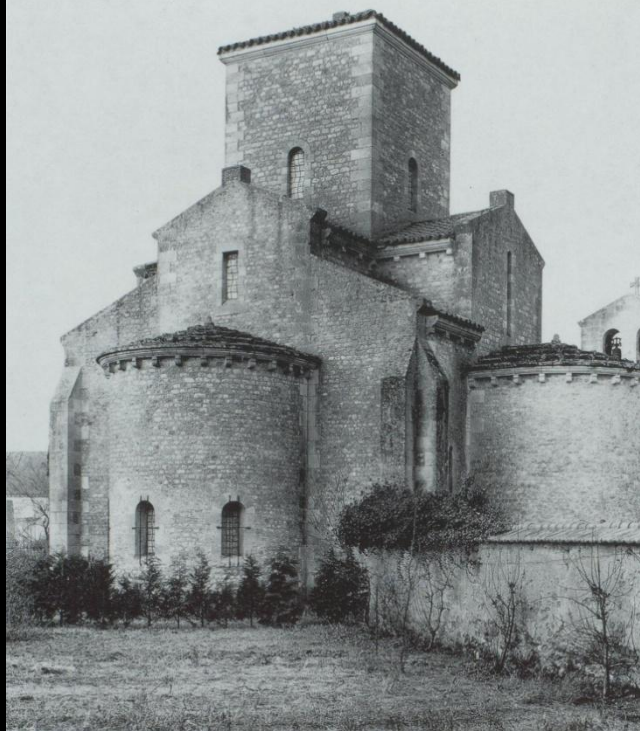


LOCVSSEPTENTRIONIS
INSAVIAEIDEAEVRSACI
POSSEDEITONGAVERSELYA

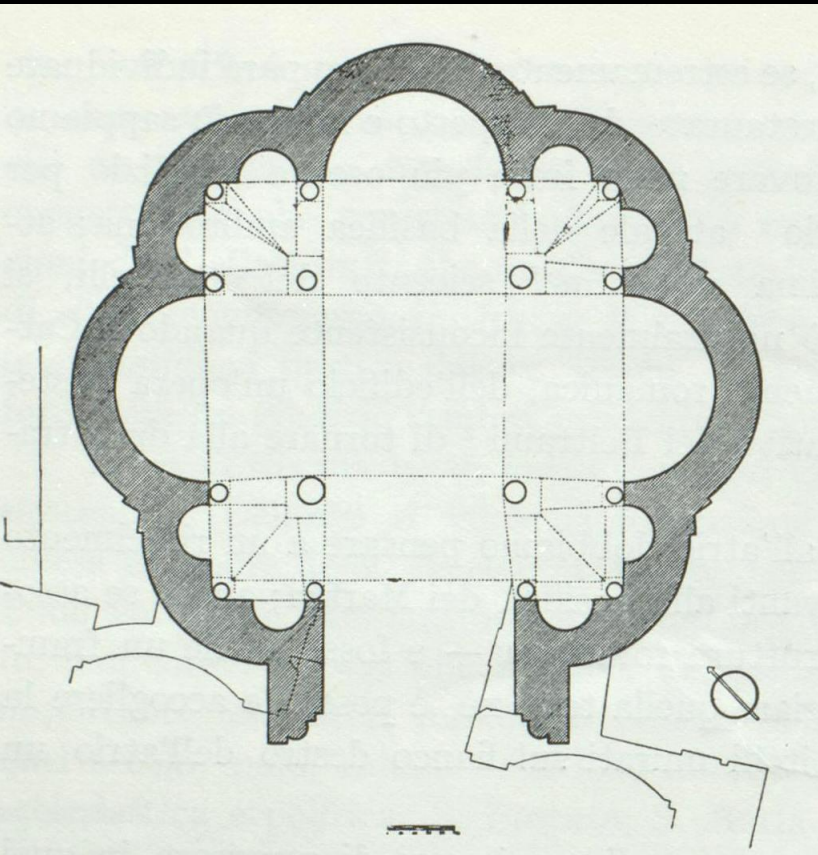


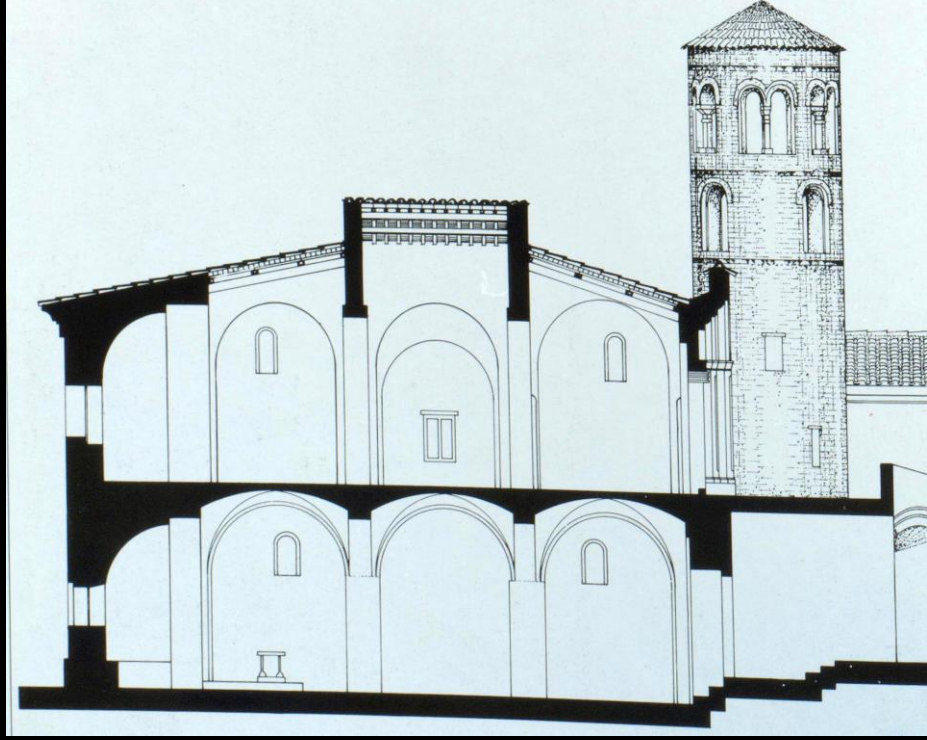
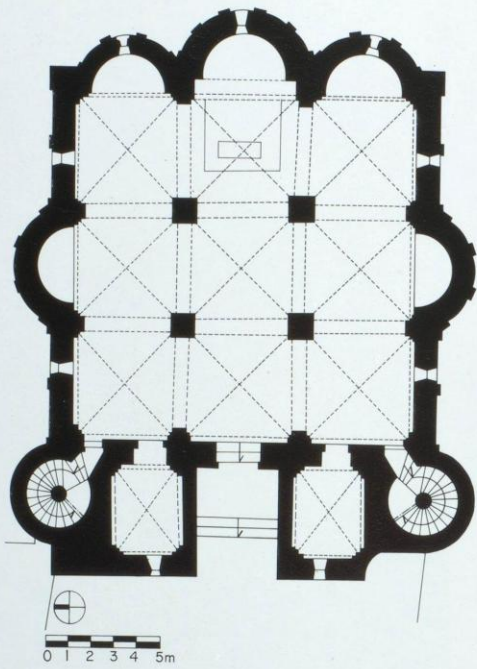






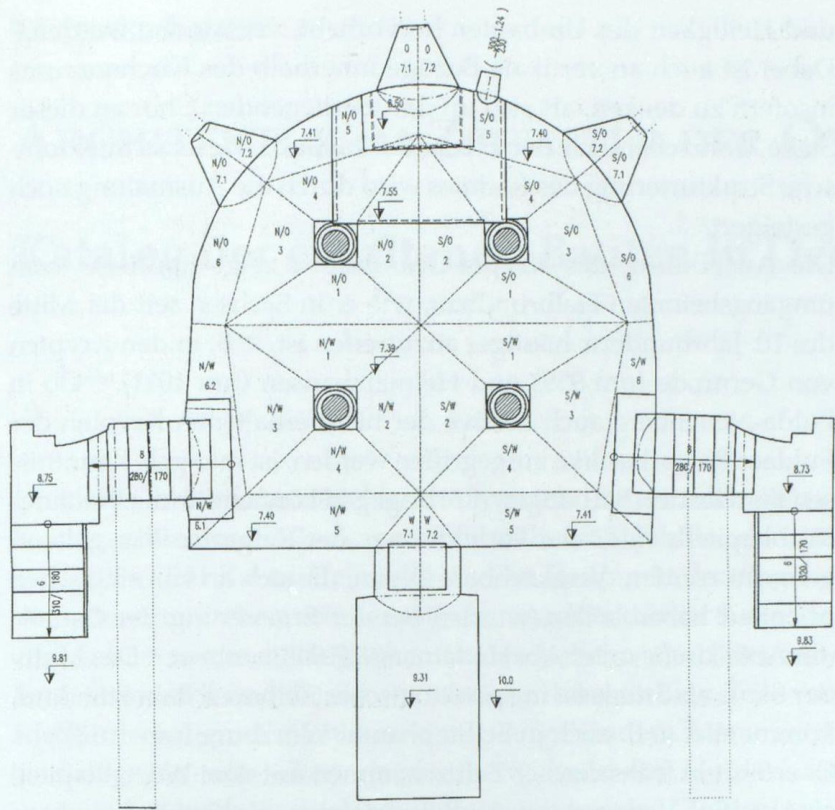
5 M.
15 FT.





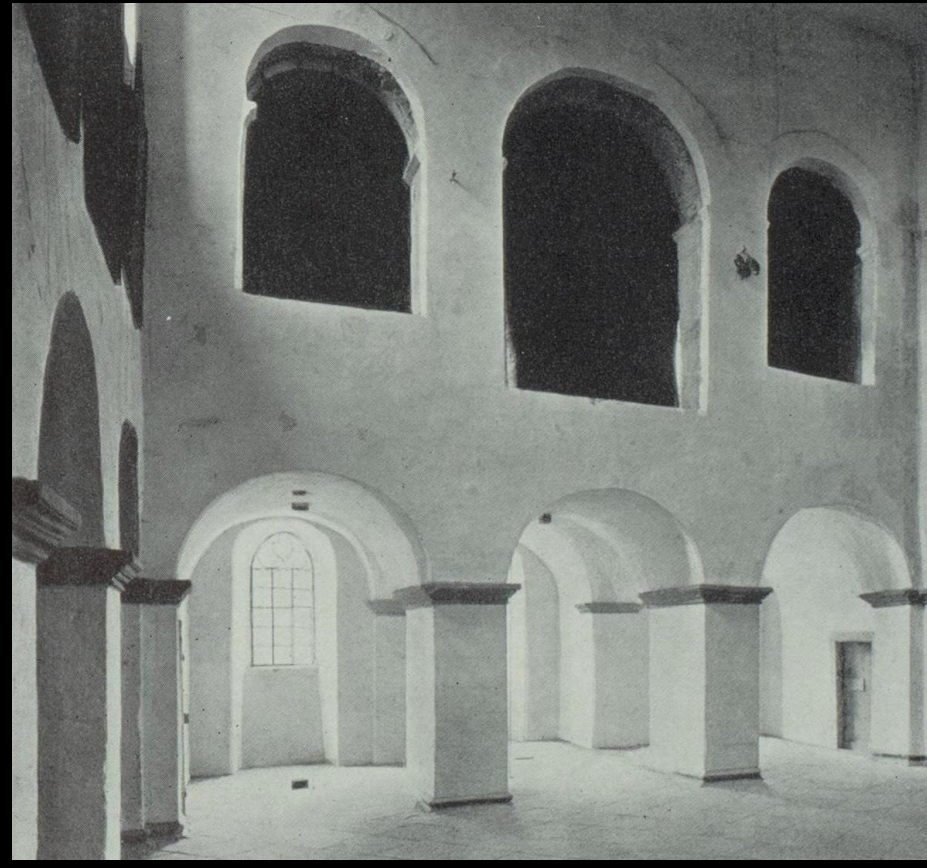
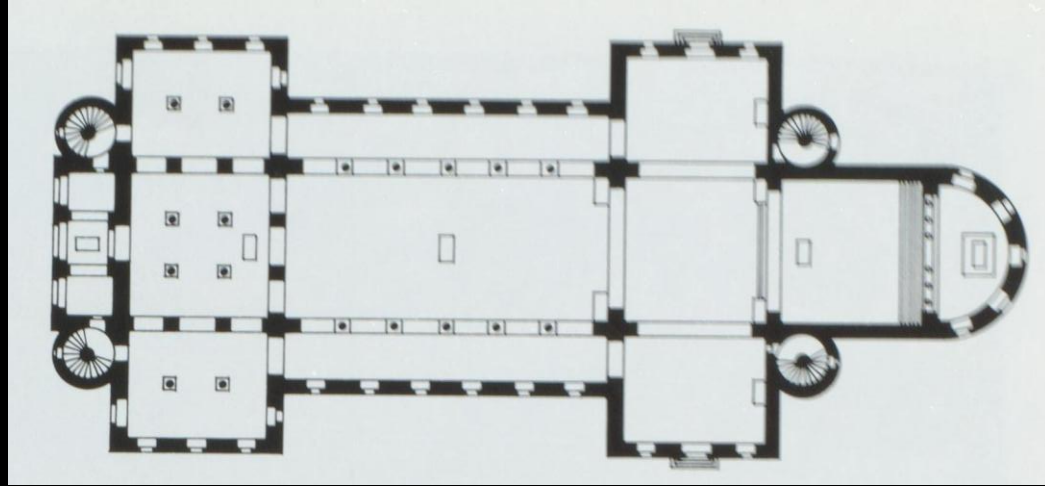


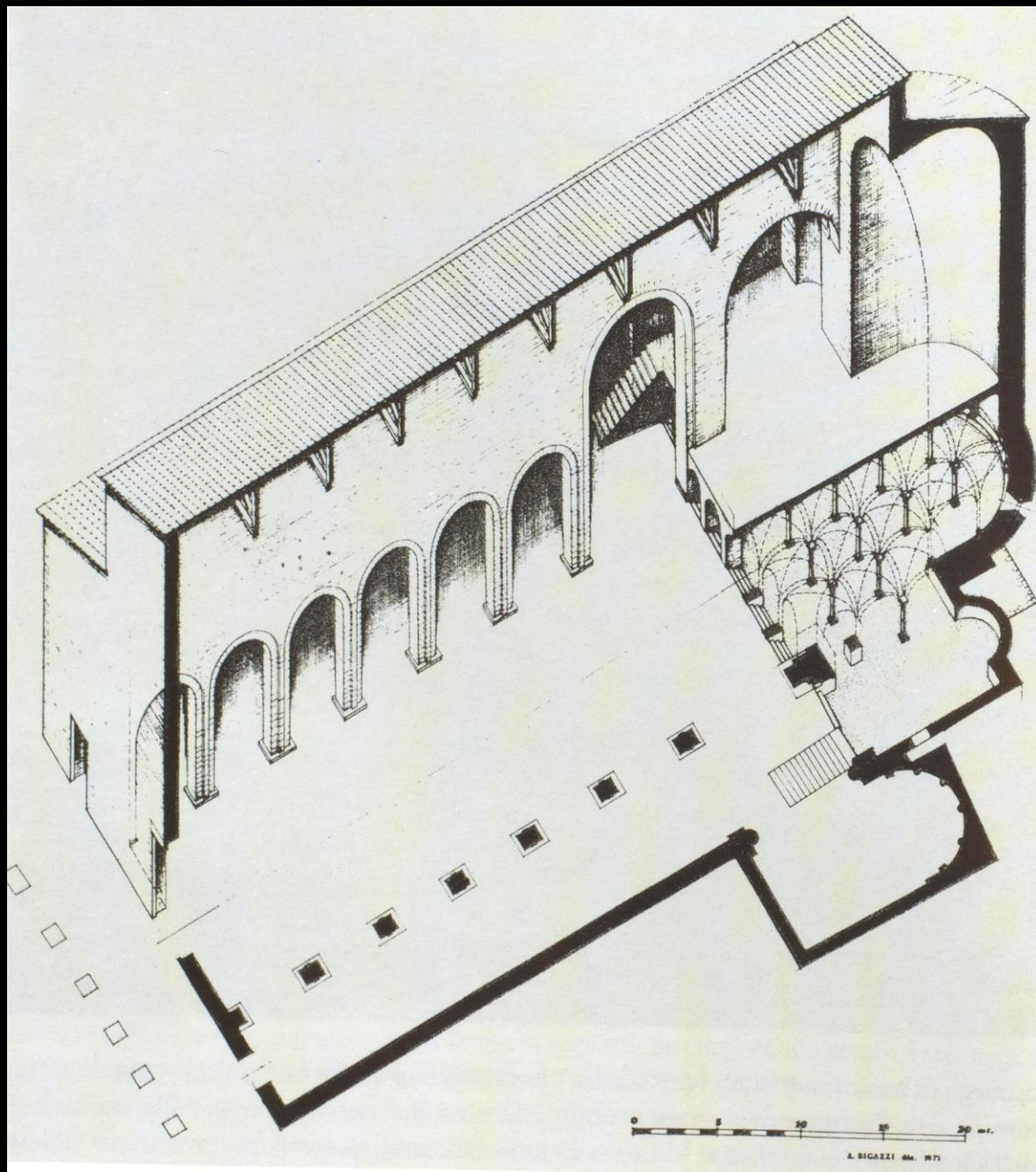
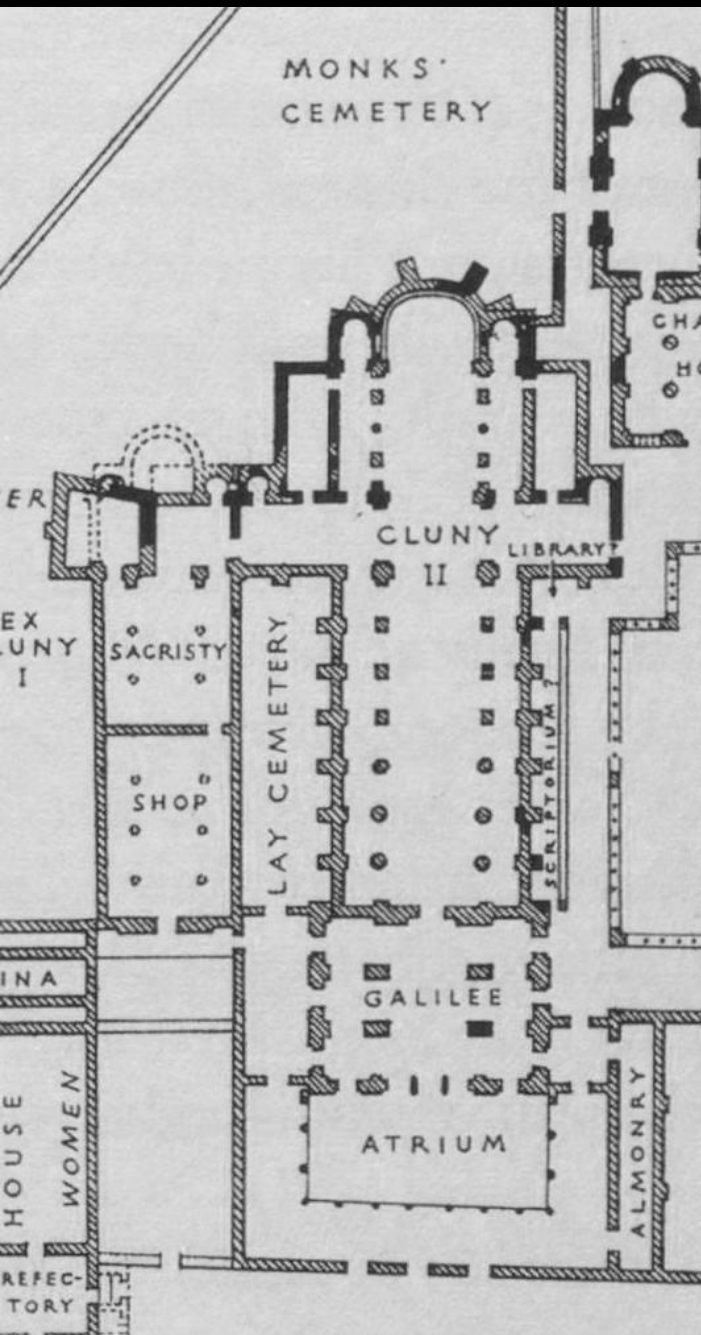


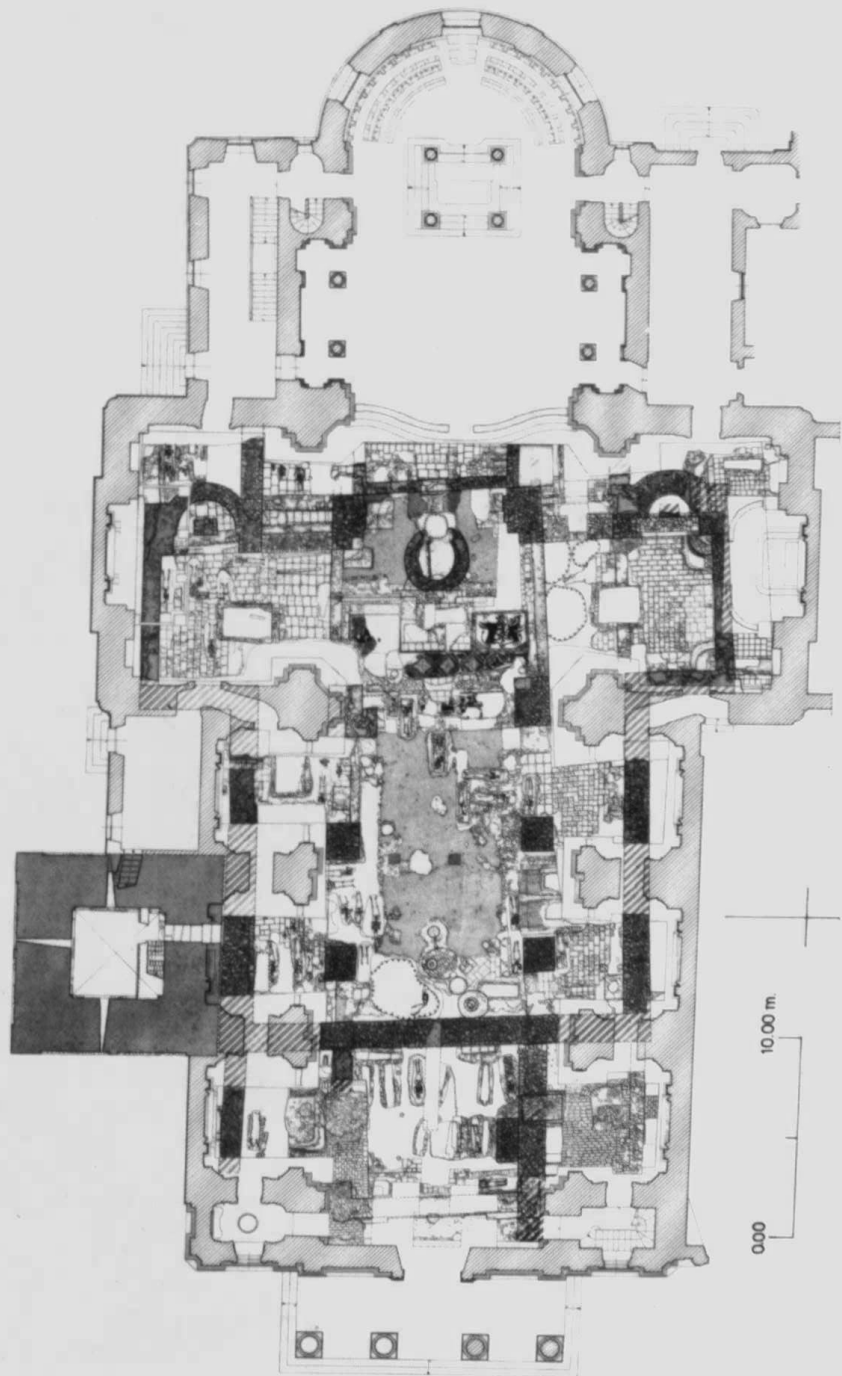


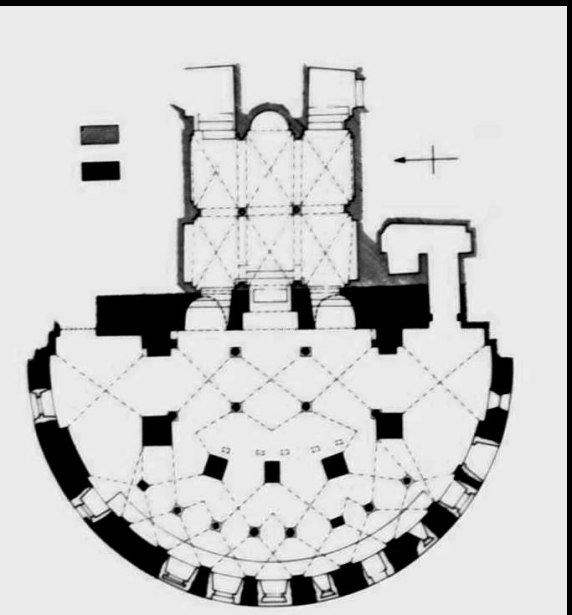


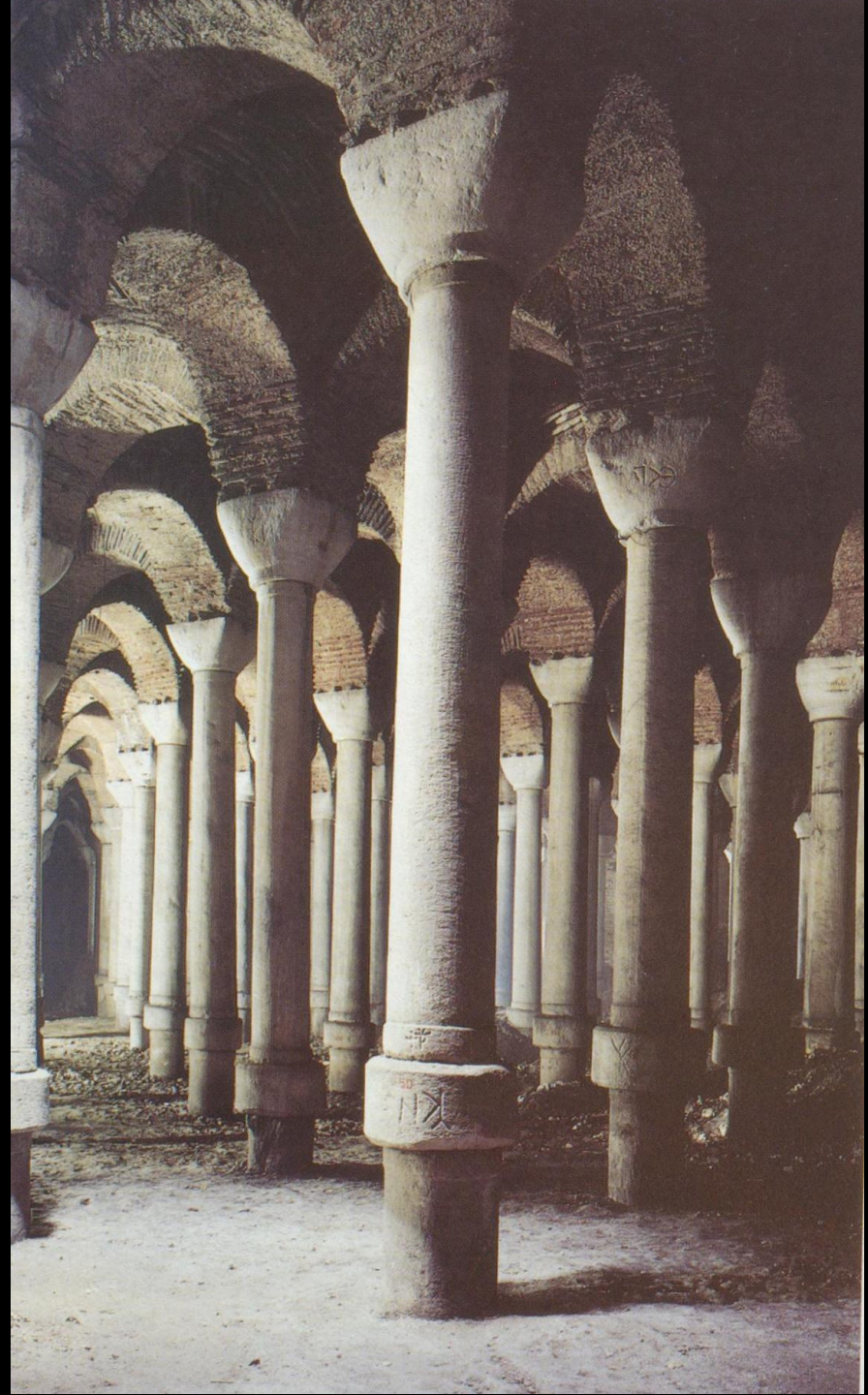




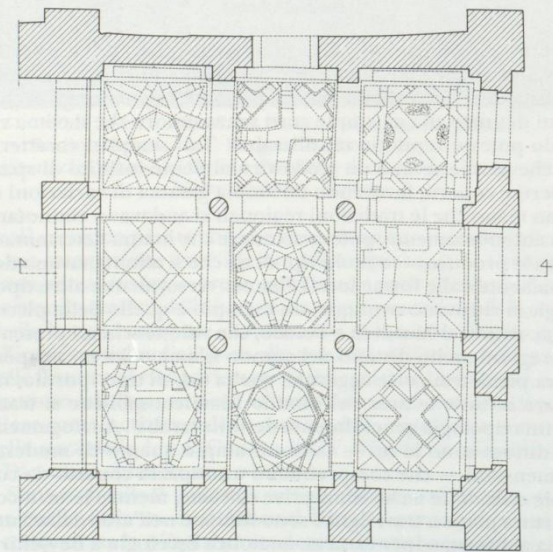
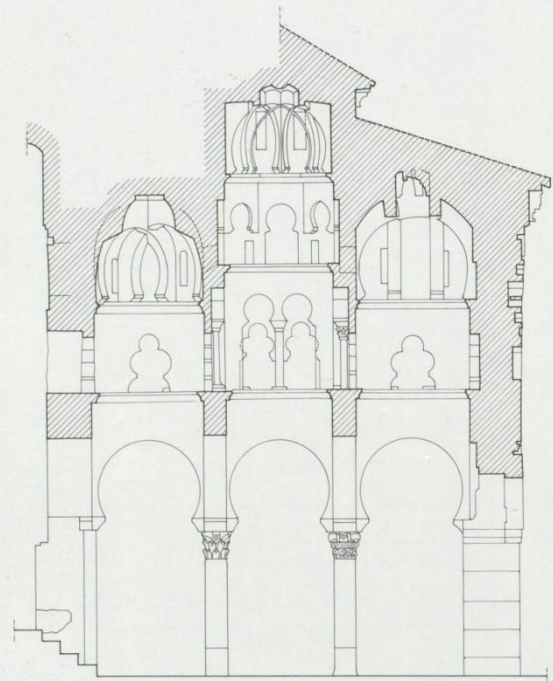












0 2 m

