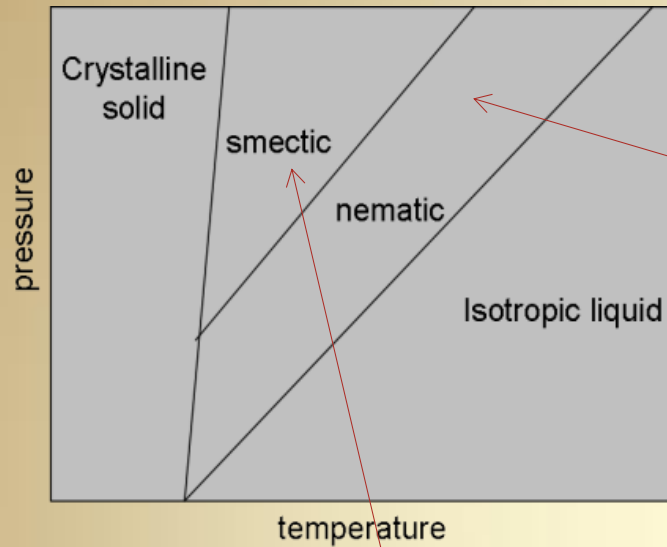
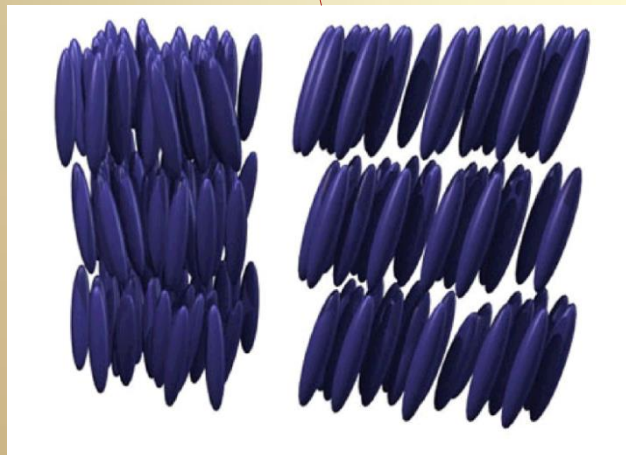


Cristalli liquidi

MesoFasi Termotropiche



Fasi Nematiche



Fasi Smetiche di tipo A e C



Fasi Chirali

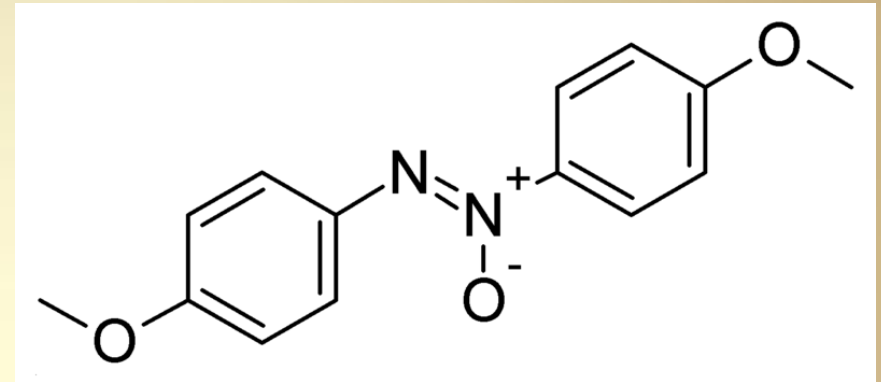
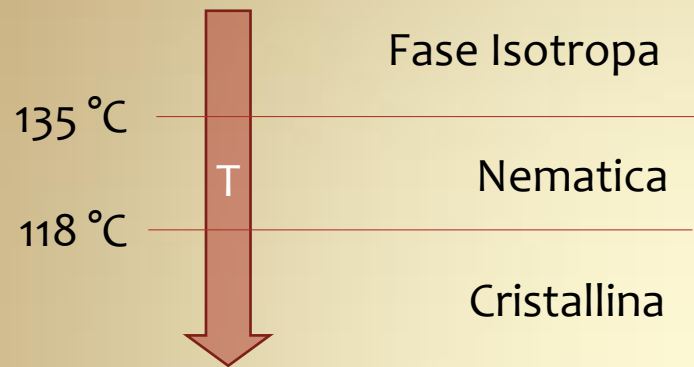


Fasi Colonnari

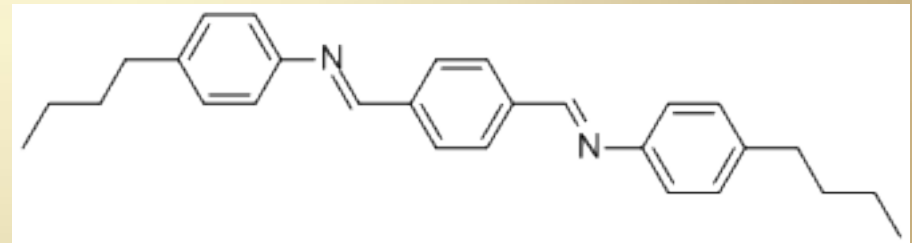
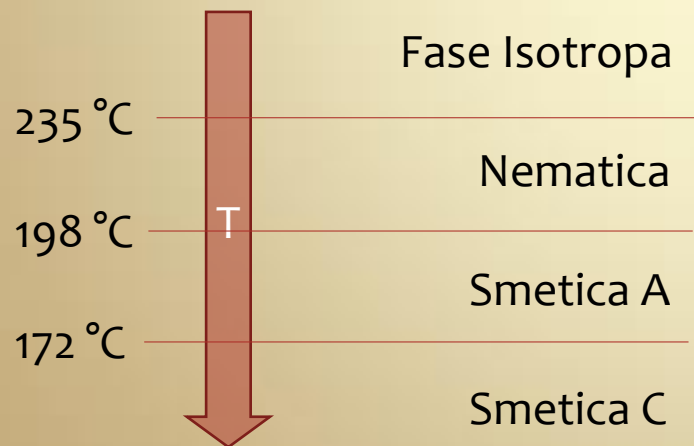
Cristalli liquidi

PAA, *para*-Azoxyanisole

Rod-like molecule

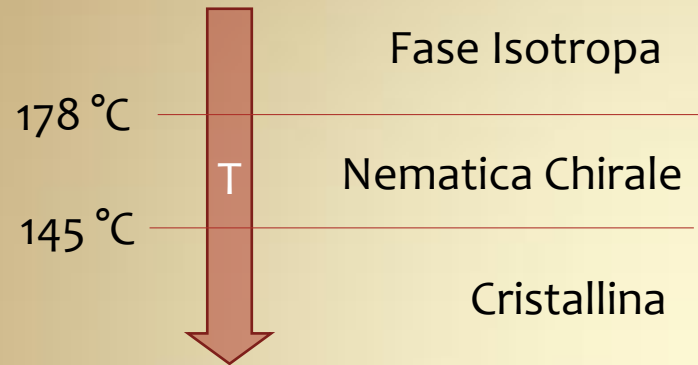


TBBA, Terephthalylidene-(*p*-butylaniline)

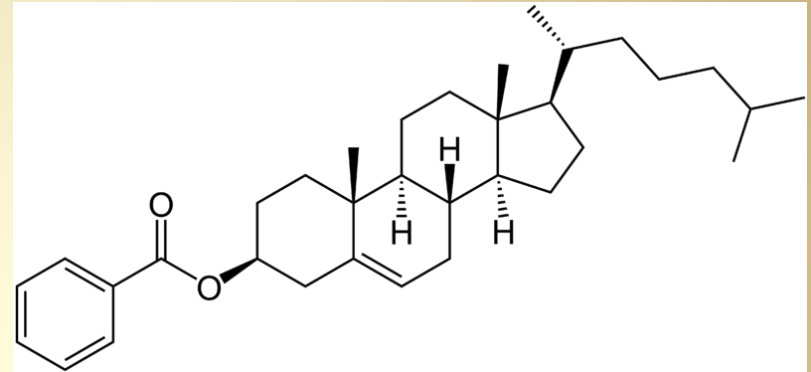


Cristalli liquidi

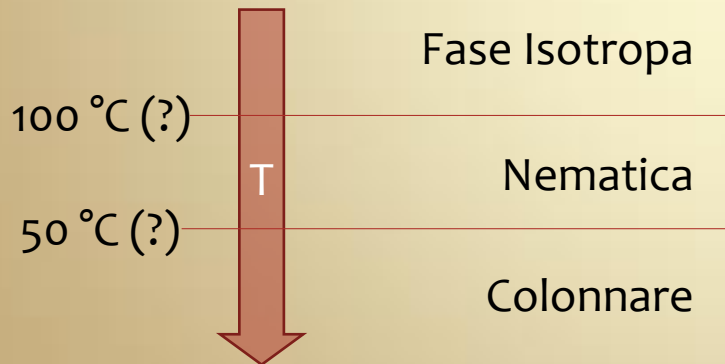
5-cholesten-3-yl benzoate



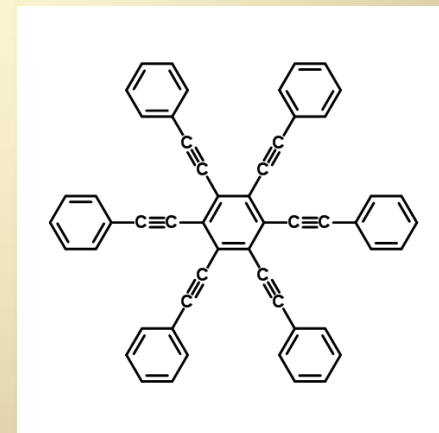
Chiral molecule



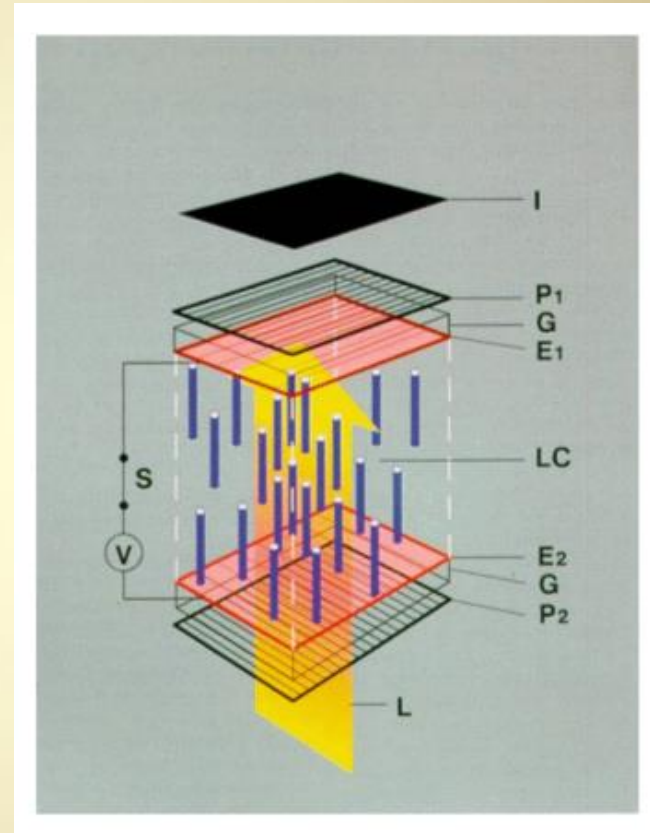
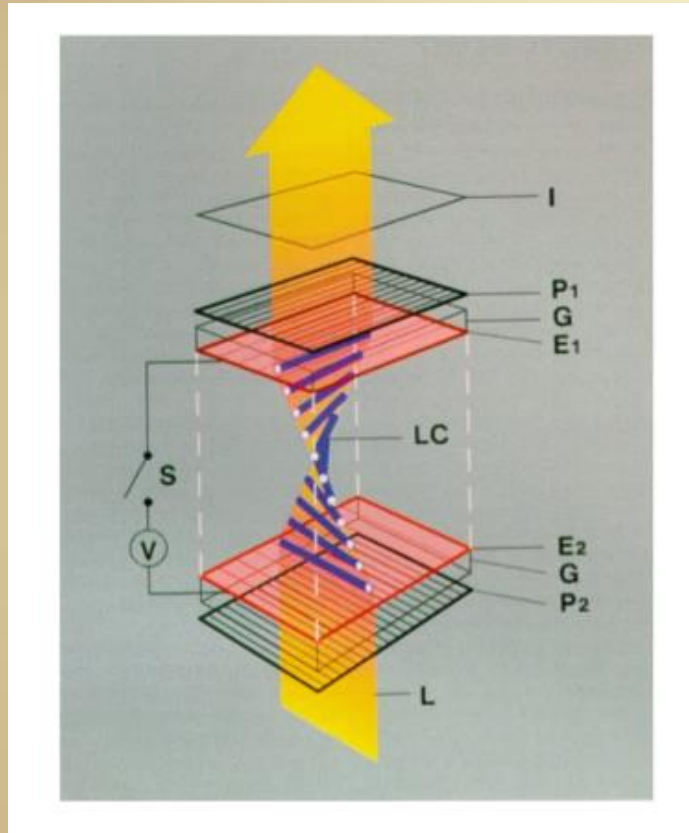
hexakis(phenylethynyl)benzene



Disc-like molecule



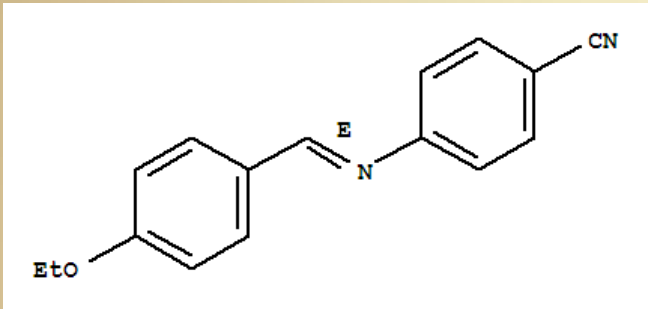
Twisted Nematic Technology



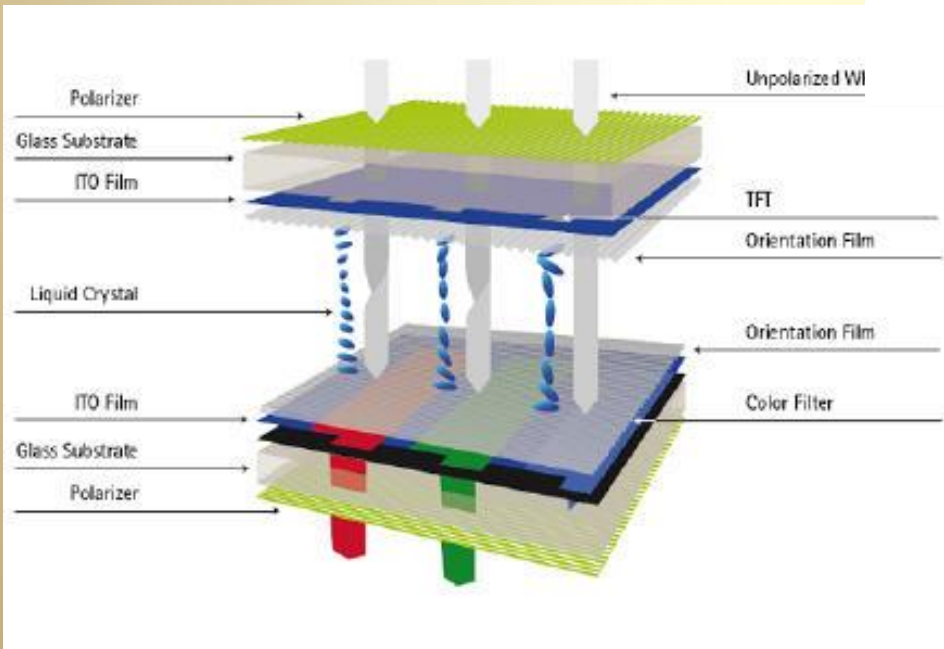
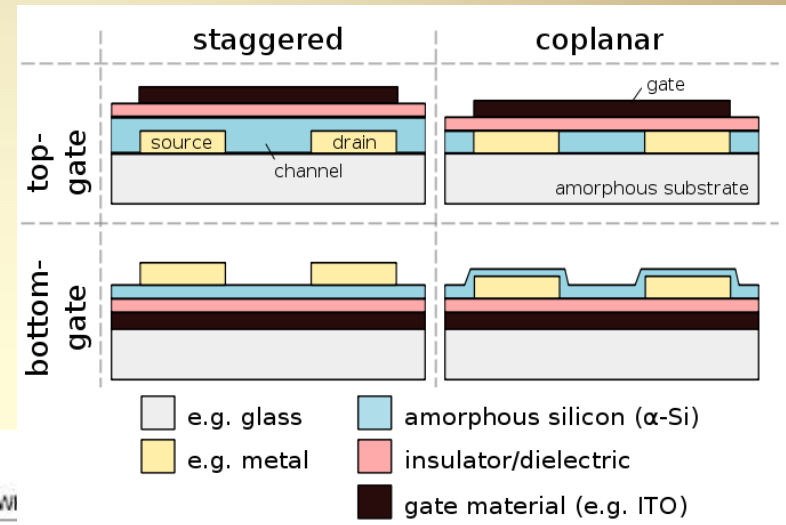
Based on Liquid Crystal

PEBAB

(p-ethoxybenzylidene-p'-aminobenzonitrile)

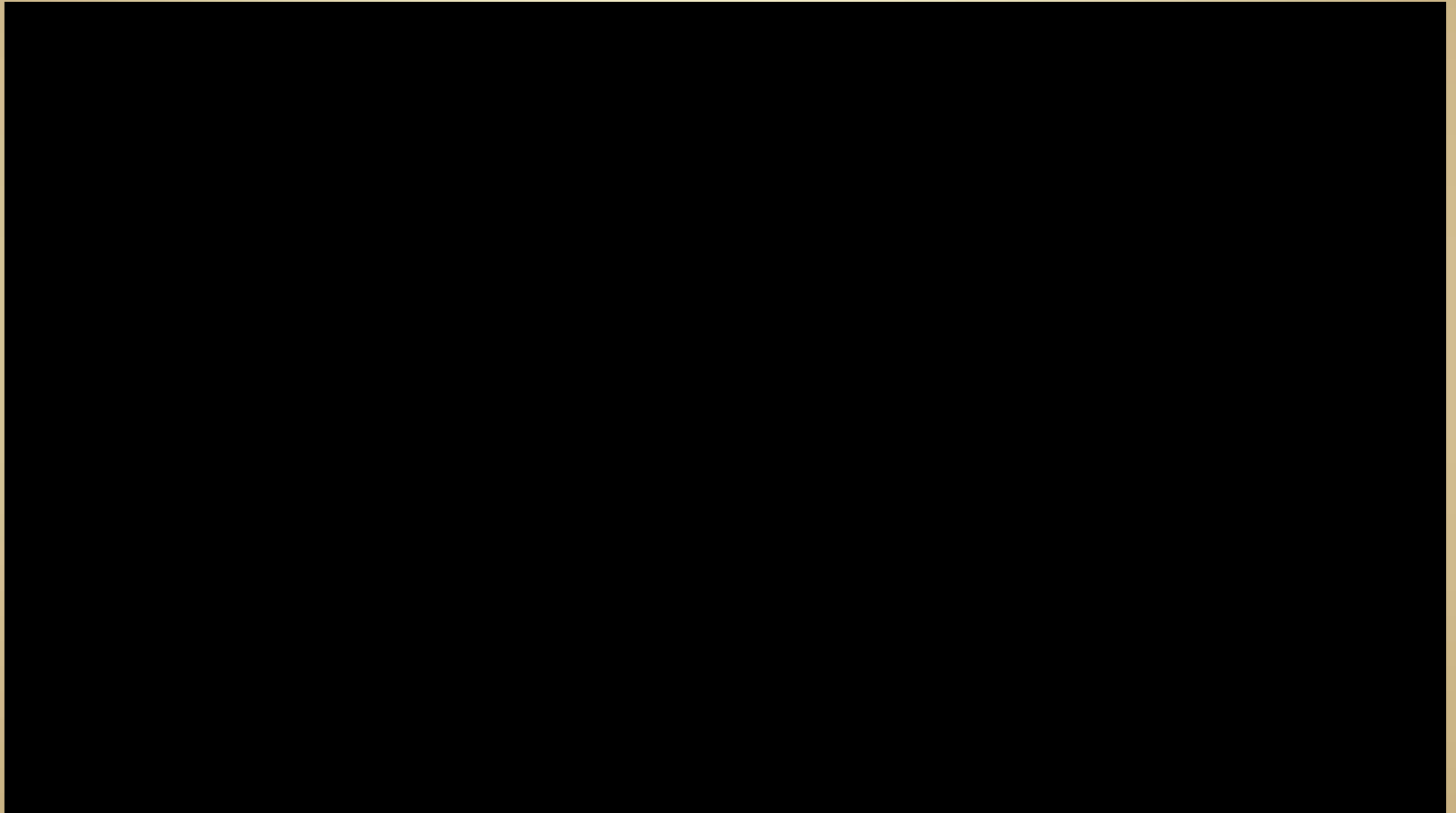


Thin Film Transistor (TFT) technology



Color LCD with TFT

Osservazione della transizione Isotropo-Nematica attraverso un Microscopio Polarizzatore



<https://www.youtube.com/watch?v=WJ3UGULPoBc>

Cristalli liquidi

MBBA

N-(4-Methoxybenzylidene)-4-butylaniline

