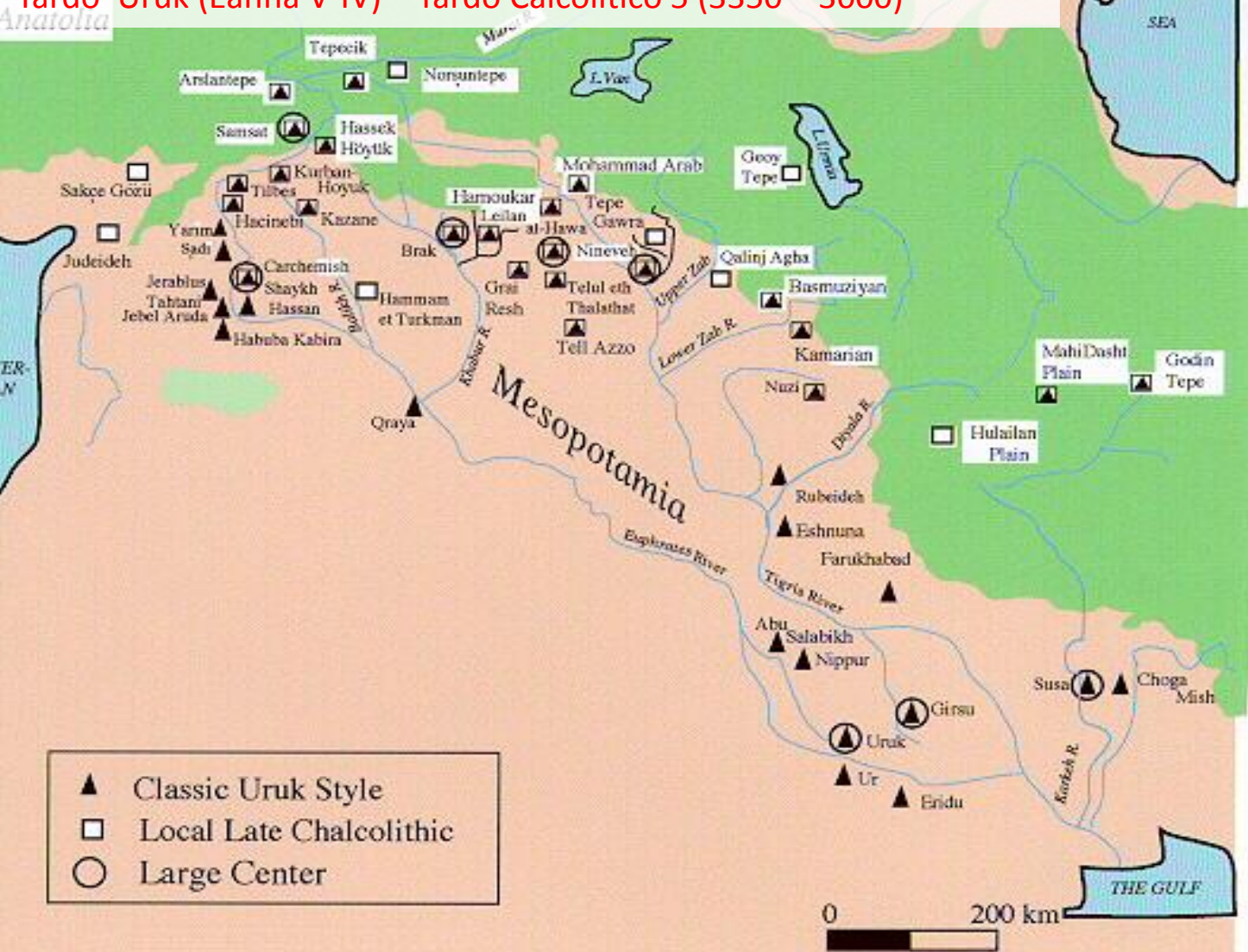


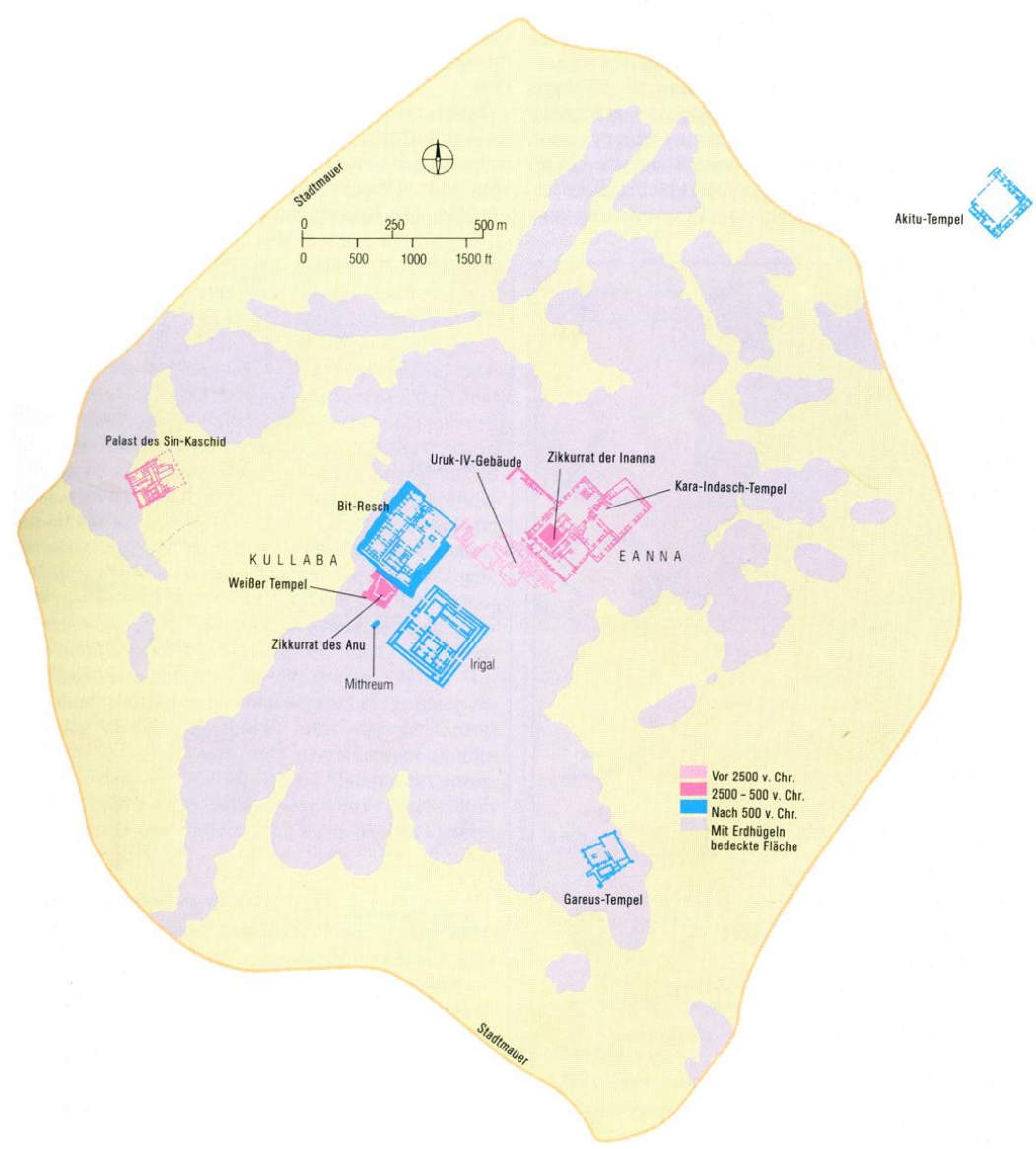
Il periodo protourbano e proto-elamita (I)

3500-2800 a.C.

Antico Uruk (Eanna XII- VIII)– Tardo Calcolitico 2 (4000 -3800)
 Medio Uruk (Eanna VII- VI) – Tardo Calcolitico 3-4 (3800-3350)
 Tardo Uruk (Eanna V-IV) – Tardo Calcolitico 5 (3350 – 3000)

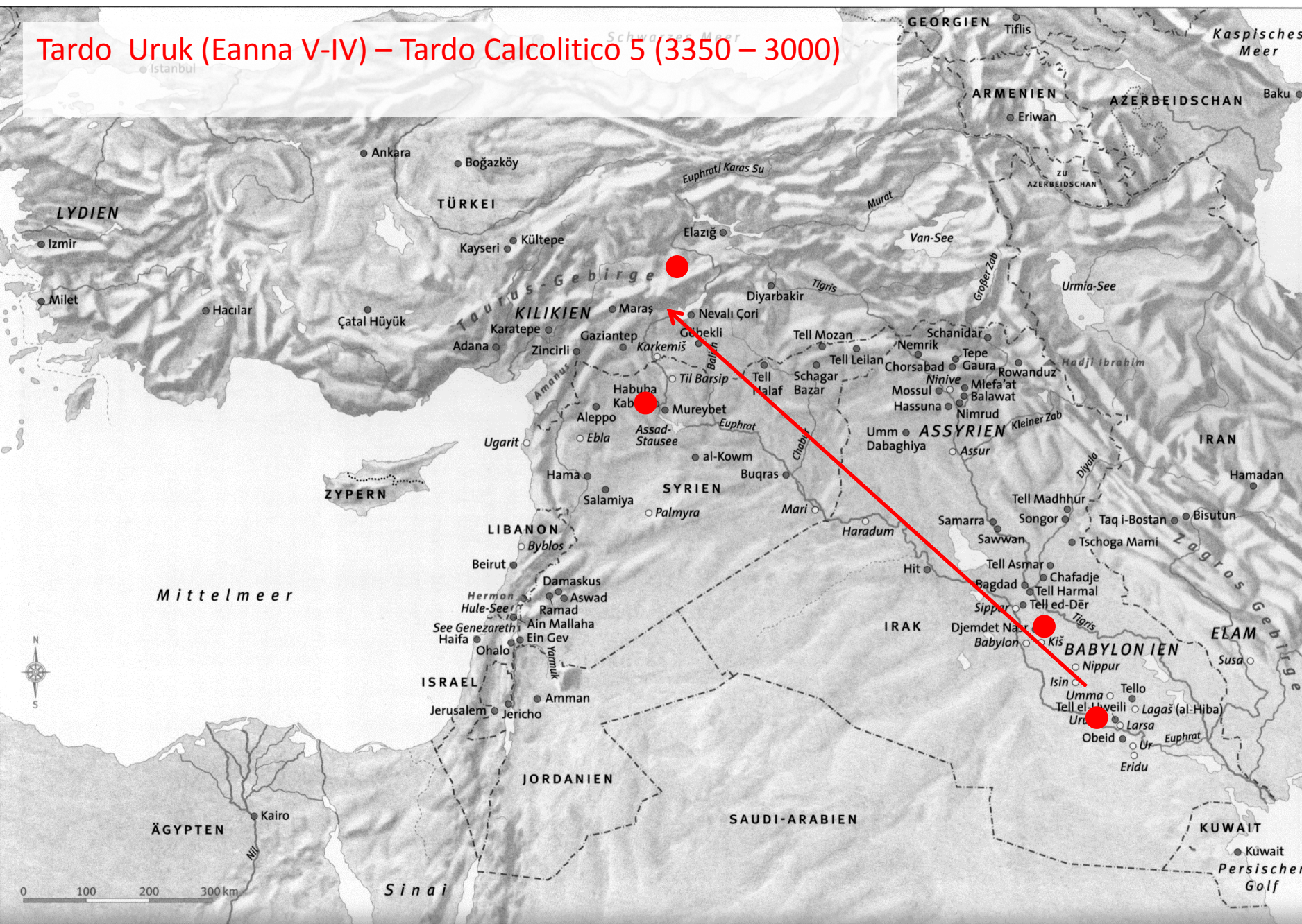


Fourth Millennium B.C.
 Mesopotamia



Dislivello Economico – diseuguaglianza Sociale
 Elite – controllo delle strutture politico religiose
 Insediamenti grandi, standardizzazione della ceramica,
 (stoccaggio/distribuzione pasti), Controllo sul lavoro

Tardo Uruk (Eanna V-IV) – Tardo Calcolitico 5 (3350 – 3000)



Algaze: sistema
mondo, rete
commerciale

Johnson: contrasti
interni, emigrazione
forzata

McCorriston:
allevamento
pecore/capre,
necessità di territori
non agricoli

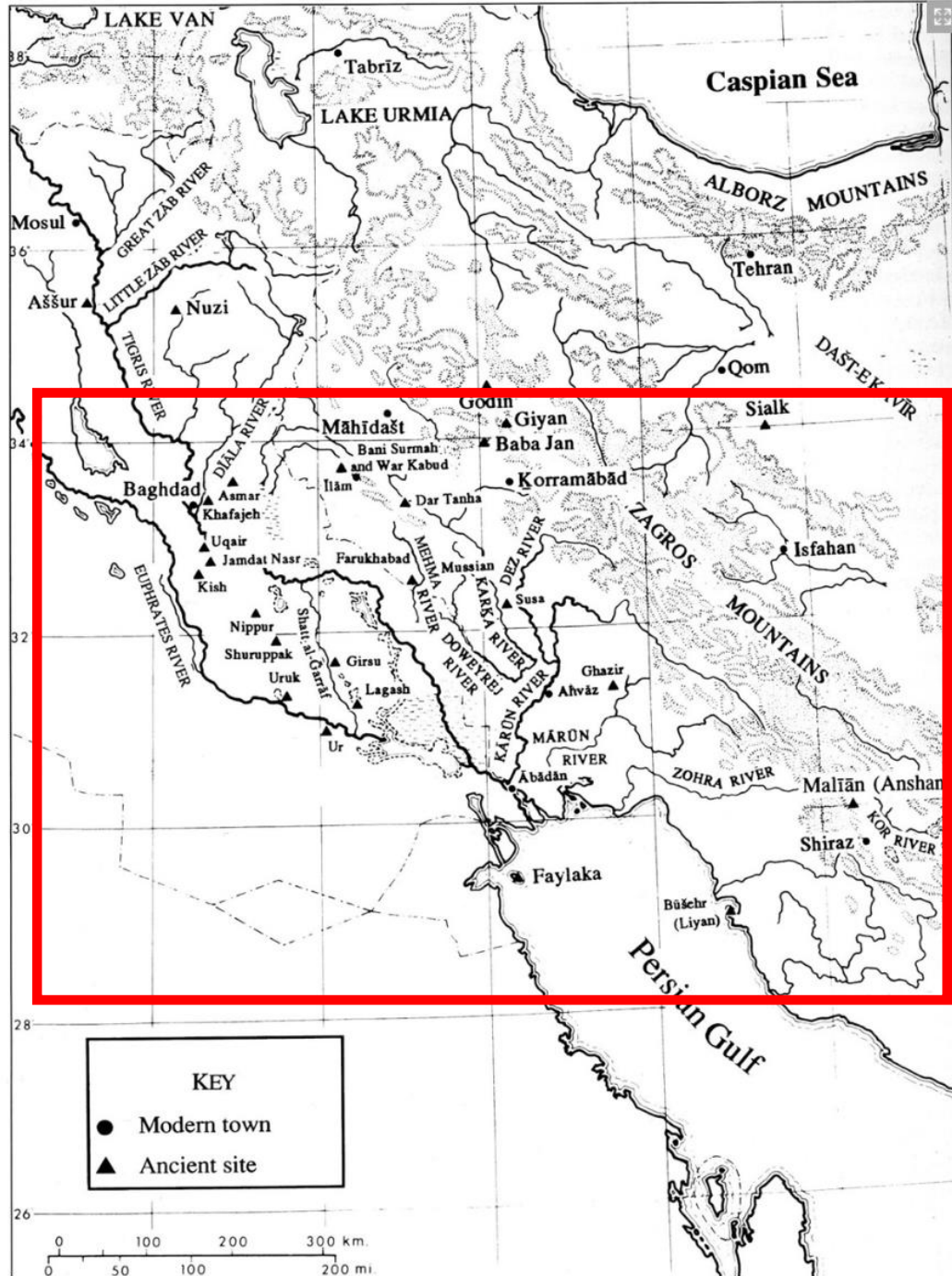
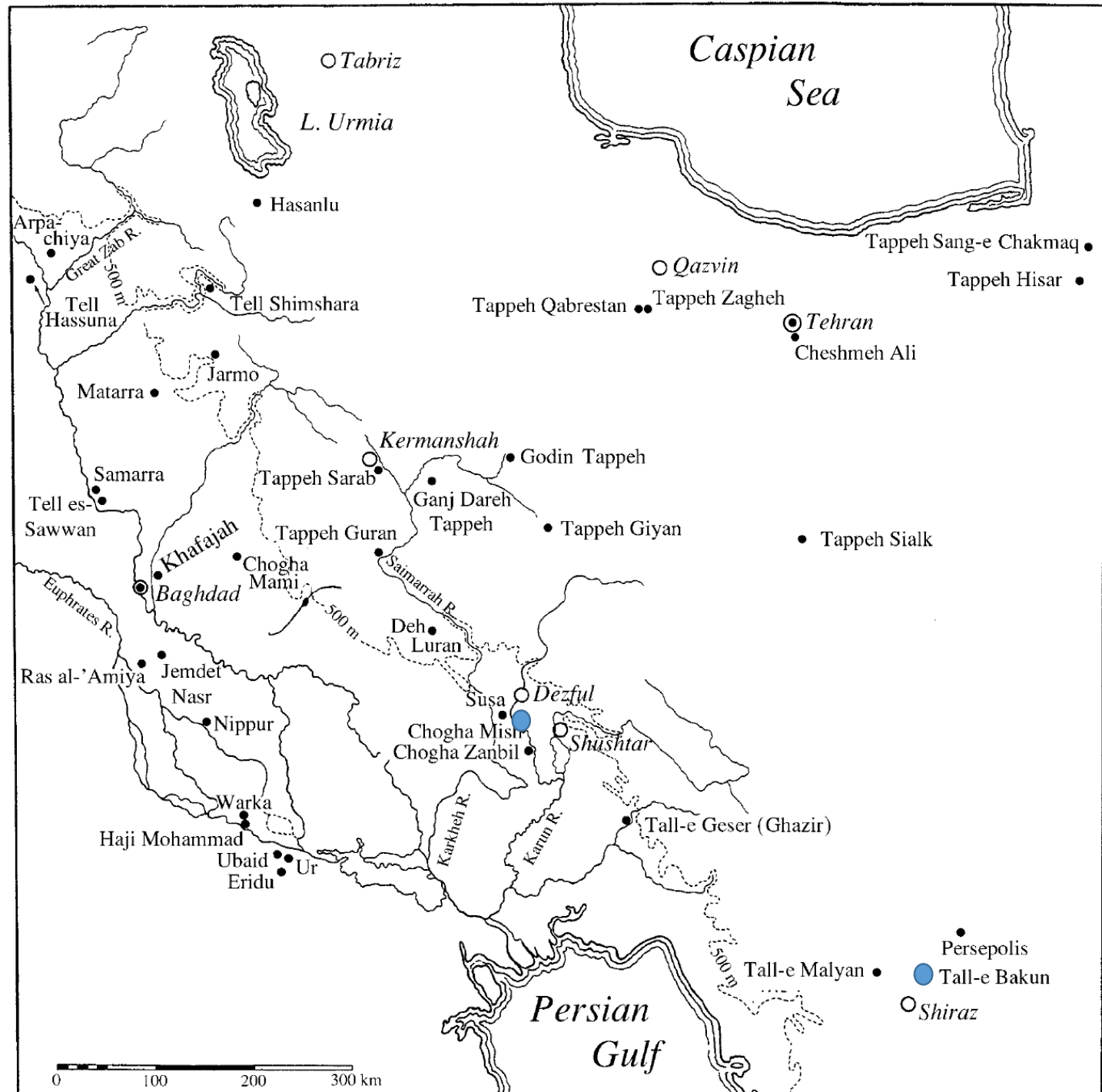


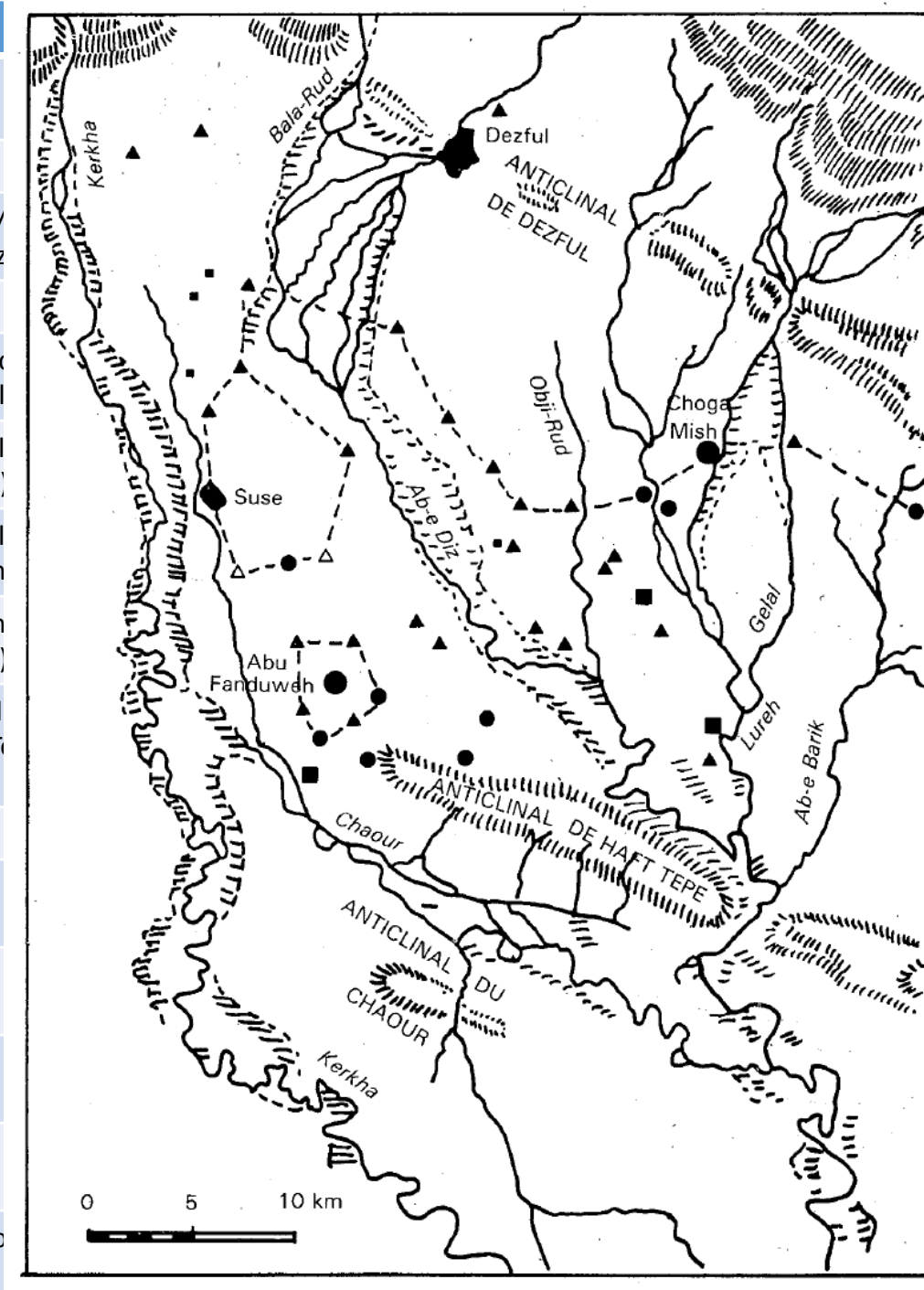
Figure 1. Major settlements in Elam and adjacent areas, ca 3000–2000 B.C.E.



Data (a.C.)	Lowland
5800-4800	Early and Middle Susiana, Choga Mish
4500-3800	Susa I, Choga Mish
3800-3100	Susa II
3100-2900	Susa III
2900-2350	Susa IIIc, Susa IVa
2330 tardo Protoelamita	Susa IVb
2100 Paleoelamita	Puzur Ishushinak
2000 Paleoelamita	Shimashki?
1900-1600 Paleoelamita	Sukkalmah Susa, ville royale, A lev. XV-XII
1500-1400, Medioelamita I	Haft Tepe, centro di Tepti Ahar
1400-1300 Medioelamita II	Chogha Zambil Susa
1300-1100 Medioelamita III	Chogha Zambil Susa (Shuthruk Nahunte)
1100-800 Neolamita I	Susa Ville Royale graves
743-646 Neolamita II	?
645-539, Neolamita III	



Data (a.C.)	Lowland	Highland
5800-4800	Early and Middle Susiana, Choga Mish	Tal-i Bakun B1, B2
4500-3800	Susa I	Tal-i-Bakun A III-IV
3800-3100	Susa II	Tal-i Bakun A (Lapui), Tal-i M Konar Sandal north? Terrazz
3100-2900	Susa III	Tal-i Malyan late Banesh
2900-2350	Susa IIIc, Susa IVa	Godin Tepe III, Abbandono c Konar Sandal South (Citadel
2330 tardo Protoelamita	Susa IVb	Konar Sandal South (Citadel Tepe Hissar IIIB (2400-2170)
2100 Paleoelamita	Puzur Ishushinak	Konar Sandal South (Citadel Tal-i Malyan early Kaftari ph
2000 Paleoelamita	Shimashki?	Tal-i Malyan early Kaftari ph Tepe Hissar IIIC (2170-1900)
1900-1600 Paleoelamita	Sukkalmah Susa, ville royale, A lev. XV-XII	Tal-i Malyan early and midd Kuragun, Naqsh-i Rustom, T Chogha Mish old elamite
1500-1400, Medioelamita I	Haft Tepe, centro di Tepti Ahar	Hasanlu V (1450-1250)
1400-1300 Medioelamita II	Chogha Zambil Susa	Tal-i Malyan Hasanlu V (1450-1250)
1300-1100 Medioelamita III	Chogha Zambil Susa (Shuthruk Nahunte)	Tal-i Malyan Hasanlu V (1450-1250), IVc
1100-800 Neoelamita I	Susa Ville Royale graves	Hasanlu IVb (1050-800) Hasanlu Iva (effimero)
743-646 Neoelamita II	?	Hasanlu IIIc-b (800-550) Godin Tepe II
645-539, Neoelamita III		Hasanlu IIIc-b (800-550), Go



● ○ Grand centre

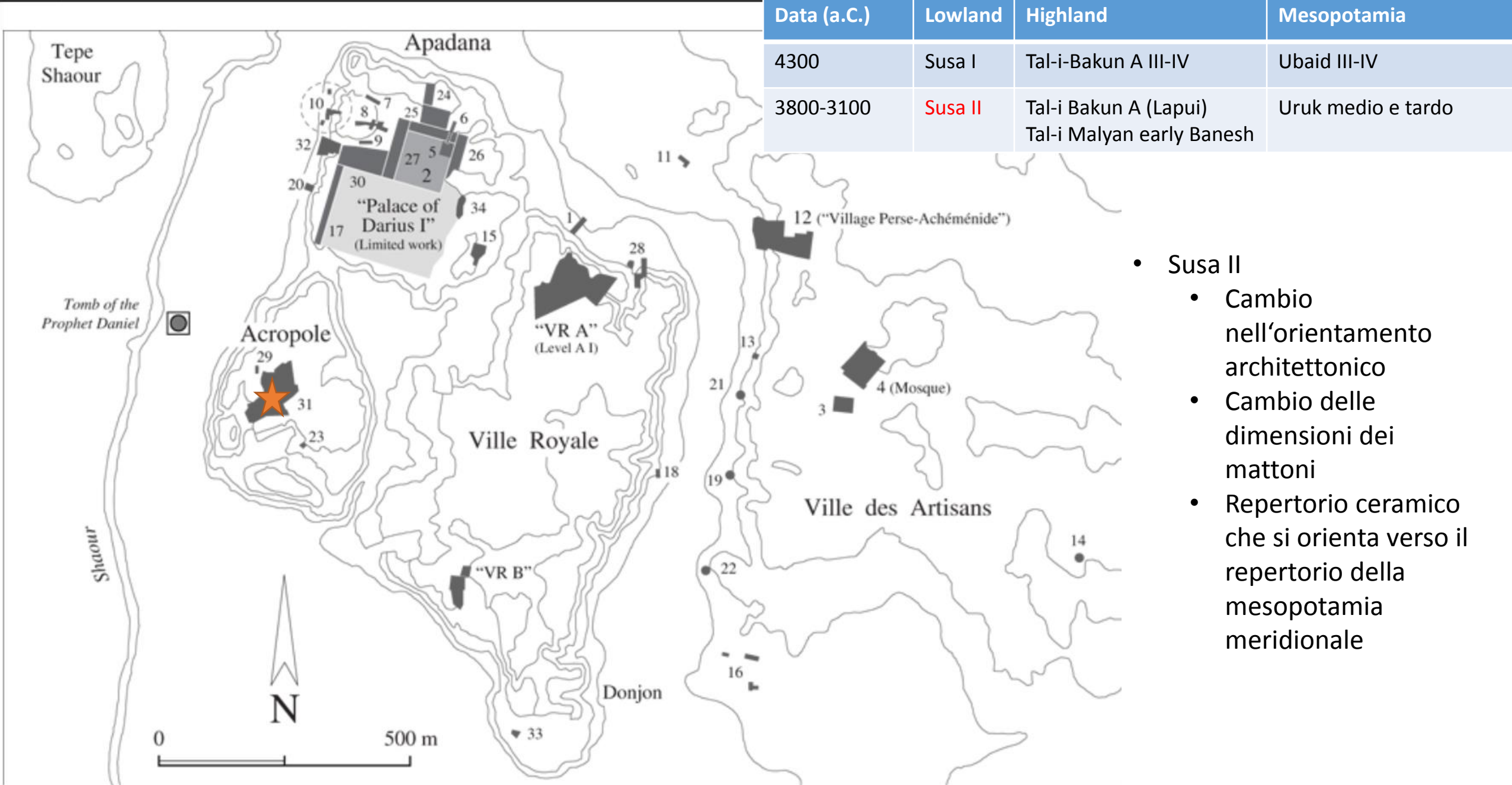


FIGURE 1. The main sites (indicated by numerals) worked at Susa by Roman Ghirshman and Marie-Joseph Steve, 1946-68.

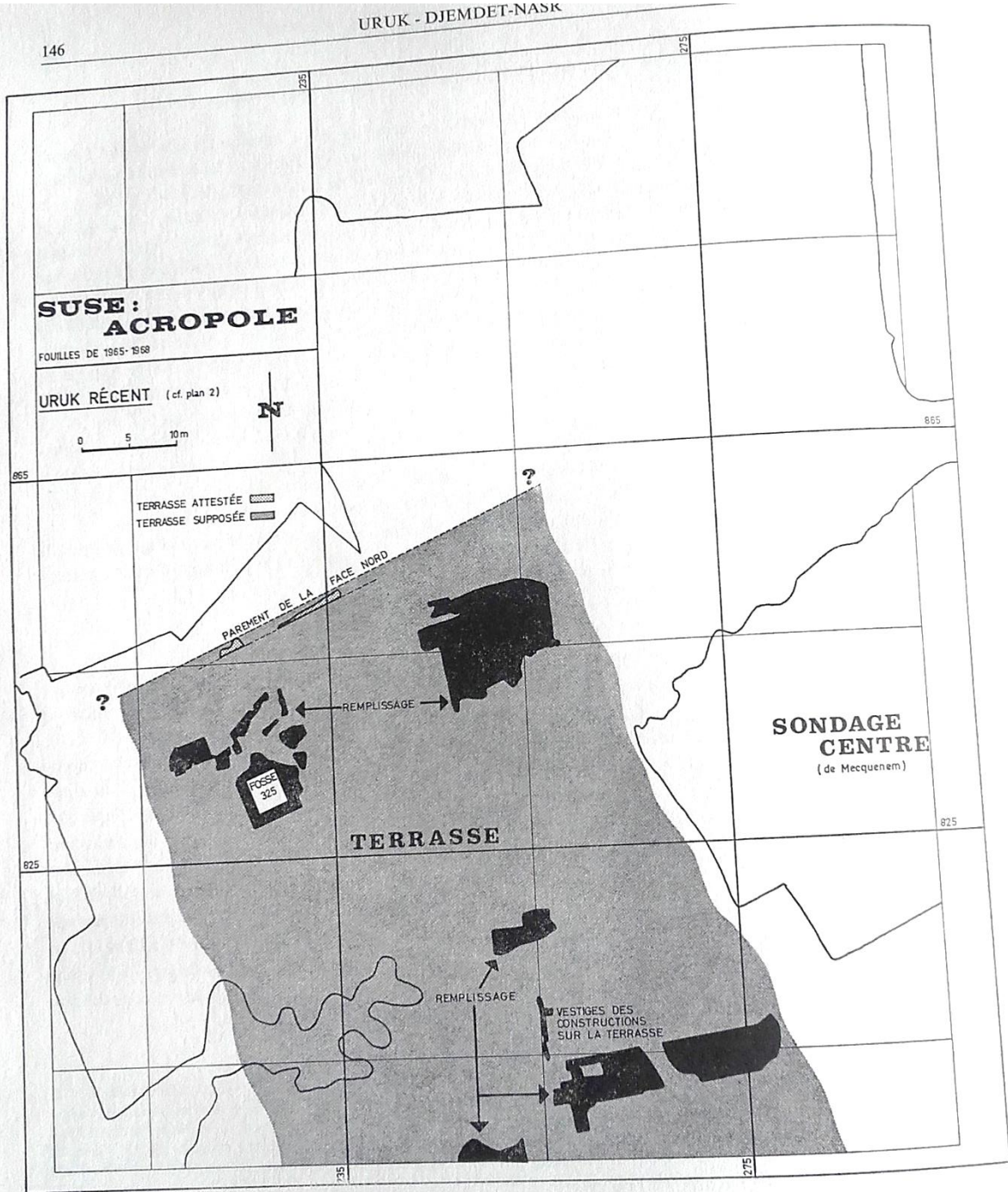


Fig. 12

Data (a.C.)	Lowland	Highland	Mesopotamia
4300	Susa I	Tal-i-Bakun A III-IV	Ubaid III-IV
3800-3100	Susa II	Tal-i Bakun A (Lapui) Tal-i Malyan early Banesh	Uruk medio e tardo

· Terrazza 45x60

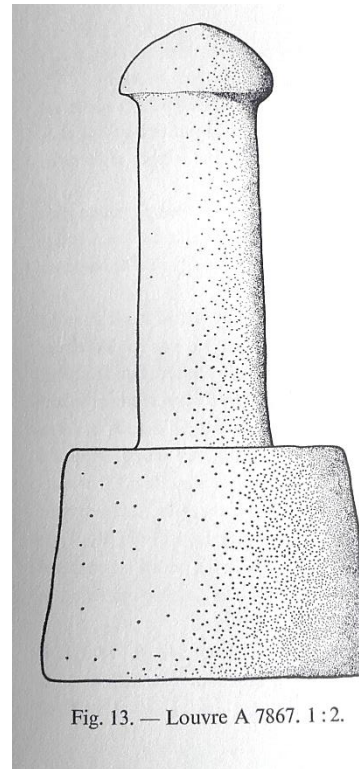
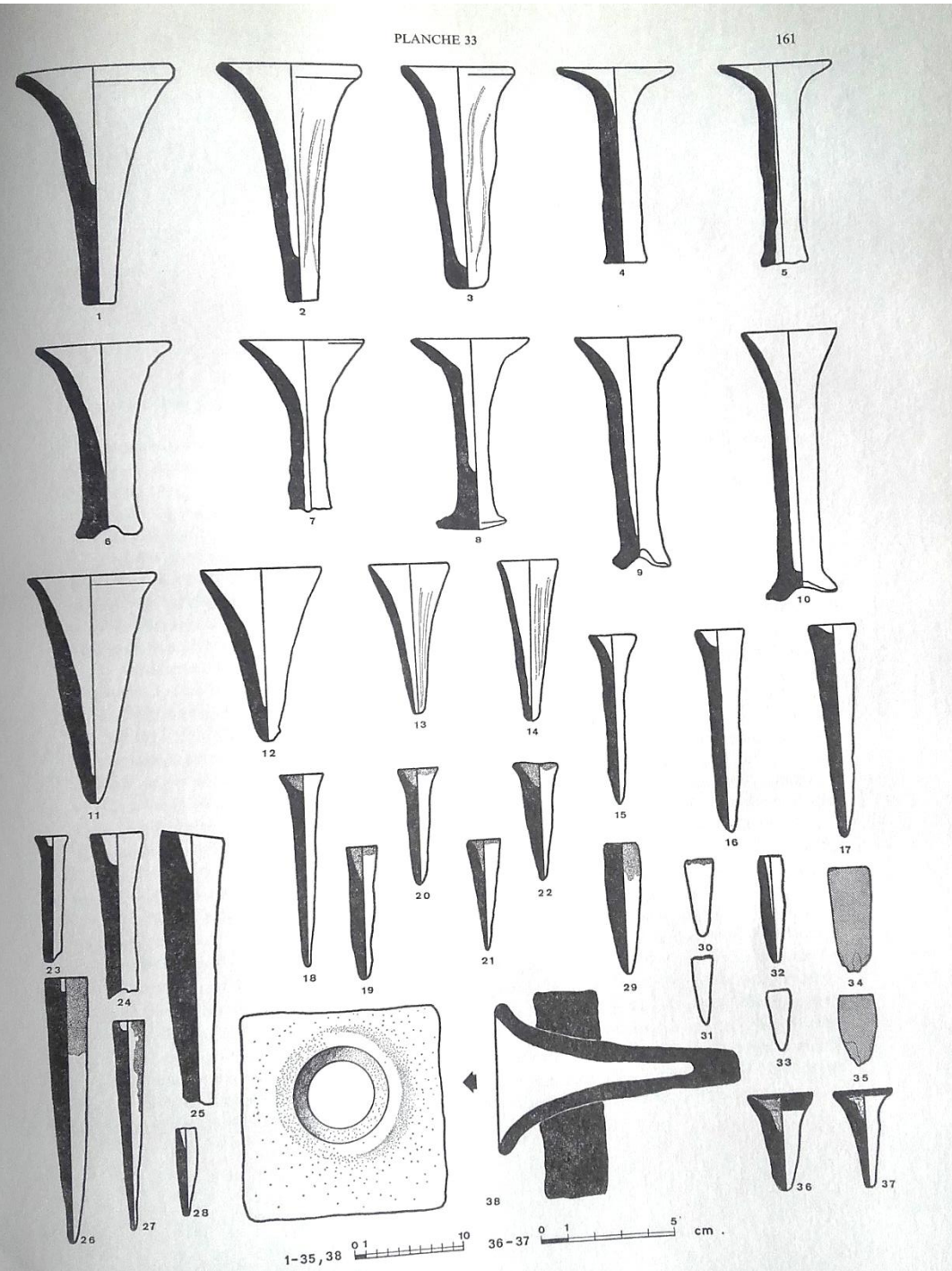
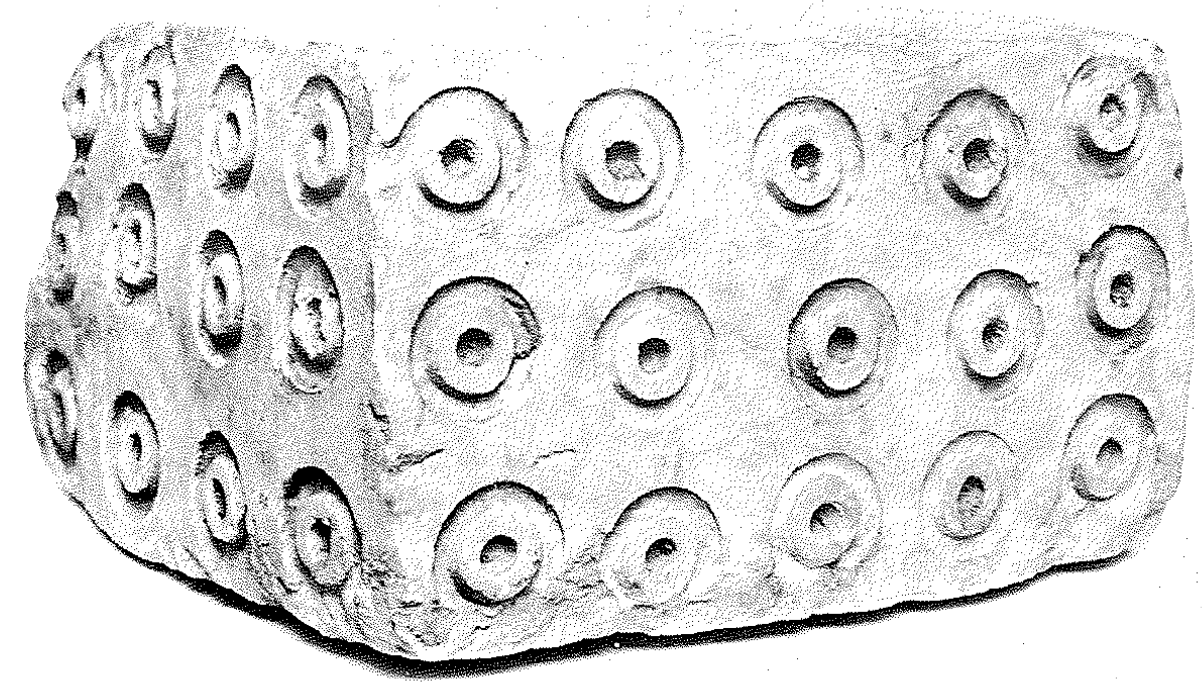


Fig. 13. — Louvre A 7867. 1 : 2.



Data (a.C.)	Lowland	Highland	Mesopotamia
4300	Susa I	Tal-i-Bakun A III-IV	Ubaid III-IV
3800-3100	Susa II	Tal-i Bakun A (Lapui) Tal-i Malyan early Banesh	Uruk medio e tardo

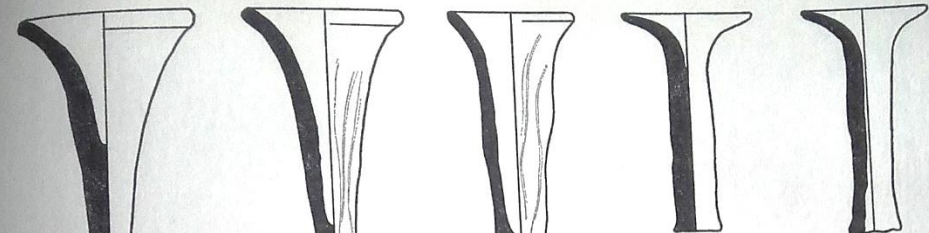
coni decorativi sulle pareti esterne



12. Suse, période II. Bloc de calcaire à décor imitant une mosaïque de cônes Voir p. 55.

PLANCHE 33

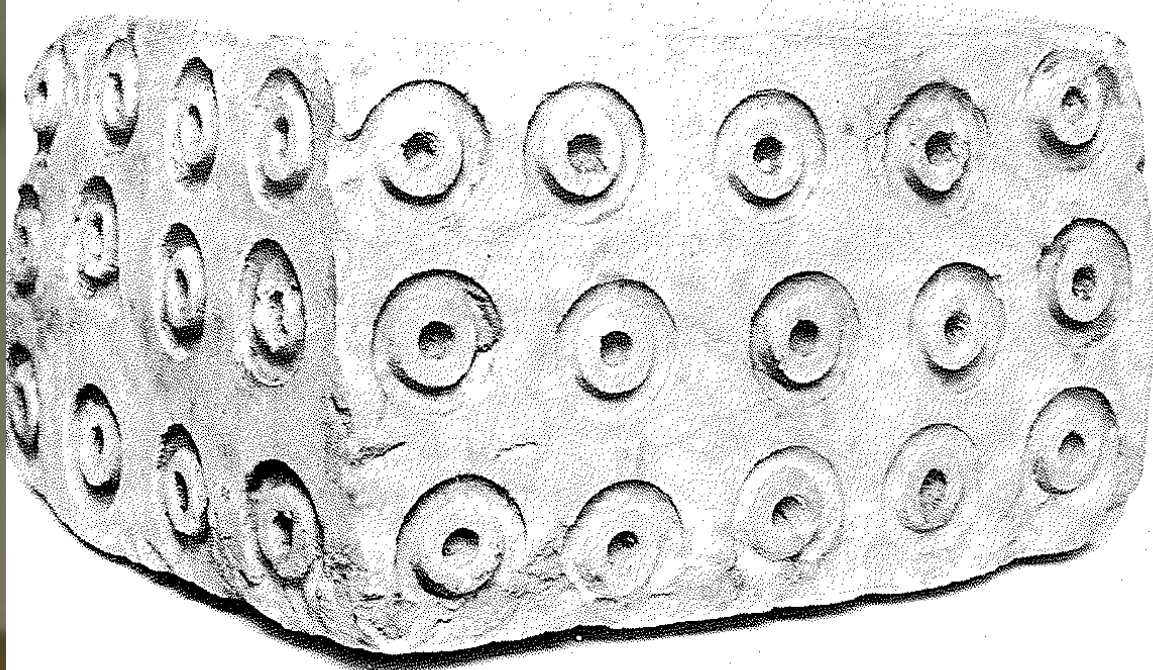
161



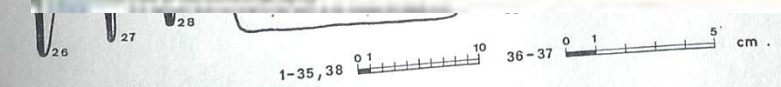
Data (a.C.)	Lowland	Highland	Mesopotamia
4300	Susa I	Tal-i-Bakun A III-IV	Ubaid III-IV
3800-3100	Susa II	Tal-i Bakun A (Lapui) Tal-i Malyan early Banesh	Uruk medio e tardo



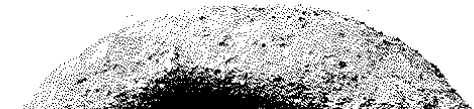
coni decorativi sulle pareti esterne

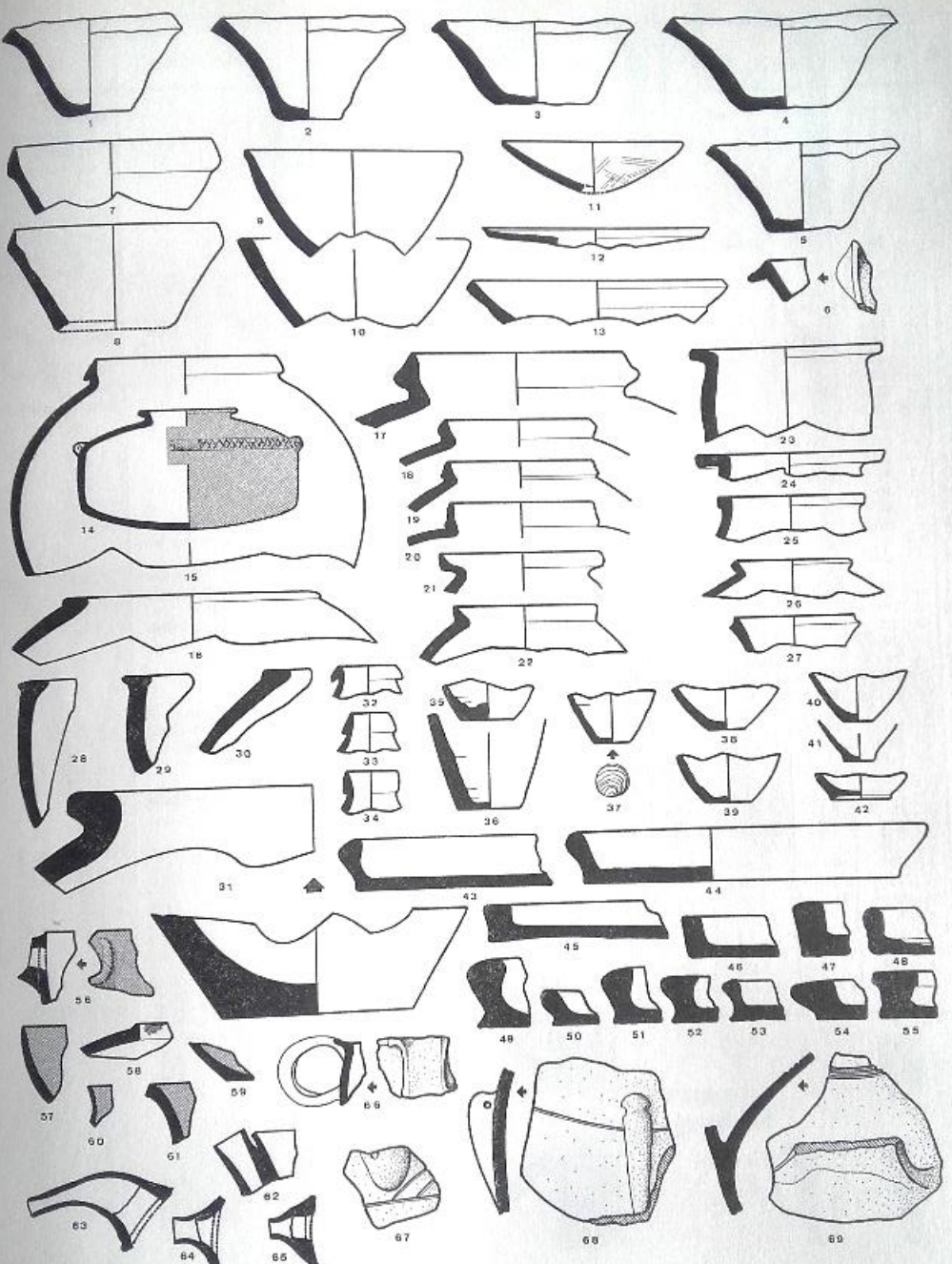


Uruk

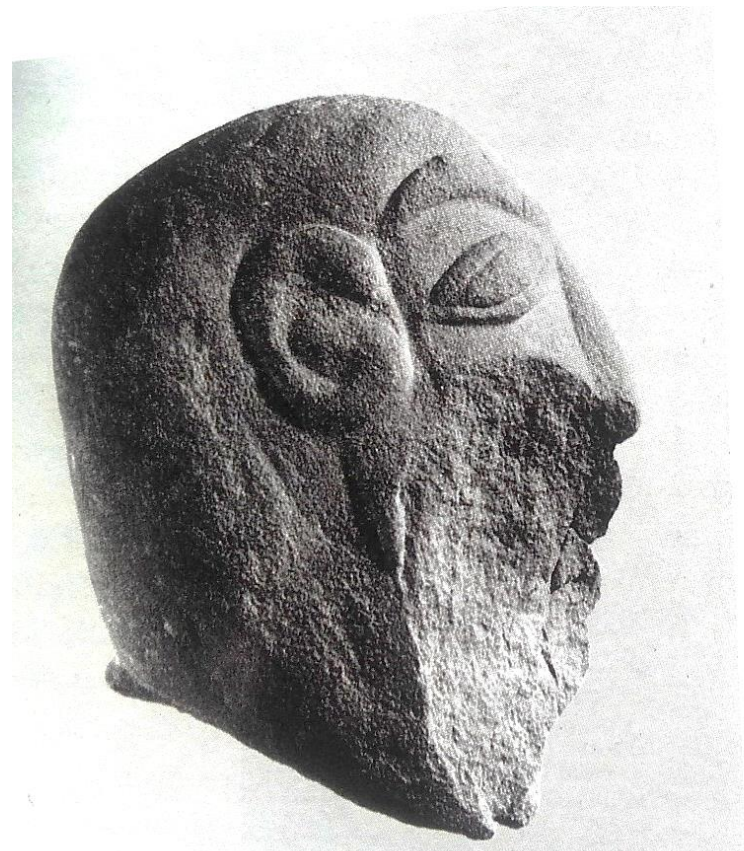


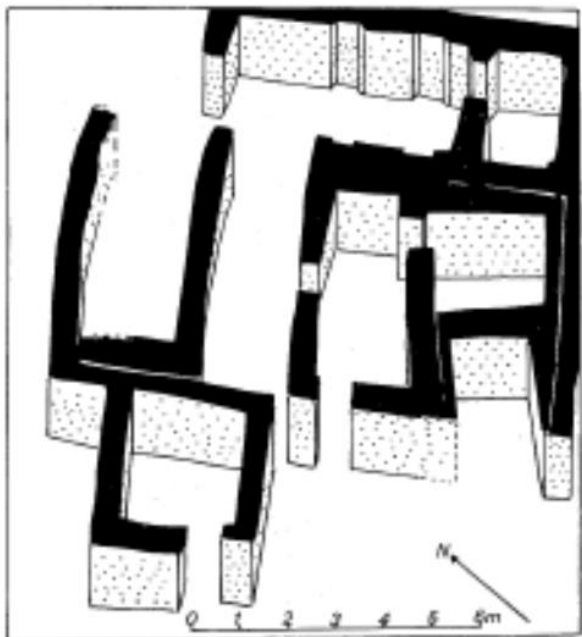
12. Suse, période II. Bloc de calcaire à décor imitant une mosaïque de cônes Voir p. 55.



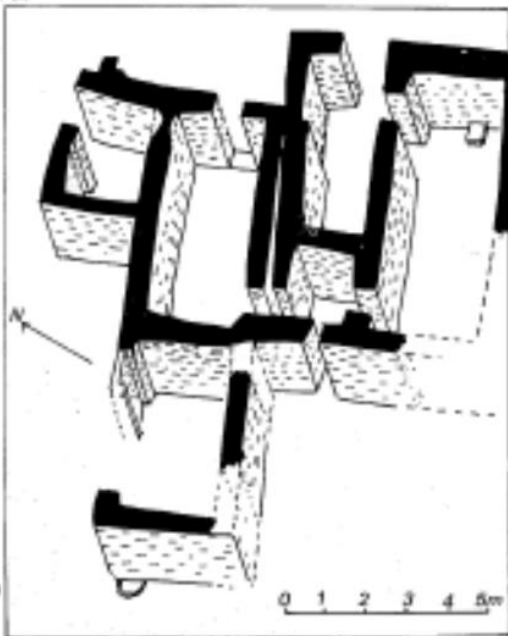


1-65 0 1 10 66-69 0 1 5 cm.





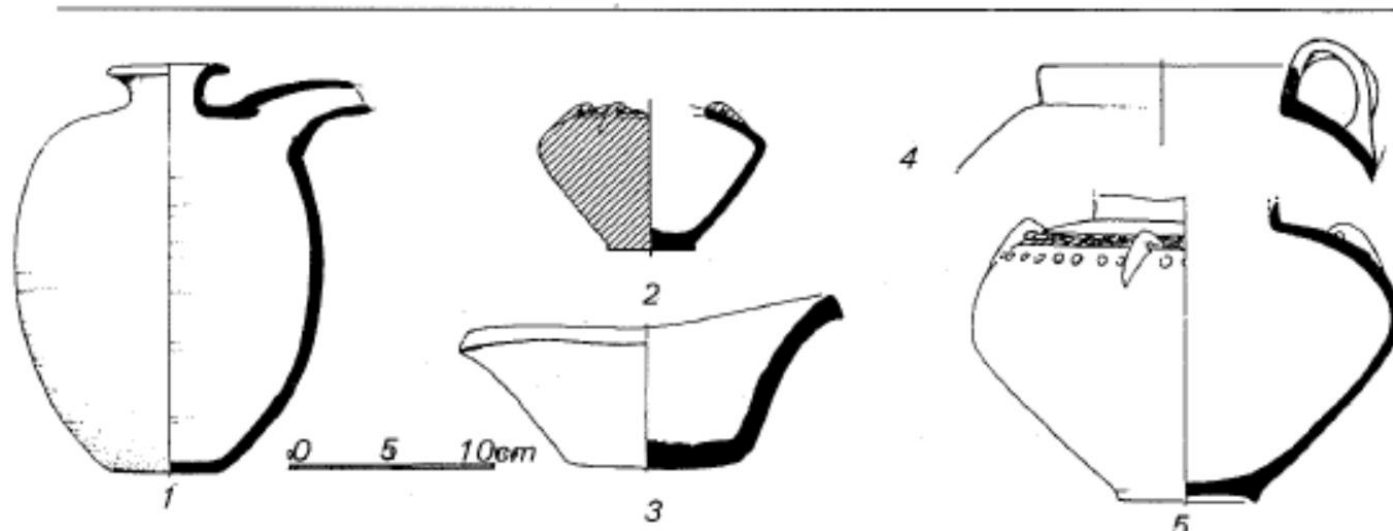
10. Susa, période II. Plan de maison du niveau 18 de l'acropole. Voir p. 55.

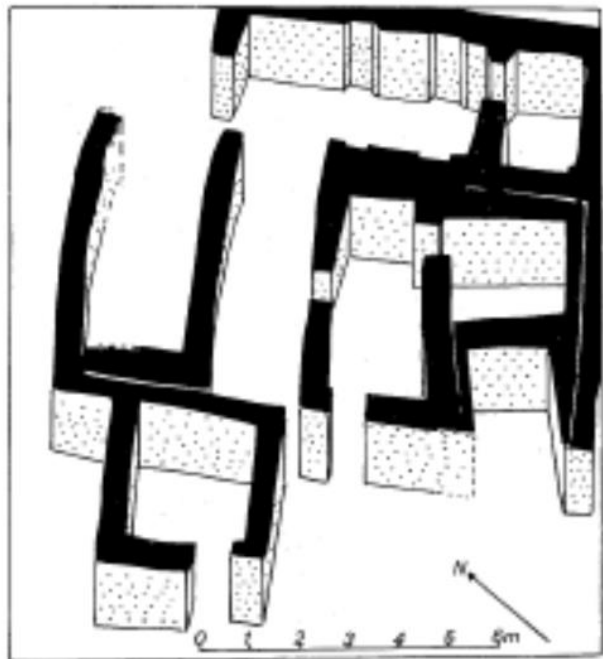


11. Susa, période II. Plan de maison du niveau 17 B 2 (Uruk Récent) Voir p. 55.

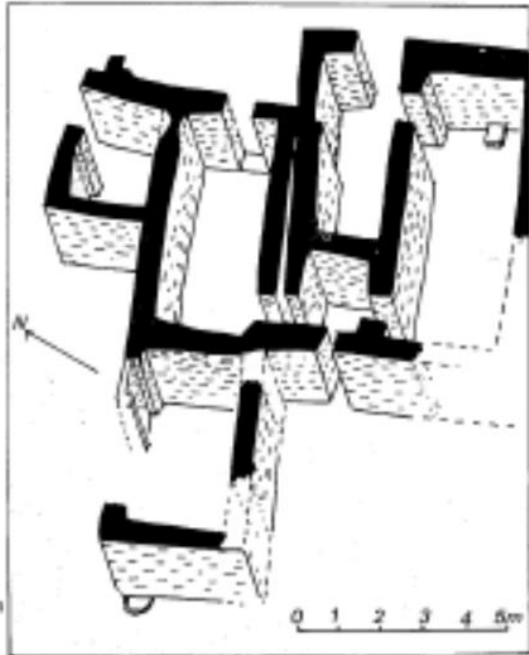
Data (a.C.)	Lowland	Highland	Mesopotamia
4300	Susa I	Tal-i-Bakun A III-IV	Ubaid III-IV
3800-3100	Susa II	Tal-i Bakun A (Lapui) Tal-i Malyan early Banesh	Uruk medio e tardo

- Susa II
 - Cambio nell'orientamento architettonico
 - Dimensioni dei mattoni
 - Repertorio ceramico che si orienta verso il repertorio della mesopotamia meridionale





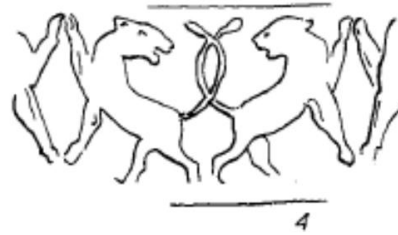
10. Susa, période II. Plan de maison du niveau 18 de l'acropole. Voir p. 55.



11. Susa, période II. Plan de maison du niveau 17 B 2 (Uruk Récent). Voir p. 56.

Data (a.C.)	Lowland	Highland	Mesopotamia
4300	Susa I	Tal-i-Bakun A III-IV	Ubaid III-IV
3800-3100	Susa II	Tal-i Bakun A (Lapui) Tal-i Malyan early Banesh	Uruk medio e tardo

- Susa II
 - Cambio nell'orientamento architettonico
 - Dimensioni dei mattoni
 - Repertorio ceramico che si orienta verso il repertorio della mesopotamia meridionale

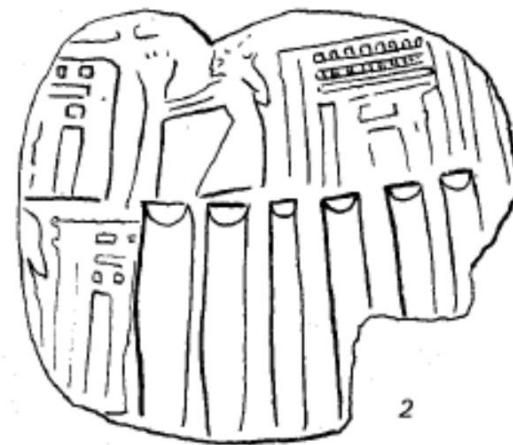
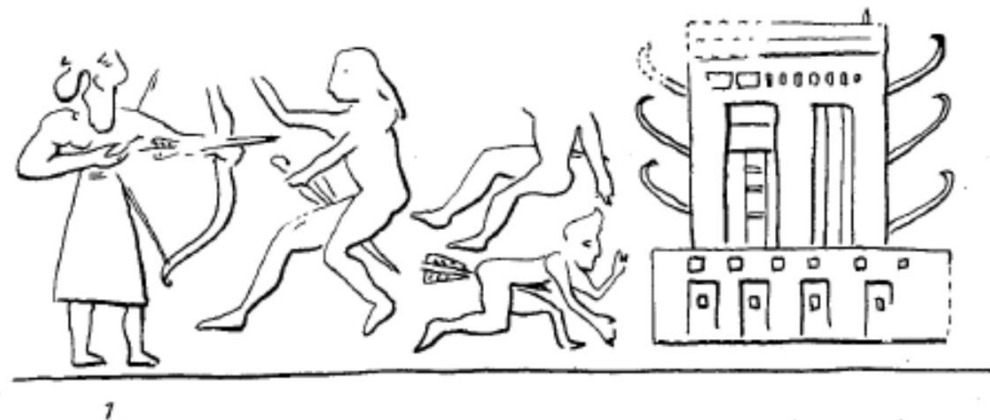


20. Susa. Période II. Empreintes de cachets et sceaux-cylindres. Voir p. 60, 61, 88,89,100.



20. Suse. Période II. Empreintes de cachets et sceaux-cylindres. Voir p. 60, 61, 88,89,100.

Data (a.C.)	Lowland	Highland	Mesopotamia
4300	Susa I	Tal-i-Bakun A III-IV	Ubaid III-IV
3800-3100	Susa II	Tal-i Bakun A (Lapui) Tal-i Malyan early Banesh	Uruk medio e tardo

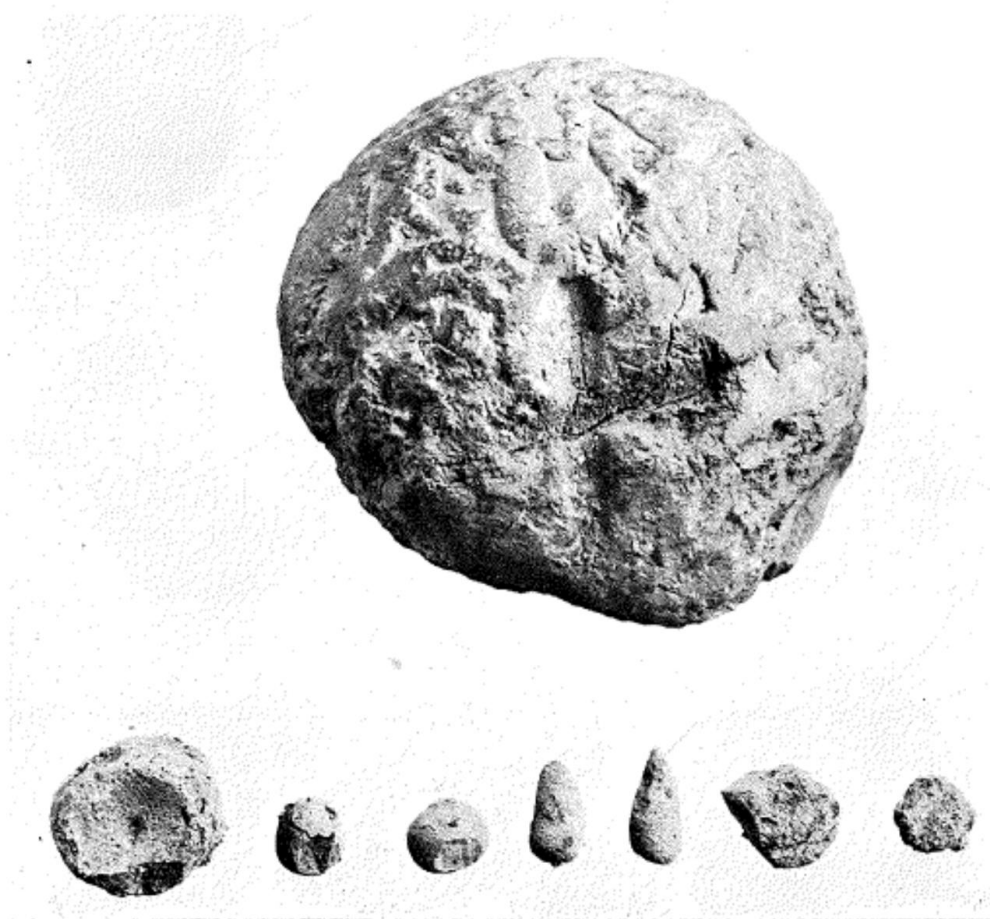
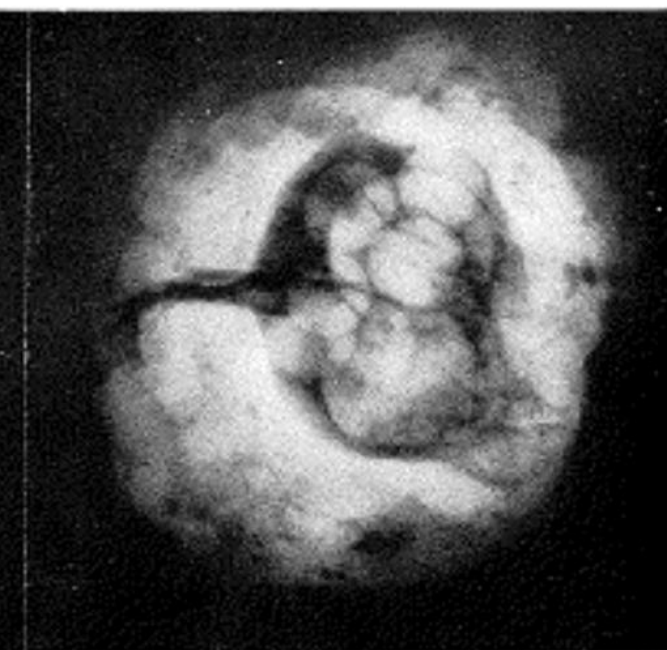
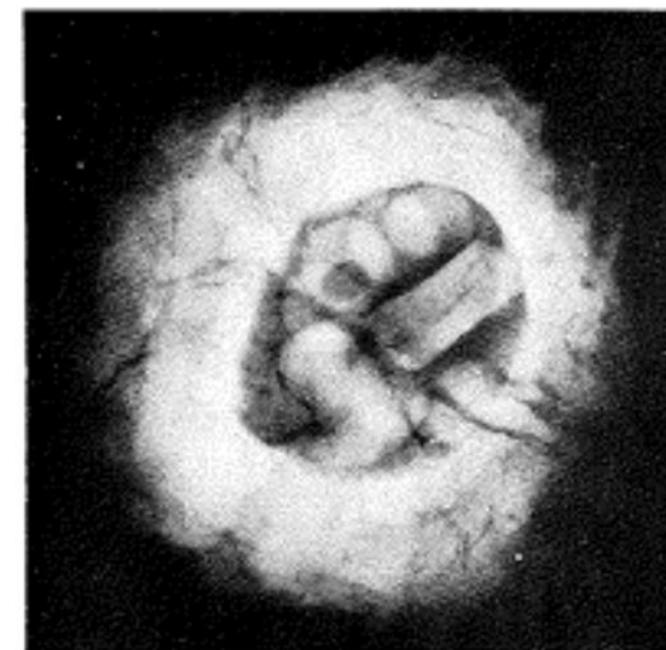
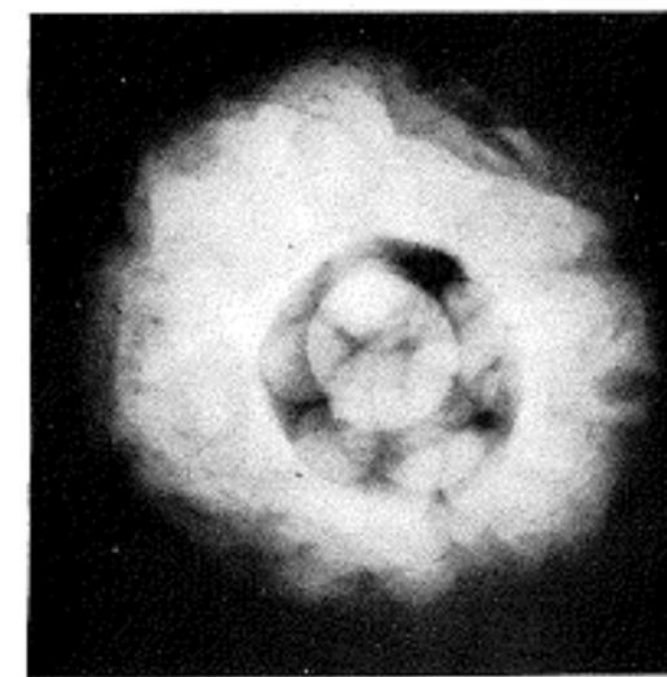


21. Suse. Période II. Empreintes de sceaux-cylindres Voir p. 59, 61, 88, 163, 198.

Susa II

- Sistema amministrativo della bassa mesopotamia
- Specializzazione della produzione
- Figura dominante re sacerdote?

Susa acropoli	Tipo documento/forma
II, liv. 18	Bullae: sferiche con tokens Tavolette: arrotondate con segni numerici e sigillate



28. Susa, période II. Bulle-enveloppe et une partie de son contenu Voir p. 55, 78, 81, 84.

29. Susa, période II. Bulle-enveloppe. Vue extérieure et radiographie. Voir p. 55, 79, 81, 85, 8

Susa acropoli	Tipo documento/forma	Data (a.C.)	Lowland	Highland	Mesopotamia
II, liv. 18	Bullae: sferiche con tokens Tavolette: arrotondate con segni numerici e sigillate	4300	Susa I	Tal-i-Bakun A III-IV	Ubaid III-IV
		3800-3100	Susa II	Tal-i Bakun A (Lapui) Tal-i Malyan early Banesh	Uruk medio e tardo

81, 85.



32. Suse. Période II. Tablette scellée avec signes numéraux. Voir p. 59, 79, 81, 86.



33. Suse. Période II. Tablette scellée avec signes Voir p. 59, 62, 76, 79, 80, 86.

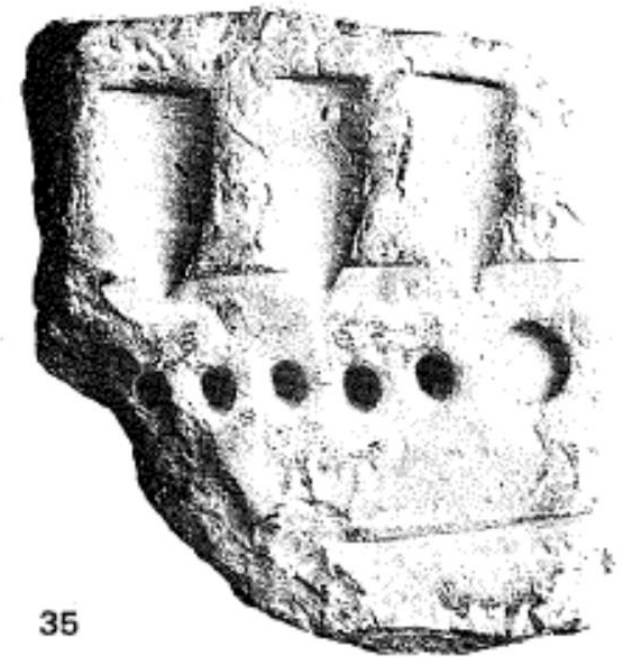
Susa acropoli	Tipo documento/forma
II, liv. 18 3300 a.C.	Bullae: sferiche con tokens Tavolette: arrotondate con sigilli
II, liv. 17 3200-3100	Tavolette a cuscinetto: segni numerici + sigilli
II, liv. 17x	Tavolette a cuscinetto: segni numerici + sigilli+ pittogramma

Data (a.C.)	Lowland	Highland	Mesopotamia
4300	Susa I	Tal-i-Bakun A III-IV	Ubaid III-IV
3800-3100	Susa II	Tal-i Bakun A (Lapui) Tal-i Malyan early Banesh	Uruk medio e tardo

- Susa II
 - Sistema amministrativo della bassa mesopotamia
 - Solo tre dei tredici sistemi numerici usati ad Uruk vennero introdotti a Susa



34



35

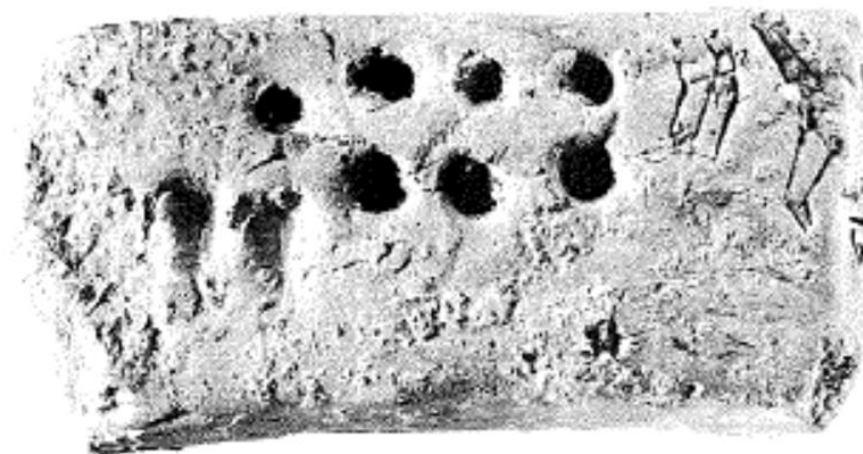
34. Suse Période II. Tablette-coussin portant un signe graphique. Voir p. 59, 62, 63, 79, 86, 95.

35. Suse. Période II. Tablette avec sceau de style de Djemdet-Nasr Voir p. 62, 83, 84, 94.

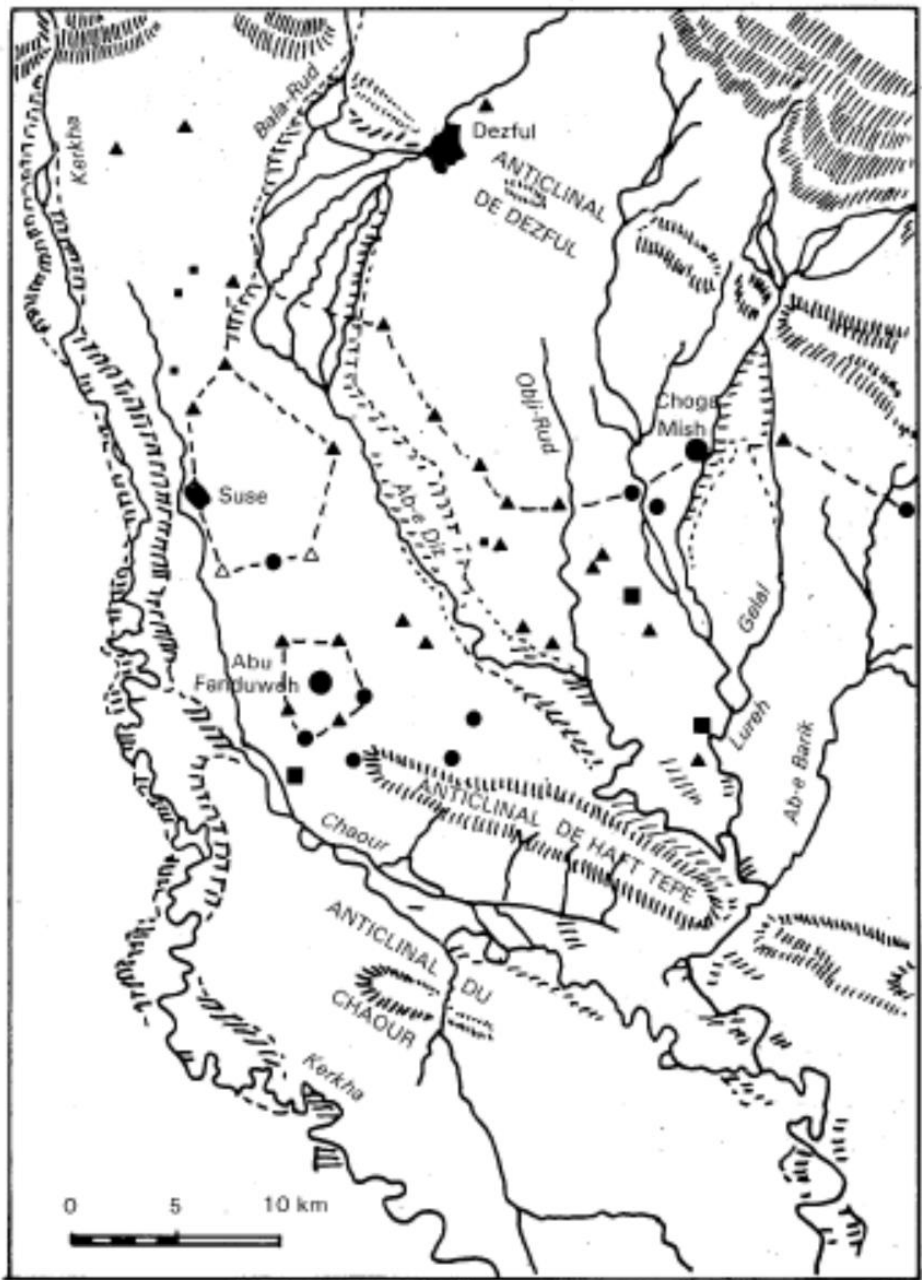
Susa acropoli	Tipo documento/forma
II, liv. 18	Bullae: sferiche con tokens Tavolette: arrotondate con segni numerici e sigillate
II, liv. 17	Tavolette a cuscinetto: segni numerici + sigilli
II, liv. 17x	Tavolette a cuscinetto: segni numerici + sigilli+ pittogramma
III 16	Tavolette rettangolari: segni numerici, pittogrammi, eventuale sigillatura



46. Suse. Période III, proto-élamite. Tablette en forme de coussin Voir p. 57, 94, 99.



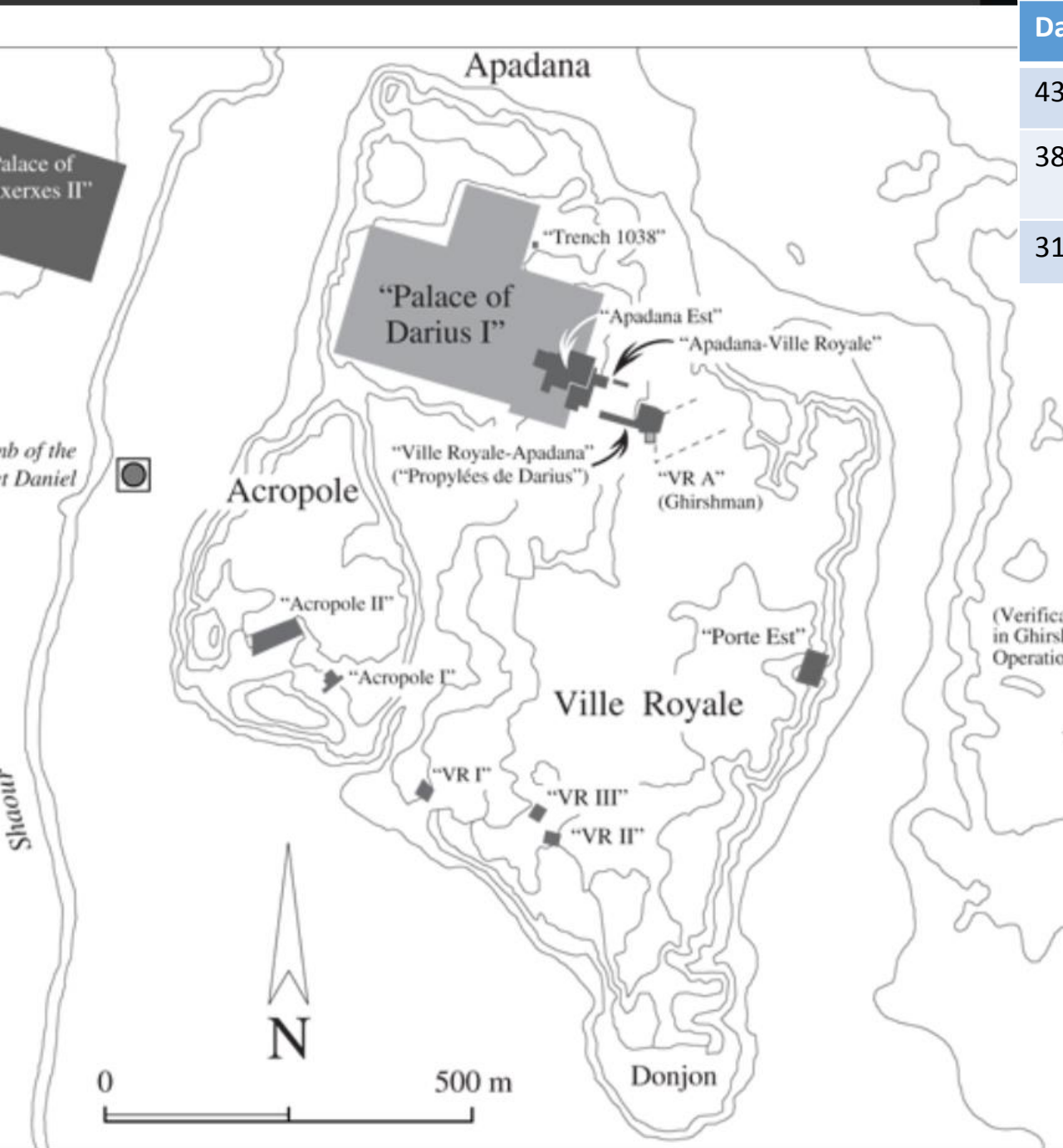
47. Suse. Période III, proto-élamite. Tablette en forme de coussin Voir p. 95,



- ○ Grand centre
- □ Petite ville
- ○ Grand village
- ▲ △ Village
- • Village spécialisé

Data (a.C.)	Lowland	Highland	Mesopotamia
4300	Susa I	Tal-i-Bakun A III-IV	Ubaid III-IV
3800-3100	Susa II	Tal-i Bakun A (Lapui) Tal-i Malyan early Banesh	Uruk medio e tardo

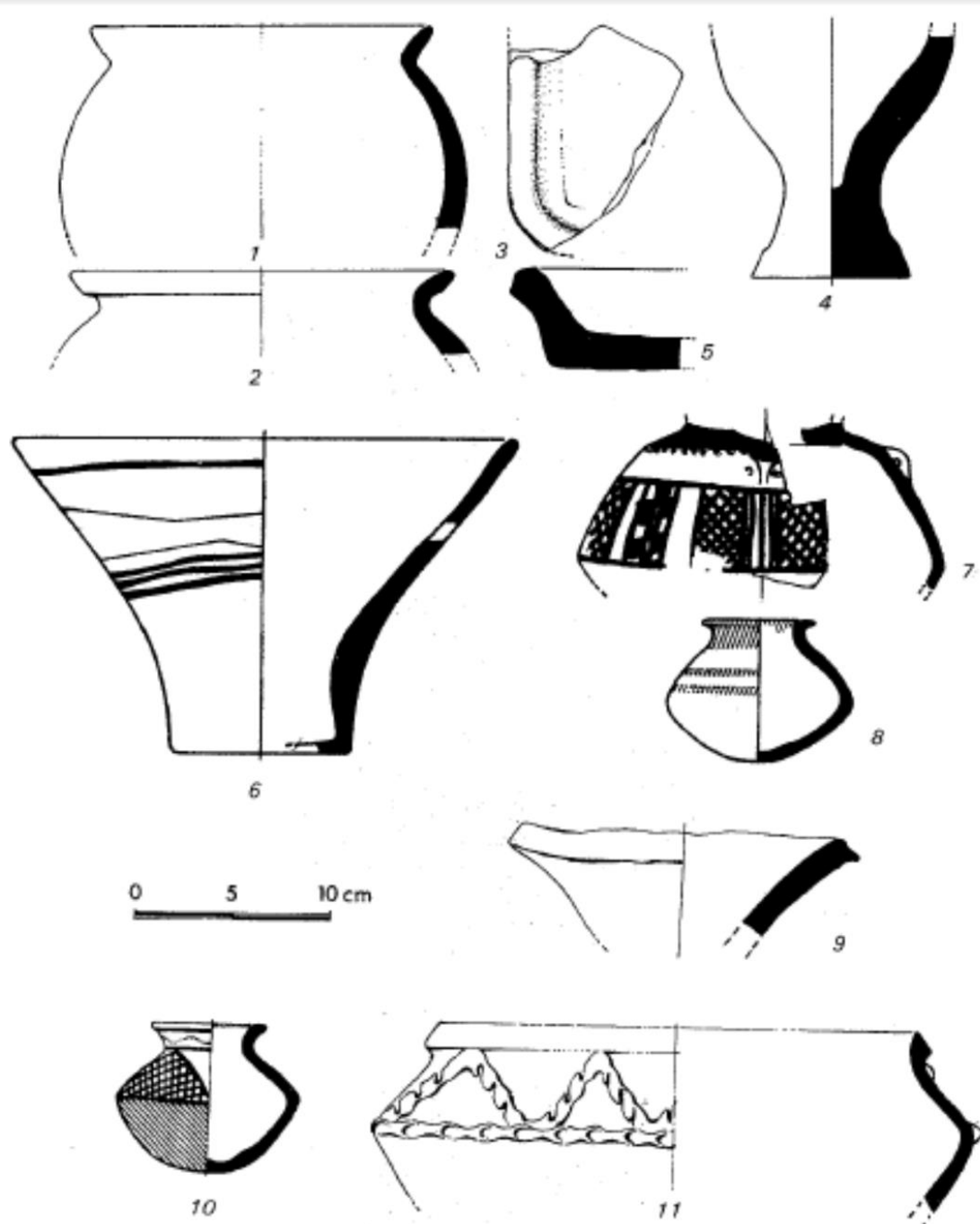
- Susa II
 - Cambio nell'orientamento architettonico
 - Dimensioni dei mattoni
 - Repertorio ceramico che si orienta verso il repertorio della mesopotamia meridionale
 - **Centralizzazione della produzione ceramica**
 - **Aumento del numero degli insediamenti nella regione.**
 - **Aumento del numero di centri maggiori**
 - **Nascita delle città basse (Susa, Choga Mish, Abu Fanduweh)**



Data (a.C.)	Lowland	Highland	Mesopotamia
4300	Susa I	Tal-i-Bakun A III-IV	Ubaid III-IV
3800-3100	Susa II	Tal-i Bakun A (Lapui) Tal-i Malyan early Banesh	Uruk medio e tardo
3100-2900	Susa III	Tal-i Malyan late Banesh	Uruk Tardo/Jemed nasr

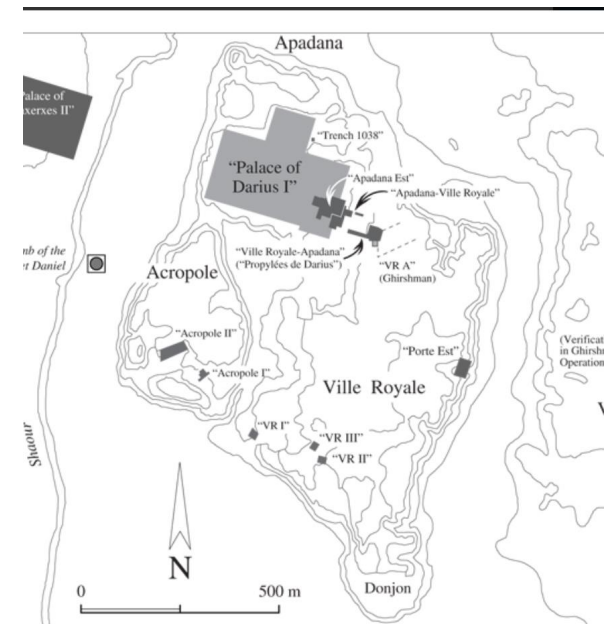
- Occupazione Susa III attestata solo sull'acropoli
- Di nuovo rottura con il repertorio di Susa II.
- Abbandono dell'alta terrazza.
- Testi di Susa III (detti anche Protoelamiti)

The main sites (indicated by numerals) worked at Susa under the direction of Jean Perrot



Data (a.C.)	Lowland	Highland	Mesopotamia
4300	Susa I	Tal-i-Bakun A III-IV	Ubaid III-IV
3800-3100	Susa II	Tal-i Bakun A (Lapui) Tal-i Malyan early Banesh	Uruk medio e tardo
3100-2900	Susa III	Tal-i Malyan late Banesh	Uruk Tardo/Jemed nasr

- Occupazione Susa III attestata solo sull'acropoli
- Di nuovo rottura con il repertorio di Susa II.

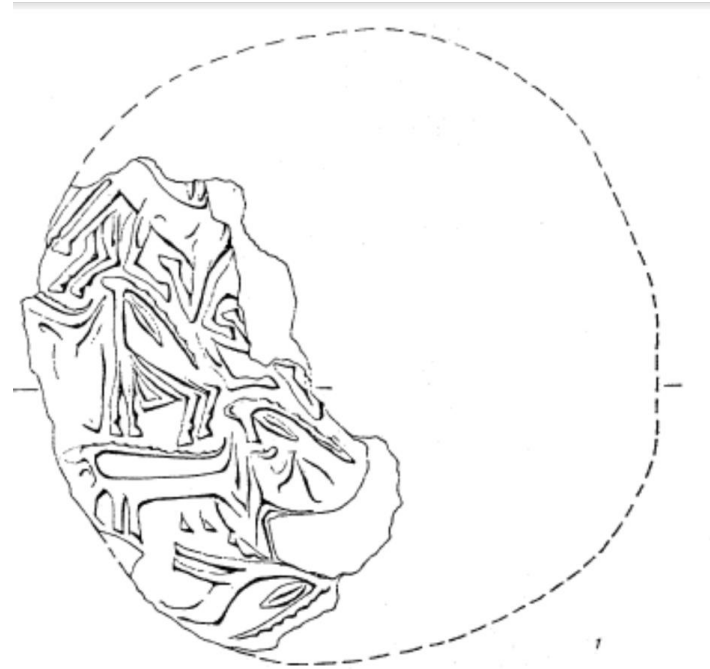


The main sites (indicated by numerals) worked at Susa under the direction of Jean Perrot

Data (a.C.)	Lowland	Highland	Mesopotamia
3100-2900	Susa III	Tal-i Malyan late Banesh	Uruk Tardo/Jemed nasr



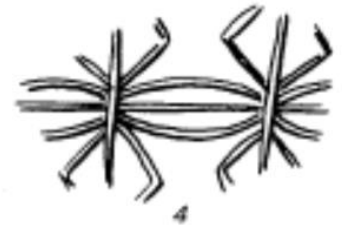
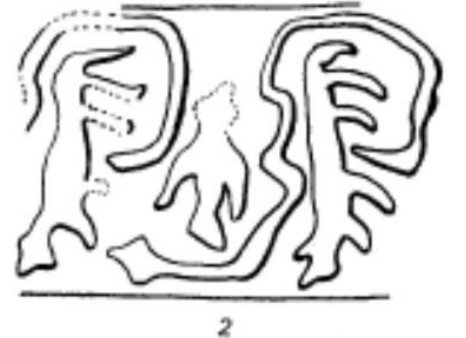
Susa periodo III



Coevo Susa periodo III.



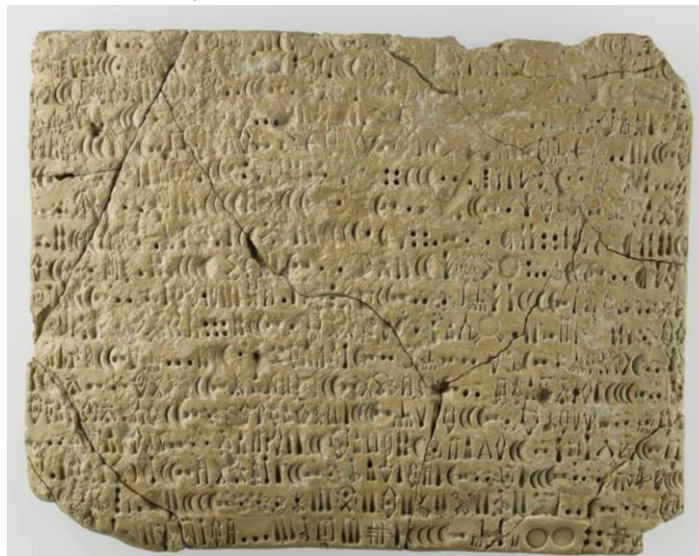
57. Tépé Yahya. Niveau IV C. Empreinte proto-élamite. Voir p. 113.



58. Shahr-i Sokhta. Période 1. Glyptique proto-élamite Voir p. 99, 115.

- Occupazione Susa III attestata solo sull'acropoli
- Di nuovo rottura con il repertorio di Susa II.
- Abbandono dell'alta terrazza.
- Testi di Susa III (detti anche Protoelamiti)

Data (a.C.)	Lowland	Highland	Mesopotamia
4300	Susa I	Tal-i-Bakun A III-IV	Ubaid III-IV
3800-3100	Susa II	Tal-i Bakun A (Lapui) Tal-i Malyan early Banesh	Uruk medio e tardo
3100-2900	Susa III	Tal-i Malyan late Banesh	Uruk Tardo/Jemed nasr



Période III. Tablette proto-élamite. Voir p. 95, 101.

- Occupazione Susa III attestata solo sull'acropoli
- Di nuovo rottura con il repertorio di Susa II.
- Abbandono dell'alta terrazza.
- **Testi di Susa III (detti anche Protoelamiti)**

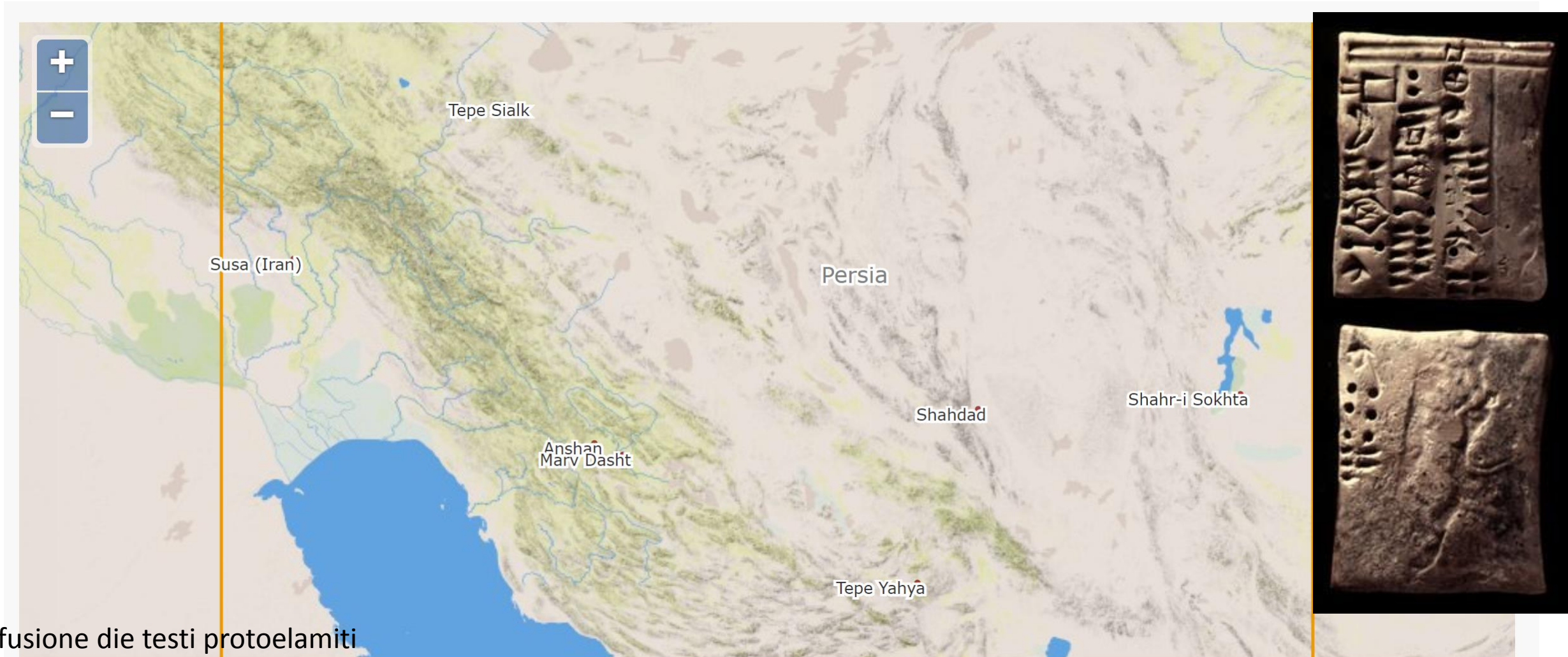
Data (a.C.)	Lowland	Highland	Mesopotamia
4300	Susa I	Tal-i-Bakun A III-IV	Ubaid III-IV
3800-3100	Susa II	Tal-i Bakun A (Lapui) Tal-i Malyan early Banesh	Uruk medio e tardo
3100-2900	Susa III	Tal-i Malyan late Banesh	Uruk Tardo/Jemed nasr



Caratteristica	Protocuneiforme	Susa III, protoelamita	
Forma	Fronte convessa		Simile
Uso dei lati	Entrambi i lati usati		simile
Text wrapping	Retro: da dx verso sx	Da sx verso dx	Diverso
Archiviazione	Lato sx è indicizzato	Lato sx non si distingue	Diverso
Semantica			Alcuni aspetti in comune (due su tre)
Sistemi numerici			Alcuni aspetti in comune (quattro su otto)
Ideogrammi		Molto astratti	diverso

- Testi di Susa III (detti anche Protoelamiti)
- Protoelamita 3100-2900 a. C.

Data (a.C.)	Lowland	Highland	Mesopotamia
4300	Susa I	Tal-i-Bakun A III-IV	Ubaid III-IV
3800-3100	Susa II	Tal-i Bakun A (Lapui) Tal-i Malyan early Banesh	Uruk medio e tardo
3100-2900	Susa III	Tal-i Malyan late Banesh	Uruk Tardo/Jemed nasr



Diffusione die testi protoelamiti

- Protoelamita 3100-2900 a. C.
- Paleoelamita 2200-1900 a. C. (elamita lineare)
- Una determinazione di parentela linguistica tra i due gruppi è impossibile

Proto elamita



Sia il Proto-elamita che l'Elamita lineare sono a tutt'oggi scritture indecifrate. I segni pittografici che costituiscono l'inventario del Proto-elamita consistono di circa 400-800 caratteri, mentre l'Elamita lineare è formato da circa 100 segni. Al momento attuale, il numero di testi in Proto-elamita (Proto-elamita A) corrisponde all'incirca a 1600 testi, mentre diciotto iscrizioni in Elamita lineare su oggetti in pietra e argilla ed una iscrizione su un vaso d'argento sono note. La scrittura Proto-elamita era impressa o incisa su tavolette d'argilla, la maggior parte delle quali sono di contenuto amministrativo. La maggioranza di questi documenti, che risalgono al 3100-2900 a.C. ca., proviene da Susa.

(Gaspa
<http://mnamon.sns.it/index.php?page=Scrittura&id=9>)

paleo elamita (elamita lineare)

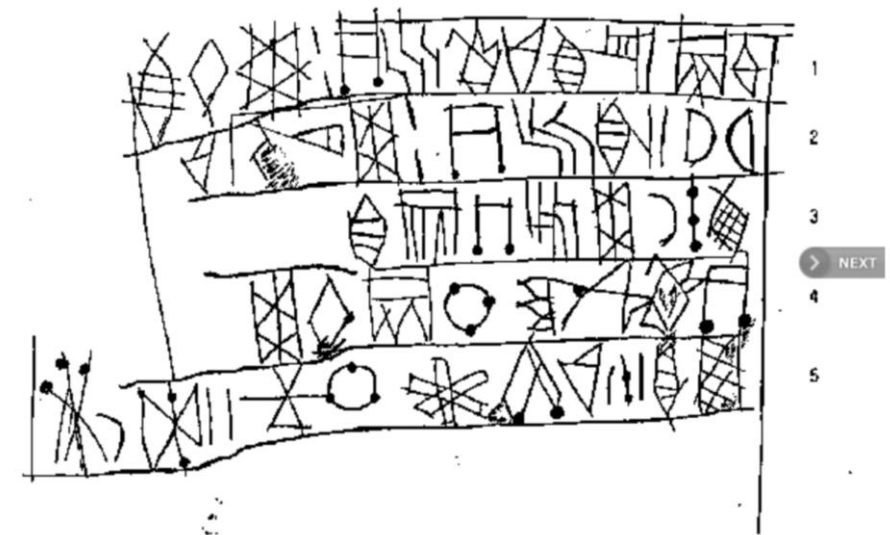
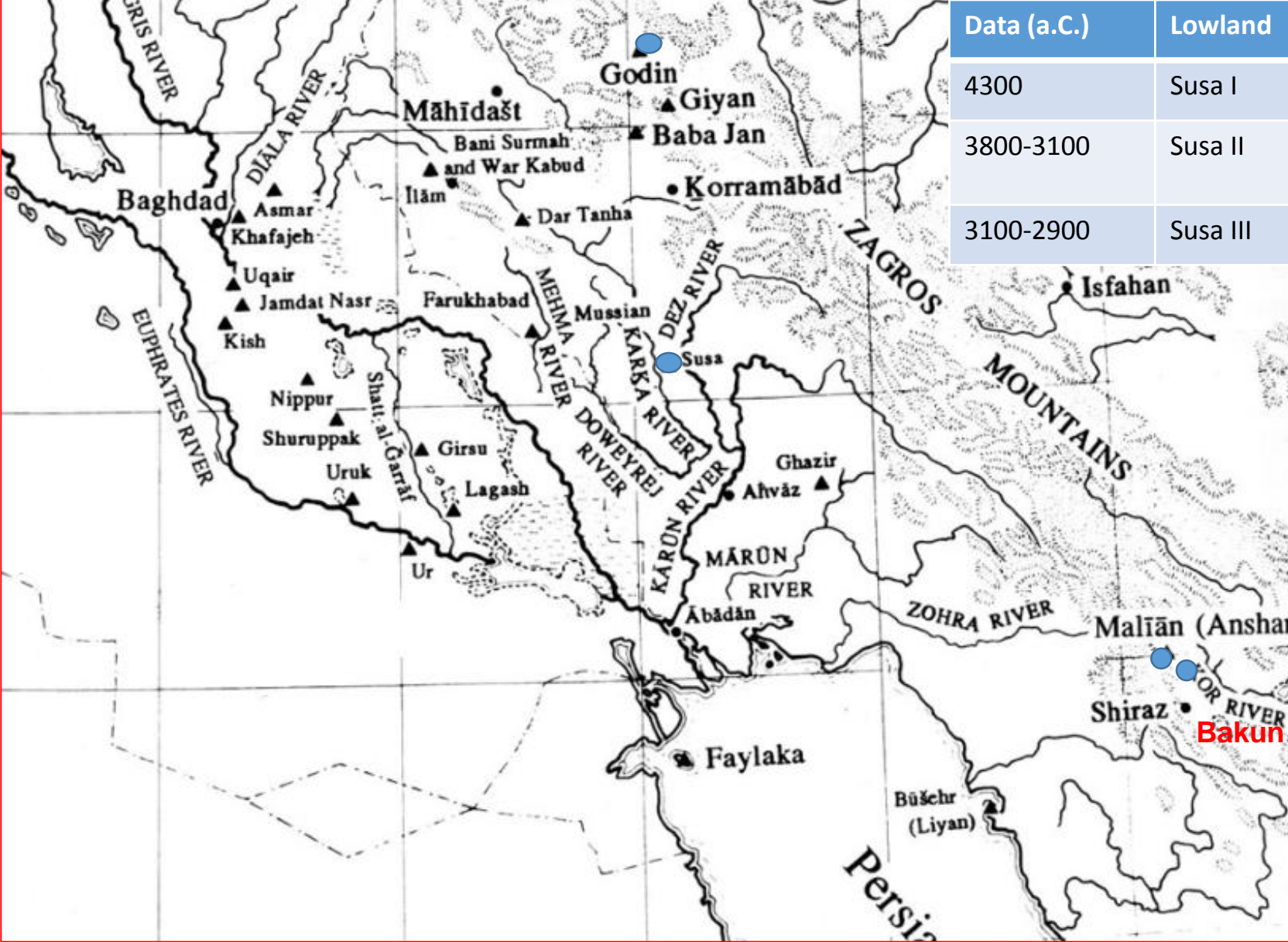


Figure 1. Linear Elamite text A, from the "table au lion" (Sb 17) in the Musée du Louvre, Paris. It is written from right to left and from top to bottom.



Data (a.C.)	Lowland	Highland	Mesopotamia
4300	Susa I	Tal-i-Bakun A III-IV	Ubaid III-IV
3800-3100	Susa II	Tal-i Bakun A (Lapui) Tal-i Malyan early Banesh	Uruk medio e tardo
3100-2900	Susa III	Tal-i Malyan late Banesh	Uruk Tardo/Jemed nasr

Maliān (Anshan)
Shiraz
Bakun

Data (a.C.)	Lowland	Highland	Mesopotamia
4300	Susa I	Tal-i-Bakun A III-IV	Ubaid III-IV
3800-3100	Susa II	Tal-i Bakun A (Lapui) Tal-i Malyan early Banesh	Uruk medio e tardo

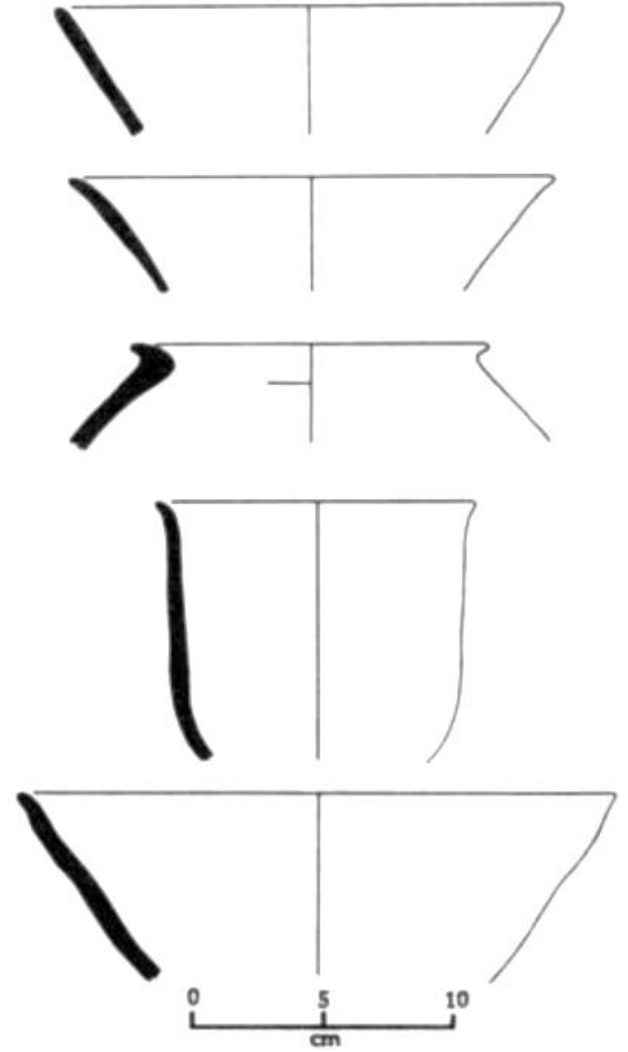
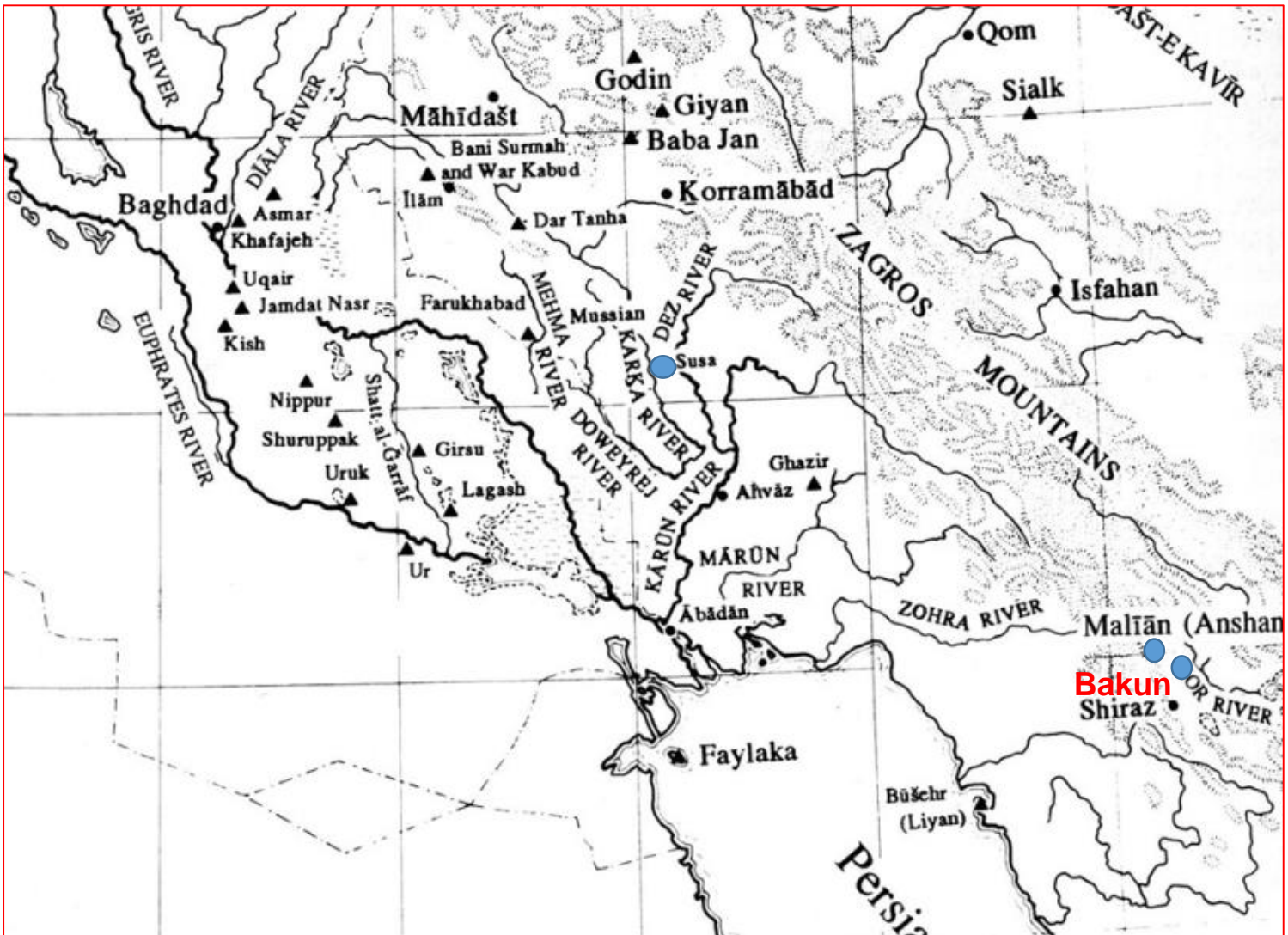
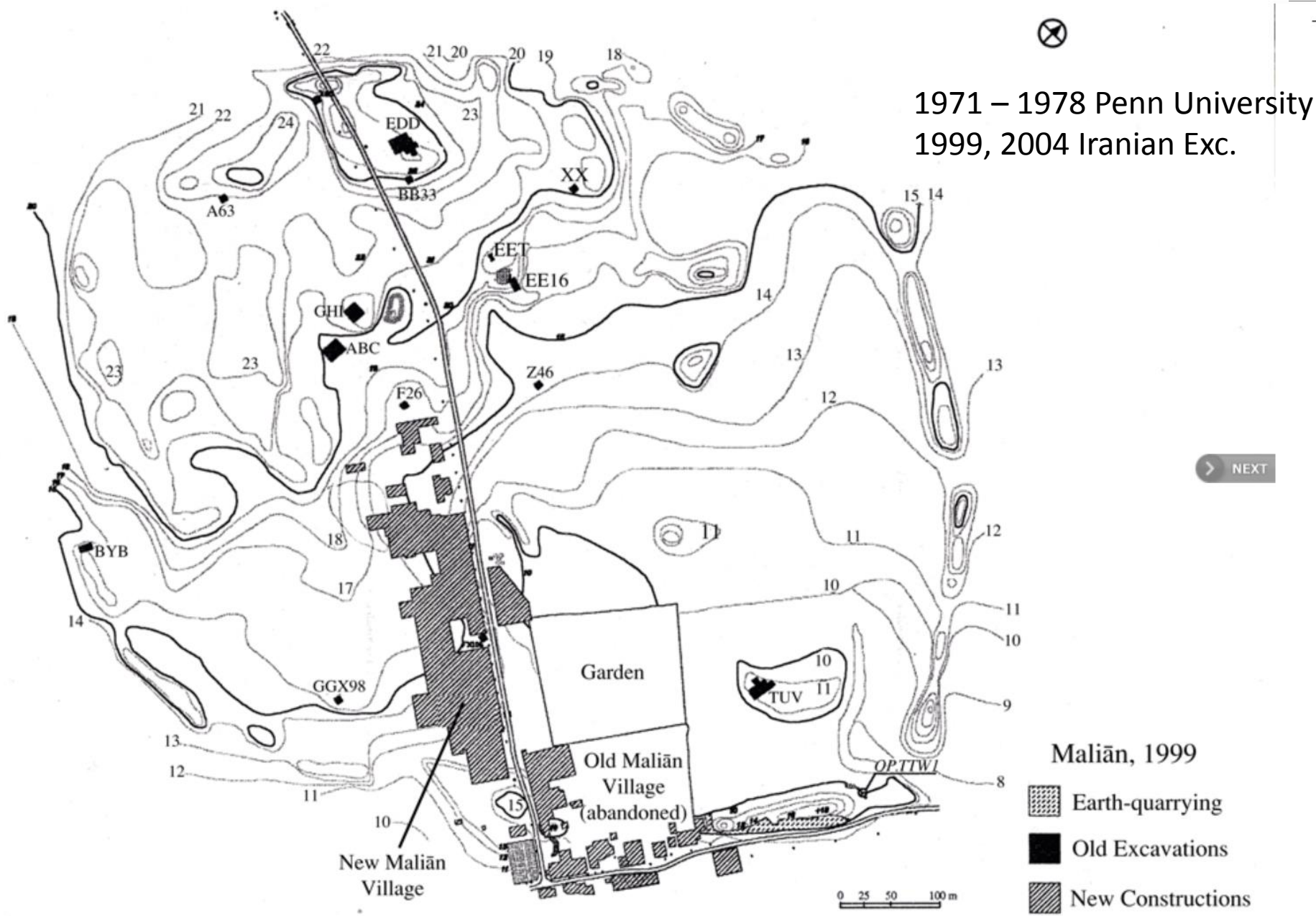





Figure 23. Lapui Ware (P-T).—1. KRB ceramic pro-



> NEXT

Maliān, 1999

-  Earth-quarrying
-  Old Excavations
-  New Constructions

Date	Period	Maliān Operations
	Islamic	Surface- NE corner, city wall embankment
← 600 CE	Sasanian	TUV- coin in burial EDD- coin, possible BL1 X65 - kiln
	Sasanian/Parthian	A63- disturbed architecture Surface- many sherds in SW quarter of site Test Trench D- upper building
50 BCE	Parthian	Z46- coin in burial GHI- coin in burial
300 BCE	<u>Achaemnid</u>	Surface- 7 sherds
600 BCE	Hiatus?	
900 BCE	<u>Qale/Middle Elamite</u>	EDD- BLs 3 & 4 BB33- Qale Kilns XX- BL 1 GHI- BL 1; ABC- upper wells Trench Test D- middle strata
	<u>Shogha</u>	A few surface sherds
1600 BCE		ABC- upper strata GHI- BLs 2-4 GGX98- all strata; FX106- all strata BY8- upper strata F26- upper strata; Test Trench D- lower strata
	<u>Kaftari</u>	
2200 BCE	Depopulation	Possible continuity only at <u>Maliān</u> , H5 sounding- upper strata
2600 BCE	<u>Late Banesh</u>	BY8- lower strata H5 sounding- lower strata TUV-BL 1
2900 BCE	Late Middle	ABC- BLs 2-4A TUV- BLs 2-3A
3000 BCE	Early Middle	ABC- BLs 4B-5 TUV- BL 3B
3400 BCE	Early <u>Banesh</u>	not known at <u>Maliān</u>
3500 BCE	<u>Lapui</u>	Surface- a few sherds
4000 BCE	<u>Bakun</u>	Surface- 12 sherds EE16 and Z46- a considerable number of sherds in disturbed contexts
5000 BCE	<u>Jari</u>	Surface- a few sherds
5800 BCE	<u>Musbki</u>	not identified at <u>Maliān</u>

Source: Sumner, 2003, Table 12.

FIGURE 1. The archeological site of Ma@li~n. (Map prepared by the Fars Archeology Project.)

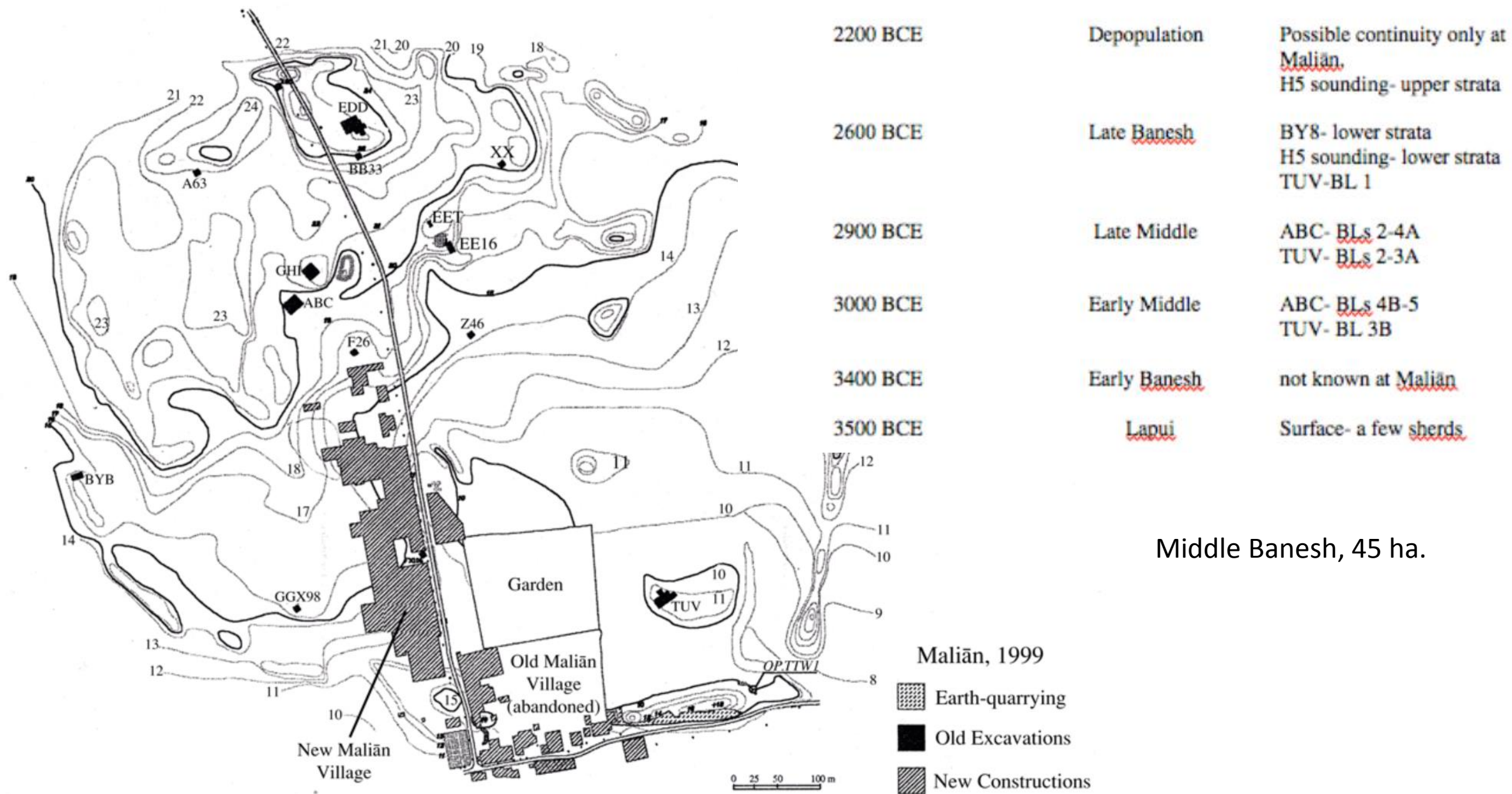
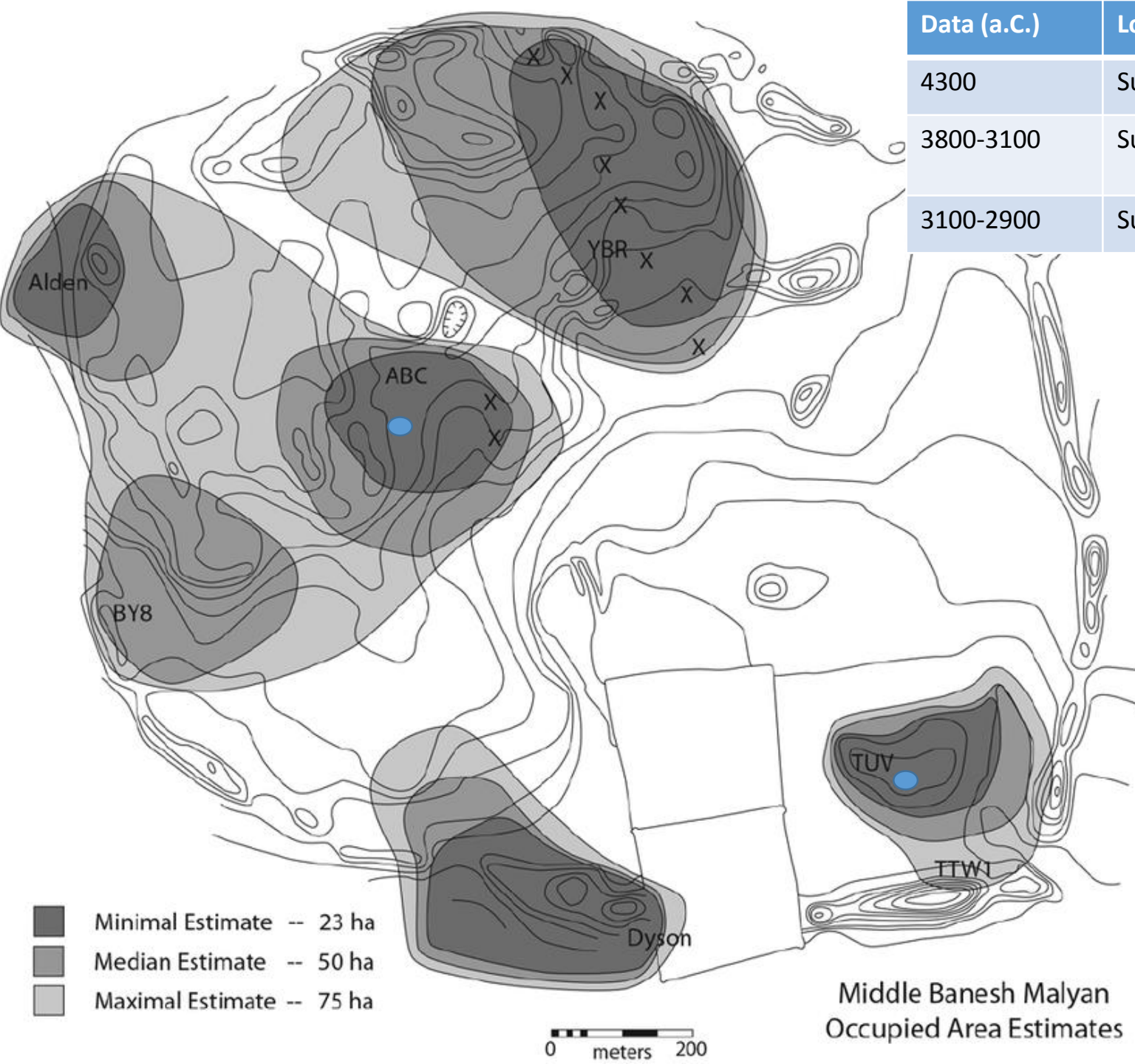


FIGURE 1. The archeological site of Ma@li~n. (Map prepared by the Fars Archeology Project.)



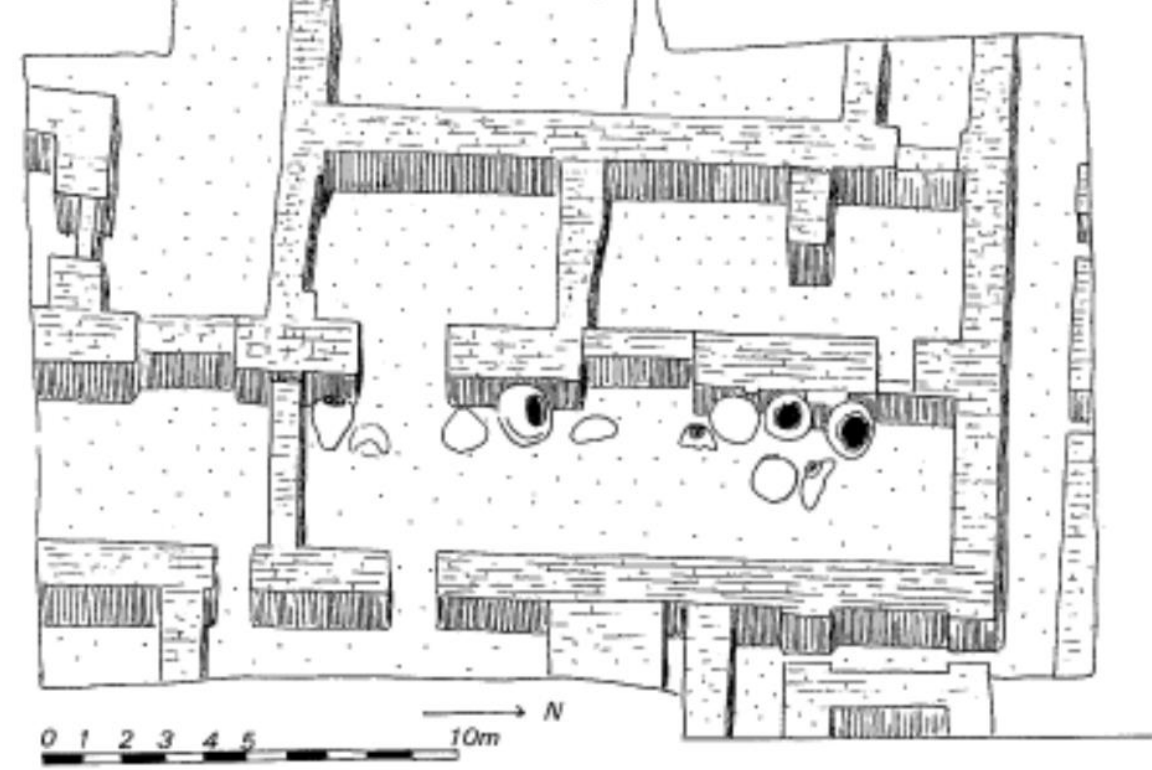
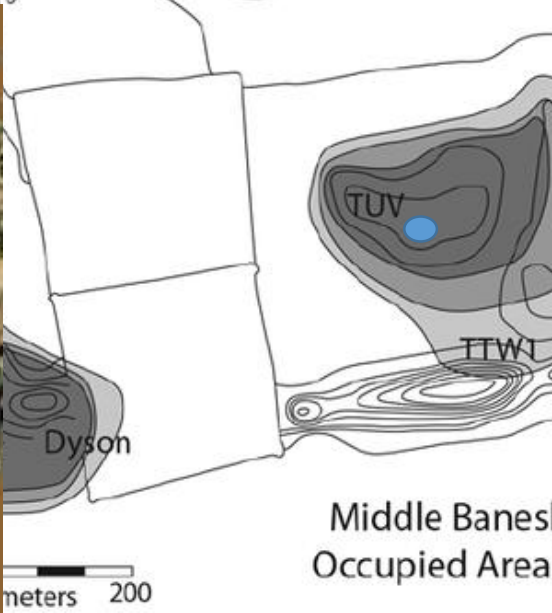
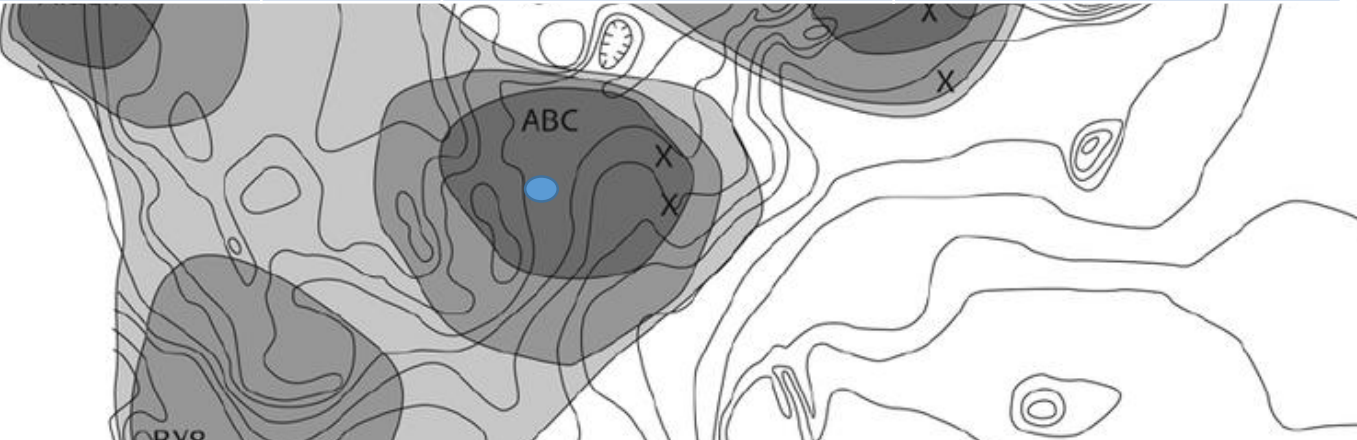
Data (a.C.)	Lowland	Highland	Mesopotamia
4300	Susa I	Tal-i-Bakun A III-IV	Ubaid III-IV
3800-3100	Susa II	Tal-i Bakun A (Lapui) Tal-i Malyan early Banesh	Uruk medio e tardo
3100-2900	Susa III	Tal-i Malyan late Banesh	Uruk Tardo/Jemed nasr

- Minimal Estimate -- 23 ha
- Median Estimate -- 50 ha
- Maximal Estimate -- 75 ha

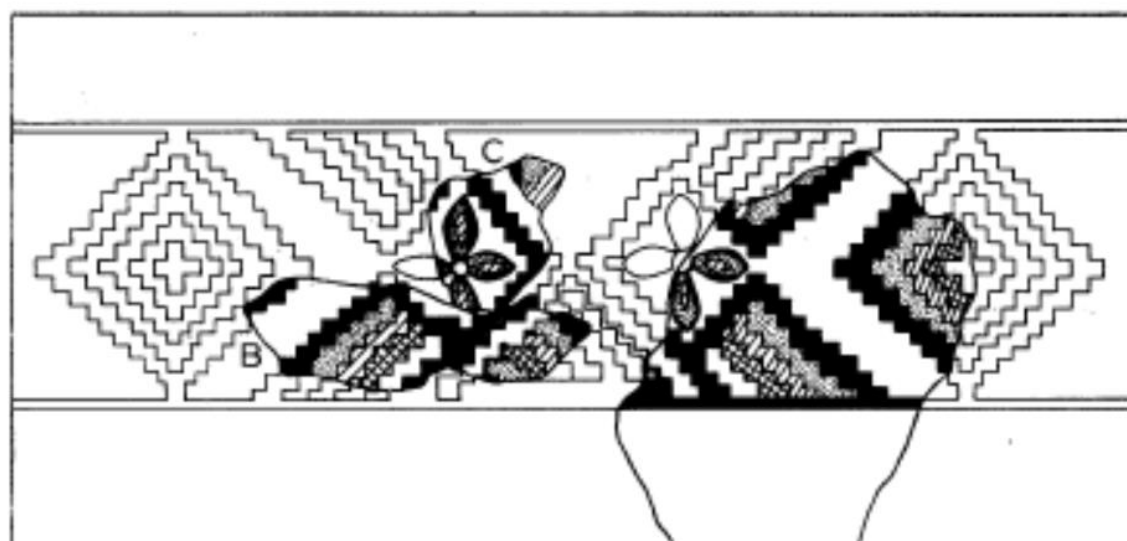


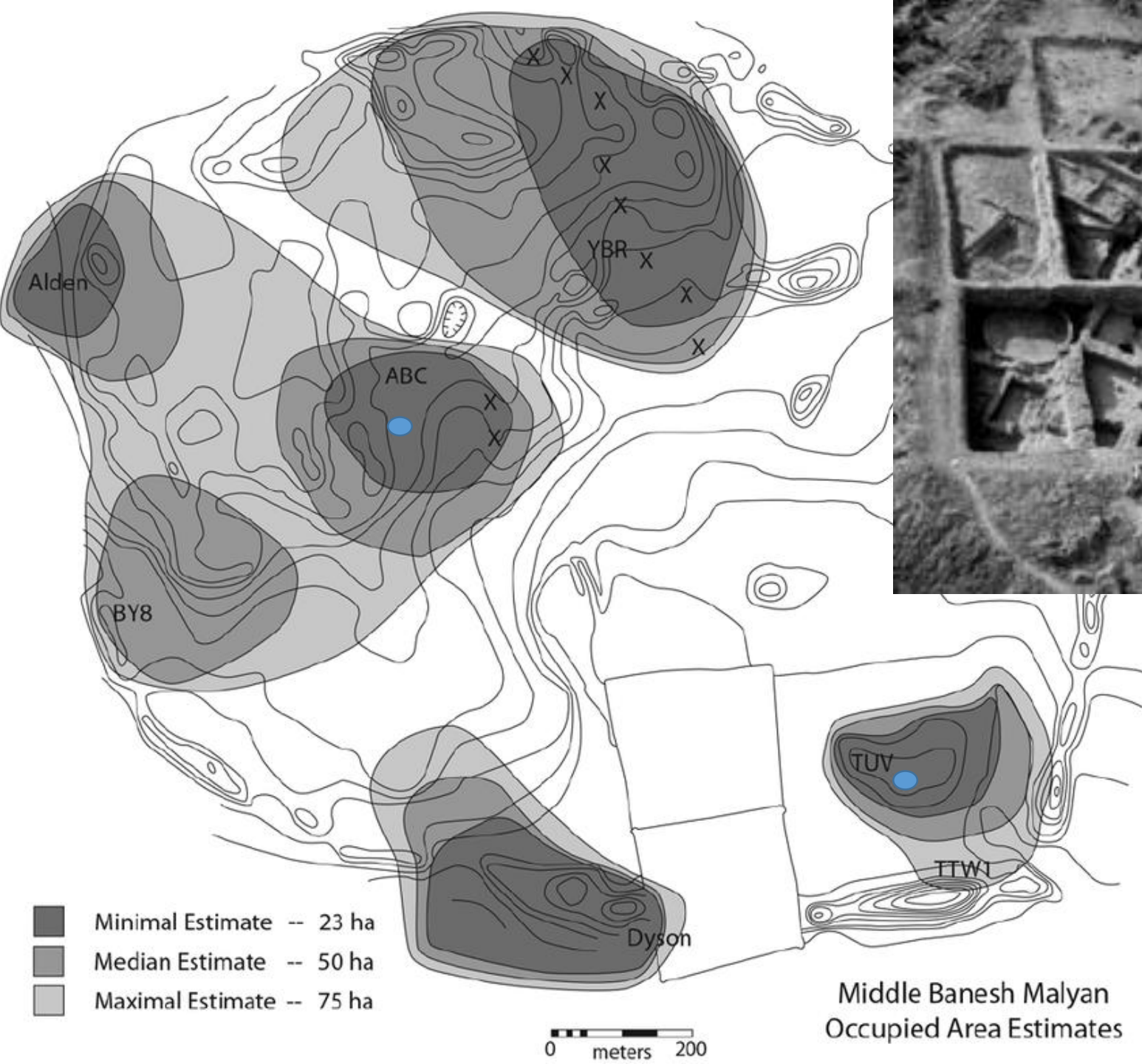
Middle Banesh Malyan
Occupied Area Estimates

Data (a.C.)	Lowland	Highland	Mesopotamia
4300	Susa I	Tal-i-Bakun A III-IV	Ubaid III-IV
3800-3100	Susa II	Tal-i Bakun A (Lapui) Tal-i Malyan early Banesh	Uruk medio e tardo
3100-2900	Susa III	Tal-i Malyan late Banesh	Uruk Tardo/Jemed nasr

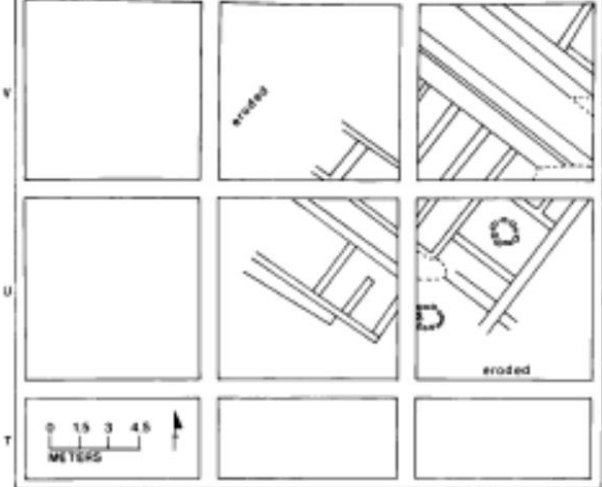


51. Tell-i Malyan (Anshan). Bâtiment proto-élamite. Niveau II Voir p. 107.

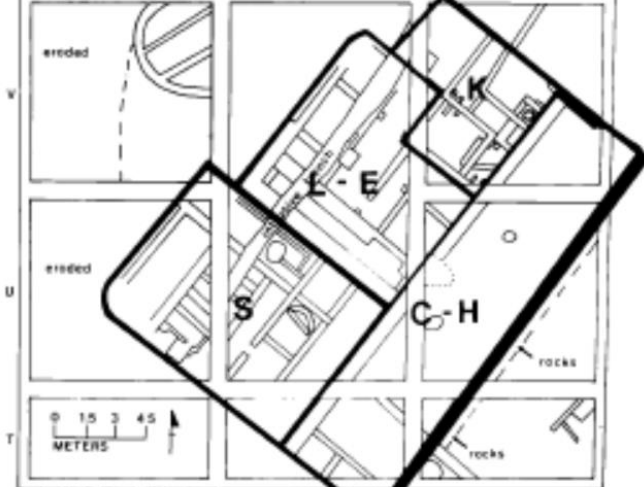




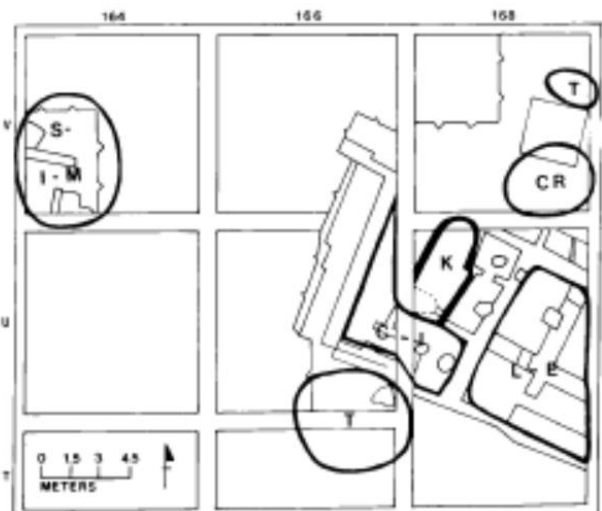
Middle Banesh Malyan
 Occupied Area Estimates



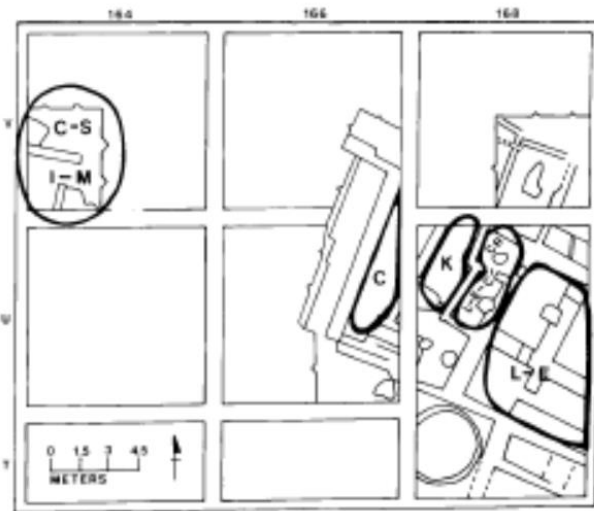
TUV (MALYAN): BUILDING LEVEL I



TUV (MALYAN): BUILDING LEVEL II



TUV (MALYAN): BUILDING LEVEL IIIA



TUV (MALYAN): BUILDING LEVEL IIIB

Figure 38. Distribution of key functions.

This figure summarizes the main functions which have been reconstructed for different sectors of TUV building levels II, IIIA, and IIIB. As explained in the text, identification of such functional sectors was not possible for B.L. I. In these plans, the key letters stand for the following uses of space:

- S = Storage area
- L-E = General living/entertainment quarters
- K = Kitchen area, generally with signs of meat processing
- C = Zone with heavy use of the half-ware special containers (trays, goblets and/or bevelled-rim bowls)
- H = Area where short term storage or temporary holding of materials was done
- I = Information processing or control activity zone
- M = Area of meat processing activities but without preserved kitchen installations
- T = Trash dumping zone

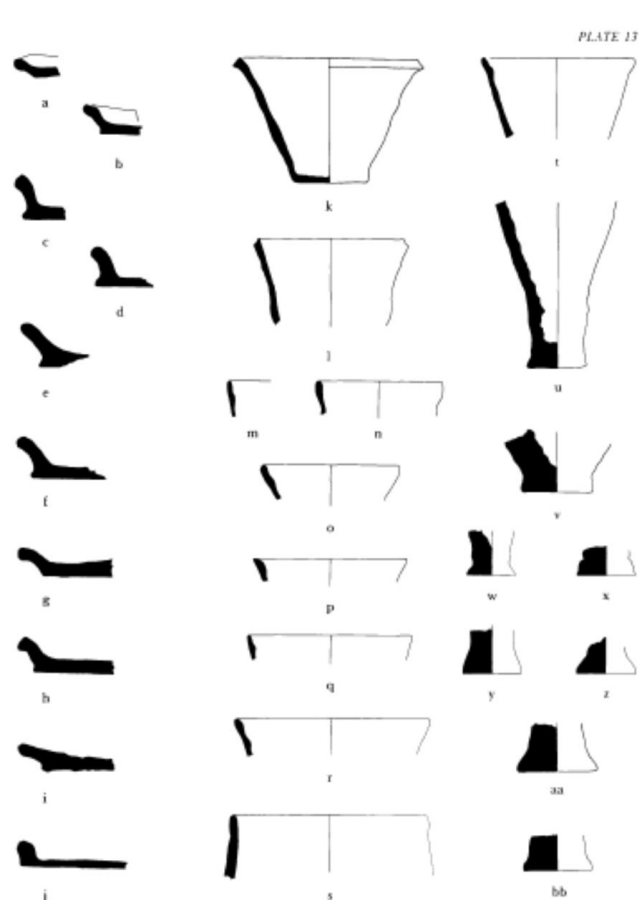
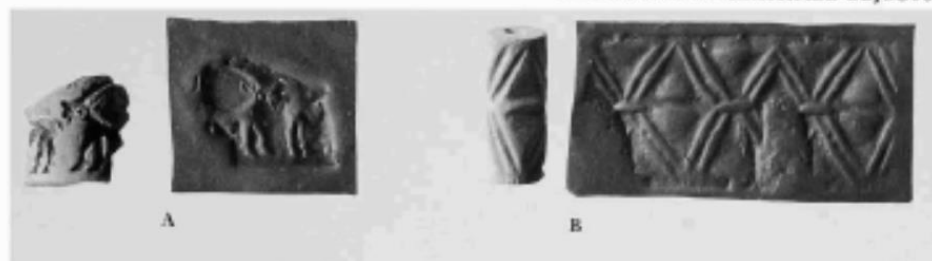


PLATE 37

CLASS 21 AND UNCLASSIFIED OBJECTS



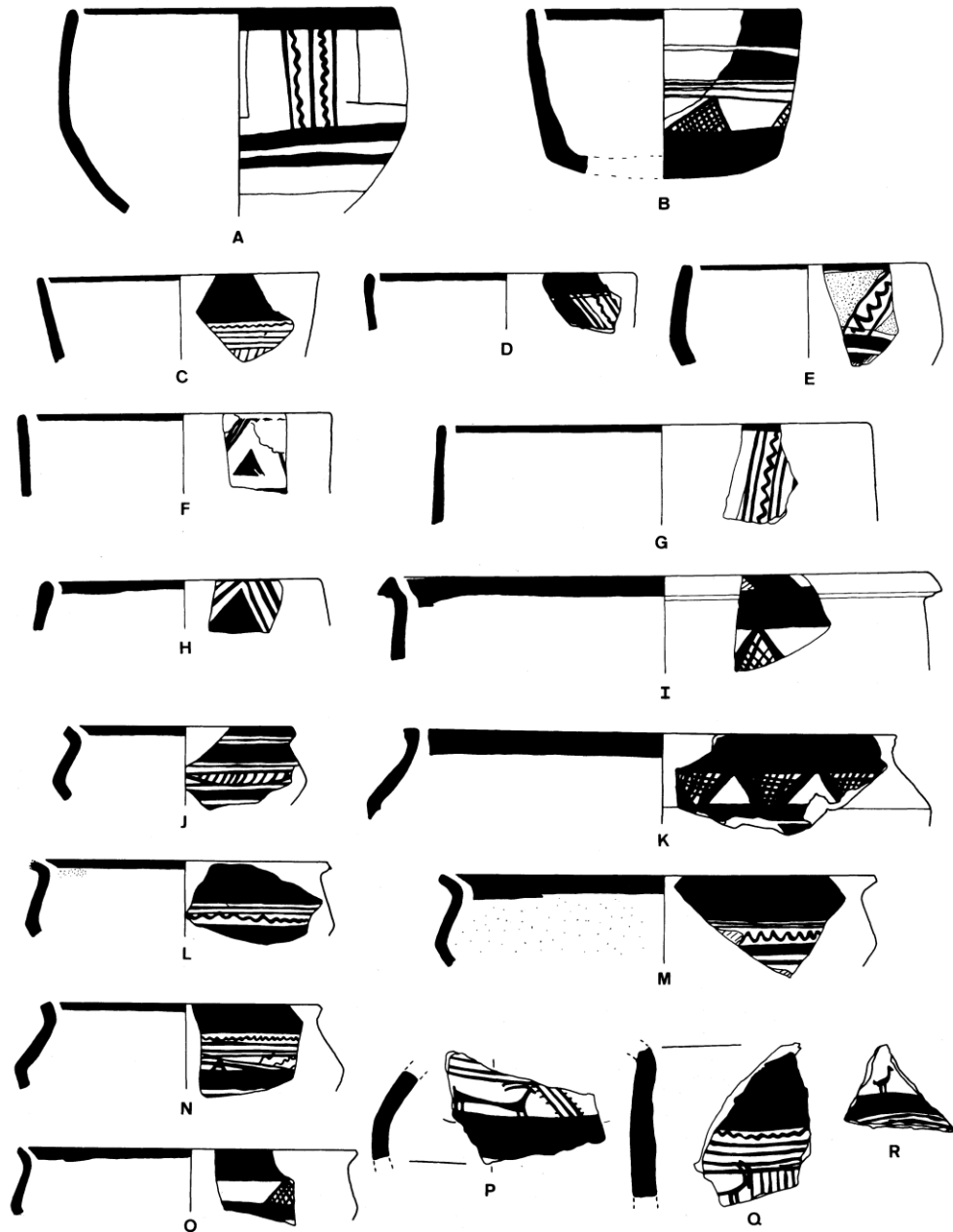
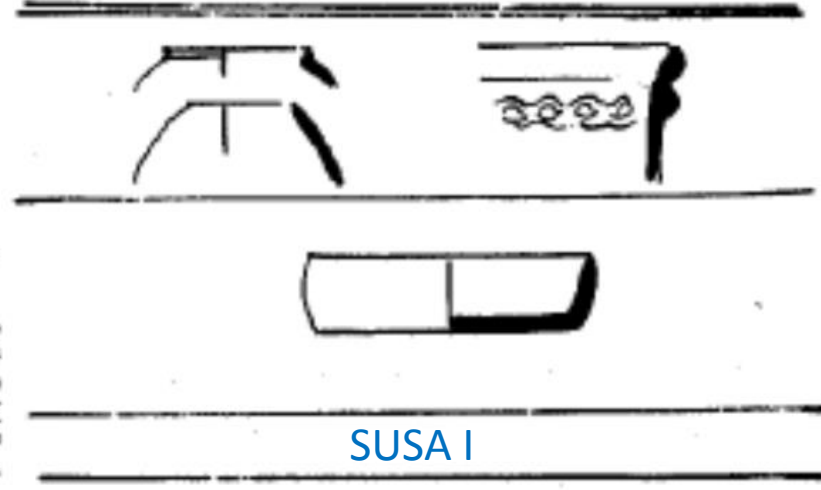


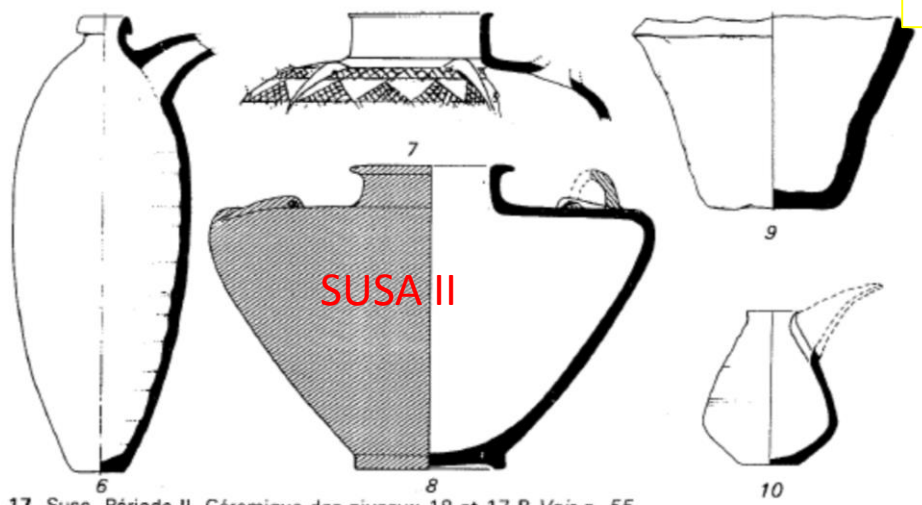
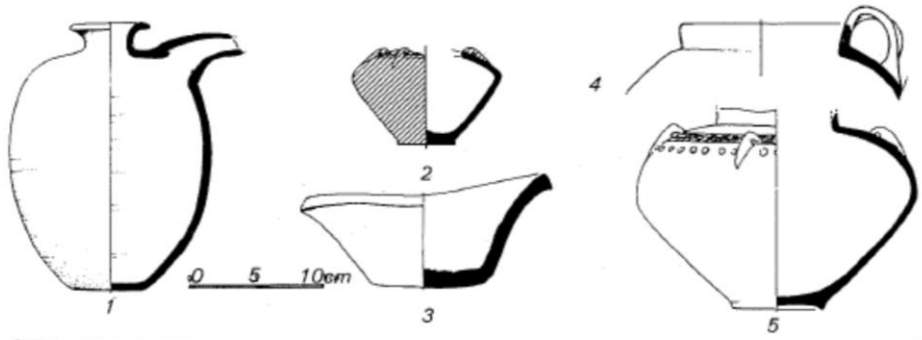
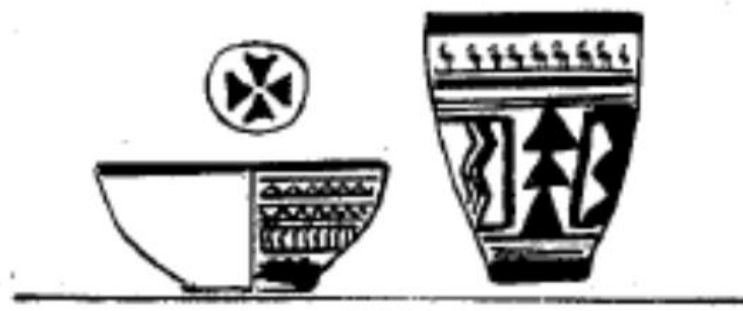
Fig. 3. Late Banesh grit-tempered ware from Operation By8. Scale 1:3.

Période 1

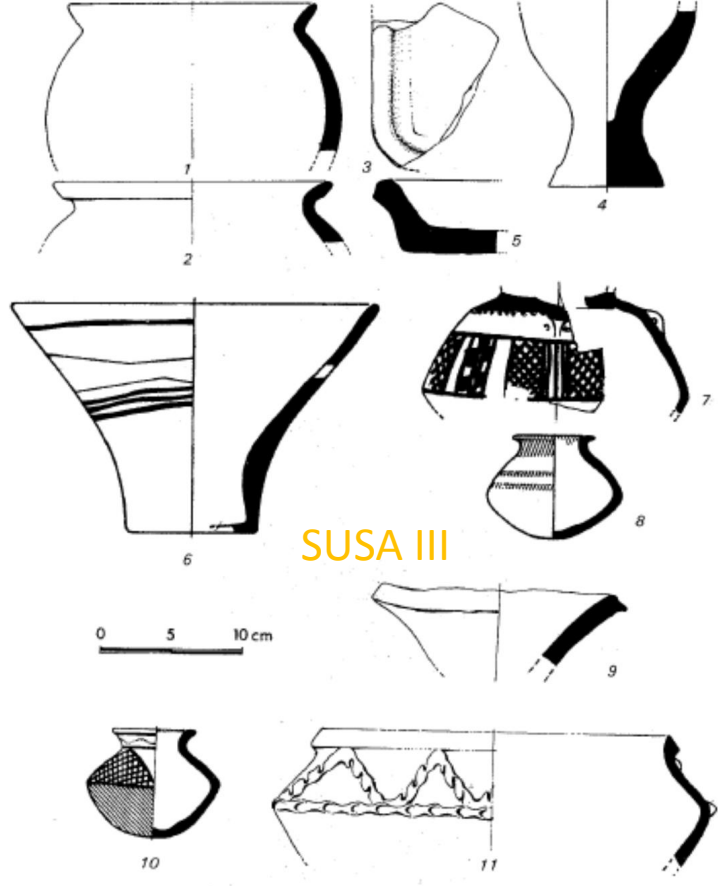


SUSA I

Data (a.C.)	Lowland
4300	Susa I
3800-3100	Susa II
3100-2900	Susa III



17. Suse. Période II. Céramique des niveaux 18 et 17 B. Voir p. 55.



43. Suse. Période III, proto-élamite. Céramique Voir p. 96.

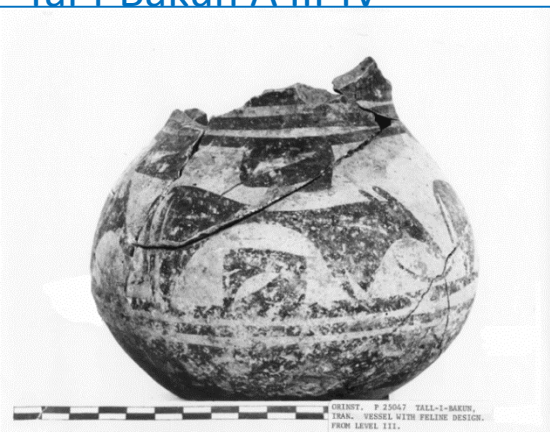


ORIENT. P 25085 TAL-I-BAKUN, IRAN. PAINTED DESIGN ON INSIDE OF BOWL. FROM LEVEL III.

Data (a.C.)	Highland
4300	Tal-i-Bakun A III-IV
3800-3100	Tal-i Bakun A (Lapui) Tal-i Malyan early Banesh
3100-2900	Tal-i Malyan late Banesh



Tal-i-Bakun A III-IV



ORIENT. P 25087 TAL-I-BAKUN, IRAN. VESSEL WITH FELINE DESIGN. FROM LEVEL III.

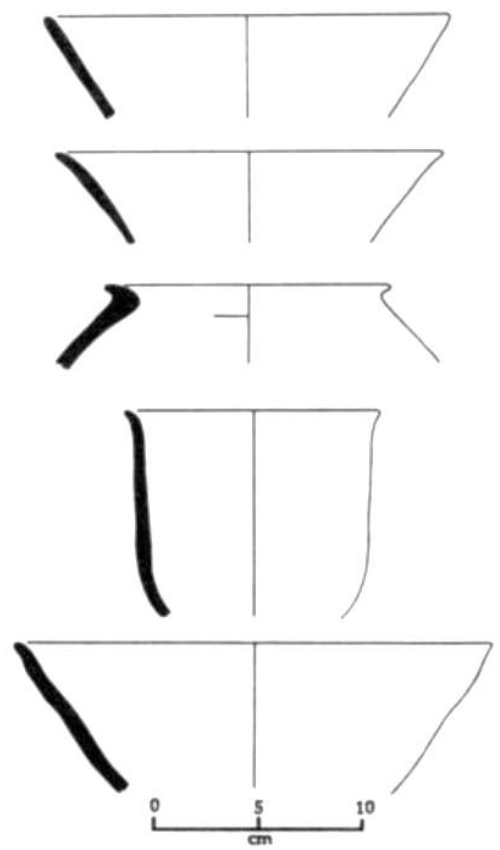
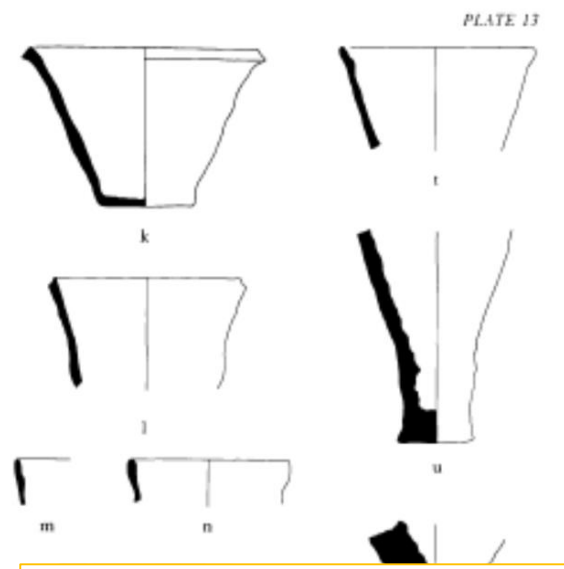
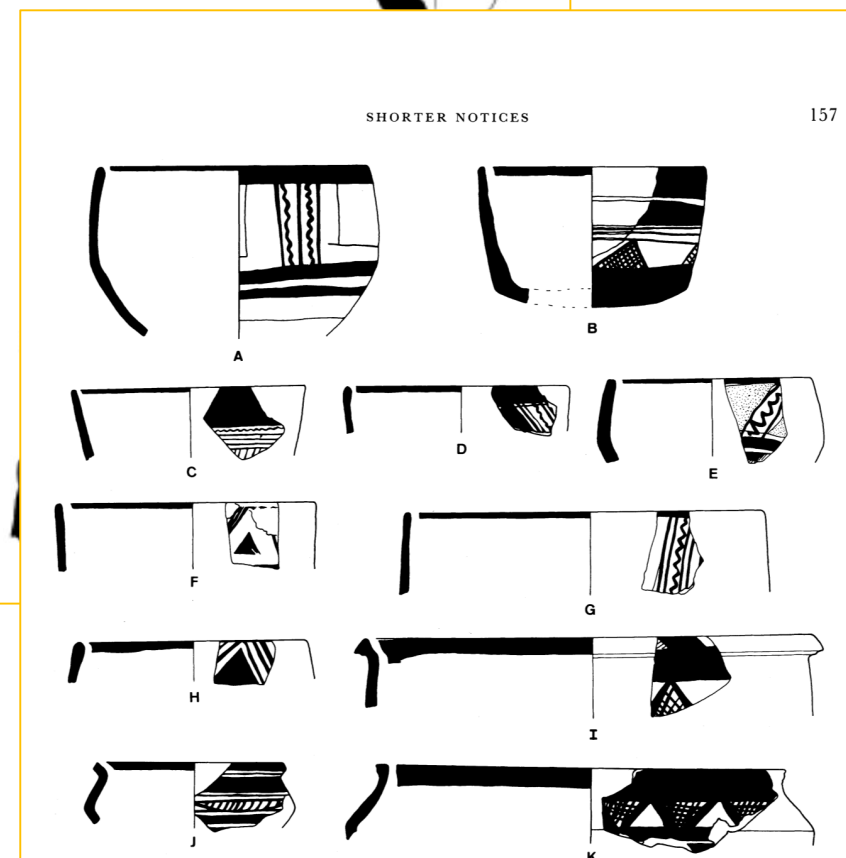
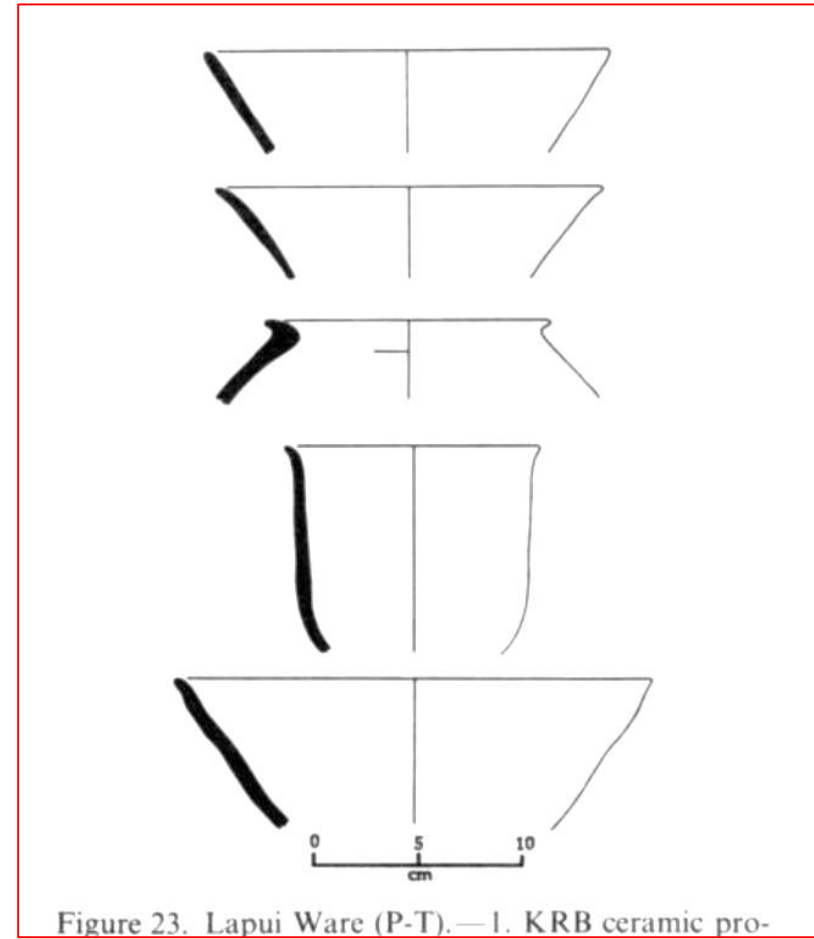
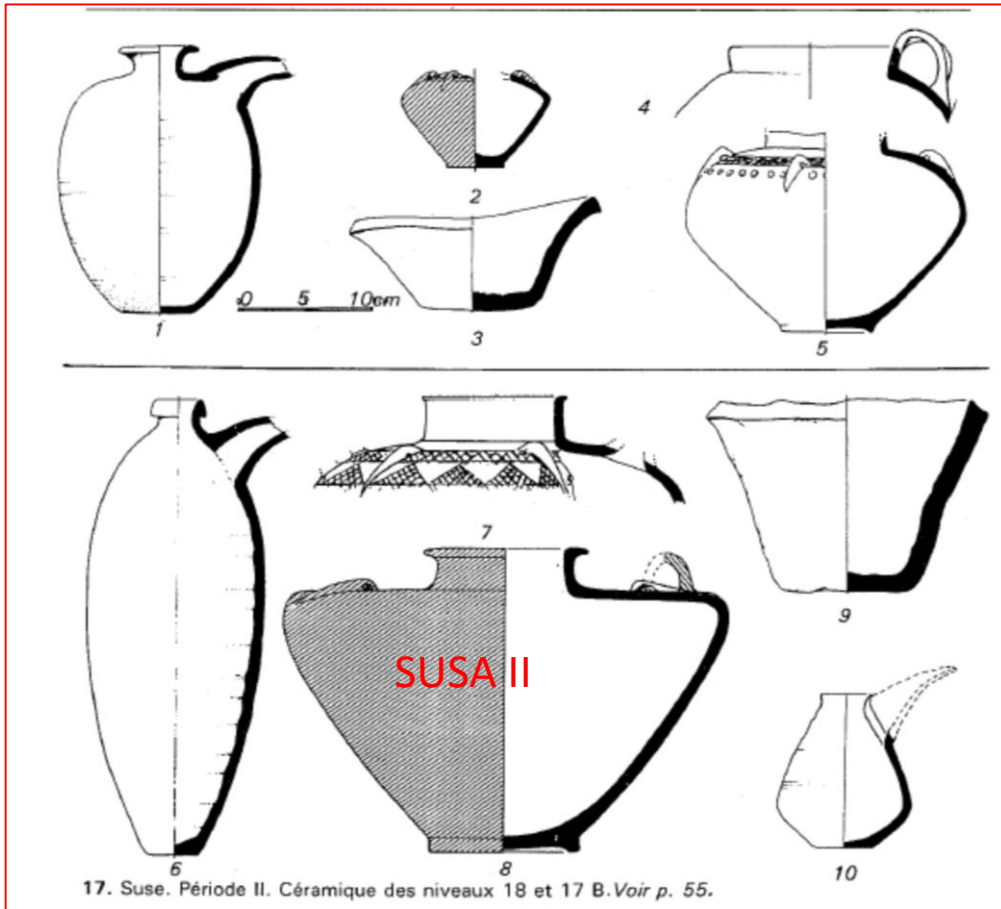


Figure 23. Lapui Ware (P-T).—I. KRB ceramic pro-

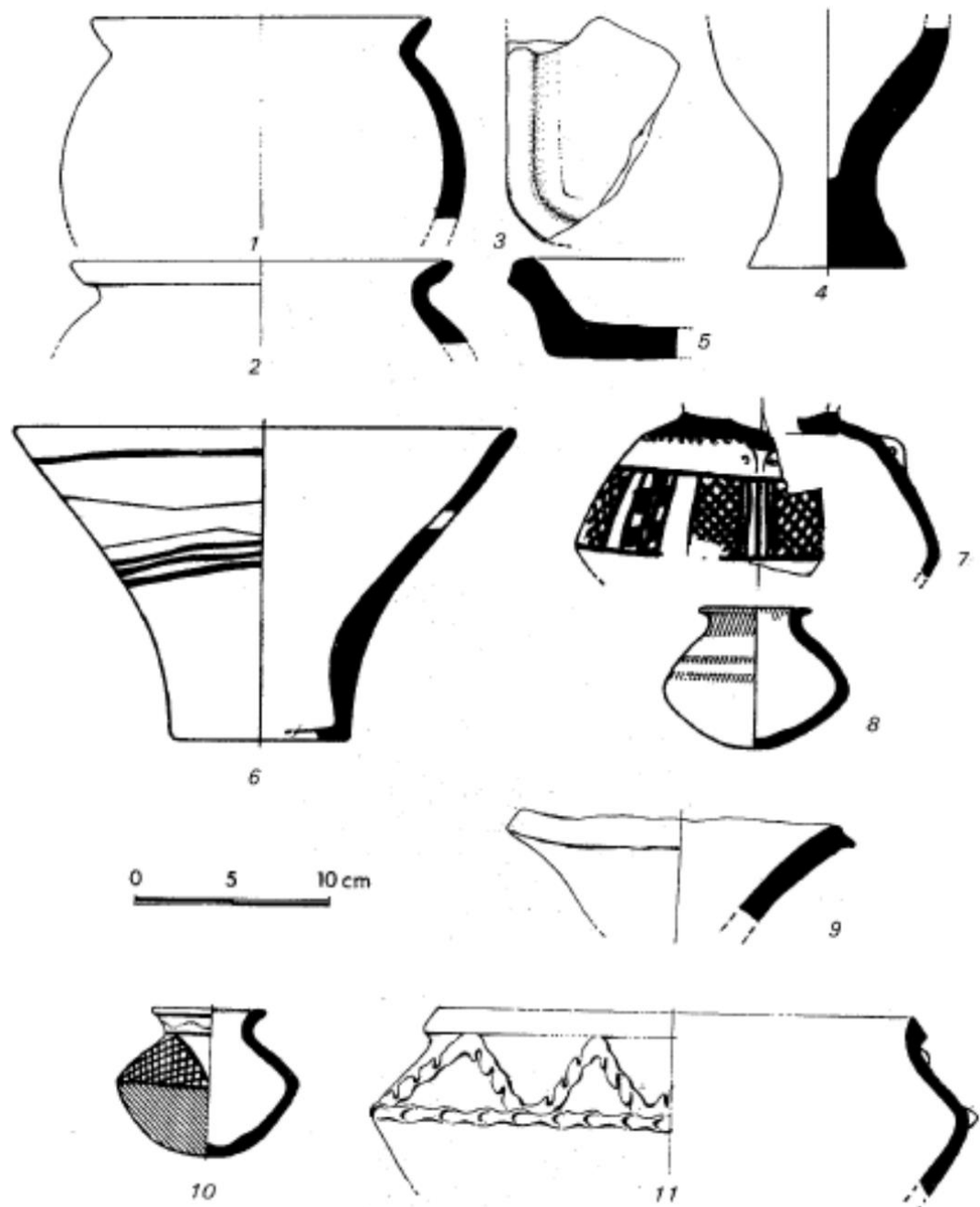


Tal-i Malyan middle/Late Banesh

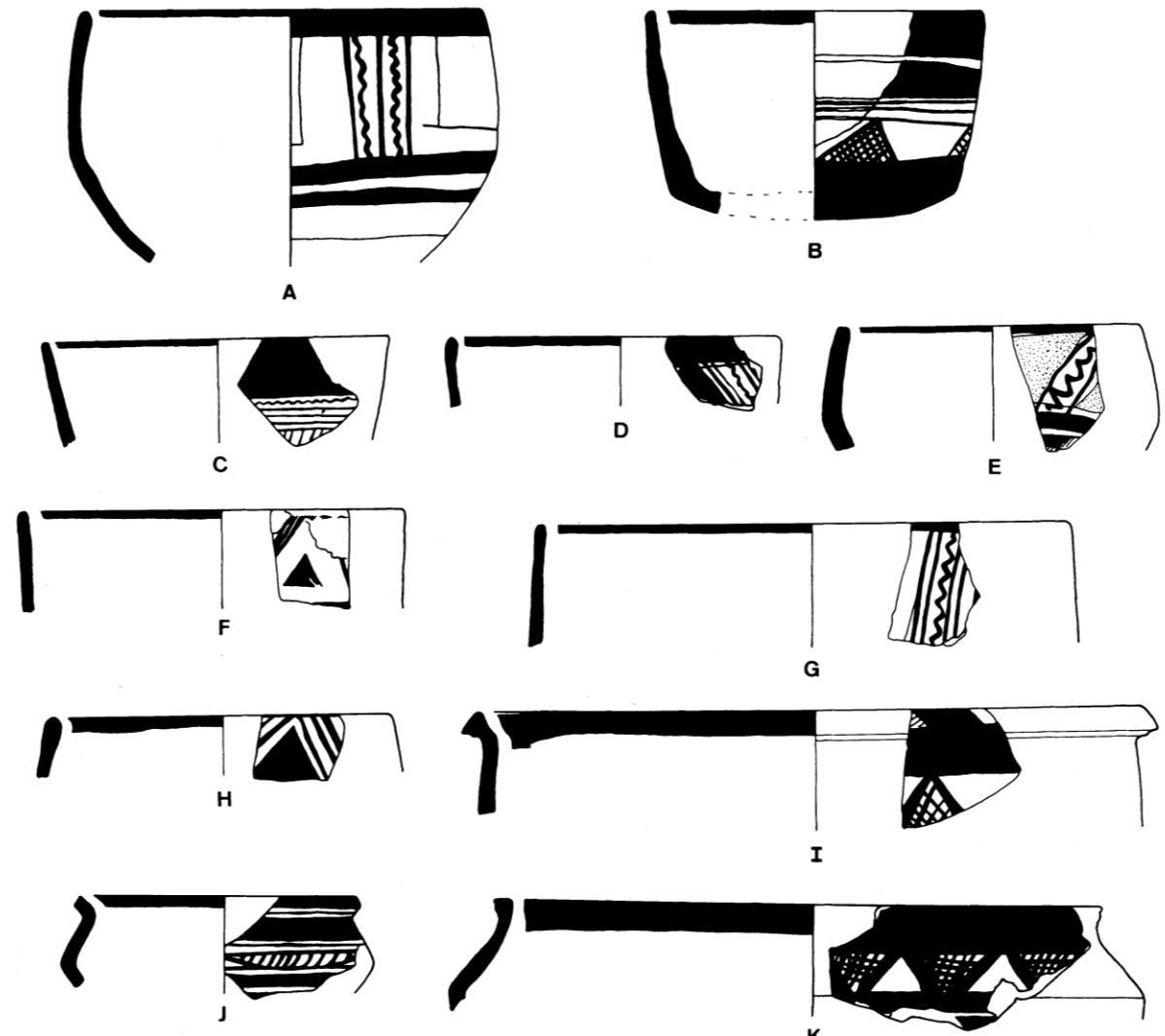




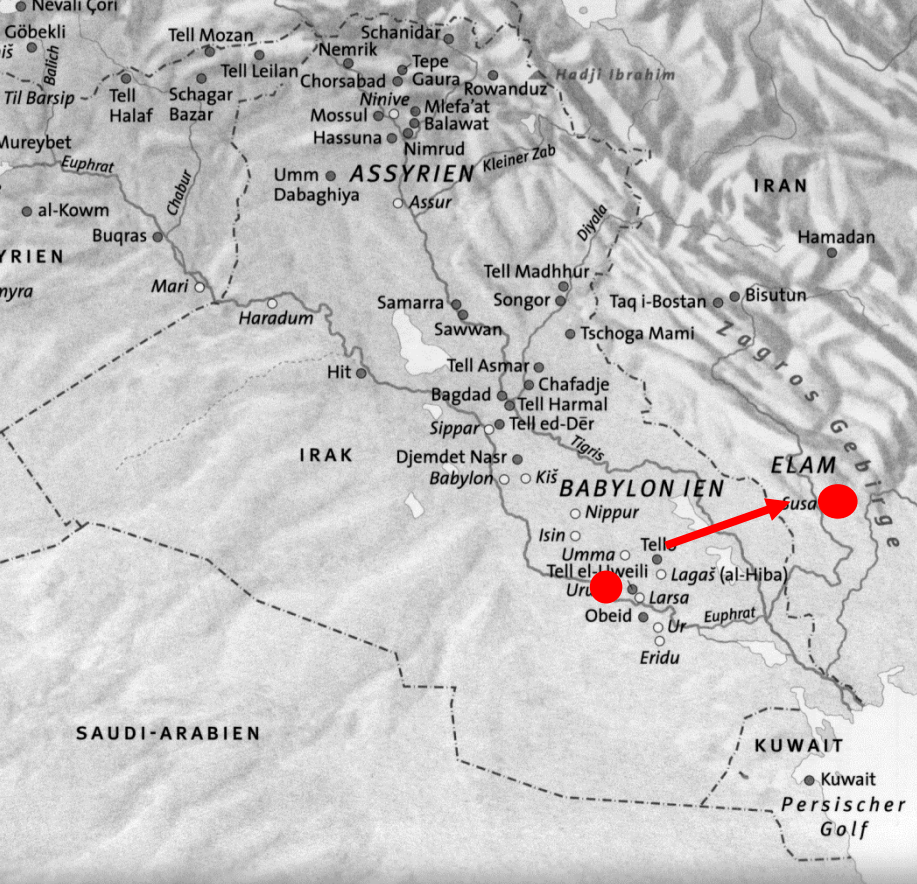
Data (a.C.)	Lowland	Highland	Mesopotamia
4300	Susa I	Tal-i-Bakun A III-IV	Ubaid III-IV
3800-3100	Susa II	Tal-i Bakun A (Lapui) Tal-i Malyan early Banesh	Uruk medio e tardo
3100-2900	Susa III	Tal-i Malyan late Banesh	Uruk Tardo/Jemed nasr



SUSA III

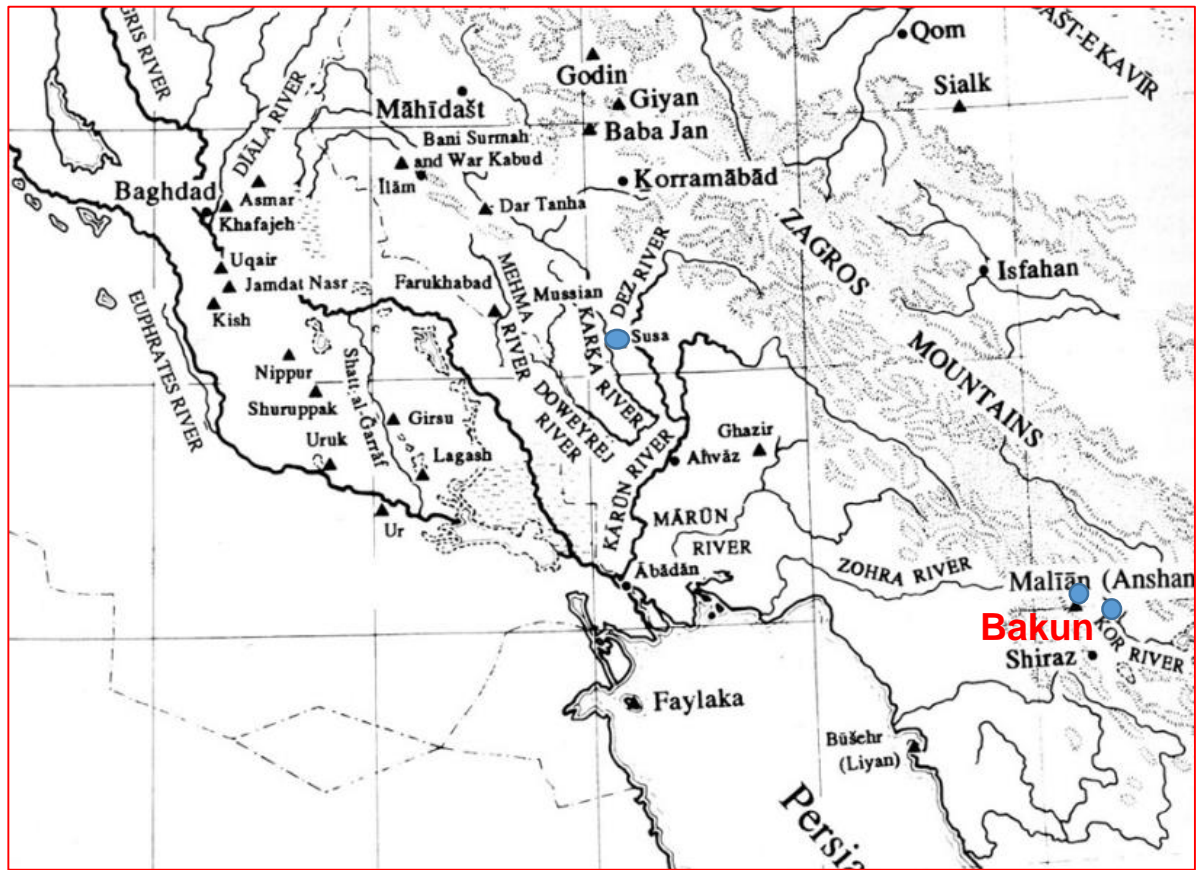


Tal-i Malyan middle/Late Banesh

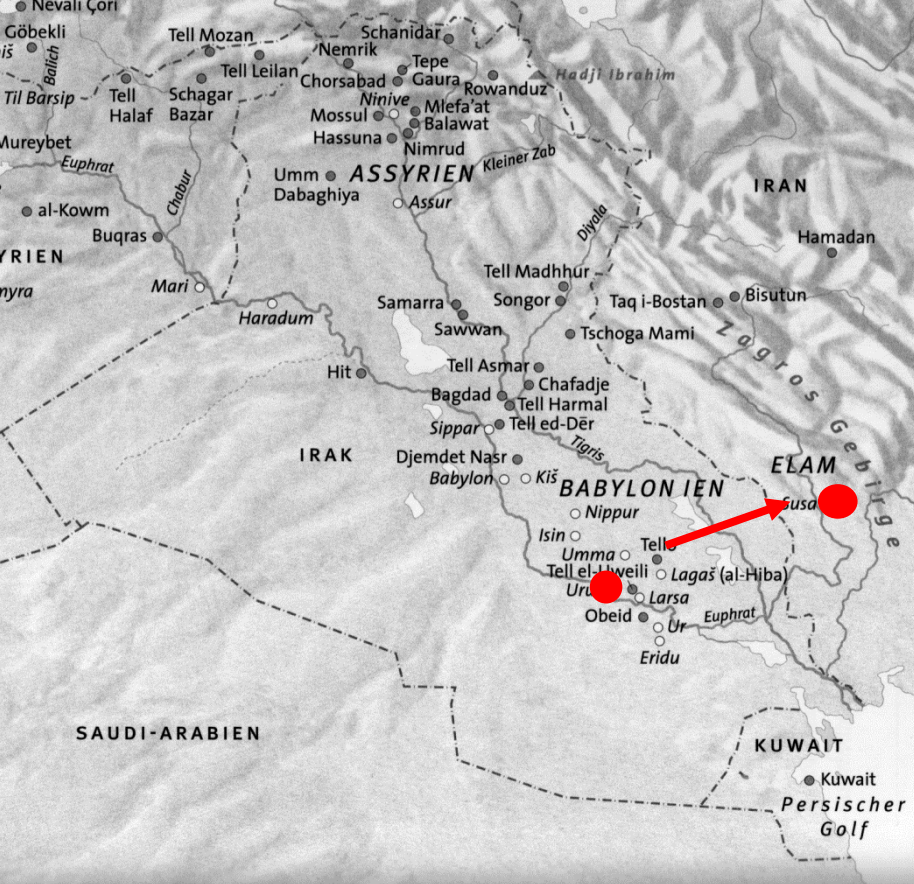


Come motivare la differenza di cultura materiale tra Kuzestan e Fars nella fase Susa II?

- Amiet: spiegazione etnica (dualismo tra abitanti del lowland e quelli dell'highland)
- Algaze: colonizzazione Uruk nel lowland per motivi commerciali
- Steinkeller: colonizzazione culturale /religiosa



1. Repertorio ceramico Uruk già dal Medio Uruk
2. Differenza dimensionale degli insediamenti (Uruk 250 ha; Susa 25 ha) = necessità amministrative nascono ad Uruk
3. L'invenzione della scrittura parte da Uruk e si diffonde
4. Dei 13 sistemi di annotazione numerica ad Uruk solo 3 sono a Susa. La forma delle tavolette è diversa tra Susa e Uruk



Come motivare la differenza di cultura materiale tra Kuzestan e Fars?

- Amiet: spiegazione etnica (dualismo tra abitanti del lowland e quelli dell'highland)
- Algaze: colonizzazione Uruk nel lowland per motivi commerciali
- Steinkeller: colonizzazione culturale / religiosa

Potts:

- Aumento dei siti nella Susiana durante il periodo Susa II
rispecchia l'infiltrazione di popolazioni in movimento nella
bassa Mesopotamia
- Le differenze nei sistemi di numerazione e nella forma delle
tavole denota che l'amministrazione non si è spostata
(amministrazione ridotta)
- Somiglianza iconografica nei sigilli denota senz'altro
contaminazione culturale

